

# Assembly Instructions

45001-01-0000



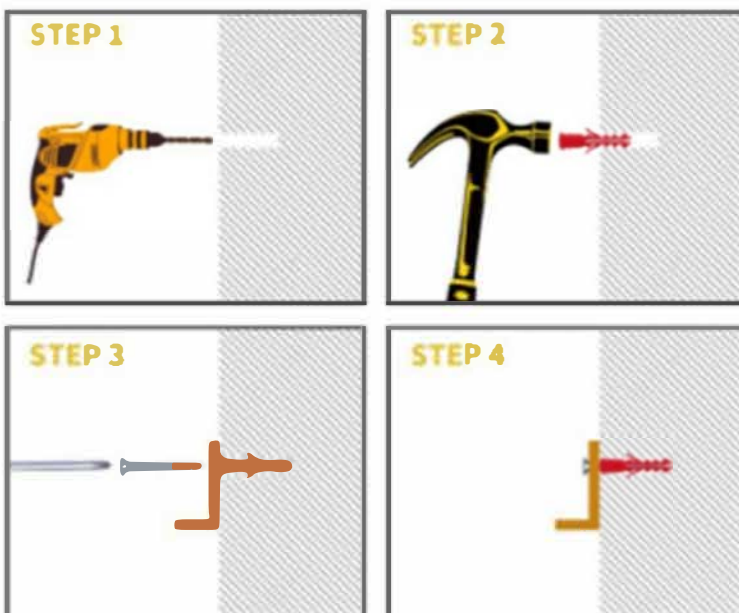
## Assembly method

1. There are connection holes on the lamp base.



2. Connect the two wires of the lamp to the live wire and neutral wire on the wall, respectively. Organize the wires and insert them into the conduit.

3. Drill holes in the wall and fix the base with expansion bolts. The installation method for expansion bolts is as follows.



The installation is complete.

Your fixture is now assembled and ready to use.