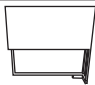
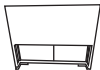


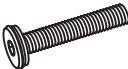
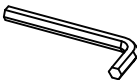
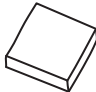




COMPONENT LIST - CORNER SOFA

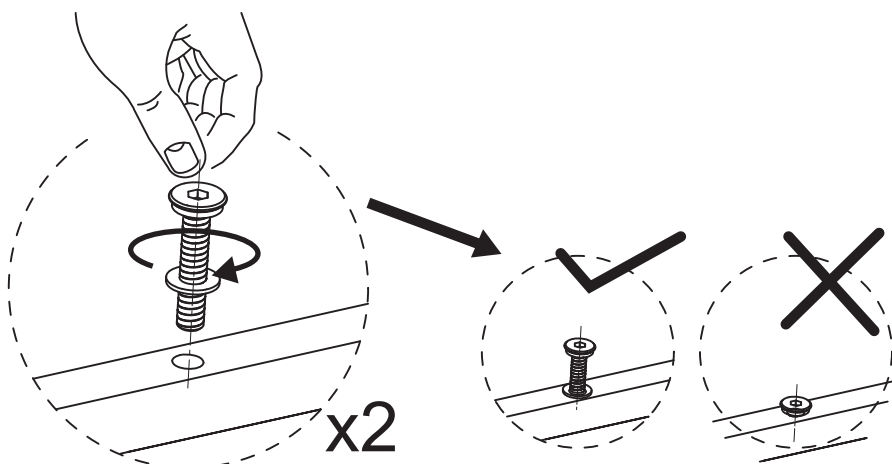
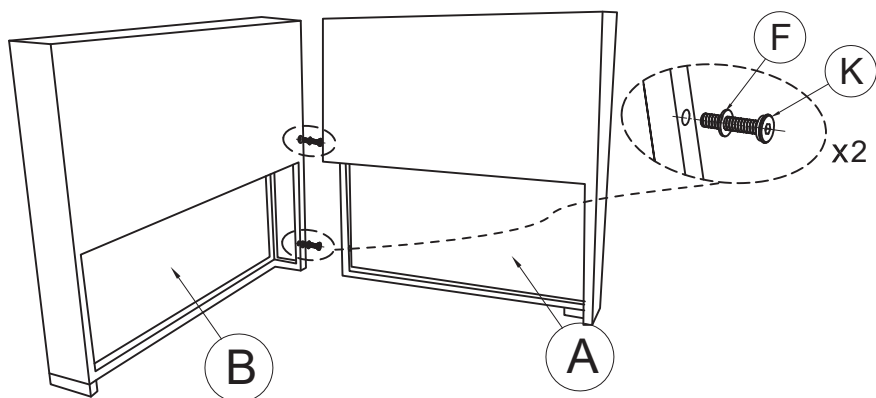
Item no.	Reference Image	Description	Qty.
A		Corner Panel	1
B		Corner Panel	1
C		Seat Base	1
F		Washer	9
K		M6X35 Head Cap Screws	9
L		Allen Key	1
S		Seat Cushion	1
T		Back Cushion	1
T1		Short Cushion	1

NOTE:

When tightening the Screws, tighten sequentially.
DO NOT tighten any Screws fully and then move on to the next one.
This may cause the frame to warp.
If there is still wobbles or screw holes cannot be aligned, loosen the bolts and execute this same process.
If the Sofa is not stable it could lead to damage to the product.

1

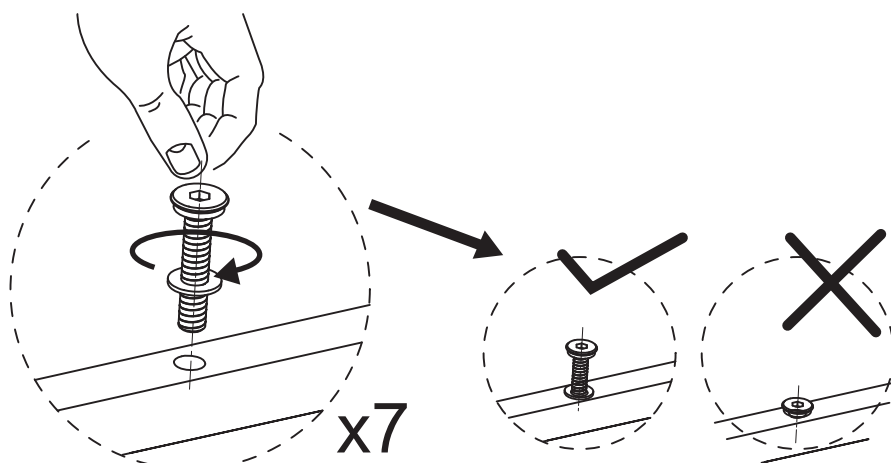
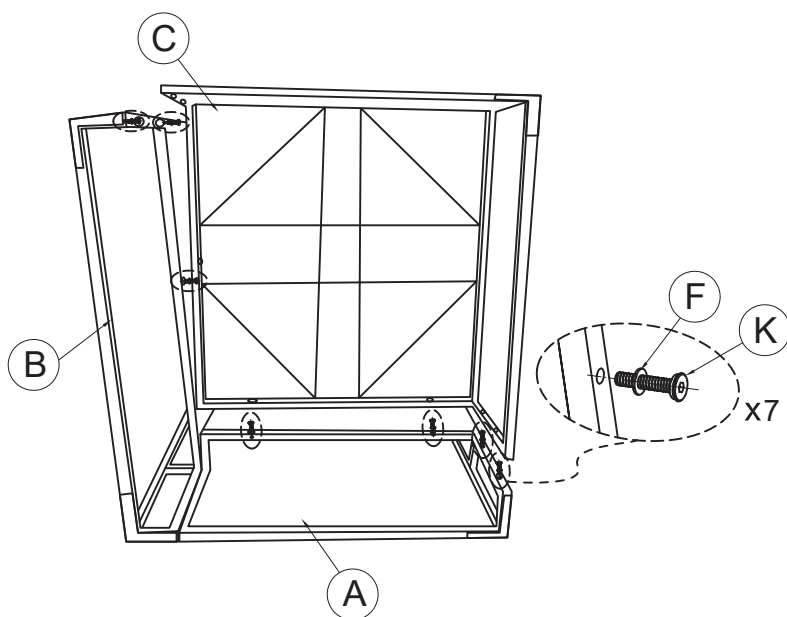
Attach the corner panel (A) to the corner panel (B) with M6*35 Head Cap Screws (K) and Washers (F). Do this in 2 places.



NOTE:DO NOT TIGHTEN THE SCREWS COMPLETELY.

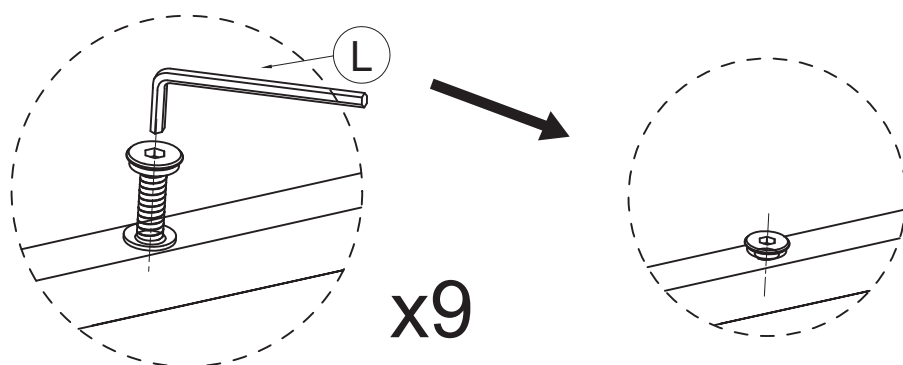
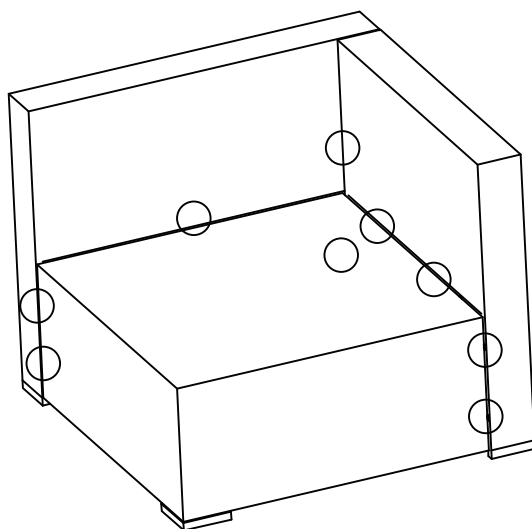
2

Attach the seat base (C) to the corner panel (A) and corner panel (B) with M6*35 Head Cap Screws (K) and Washers (F). Do this in 7 places.



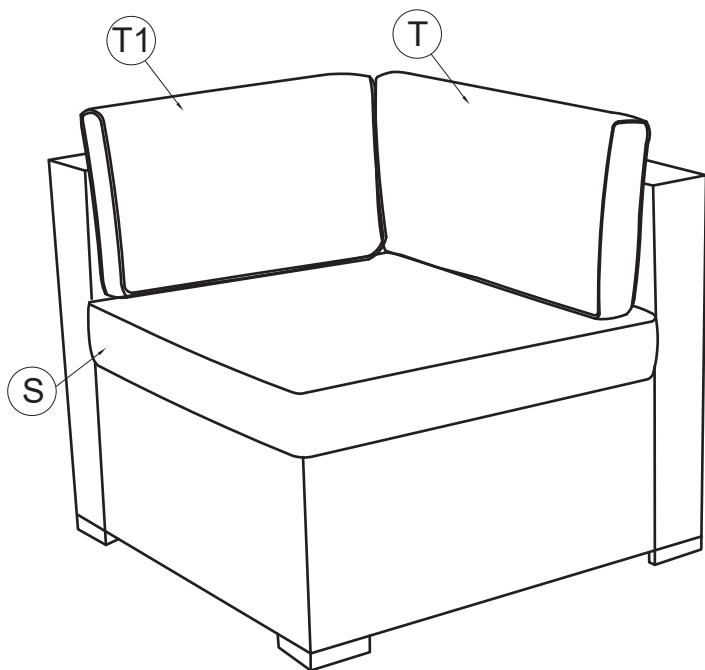
NOTE:DO NOT TIGHTEN THE SCREWS COMPLETELY.

- 3** Tighten all 9 Screws into place with Allen Key (L).

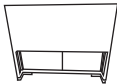




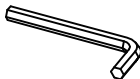
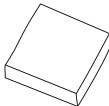
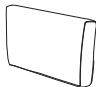


NOTE:IF ANY SCREW HOLES CANNOT BE ALIGNED,
LOOSEN ALL THE SCREWS AND GO BACK STEP
1 AND RESTART ASSEMBLY.

- 4** Place the Sofa on a level surface. Place the Seat Cushion (S) and Back Cushion (T) and Short Cushion (T1) on the Sofa. Your Sofa is ready for use.



COMPONENT LIST - ARMLESS SOFA

Item no.	Reference Image	Description	Qty.
D		Seat Back	1
E		Seat Base	1
G		Side Panel	1
F		Washer	8
K		M6X35 Head Cap Screws	8
L		Allen Key	1
S		Seat Cushion	1
T		Back Cushion	1

NOTE:

When tightening the Screws, tighten sequentially.

DO NOT tighten any Screws fully and then move on to the next one.

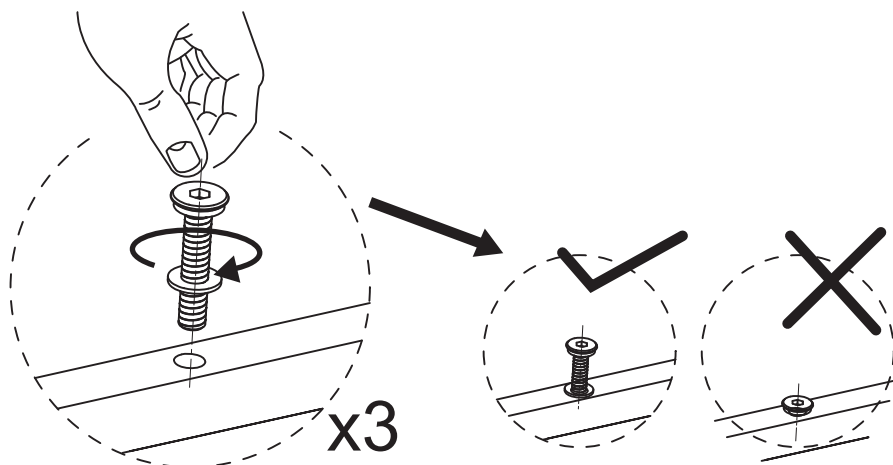
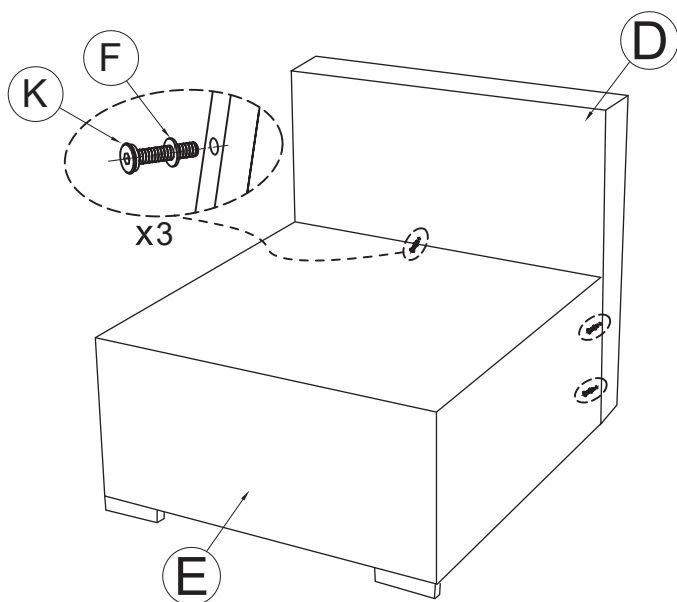
This may cause the frame to warp.

If there is still wobbles or screw holes cannot be aligned, loosen the bolts and execute this same process.

If the Sofa is not stable it could lead to damage to the product.

1

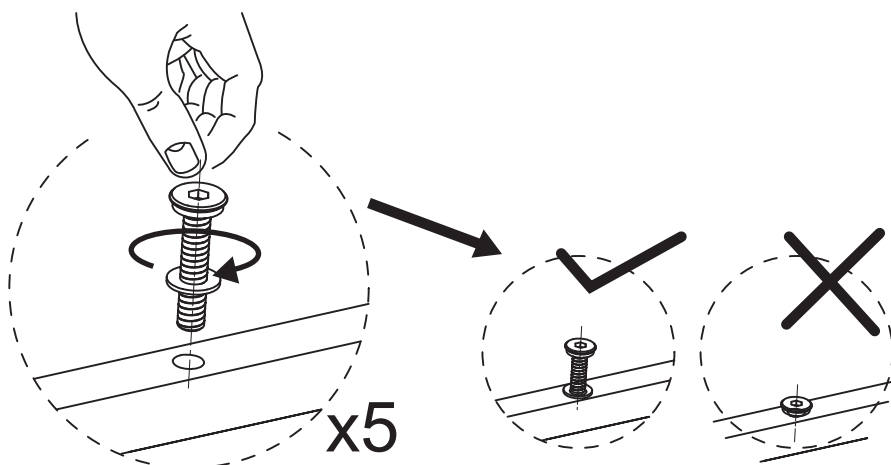
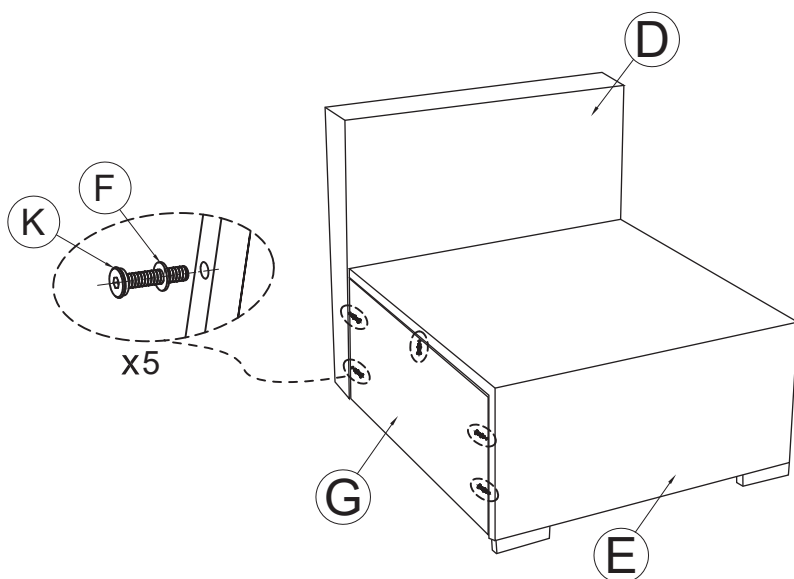
Attach the seat back (D) to the seat base (E) with M6*35 Head Cap Screws (K) and Washers (F). Do this in 3 places.



NOTE:DO NOT TIGHTEN THE SCREWS COMPLETELY.

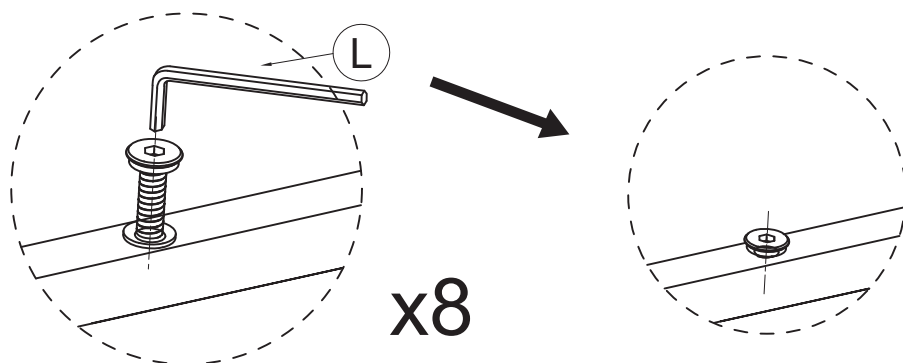
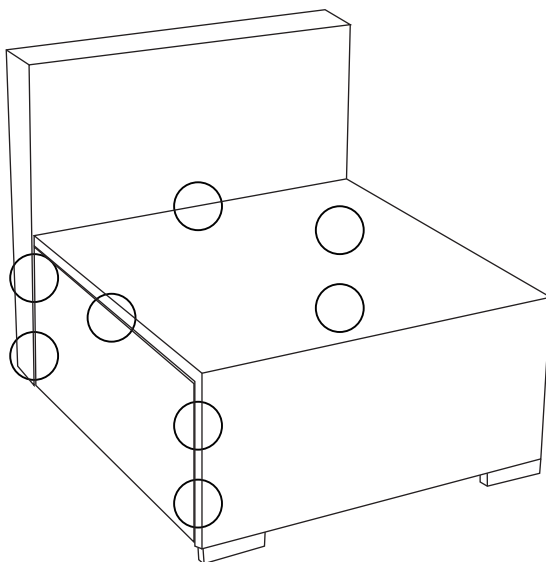
2

Attach the side panel (G) to the seat back (D) and seat base (E) with M6*35 Head Cap Screws (K) and Washers (F). Do this in 5 places.



NOTE:DO NOT TIGHTEN THE SCREWS COMPLETELY.

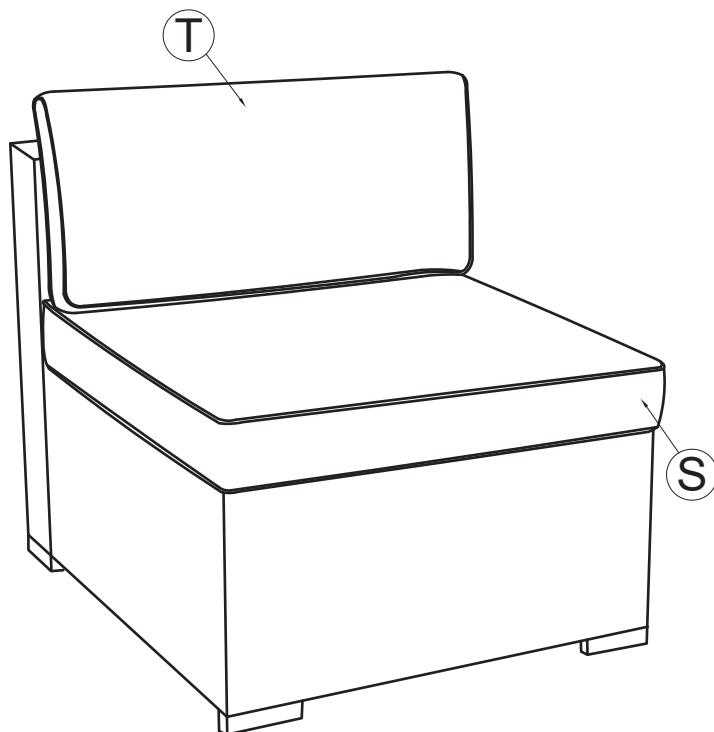
- 3** Tighten all 8 Screws into place with Allen Key (L).



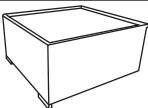
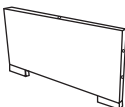
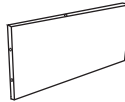

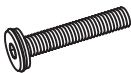
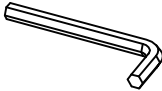
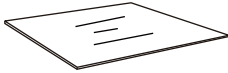
NOTE:IF ANY SCREW HOLES CANNOT BE ALIGNED,
LOOSEN ALL THE SCREWS AND GO BACK STEP
1 AND RESTART ASSEMBLY.

4

Place the Sofa on a level surface. Place the Seat Cushion (S) and Back Cushion (T) on the Sofa. Your Sofa is ready for use.



COMPONENT LIST - TABLE

Item no.	Reference Image	Description	Qty.
J		Top Side	1
O		Side Panel	1
P		Side Panel	1
F		Washer	8
K		M6X35 Head Cap Screws	8
L		Allen Key	1
N		Glass	1

NOTE:

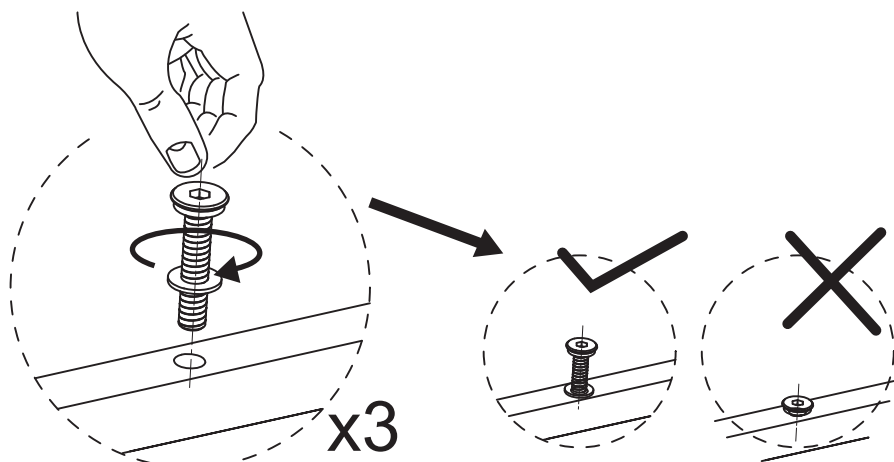
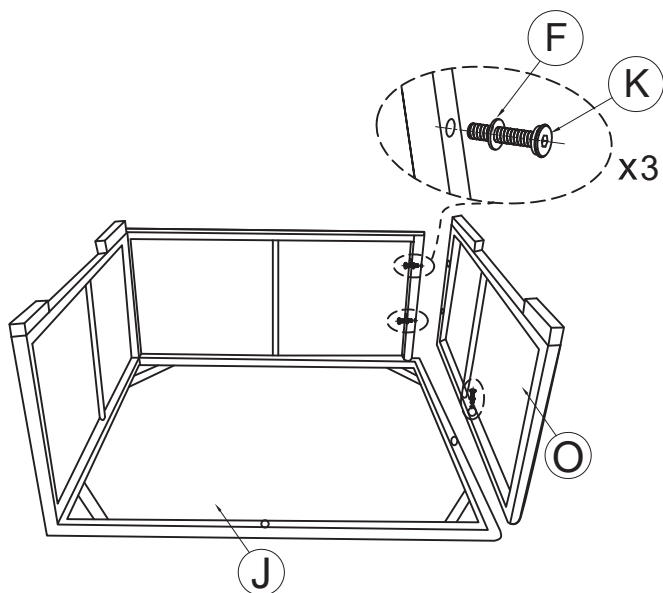
When tightening the Screws, tighten sequentially.

DO NOT tighten any Screws fully and then move on to the next one. This may cause the frame to warp.

If there is still wobbles or screw holes cannot be aligned, loosen the bolts and execute this same process.

If the Table is not stable it could lead to damage to the product.

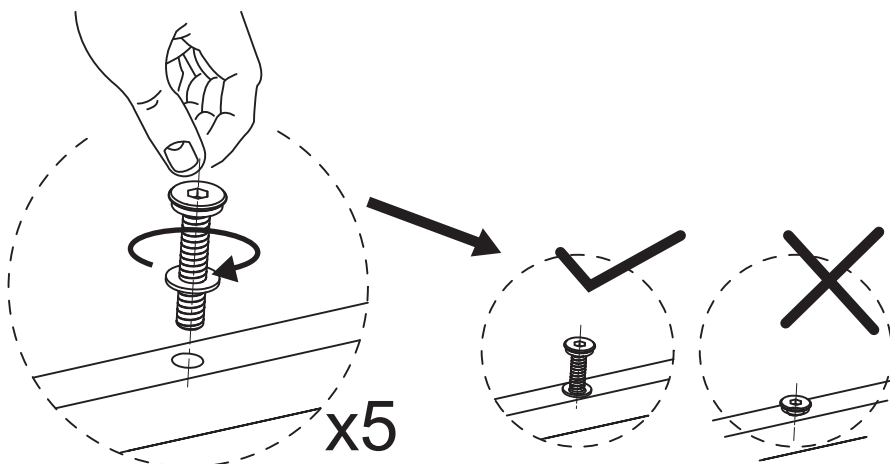
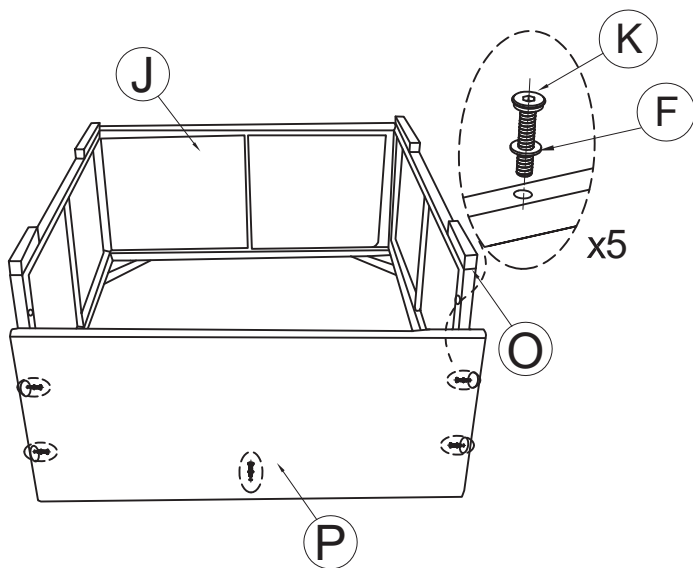
- 1** Attach the side panel (O) to the top side (J) with M6*35 Head Cap Screws (K) and Washers (F). Do this in 3 places.



NOTE:DO NOT TIGHTEN THE SCREWS COMPLETELY.

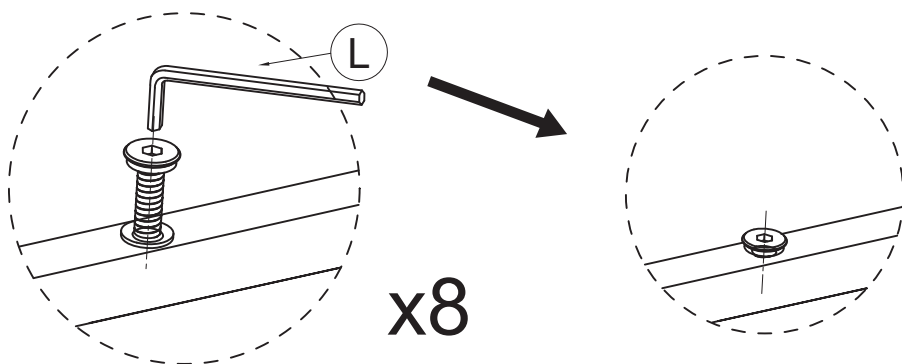
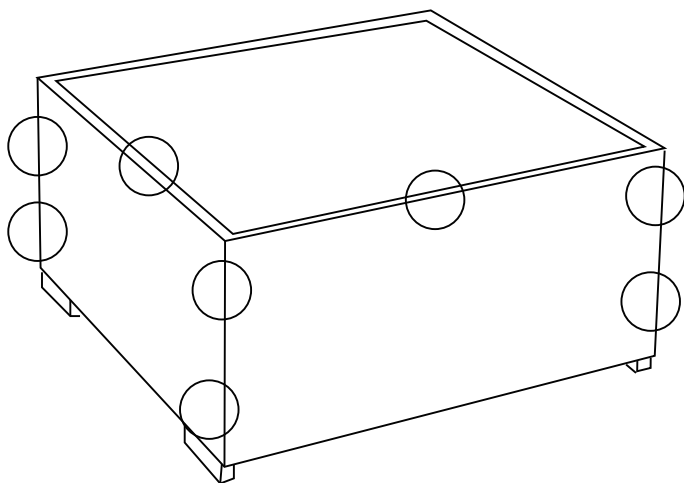
2

Attach the side panel (P) to the side panel (O) and top side (J) with M6*35 Head Cap Screws (K) and Washers (F). Do this in 5 places.



NOTE:DO NOT TIGHTEN THE SCREWS COMPLETELY.

3 Tighten all 8 Screws into place with Allen Key (L).



NOTE:IF ANY SCREW HOLES CANNOT BE ALIGNED,
LOOSEN ALL THE SCREWS AND GO BACK STEP
1 AND RESTART ASSEMBLY.

- 4 Place the Table on a level surface. Put the Table Glass (N) on the Table. Your table is ready for use.

