

LIST OF COMPONENT

1. Head board x 1 pc

2. Foot board x 1 pc

3. Siderail x 2 pcs

4. Center rail x 1 pc
(3 screws x 2)

5. Half moon, bolt & nut x 4 sets

6. Center support x 1 pc
(4 screws)

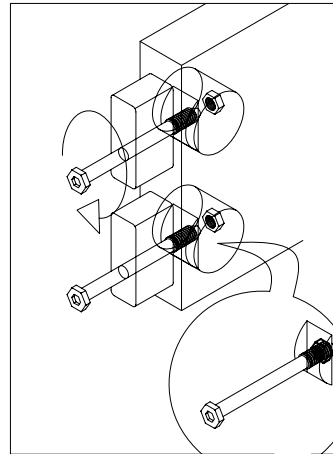
7. Corner bracket x 2 pcs
(8 screws x 2)

8. L-Support bracket x 8 pcs
(5 screws x 8)

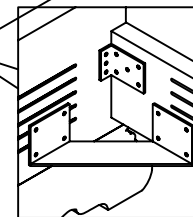
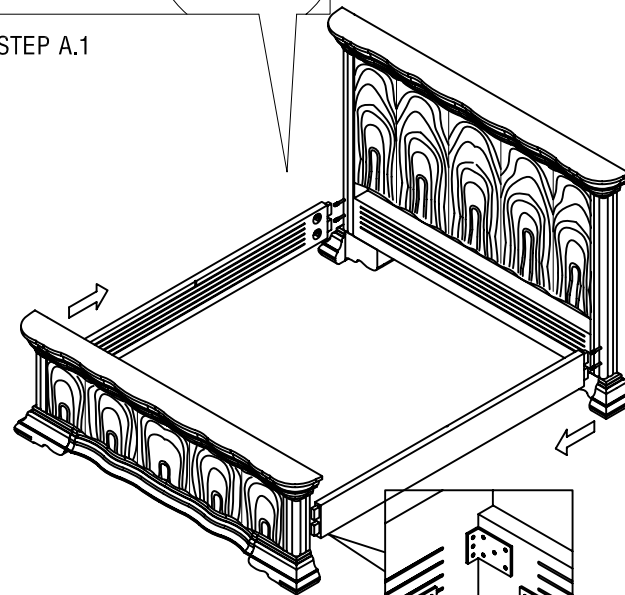
9. Iron bracket x 2 pcs
(8 screws x 2)

A.

Step A.1 : Tighten bolt with halfmoon and nut to connect side rails to headboard.



STEP A.1



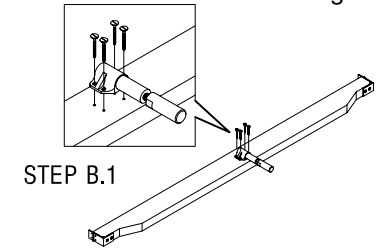
STEP A.2

Step A.2 : Screw corner bracket to connect footboard, siderails and headboard together. Continue with 2 iron brackets.

Ensure all components are fully tightened together.

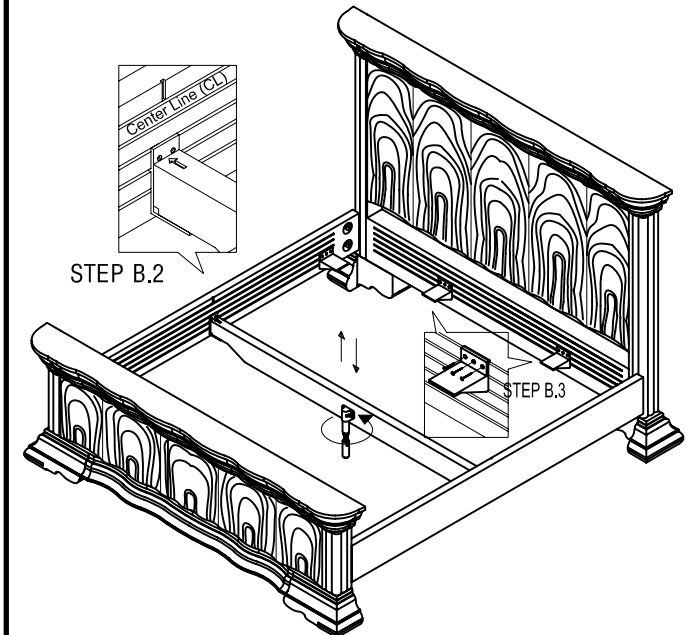
B.

Step B.1 : Screw center support and center rail together.



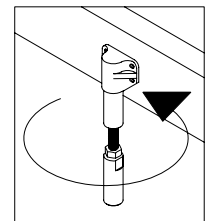
STEP B.1

Step B.2 : Insert center rail to desired level at the Center Line (CL) and insert screws.



STEP B.2

Step B.3 : Assemble 8 L-Support brackets to bed. It must be the same level as center L-Support position.



STEP B.4

Step B.4 : Adjust center support till the bed stand is stable on the floor.