

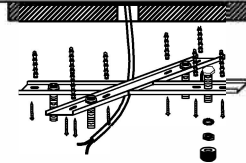
①

### Caution



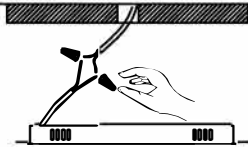
1) First, make sure to disconnect the power by turning off the switch and the circuit breaker.

②



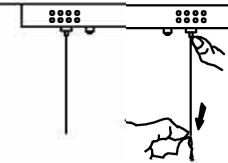
2) Install the mounting plate. Make sure to securely screw the mounting plate onto the electrical box or a beam if necessary.

③



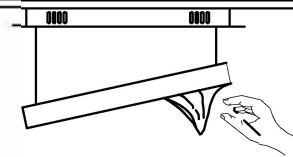
4) Connect the hot wire (black or red) from the electric box with the "L" wire from the chandelier, and the white wire from the electric box with the non-L wire from the light. Screw the ceiling canopy into the mounting plate.

④



5) Adjust the height of each tier of the frame from the top to the bottom.

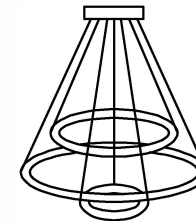
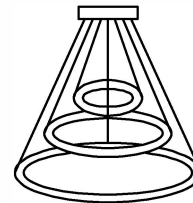
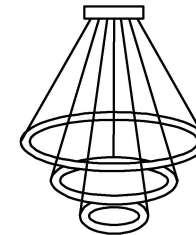
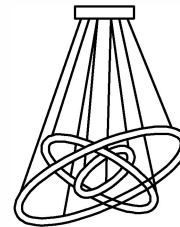
⑥



6) Remove the protective film on the ceiling mount and the stainless frames.

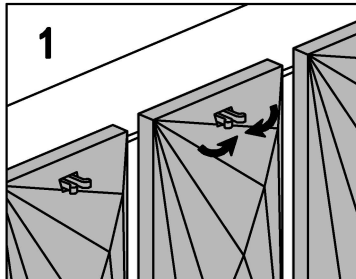
Composition material: Steel (201)+Crystal

Weight: 15 lb

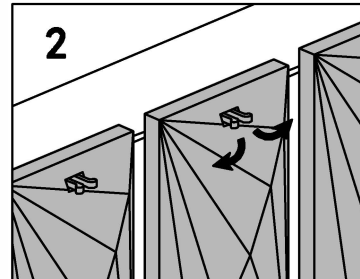


### Steps to hang crystals.

1. Push the pins through the crystal holes.



2. Bend the pins to the sides to fasten the crystal.



Dear Customer

Thank you for your business!

We want you to be completely satisfied with your Purchase.

Product review means the world to us.

Thank you