

Assembly Instructions

Package Contents

Part	Description	Quantity
A	Mounting Bracket	1 pc.
B	Fixture Body	1 pc.
C	Metal Rod	1 pc.
D	Lamp Shade	1 pc.
E	Finial	1 pc.



STEP 1

Remove the mounting bracket from the ceiling canopy.
Mark the drilling position on ceiling with the help of the mounting bracket.
Drill holes on the marks and stick the expansion anchors into the holes.
Mount the mounting bracket on the wall.



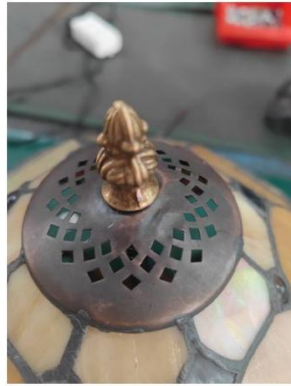
STEP 2

Hold the fixture close to ceiling.
Connect one supply wire with one of the two wire strands from fixture.
Connect the other supply wire with the other wire strand from fixture.



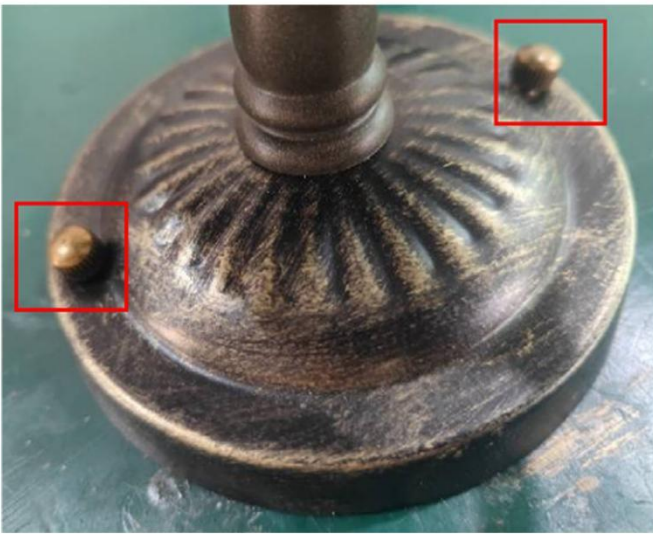
STEP 3

Install lampshade.



STEP 4

Install the ceiling canopy to the mounting bracket on the wall and fix it with screws.



Your fixture is now assembled and ready to use.