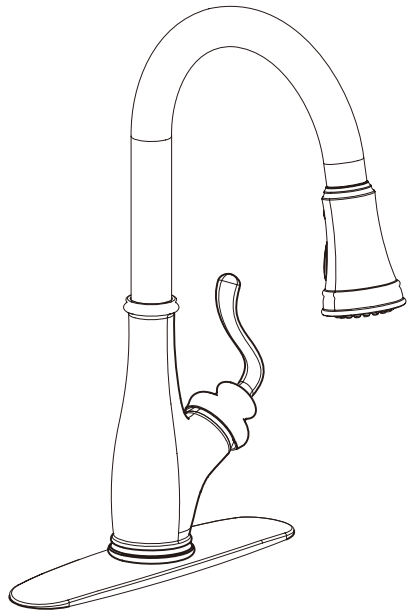


INSTALLATION

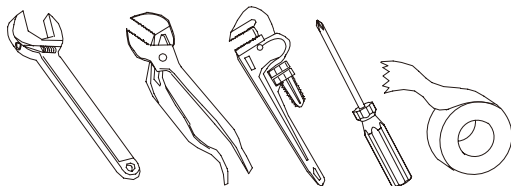
Single Handle Pull Down
Kitchen Faucet



F80027

Tools Needed:

- Adjustable Wrench
- Pliers
- Pipe Wrench
- Screwdriver
- Teflon Tape
- 1 × 3/8" Basin Wrench or
1 × 11/32" Shower Valve Socket Wrench

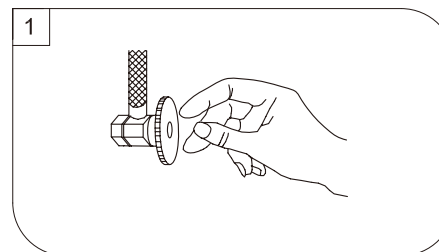


Maintenance:

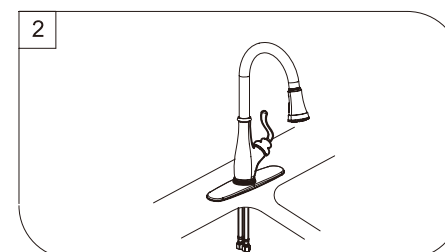
Your new kitchen faucet is designed for years of trouble-free performance.

Keep it looking new by cleaning it periodically with a soft cloth. Avoid abrasive cleaners, steel wool and harsh chemicals as these will dull the finish and void your warranty.

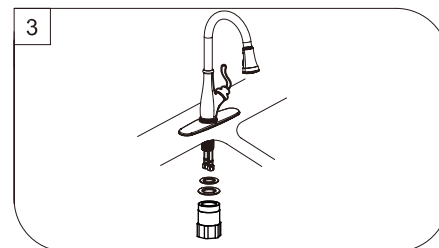
PREPARATION & ASSEMBLY



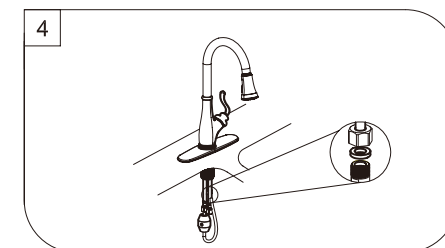
Shut off water supplies. Remove old faucet. Clean sink surface in preparation for new faucet.



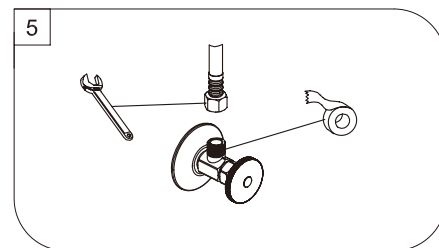
Place optional escutcheon on bottom of new faucet before position faucet through mounting hole.



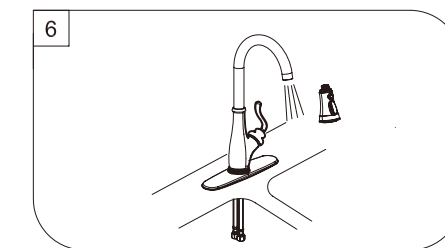
From under the sink, install the two rubber washers, and mounting nut onto the shank. Tighten the mounting nut.



Install counter weight onto pull out hose. Connect the pull out hose to water inlet tube. Be sure to install rubber washer. Do not overtight the connection.



Apply pipe tape onto threads of water supplies. Use wrench when tightening the hose connection, do not overtighten.



NOTED: After installation is completed. Turn on water supply and allow both hot and cold water to run for at least one minute each. While water is running, check for leaks. Reinstall Spray head. Your new faucet is now ready to use.