

### Warning:

This is not a toy, To avoid danger , keep this plastic bag away from babies and children. Keep the extra accessories.

### Notice:

Ⓢ Please check all components in package. Please contact us if any parts missing. Please read the instruction steps carefully before installation.

Ⓢ Although the finish is very durable, it can be damaged by some cleaners. Avoid using acidic detergent to touch the surface. In daily cleaning faucet surface, wipe gently with a damp soft cloth and dry it with a soft towel.

Ⓢ If you have any problem with this purchase, please contact with us any time. We will try our best to solve your problem.

(Email: [dlem@pobosales.com](mailto:dlem@pobosales.com) )



**Ultimate  
UNICORN**

**Pull Down Bathroom Faucet**

**Installation**

**♥♥ Instructions**

READ ALL INSTRUCTIONS STEPS BEFORE INSTALLATION.  
 FLUSH ANGLE VALVE TO RELEASE ANY DEBRIS BEFORE INSTALLATION.



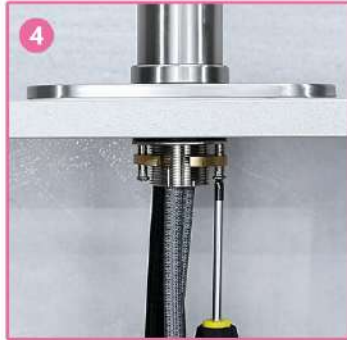
1. Put the cover on the table.



2. Insert all the hoses and the faucet into the sink hole.



3. Put the rubber gasket, steel washer and the nut in sequence upward.



4. Use a phillips screwdriver to tighten the screws.



5. Install the other side of the inlet hose to the angle valve. (Just tighten it gently, excessive force will damage the hose)



6. Clasp the weight to the "weight Here" label. The installation is complete.

### Pop-up Drain with Overflow Installation Guide

**NOTES:**

- Fits for sink WITH overflow hole.
- Clean the sink hole, make sure to remove debris.
- Please avoid using plumber's putty. The seal on top is leak-free. Plumber's putty might cause damage.
- Silicone and plumbing tape can be use for sealing requirement.

1. Unscrew components B&C&D.
2. Insert the drain body A into the hole in the sink.
3. Screw components B&C&D back on as shown.
4. Connect the rear end of the drain to the Drain Pipe.
5. Push to activate.