



**Dimensions:**

23.75" W x 15.8" D x 22" – 30.5" H

**Customer Service Information**

**Seville Classics, Inc.**

Telephone: (800) 323-5565

Fax: (310) 533-3899

Hours: 8:30 AM – 4:30 PM (PST)

Email: [Support@SevilleClassics.com](mailto:Support@SevilleClassics.com)

Online Store: [www.SevilleClassics.com](http://www.SevilleClassics.com)



## Mobile Laptop Desk Cart

**Model #: OFF65987B**

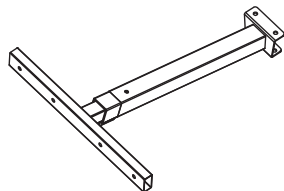
**Thank you for choosing Seville Classics!**

We hope you enjoy your new mobile laptop desk cart. Please read through these assembly instructions and frequently asked questions to ensure proper assembly.

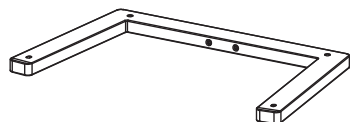
The contact information for our live customer support team based in California is on the last page.

Please review the below parts list to ensure you received all the necessary parts.  
 If you are missing any parts or have trouble with assembly,  
 please contact our live customer support team at (800) 323-5565 or  
[Support@sevilleclassics.com](mailto:Support@sevilleclassics.com), which can assist you in both English and  
 Spanish.

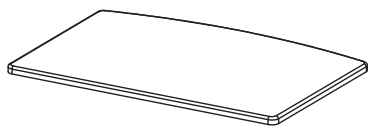
## Parts List



A. T-Bar (1 pc)



B. Base (1 pc)



C. Top (1 pc)



D. End Cap (2 pcs)



E. Locking Caster (2 pcs)



F. Caster (2 pcs)



G. Screws M6 x 50 mm (4 pcs)



H. Screws M6 x 60 mm (4 pcs)



I. Washers (4 pcs)



J. Wrench (1 pc)



K. Hex Key (1 pc)

### Attention:

Do not fully tighten all the screws until all of them are in the right positions.

## FAQs

### Q: Can I use it without the wheels?

A: Sure! Leave the wheels off to use directly on the floor. This works well on carpeted surfaces and near furniture with low floor clearance. Be careful! The base is steel and can scratch floors without wheels. We recommend adding pads for use on hard flooring.

### Q: Can I use as a sit-stand workstation?

A: No, the table only rises to 30.5 inches – about the average height of a normal desk. Seville Classics offers a sit-stand desk cart (model# OFF64802B and OFF64803B) that rises up to 42.2 inches.

Please visit [sevilleclassics.com](http://sevilleclassics.com) to shop our wide range of products.

**Maximum weight capacity:** 15 lbs.

**Weight:** 11 lbs.

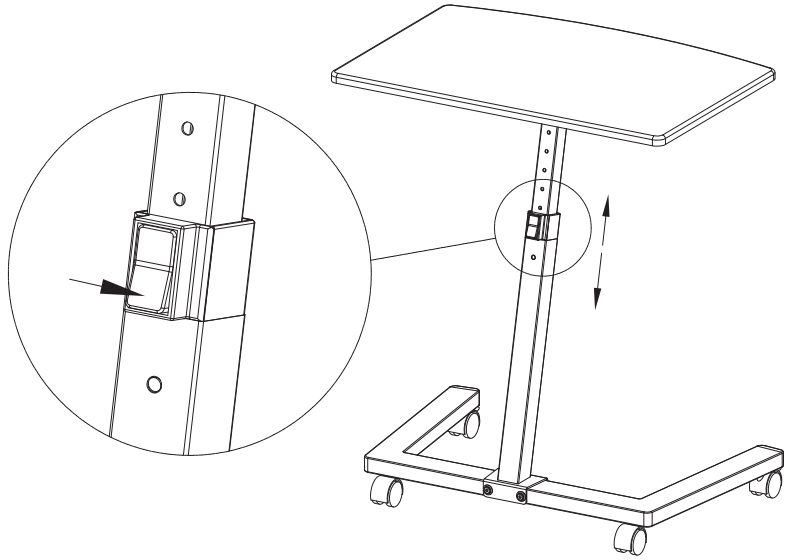


### Note:

Please be considerate of the environment and recycle the brown box the item was delivered in along with all applicable packaging materials. Thank you.

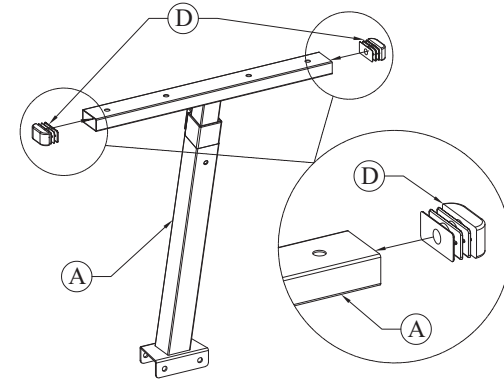
## STEP 6.

To adjust the height, lift the top to raise it; press and hold the button to lower the top.



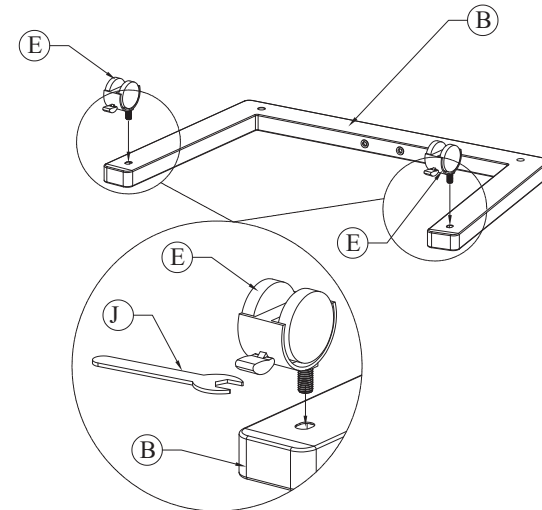
## STEP 1.

Press END CAPS (D) into both ends of T-BAR (A). Press T-bar fully into neck.



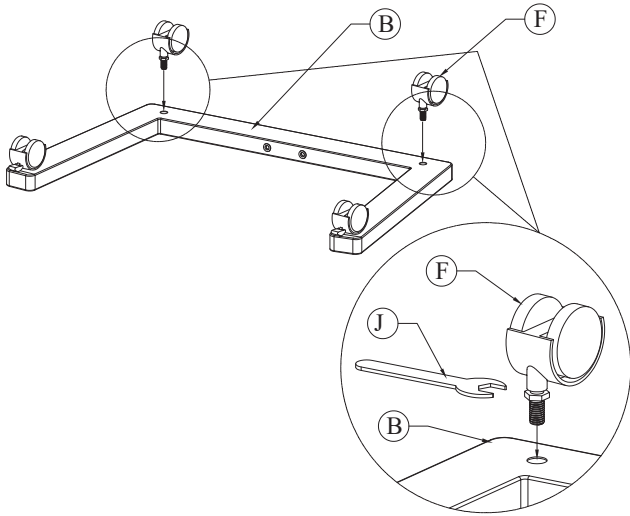
## STEP 2.

Install LOCKING CASTERS (E) to the open side and screw into the BASE (B). Tighten with WRENCH (J) until snug.



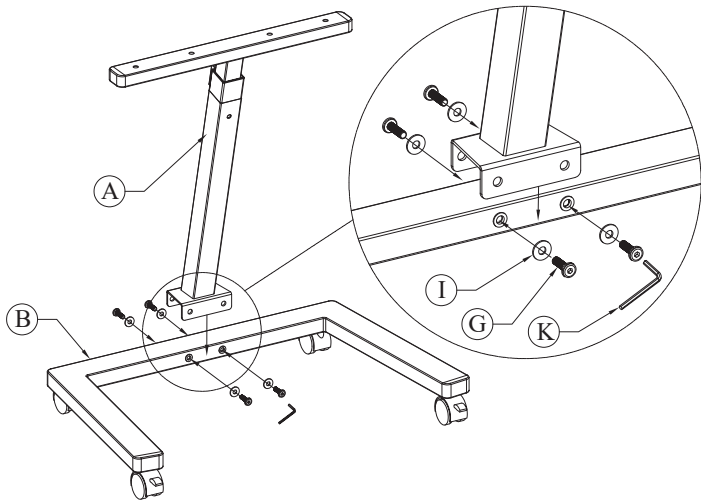
### STEP 3.

Install CASTERS (F) on the opposite side and screw them into the BASE (B). Tighten with WRENCH (J) until snug.



### STEP 4.

Align screw holes on T-BAR (A) and BASE (B). Place the WASHERS (I) under the SCREWS (G) and drive the screw into the thread holes. Tighten with HEX KEY (K) until snug.



### STEP 5.

Set the TOP (C) face down on a flat and soft surface like carpet or a blanket.

Align the arrows on the T-BAR (A) and TOP (C).

Place the WASHERS (I) under the SCREWS (H) and drive the screw into the thread holes. Gradually tighten the screw, but avoid applying excessive force as this may damage the TOP (C).

**IMPORTANT:** Make sure the arrows are pointing towards each other like the image below, and the T-BAR (A) points away from the curved side of the top. Make sure all screws on the TOP (C), T-BAR (A), and BASE (B) are snugly attached.

