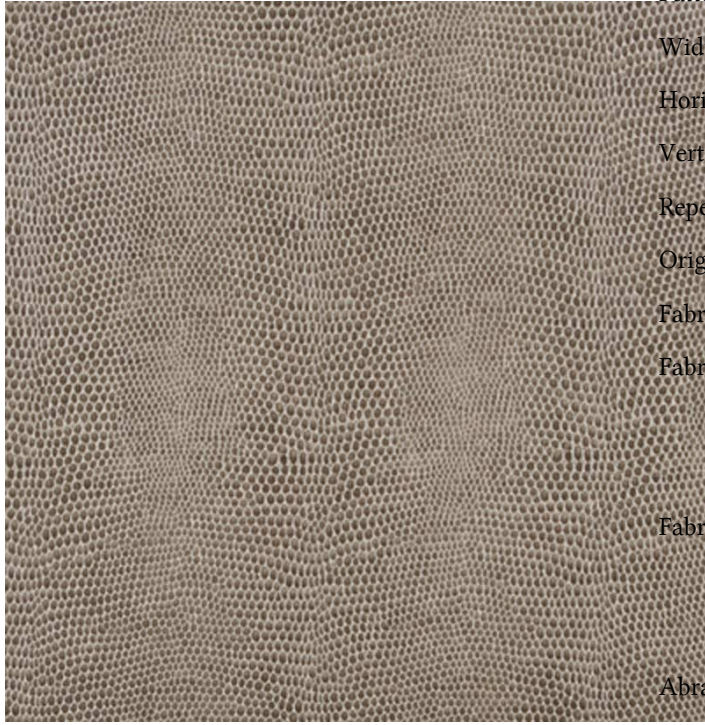




Fabric Detail for:15537 | 178-driftwood



| | |
|---------------------|---|
| Pattern: | 15537 178-driftwood |
| Width: | 54" |
| Horizontal Repeat: | 2.750" |
| Vertical Repeat: | 4.500" |
| Repeat Direction: | Up The Roll |
| Origin: | China |
| Fabric Grade: | 02 |
| Fabric Contents: | 60% Polyurethane 20% Cotton 20% Polyester |
| Fabric Performance: | ASTME 84-03 NFPA 260 UFAC - Class 1 |
| Abrasion: | 100,000 Double Rubs |
| Book Name: | EDGEWATER FAUX LEATHER |