

Bubble Bath Spa Mat



User's Manual

BUBBLE BATH SPA MAT

IMPORTANT SAFETY INSTRUCTIONS

When using electrical products, especially when children are present, basic safety precautions should always be followed:

READ ALL INSTRUCTIONS BEFORE USING THIS PRODUCT

DANGER: To reduce the risk of electric shock:

- Always unplug the product from the electric outlet immediately after using (and before cleaning).
- If the appliance falls into water, unplug it immediately. Do not reach into the water.
- Do not place or store appliance where it can fall or be pulled into a tub or sink. Do not place or drop into water or other liquid. Store in dry place.
- This appliance has to be positioned so that the plug is accessible.
- Parts incorporating electrical components must be located or fixed so that they cannot fall into the bath



Do not use or put up over bathtubs, showers or any basin etc. filled with water!

Do not submerge the appliance in water or liquid!

WARNING: To reduce the risk of burns, electrocution, fire, or injury to persons:

- The appliance should never be left unattended when plugged in. Always unplug the appliance when it is not in use.
- Close supervision is necessary when this appliance is used by, or near children, or disabled people.
- Use this appliance only for its intended use as described in this manual. Do not use any attachments that have not been recommended by the manufacturer.
- Never operate the appliance if it has a damaged cord or plug, if it is not working properly, if it has been dropped or damaged, or dropped into water. Return this appliance to the service center for examination and repair.

- Do not put and use the appliance next to/near electric heaters, hot surfaces or any heat sources. Fire, electric shock or injury might occur.
- Do not carry this unit by holding the power cord.
- Using the appliance for more than 30 minutes is not recommended. Continuous use could lead to the product being overheated. When the product is overheating, stop using it and allow it to cool down before operation.
- Keep the power cord away from heated surfaces.
- Disconnect the power cord by holding the plug attached to the cord instead of pulling the cord itself.
- Do not stand on this appliance.
- Never operate this appliance near an electrical oven or any heat source.
- Never operate the appliance if any openings are blocked. Keep the openings free of lint, hair and other particles.
- Do not use the appliance outdoors or operate it where aerosol (spray) products are being used or where oxygen is being administered.
- Do not use this product if you have sensitive skin or poor circulation. The use by unattended children or incapacitated persons can be dangerous.
- Never use while sleeping or drowsy.
- Do not plug in the appliance before the tub is filled with water. Do not overfill the tub and make the water run over the edge after you enter it.
- Never drop or insert any objects into any opening or the tube.
- Always ensure that the air inlet on the underside of the main unit is not covered.
- This appliance is equipped with a protective device which may make the appliance not operable under certain conditions (such as immersion of the appliance). If the appliance becomes inoperable, return it to the service center for examination and repair.
- Do not use this product with an extension cord.
This will damage the circuit protector.

INSTRUCTIONS

CAUTIONS

- Never use this appliance as a substitute for medical attention. Persistent ailments and symptoms could be more serious and should be investigated.
- This appliance should not be used in the following cases: Tuberculosis, benign and malignant tumors, hemorrhages, inflammations on the skin, phlebitis and thrombosis, open and fresh wounds, bruises, broken skin or varicose veins, or undetermined calf pain.
- Consult your physician, if you have any therapeutic questions regarding its use.
- Do not use on any unexplained pain before consulting your physician.
- Stop using the product if the pain increases or the swelling occurs after application.
- Do not use on any part of the body that is anesthetized.
- Do not use on any part of the body where surgery has been performed recently.
- It should not be used by children younger than 12 years old.
- It should not be used by people during pregnancy or anyone with high blood pressure or a heart condition.
- Do not use the appliance if you have sensitive skin.
- This appliance should not be left with children without supervision in order to avoid from being played with.
- As additional protection, the installation of residual current device (RCD) with a rated breaking current of not more than 30mA is recommended in the electric circuit of the bathroom. Please consult a qualified electrical engineer.

APPLIANCE CONTENTS:

1. MAIN UNIT

1.1 Main unit

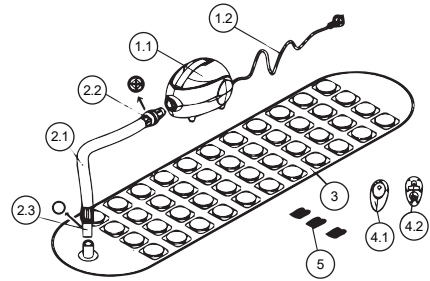
1.2 AC power cord 3M (approx.)

2. AIR HOSE: 2.5M (approx.)

2.1 Air hose

2.2 Hose end with valve and aroma clip

2.3 Hose end without valve



The hose end (fig 2.2) should be plugged

into airflow hole of the main unit, and another hose end (fig 2.3) should be connected to the bath mat (fig 3).

3. BATH MAT WITH SUCTION CUPS ON UNDERSIDE

4. REMOTE CONTROL

4.1 Remote control with function button

4.2 Suction cup of the remote control and the battery (CR2032) compartment

5. 3x AROMA CLIP WITH PADS

6. SPARE COTTON PADS FOR AROMA CLIP (NOT SHOWN)

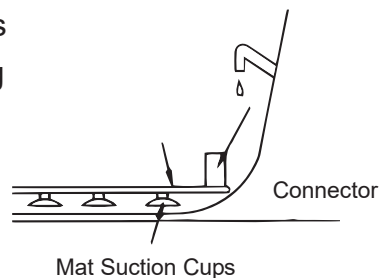
ASSEMBLY:

- Remove the main unit and all accessories from the box and check if there's anything damaged.

- Be sure the Control Unit is unplugged. Place control unit on the floor or a level, sturdy surface near your bathtub.

Do not place unit where it can fall into the bathtub.

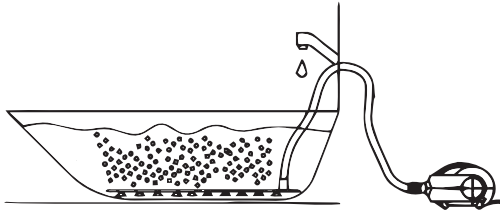
- Make sure the **ON/OFF** switch is at the position "O"



- Place the bath mat into bathtub and press it down. Use suction cups to stick the bath mat firmly to the tub (it must not slide around). The suction cups will stick better if they are slightly wet. The connector on the bath mat is on the end where your feet should be.
- Make sure there is a pleasant room temperature in the bathroom.
- Before using the product for the first time, we suggest to give your bath tub a deep cleaning for the soft mat to adhere to the tub floor better
- Connect the hose end with the valve and aroma clip to the main unit and ensure it is locked by turning it counterclockwise. Connect the other hose end to the connector on the bath mat.

CAUTIONS:

For safety, the main unit must be kept at least 60CM away from the bathtub and always keep the floor dry when the appliance is put on the floor.



AROMA CLIP ASSEMBLY:

- Put a drop of essential oil on the cotton pad, place the cotton pad on aroma clip and close the aroma clip (Fig. 1)
- Insert the aroma clip into the tube end (Fig. 2)
- Plug the air hose into main machine (Fig. 3)

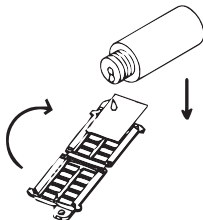


Fig. 1

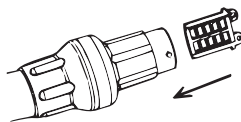


Fig. 2

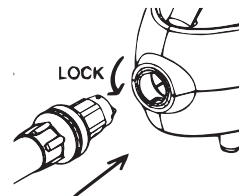


Fig. 3

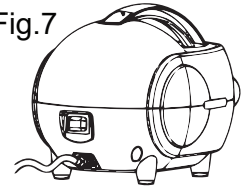
Note: After using please dispose properly the cotton pad

Note: Too much essential oil may cause aroma clip erosion.

USER MAINTENANCE INSTRUCTIONS:

The sprinkler bath can be controlled directly from the set by means of on/off switch or with the remote control.

Fig.7



Unit Side

SET CONTROL

The **ON/OFF** switch is on the back side of the (Fig.7). You can find the **ON/OFF** on the back of the unit.

“0” : The device is switched off. Remote control won't work

“I” : The device will be turned on without using remote control and will run at low intensity level. In this mode, you can still use the remote control to adjust the intensity level and turn off the product.

“II” : The device is in stand-by mode and can only be operated by the remote control.

The appliance switches off automatically after 20 minutes.

REMOTE CONTROL

This unit can be operated with the remote control by pointing the remote control at the infrared sensor on the handle of the main unit, and pressing the function button. Also, the remote control comes with a suction cup on the back. Slightly wet the suction cup and press it firmly to the bathroom wall or to the side of the bathtub. Do not immerse the remote control in water.

When using the remote control, the selected setting is indicated by the colored LED lights (Fig.7) on the handle.

- The lower intensity level- the green LED display lights up
- Press once more and the machine will reach the higher intensity level
 - Red LED display lights up
- Press once more and the machine switches into programme mode
 - Orange LED display lights up

FUNCTION BUTTON ON THE REMOTE CONTROL

“Power On /Low → High → Program → Power Off”

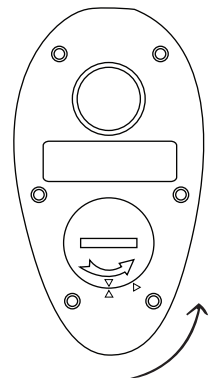
BUTTON:

1. Press the button once, the machine will turn on with Low intensity
2. Press the button the second time to change the intensity to **Hi**
3. Press button for the third time to enter program mode. Program mode means the intensity will change automatically with the rotation of Low, Medium and High.
4. Press the button the fourth time to turn the machine off.
5. The appliance will turn off automatically after using 20 minutes



BATTERY:

To change the battery, simply use a coin to open the cover of the battery compartment on the back of the remote control, once the battery is inserted, use the coin again to close the battery compartment.



Battery Operated 3V CR 2032

DISPOSAL OF BATTERIES

Batteries do not belong in household waste. As a consumer, you have the obligation by law to take all used batteries to public collection points in your area or where batteries are sold.

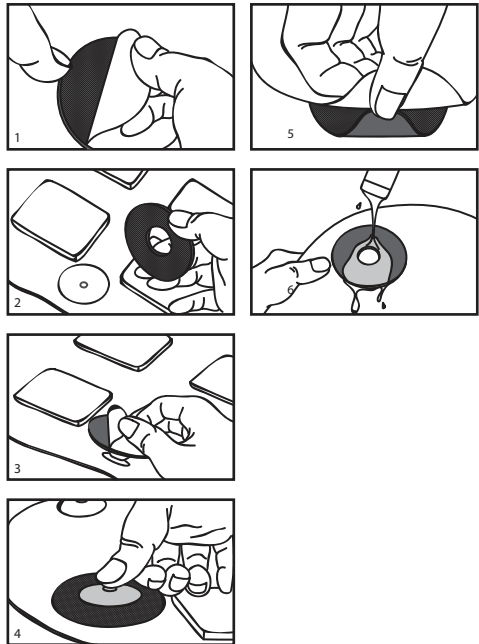
AIR BUBBLES:

Hundreds of pinholes on the bath mat produce millions of air bubbles every second.

DOUBLE-SIDED ADHESIVE PLATE:

Check if the plates are clean and without deformation before using. If the round plate is deformed, please submerge it into warm water (similar temperature as the bath water) for 5~10min. Always wait until the round plates are completely dry before attaching to the suction cups.

1. Tear off the protection paper, the side with non-woven fabric is to be attached on the suction cup.
2. We suggest to attach 4 round plates on suction cups located in 4 corners and 1 in center.
3. Remove the plastic cover on the other side of the round plate. The soft mat is ready to be used.
4. Press down every suction cup.
5. Remove the soft mat from the bath tub. Slide your fingernail under the suction cups (or round plates) to release the vacuum. Do not remove the soft mat by pulling it.
6. Cleaning the round plates is easy; just use your fingers and some water to clean it.



CLEANING, DISINFECTION AND STORAGE

- Clean the main unit with a soft damp cloth. Clean the bath mat with a mild detergent or soap; it is recommended to clean the bath mat each time after being used.
- Disinfect the bath spa periodically to keep it bacteria free. If the appliance is used frequently, it is advisable to disinfect it on weekly basis. Use a household disinfectant by following the manufacturer's instructions.
- The best way to take the bath mat out of the tub is by carefully sliding a fingernail under suction cups to release the vacuum and pulling the mat sideways gently instead of tearing or pulling it.
- It is recommended to turn the bath mat over, lay it flat, and press it lightly to squeeze any remaining water.
- Store the appliance in a dry and clean place. If it will not be used for a long period of time, store it in the original package.

CAUTION: *READ SAFETY RULES AND OPERATING INSTRUCTION CAREFULLY. THIS PRODUCT IS INTENDED FOR INDOOR USE ONLY.*

TWO-WIRE POLARIZED ATTACHMENT PLUG INSTRUCTIONS

This appliance has a polarized plug (one blade is wider than the other). As a safety feature, this plug will fit in a polarized outlet only one way. If the plug does not fit fully in the outlet, reverse the plug. If it still does not fit, contact a qualified electrician. Do not attempt to bypass this safety feature.

ALCI Safety Device

This appliance is provided with an appliance leakage circuit interrupter (ALCI) safety device. This device is designed to make the unit inoperable under some abnormal conditions. The ALCI safety device is equipped with a test button in order to check its operation. This unit should be tested before using to make sure the safety device is operational.

ALCI Testing

It is recommended to test the ALCI before using the appliance each time.

After plugging it in:

1. Press the reset button on the ALCI device.
2. Press the test button. The reset button should pop out and the appliance will stop the operation. This verifies that the safety device is operating properly.
3. Press the reset button to reactivate your ALCI safety device.
4. The bubble bath mat now is ready for use.

Note: If the reset button pops out during use, press the reset button. If the reset button cannot be pressed down, stop using the appliance and return it to the distributor or the designated service center.

Technical Data:

Voltage: 120V ~ 60Hz

Watts: 350W

Remote Control: 3V CR2032 Lithium Battery



VISIT US ONLINE:

Have a question?

Need service or repair?

Want to leave a comment?