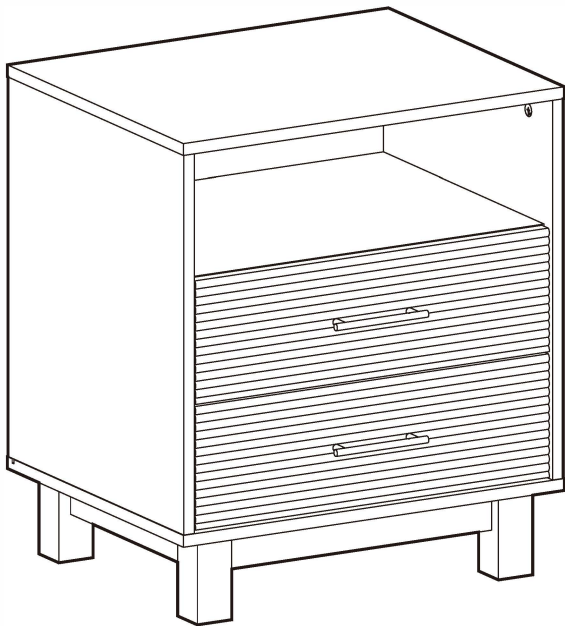
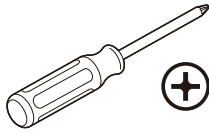


INSTRUCTION MANUAL

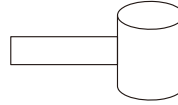


Night Stand

Tools Needed (Not Included)

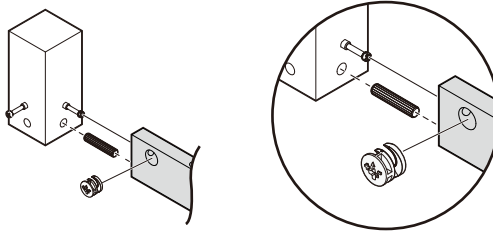


Phillips Screwdriver



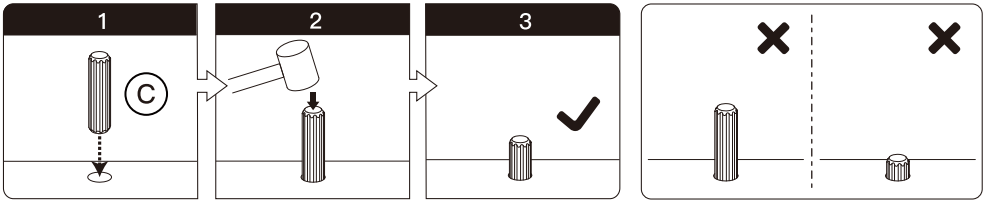
Rubber Mallet

How the Assembly System Works



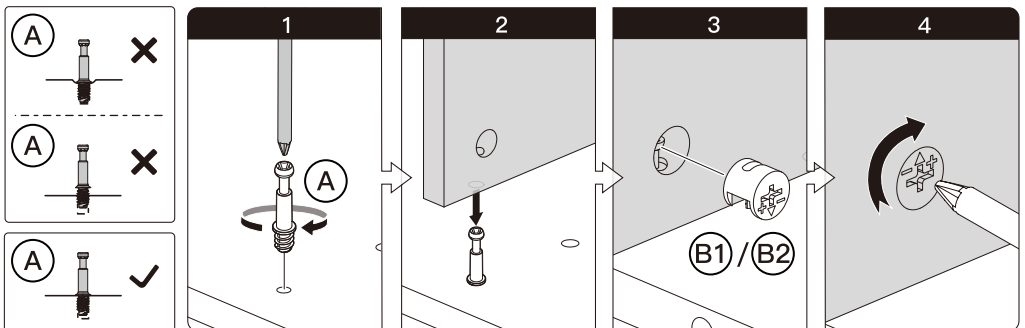
How to Install Wood Dowels

Insert the wood dowel [C] at least halfway into the hole. IF NECESSARY, lightly tap the wood dowel with a self-supplied rubber mallet.



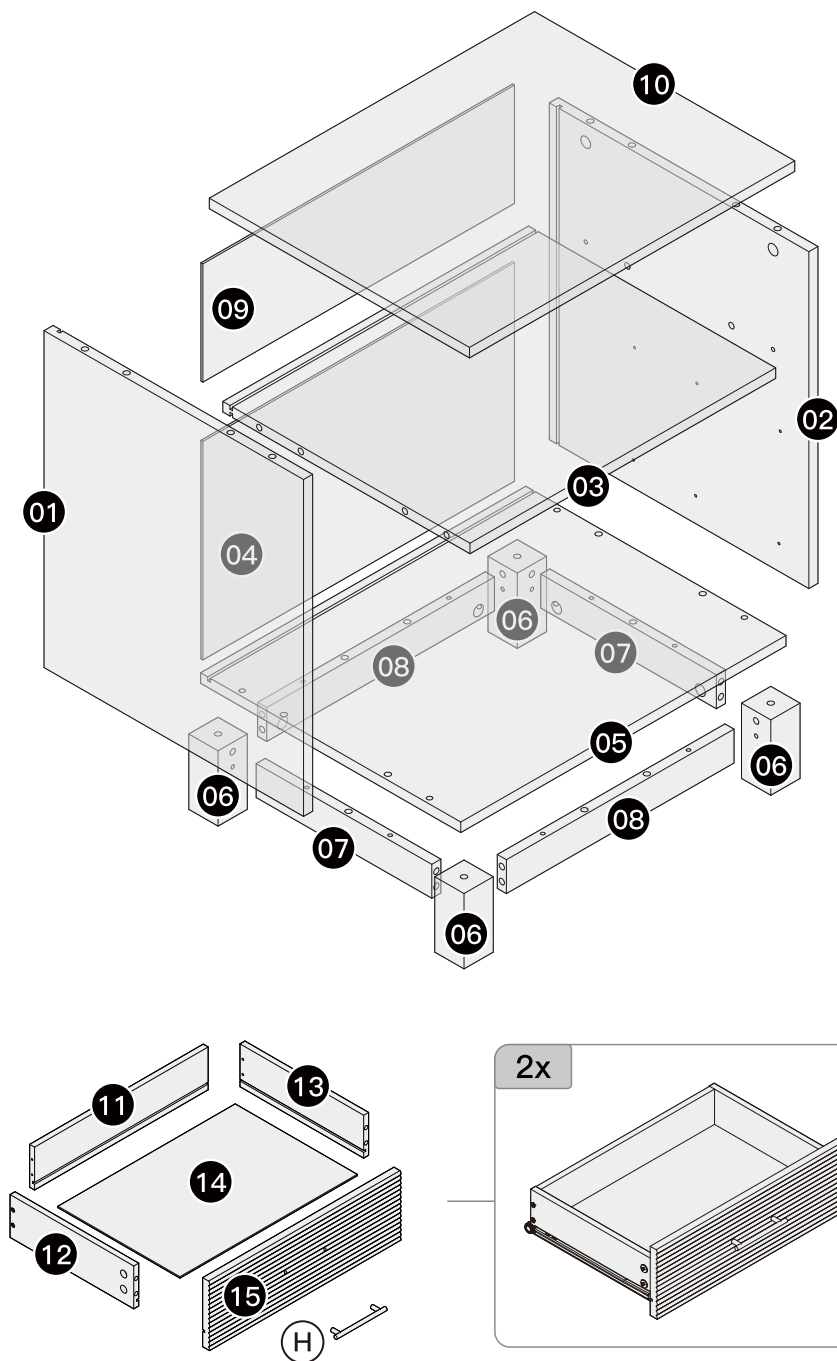
Using the Cam Lock System

1. Screw cam bolt [A] into threaded hole on the panel.
2. Connect both panels together. Make sure cam bolt [A] goes into the pre-drilled hole on the end of the panel for cam lock [B1/B2].
3. Insert cam lock [B1/B2] into large hole on the panel. Make sure the open slot on cam lock [B1/B2] faces the head of cam bolt [A].
4. Turn cam lock [B1/B2] clockwise to tighten.



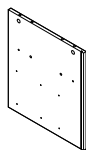
You are now ready to assemble the unit.

Exploded Drawing



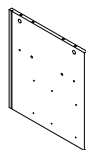
Supplied Parts and Hardware

01 x 1



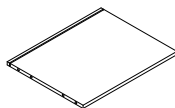
End Panel

02 x 1



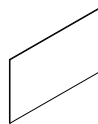
End Panel

03 x 1



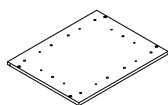
Middle Panel

04 x 1



Bottom Back Panel

05 x 1



Bottom Panel

06 x 4



Leg

07 x 2



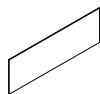
Bottom End Rail

08 x 2



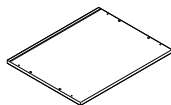
Bottom Side Rail

09 x 1



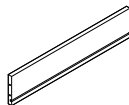
Top Back Panel

10 x 1



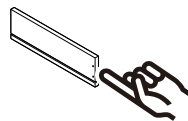
Top Panel

11 x 2



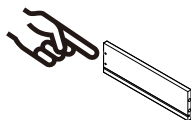
Drawer Back Panel

12 x 2



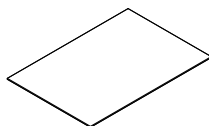
Drawer Side Panel (L)

13 x 2



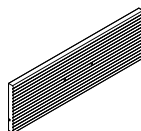
Drawer Side Panel (R)

14 x 2



Drawer Bottom Panel

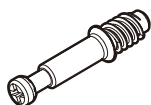
15 x 2



Drawer Front Panel

Supplied Parts and Hardware

(A) x 24



Ø6 x 35mm
Cam Bolt

(B1) x 16



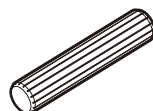
Ø15 x 11mm
Tall Cam Lock

(B2) x 8



Ø15 x 9mm
Short Cam Lock

(C) x 30



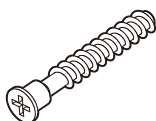
Ø8 x 30mm
Wood Dowel

(D) x 24



Ø3.5 x 12mm
Screw

(E) x 4



Ø6 x 50mm
Screw

(F) x 16



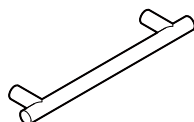
Ø4 x 38mm
Screw

(G) x 4



Ø4 x 25mm
Bolt

(H) x 2



Drawer Pull

(I) x 8



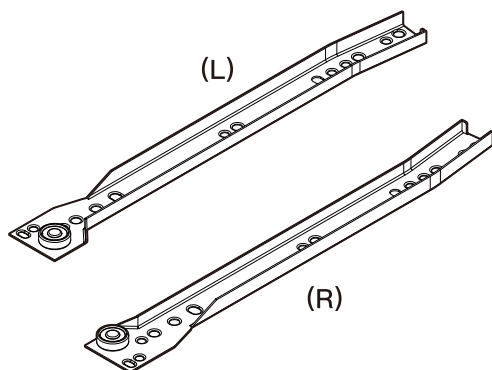
Back Panel Support

(J) x 8



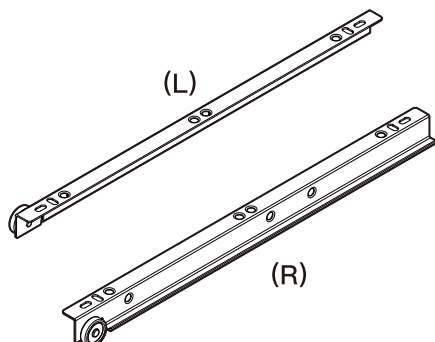
Ø3 x 17mm
Screw

(K1) x 2



Stand Slides

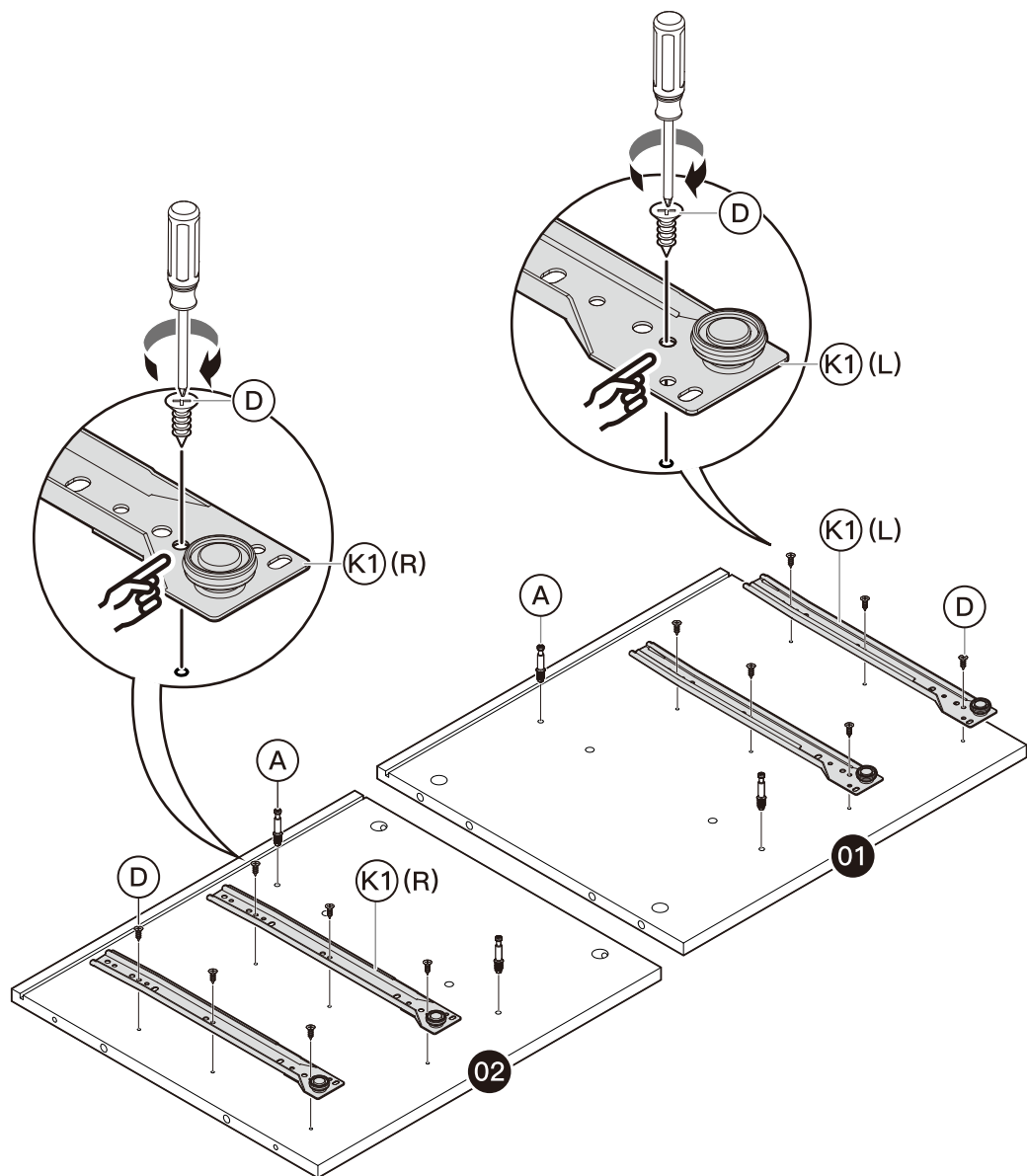
(K2) x 2

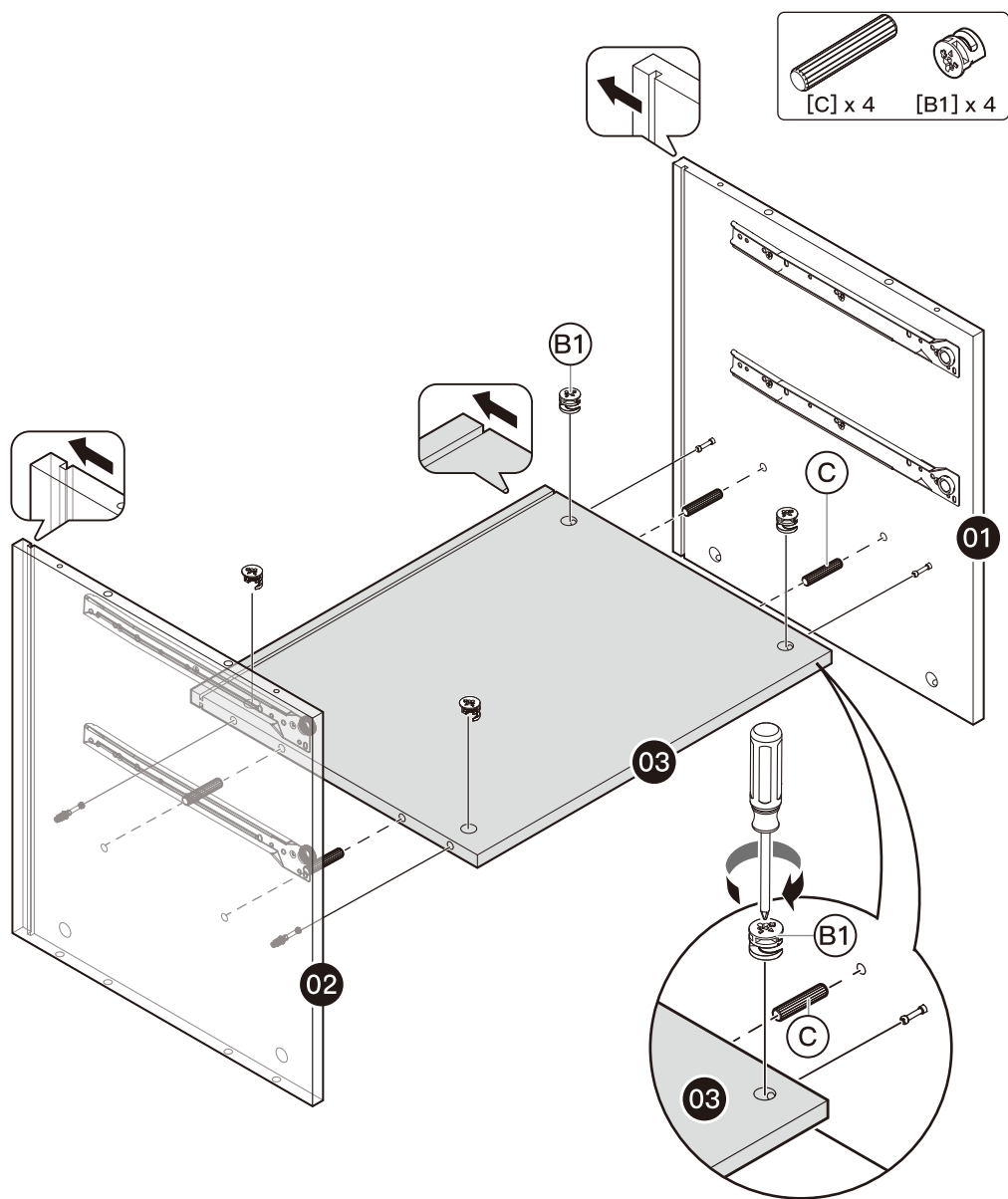


Drawer Slides

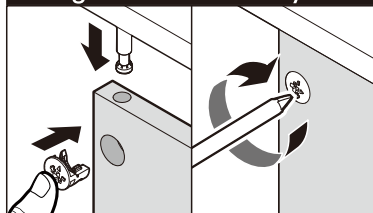
1

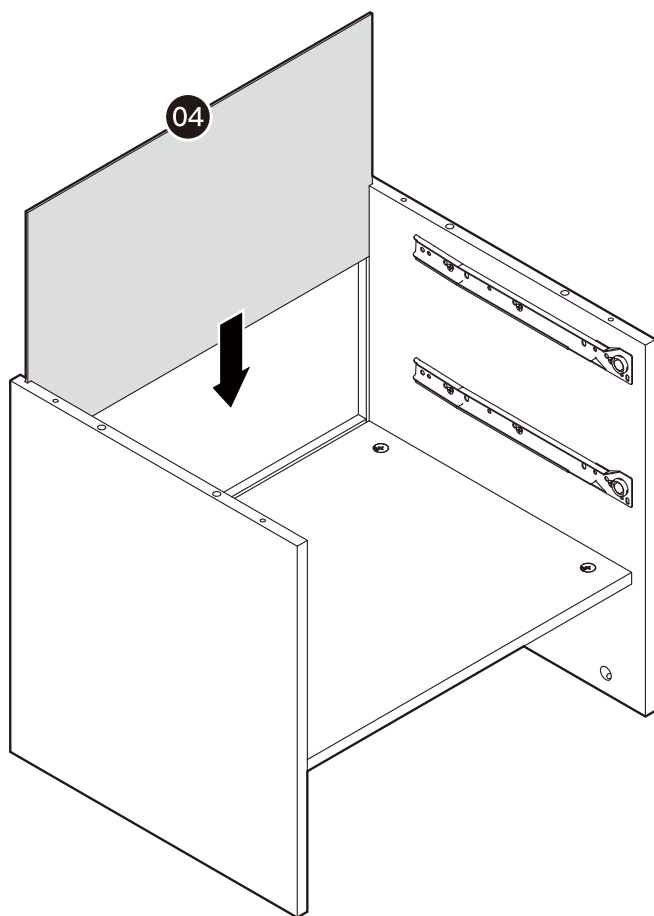
Note: Fully tighten screws to avoid loose drawers and ensure smooth movement.

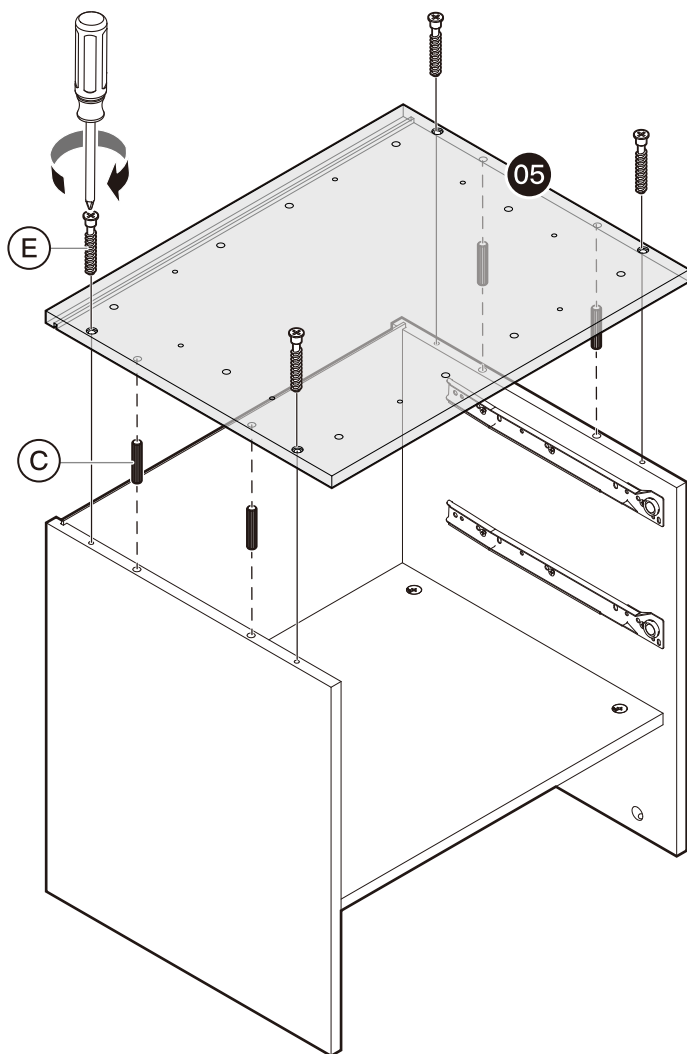
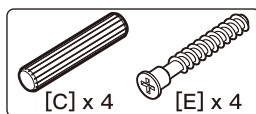




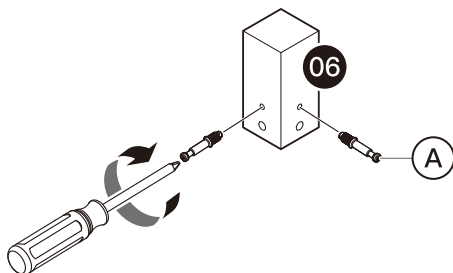
Using the Cam Lock System



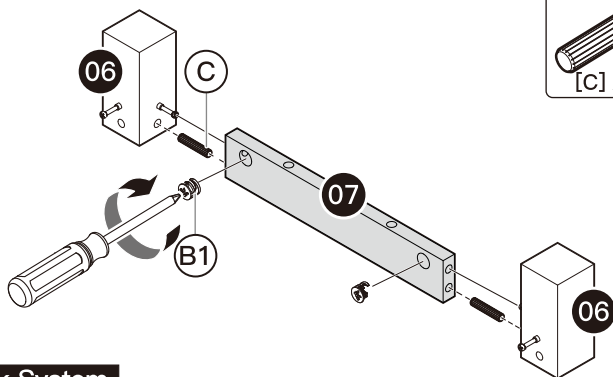
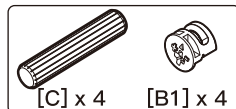




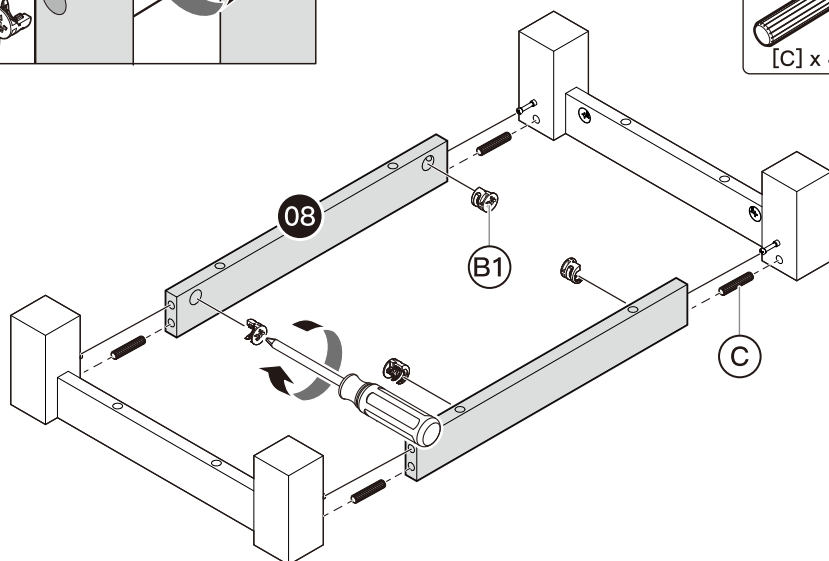
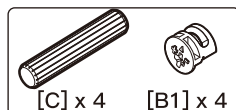
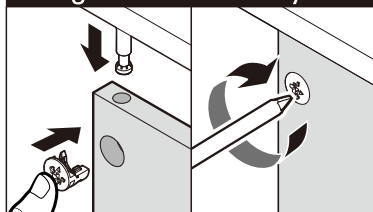
4x

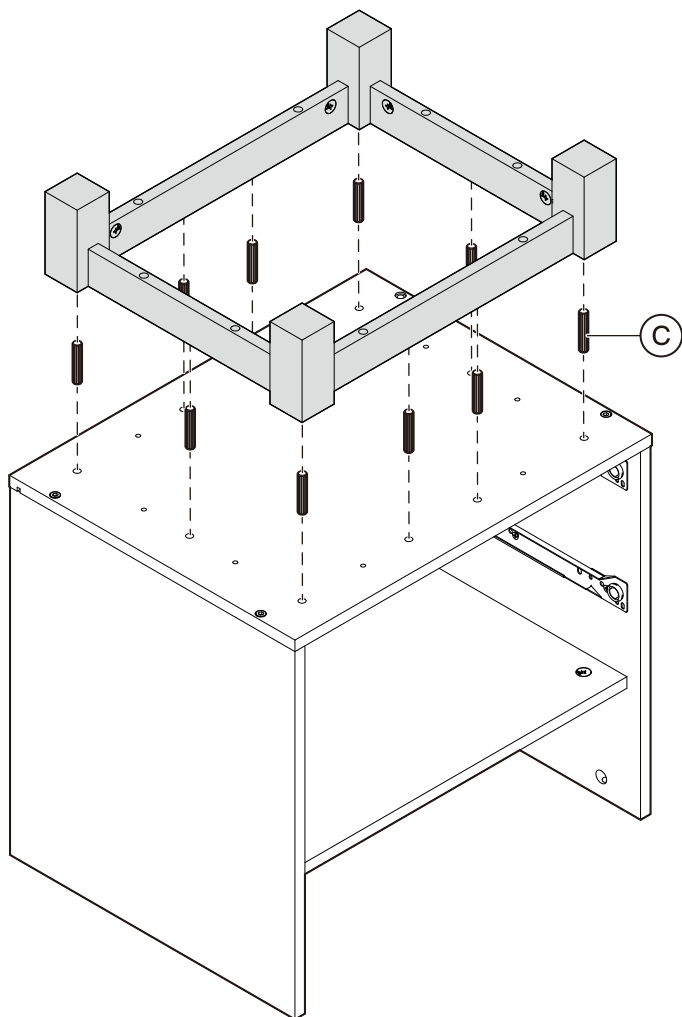


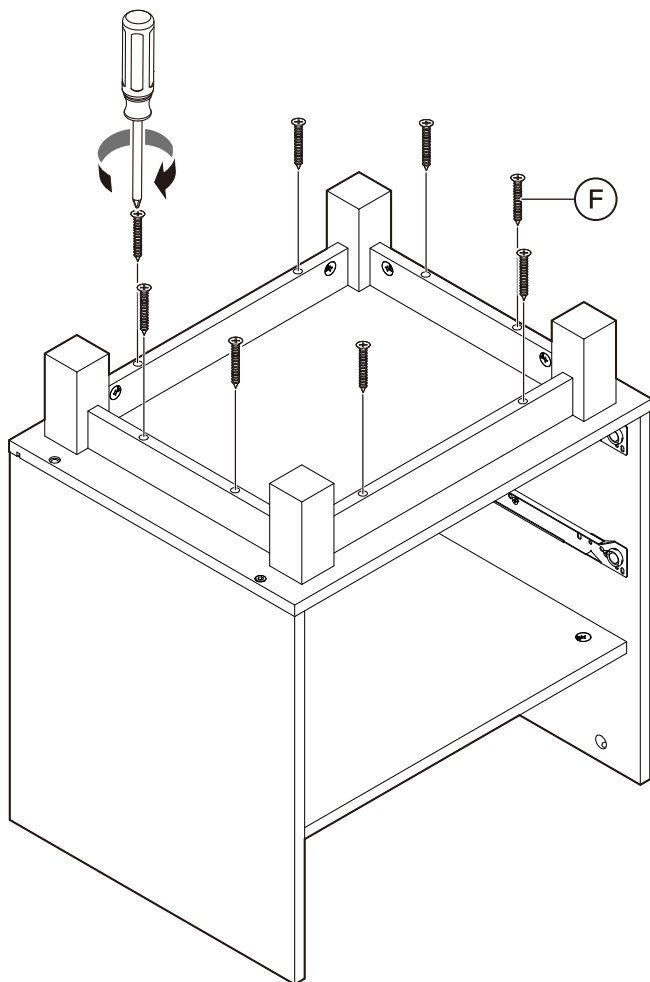
2x



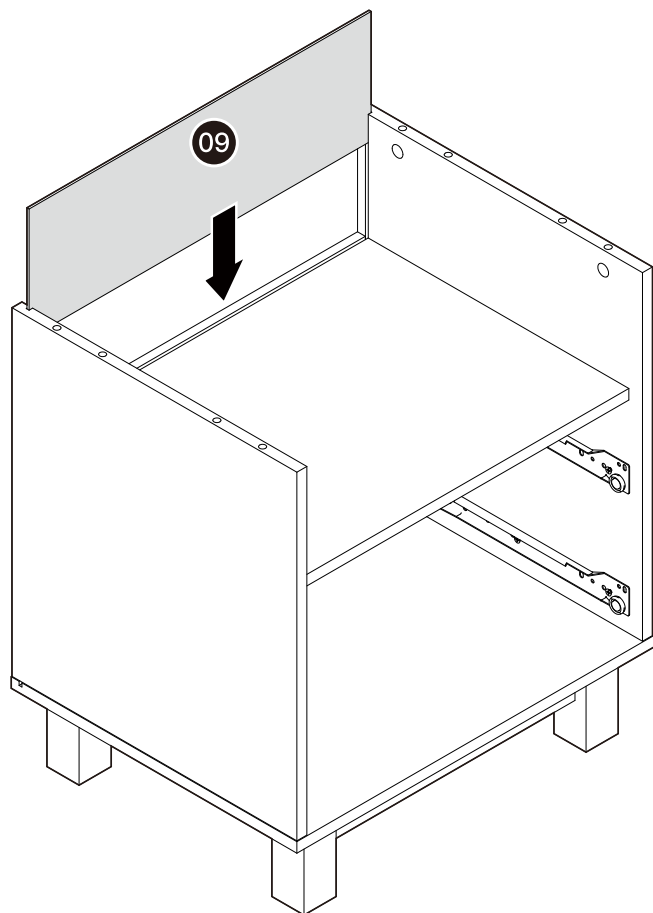
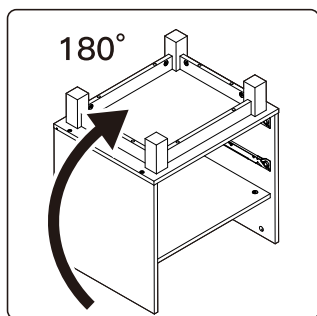
Using the Cam Lock System

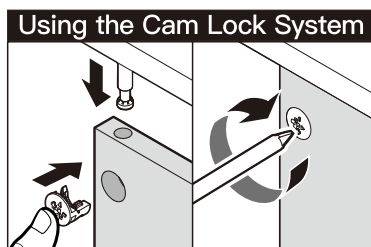
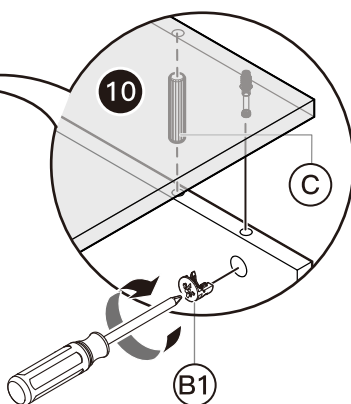
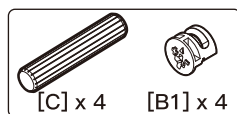
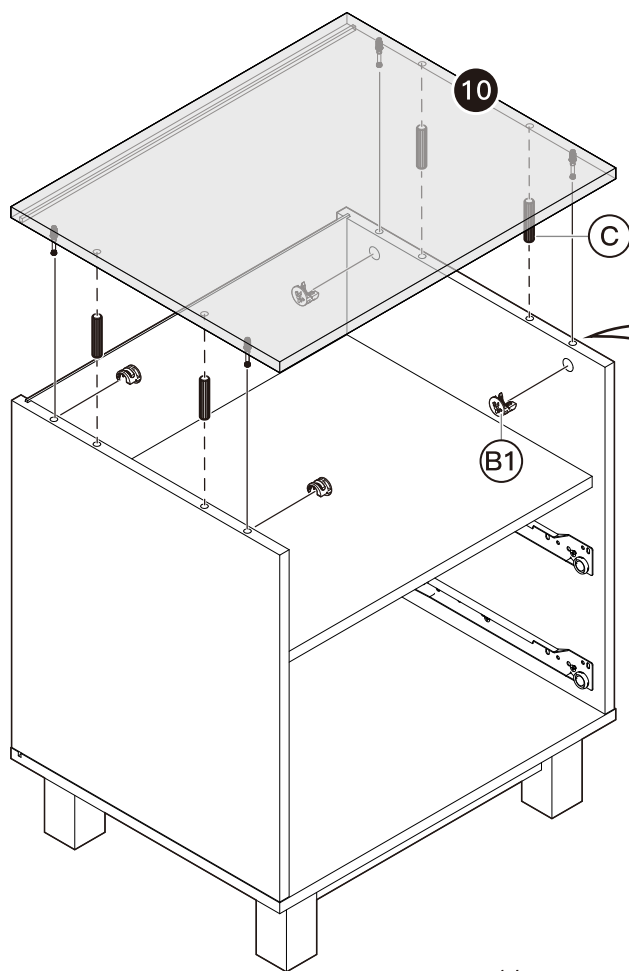
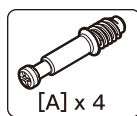
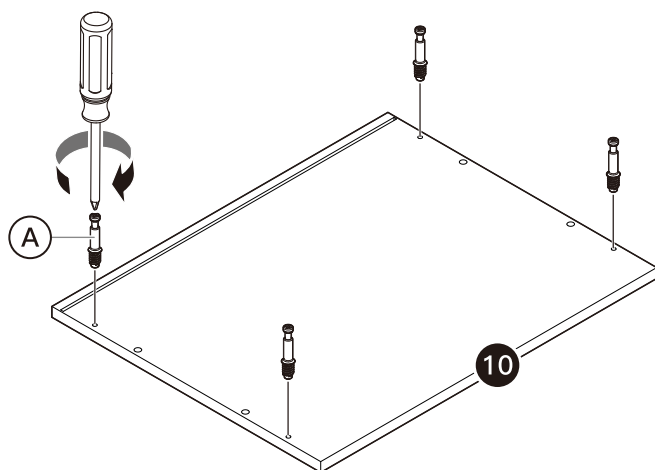






3





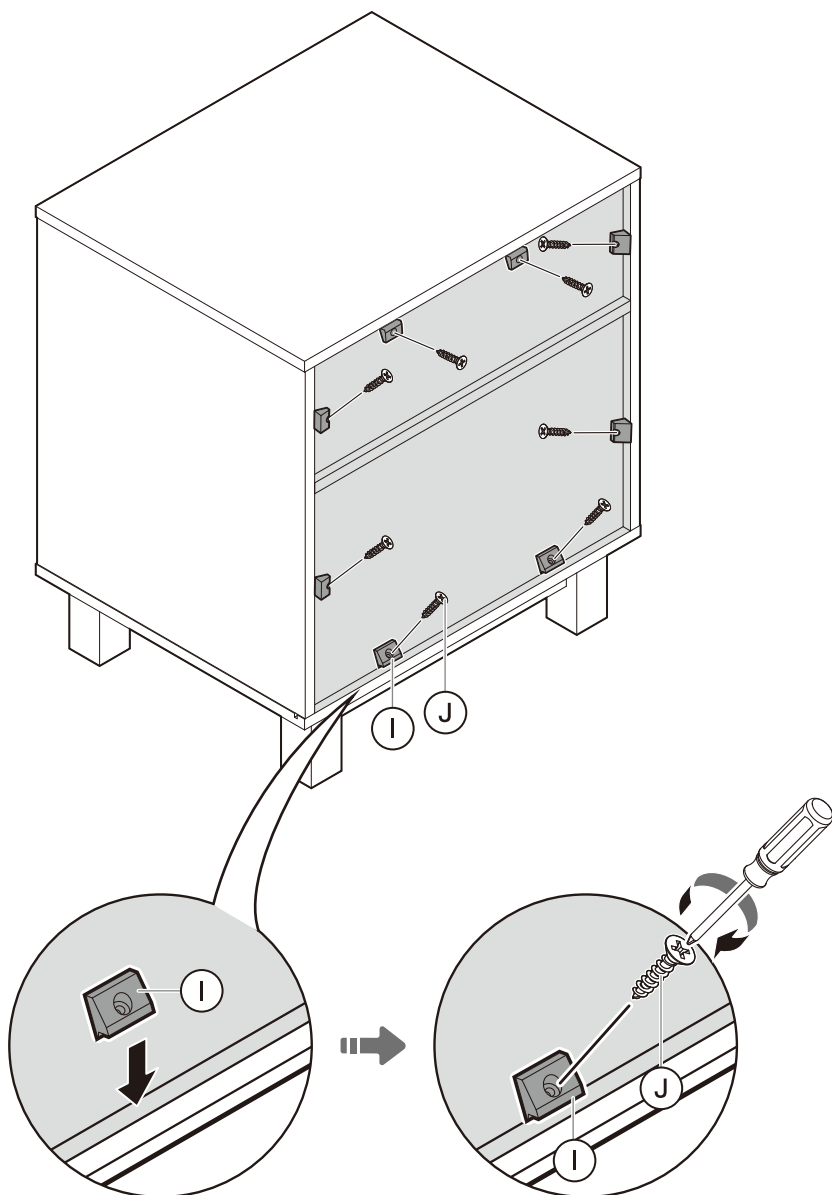
4

Note: There are no pilot holes for screws [J].
Insert the back panel supports [I] evenly into the
gaps, then tighten screws [J].



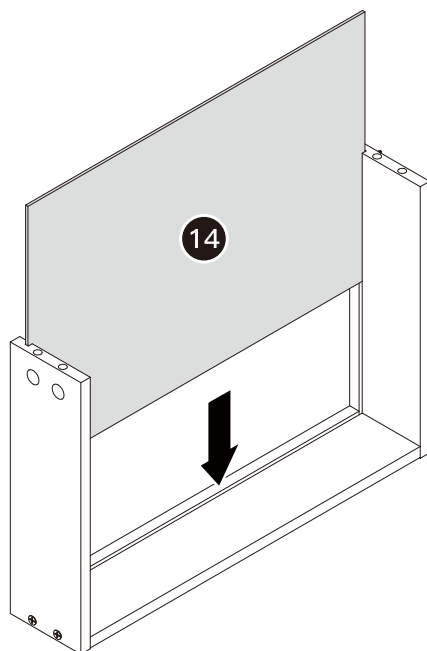
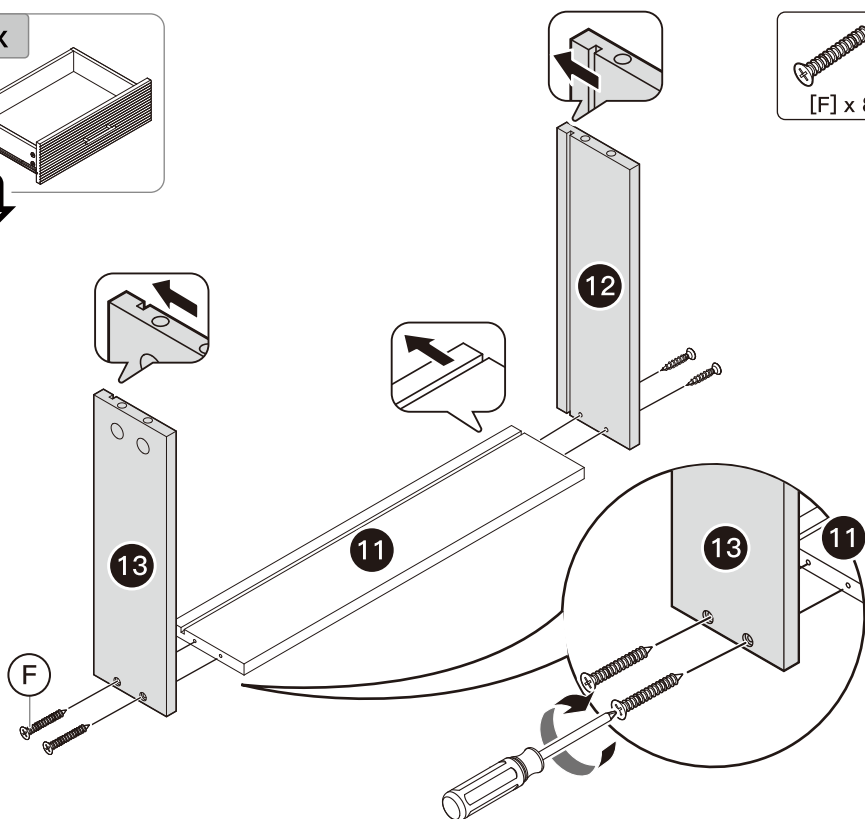
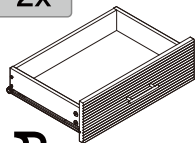
[I] x 8

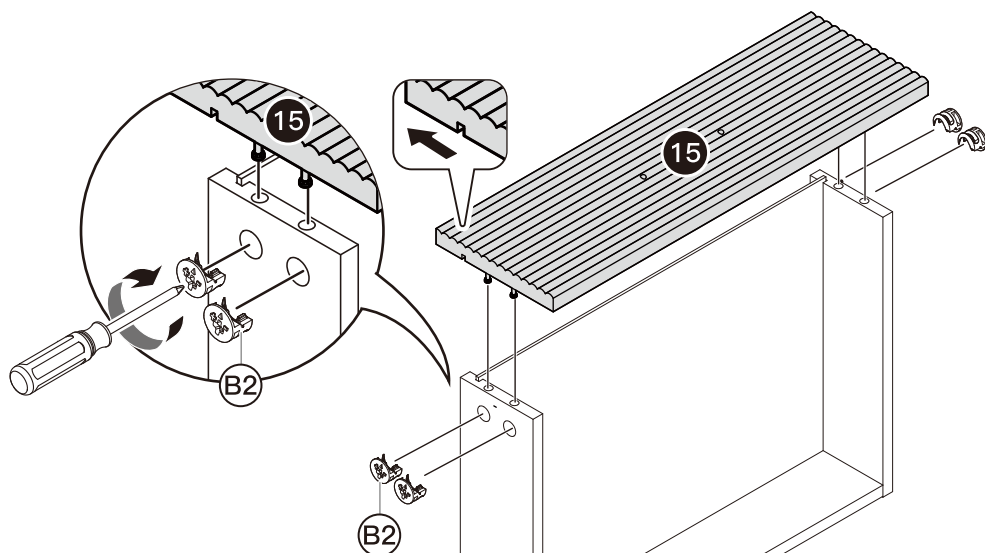
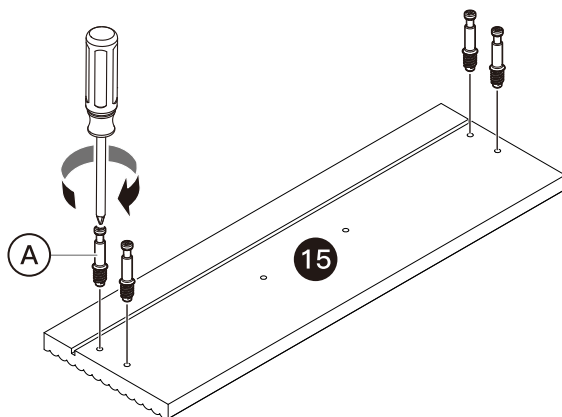
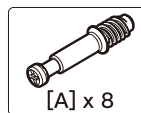
[J] x 8



5

2x





Using the Cam Lock System

