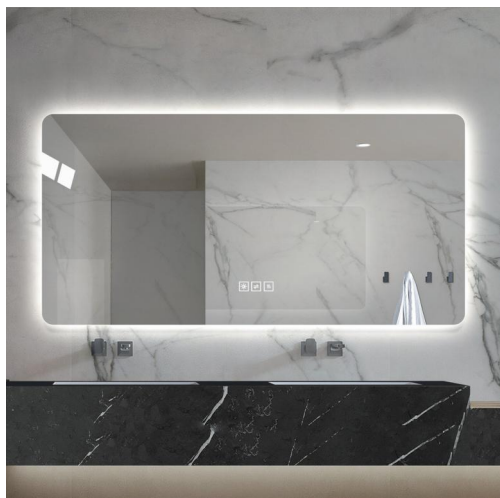


Mirror introduction



Instructions for use Function Indicator



Short press to turn on/off
Long press to adjust light brightness



Quick press to change light colors



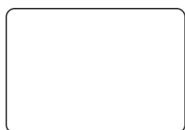
Intelligent temperature control demisting

Installation Instruction

Before
Installation

- * Please make sure that the installed wall is a load bearing wall.
- * Please attention to avoid wires or water pipes when drilling.

Product and accessories



Mirror*1



Expansionscrew*2



Screw*2

Tools Needs (not included in the package)



Pencil



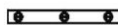
Electric Drill



Hammer



Tapeline

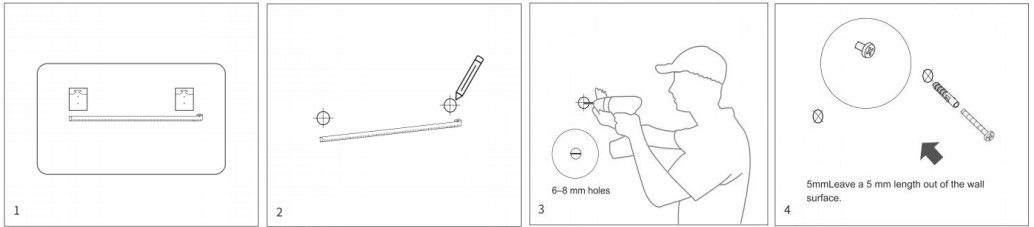


Level Ruler



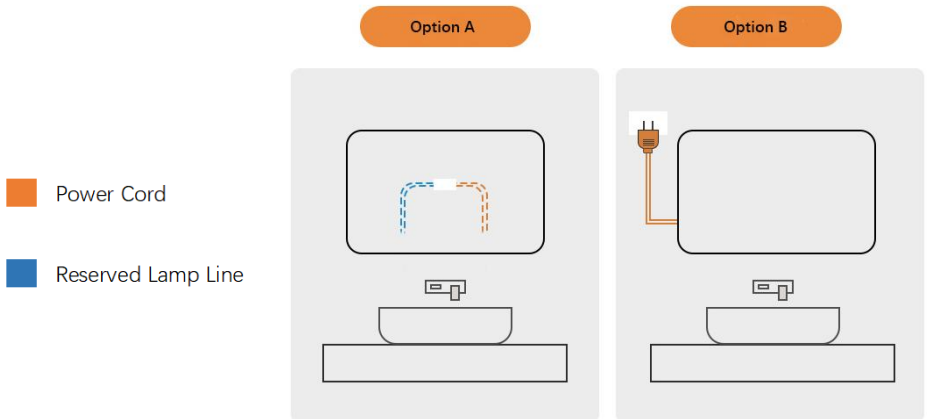
Screwdriver

Mirror introduction



1. Measure the hanger spacing. Measure the distance between 2 hangers with a tape measure.
2. Mark drilling locations. Determine the specific locations of drilling with a tape measure, and mark it out with a pencil.
3. Drill holes with a percussion drill. Drill 6-8 mm holes in the wall at marked locations with a percussion drill.
4. Put an expansion tube into each hole and put a screw into each tube. Strike expansion tubes into drill holes with hammer and put screws into expansion tubes with a screwdriver. Leave a 5 mm length out of the wall surface.

Wiring Instructions



Cut out the plug and the reserved wire connection port, which can be hidden on the back of the mirror

The mirror plug is directly plugged into the wall socket for use (the socket cannot be on the back of the mirror)