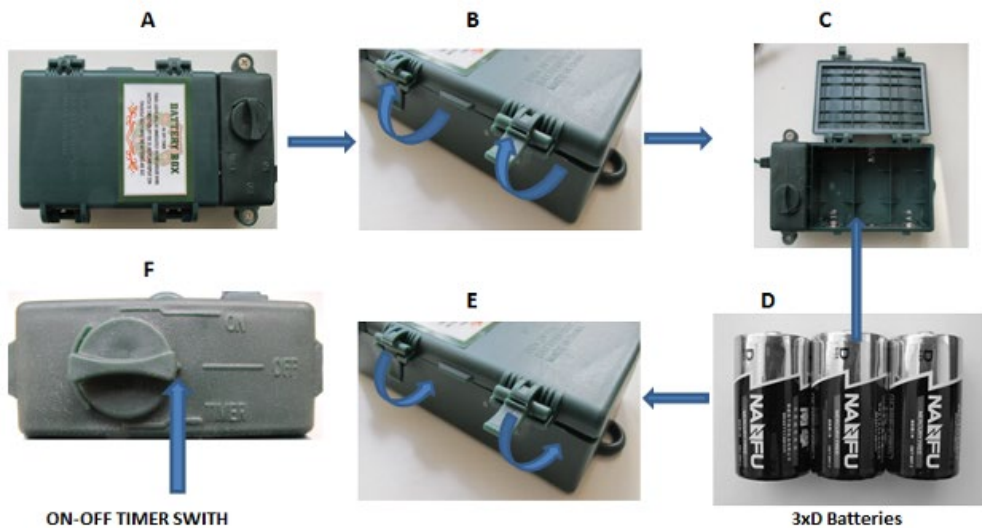


## CLASSIC PRE-LIT WREATH 30 INCH



### Instructions:

- 1) Place the wreath on a flat surface. Straighten and separate all branch tips. To achieve maximum fullness, tips should not touch one another. To shape the bow, slip fingers into the loop molding the loop into a rounded shape, straighten tails so they are hanging down.
- 2) From back of the wreath, find the battery box and open it. Insert 3 D batteries into the battery box then close it (see Figure A, B, C, D & E).
- 3) Each battery box is featured with a 3-position switch: On – Off – Timer (see Figure F). The timer enables the LED lights to remain on for 6 hours, then off for the next 18 hours. This will repeat daily. Suitable for indoor or outdoor use.



## Battery Warning:

1. Adult supervision is necessary when changing and disposing of batteries.
2. Slide switch to "OFF" position when changing batteries.
3. Confirm proper polarity when inserting batteries.
4. Do not attempt to charge non-rechargeable batteries. Only recharge rechargeable batteries and do it under adult supervision.
5. Do not mix old and new batteries. Do not mix alkaline, standard (carbon-zinc), or rechargeable (nickel-cadmium) batteries.
6. Replace batteries when the light is faint.
7. Replace all batteries at the same time.
8. Remove exhausted/dead batteries from unit.
9. Do not short circuit terminals under any circumstances.
10. Do not allow the bottom of the unit to come in contact with heat.
11. Never throw batteries in a fire or attempt to open batteries. Batteries may explode or leak.
12. Remove all batteries from unit before storage.
13. Batteries are harmful if swallowed. Keep away from young children.