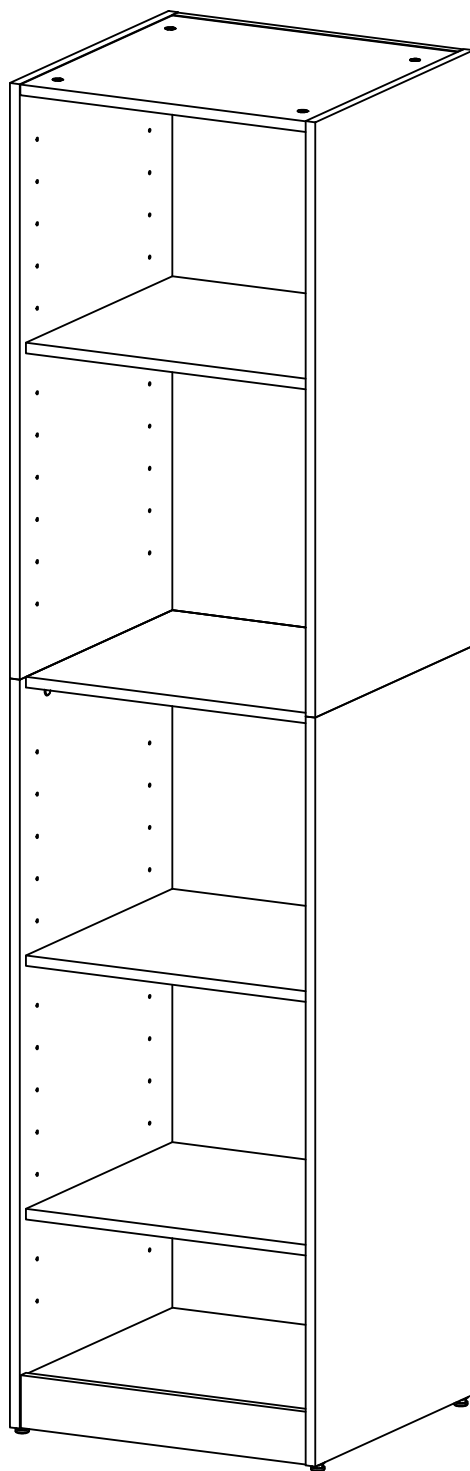


Installation & Assembly



△ NOTE:

If there are parts missing from your order or if your product was damaged during shipping, PLEASE CONTACT US DIRECTLY.

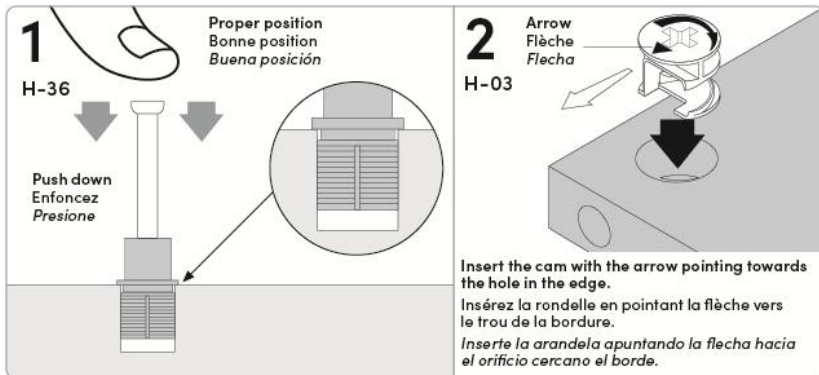
△ NOTE :

S'il vous manque des pièces ou si votre meuble a été endommagé pendant le transport, VEUILLEZ NOUS CONTACTER DIRECTEMENT.

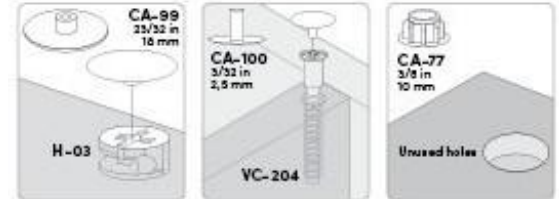
△ NOTA:

En caso de piezas faltantes o si su producto fue dañado durante el envío, POR FAVOR CONTACTENOS DIRECTAMENTE.

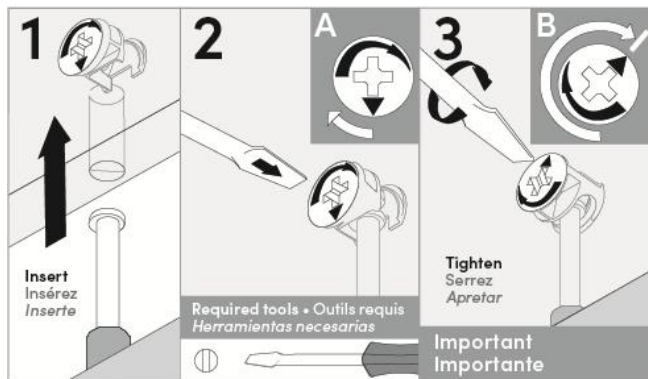
Important Notice / Note importante / Nota importante



When you have completed the assembly of your new furniture, install plastic caps



When you have completed the assembly of your new furniture, install self-adhesive caps on unused holes.

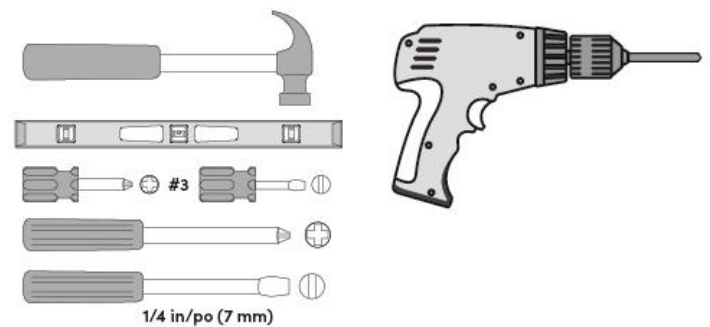


Make sure to properly tighten each cam to ensure furniture solidity. Otherwise, parts could be damaged or the user could be injured.

Assurez-vous de bien resserrer chaque rondelle pour assurer la solidité du meuble. Dans le cas contraire, des pièces pourraient être endommagées ou l'utilisateur pourrait se blesser.

Asegúrese de bien apretar cada tornillo de araña para garantizar la solidez del mueble. De lo contrario, podría provocarse daño a las piezas o las personas.

Required tools • Outils requis • Herramientas necesarias



The use of electric tools must be made with vigilance.
L'utilisation d'outils électriques doit être faite avec vigilance.
Las herramientas eléctricas deben utilizarse con sumo cuidado.

Important Notice • Note importante • Nota importante

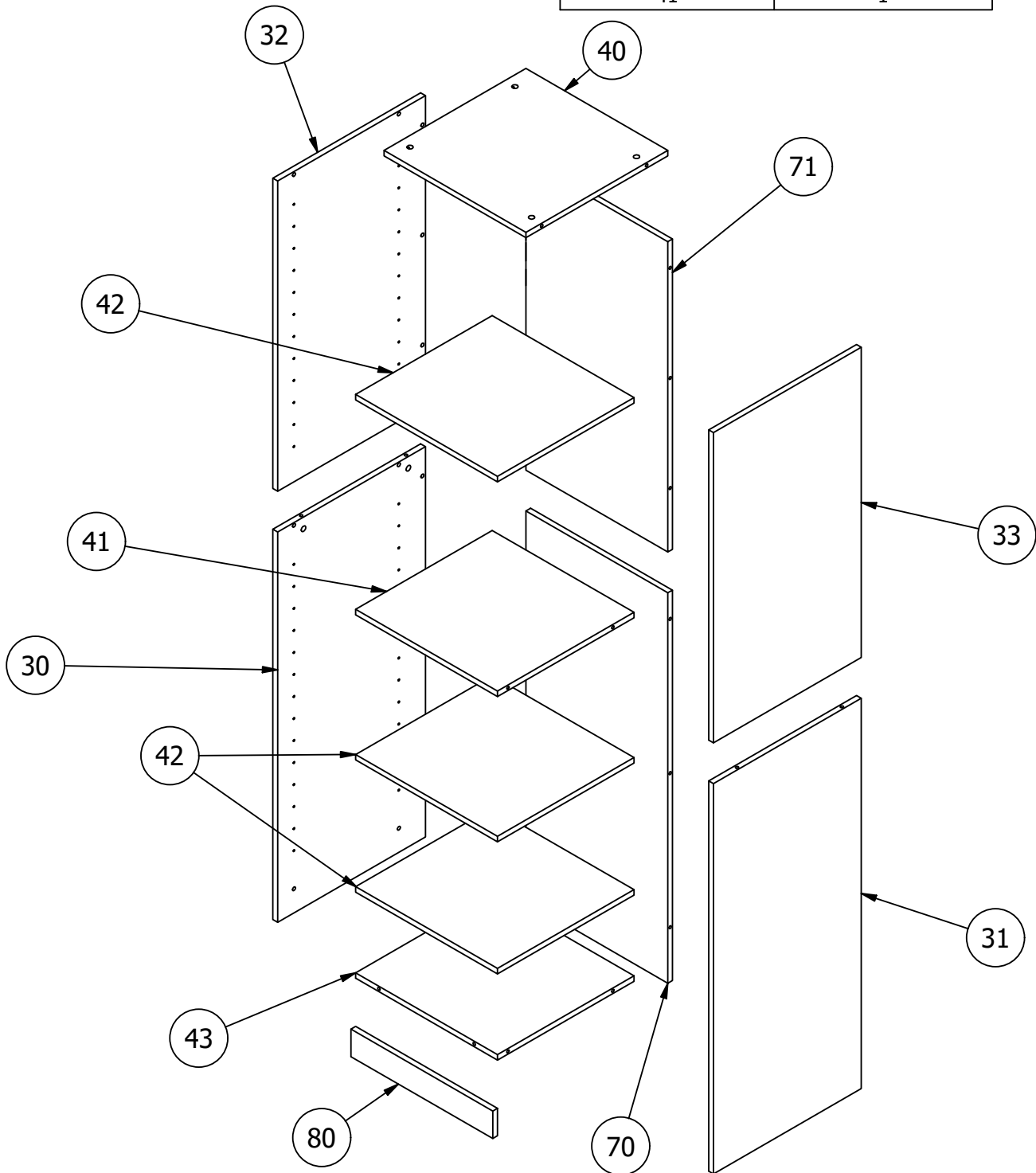
For future reference and to allow us to serve you better, please complete the self-adhesive sticker and apply it in an accessible space such as under shelf.

Pour que nous puissions mieux vous servir en cas besoin, veuillez compléter l'autocollant et l'apposer dans un endroit facilement accessible tel que dessous d'une tablette.

Para futuras referencias y un mejor servicio, por favor pegue la etiqueta adhesiva en un espacio accesible, Por ejemplo, la parte interior del estante.

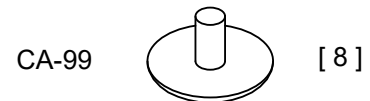
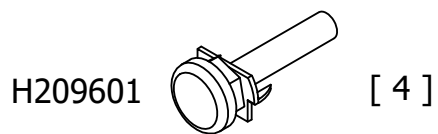
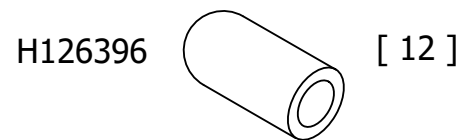
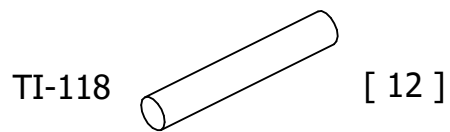
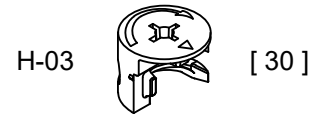
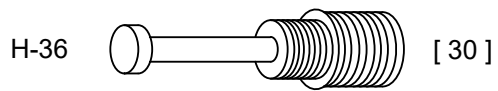
Parts - Pièces - Piezas

Code-Código	Qty-Qté-Cant.	Code-Código	Qty-Qté-Cant.
42	3	30	1
43	1	31	1
70	1	32	1
71	1	33	1
80	1	40	1
		41	1

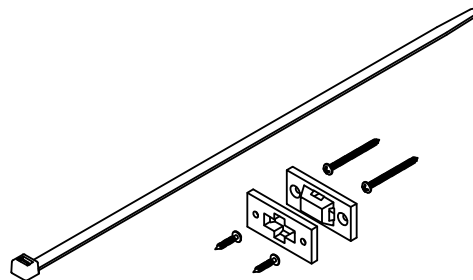


Hardware - Quincaillerie - Quincaillas

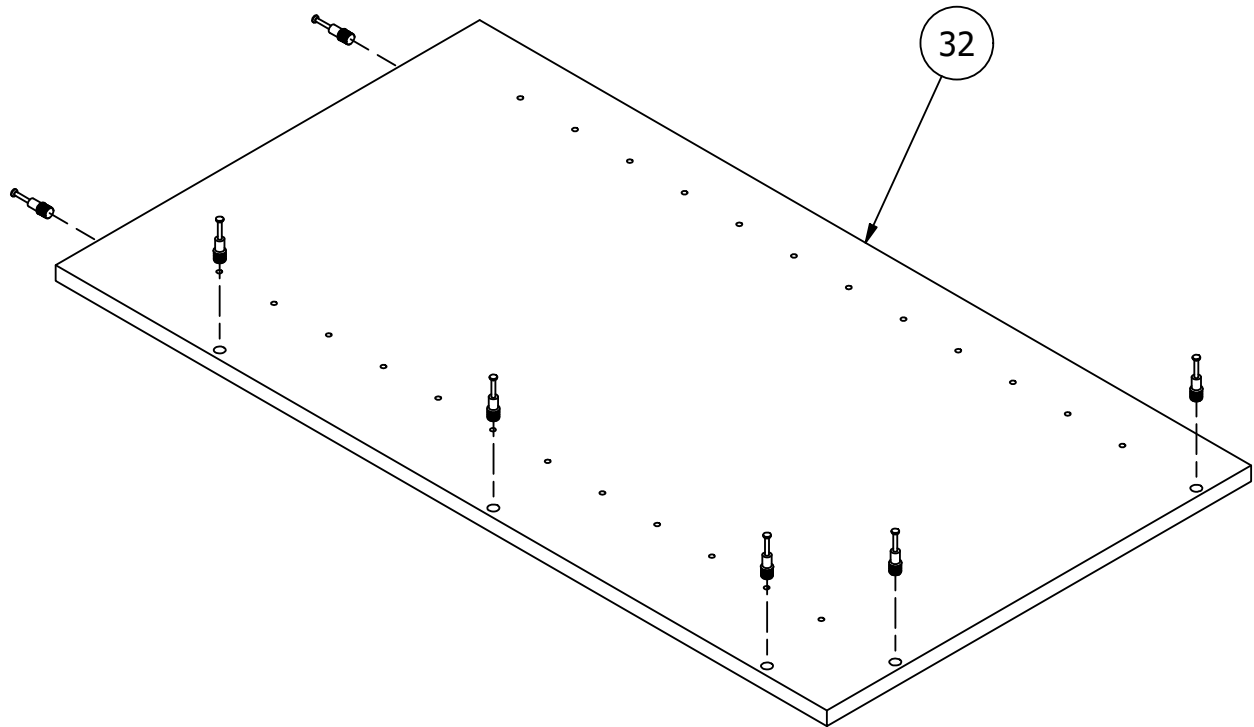
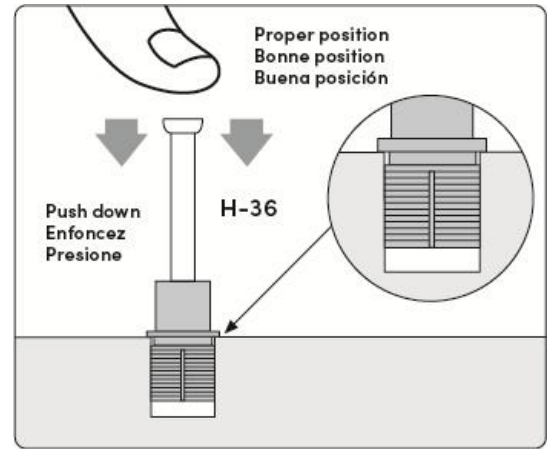
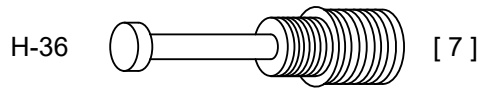
Not to Scale - No a escala - Pas à l'échelle.

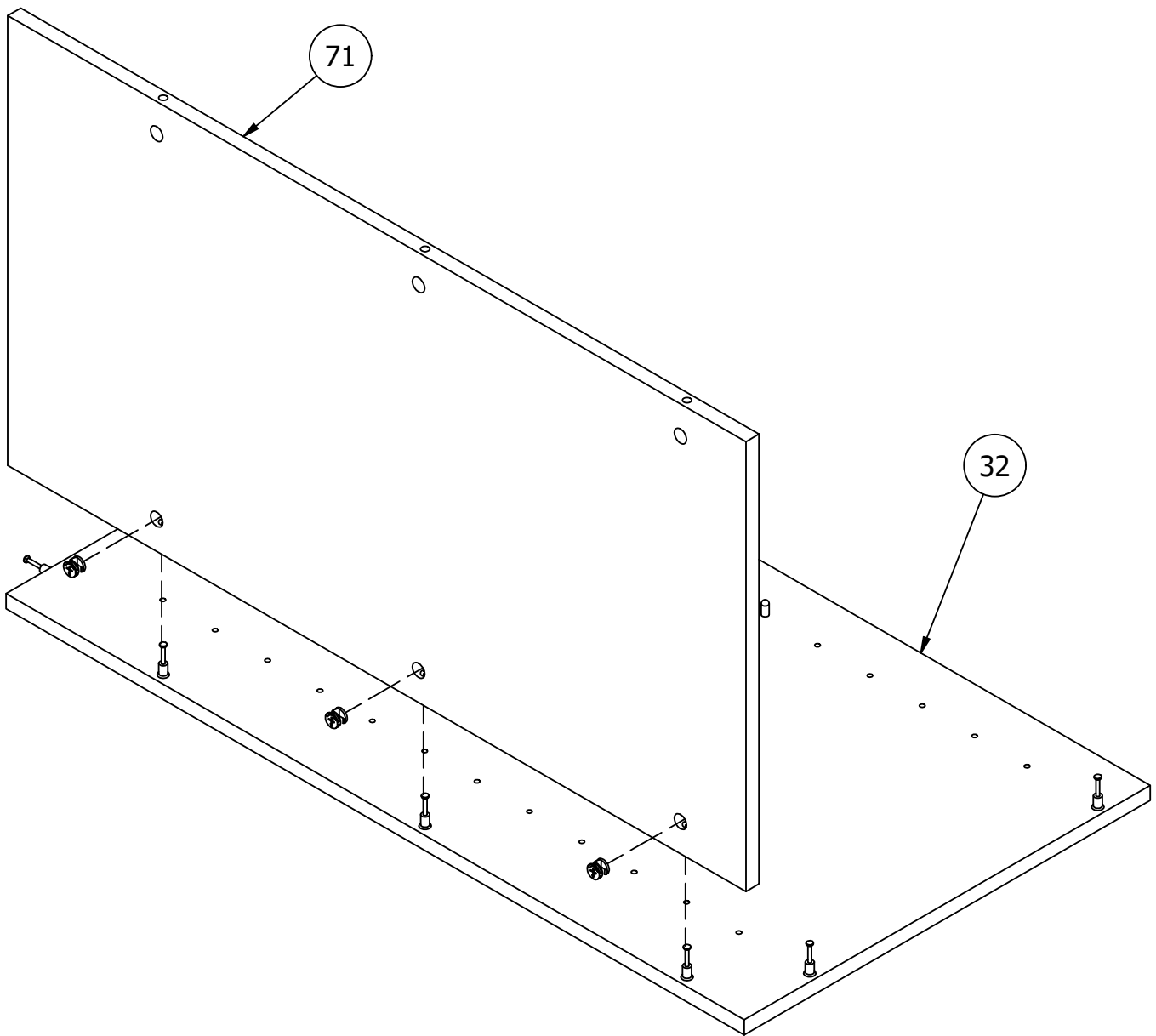
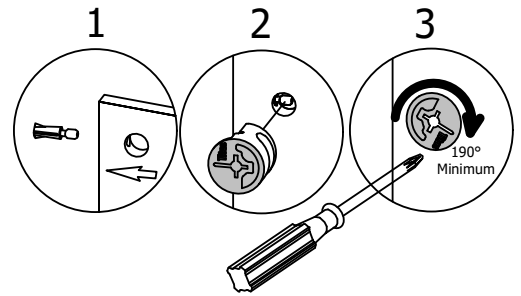
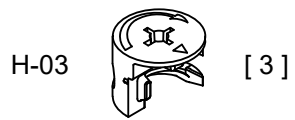


ST-760

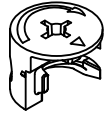


[1]

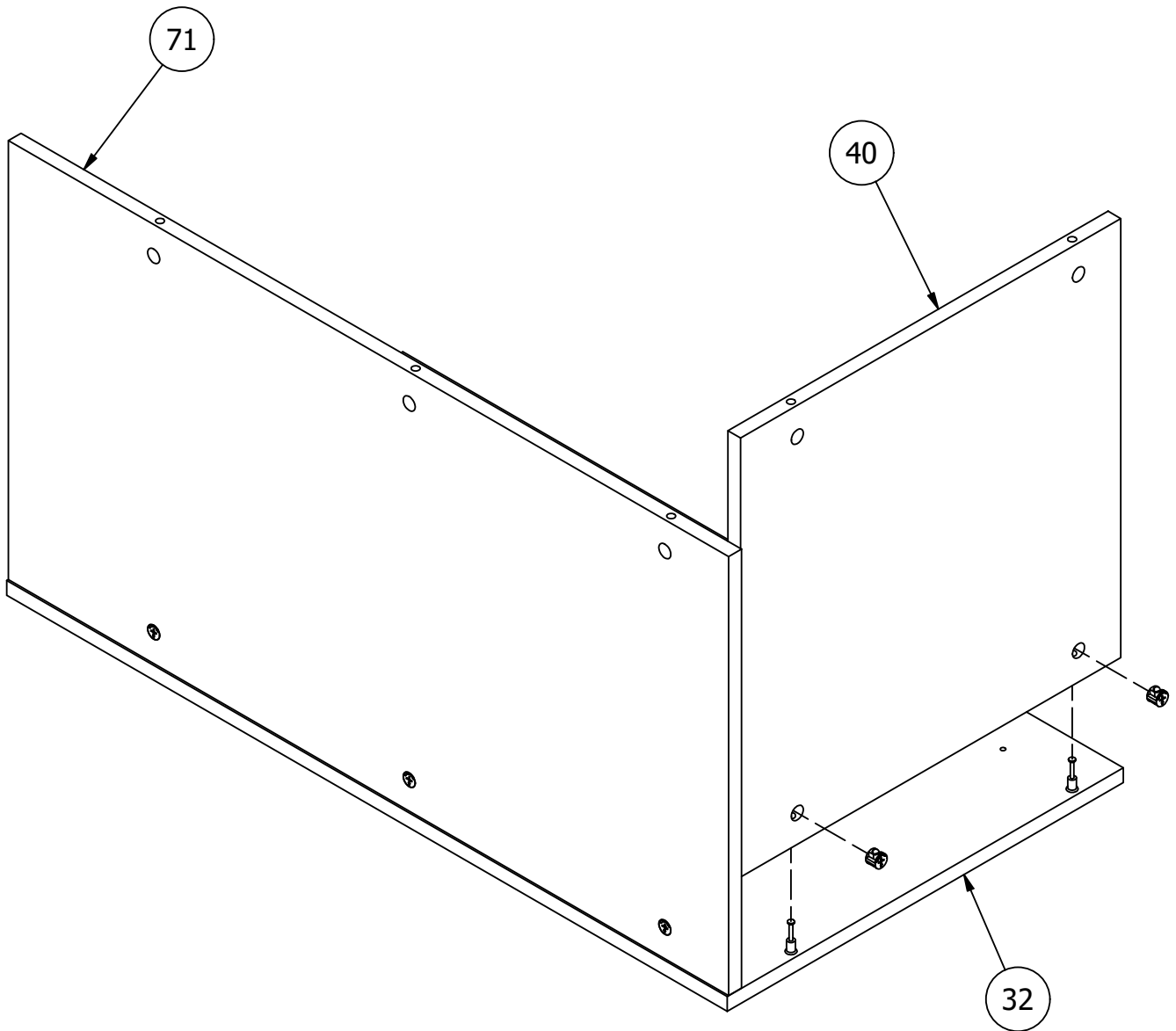
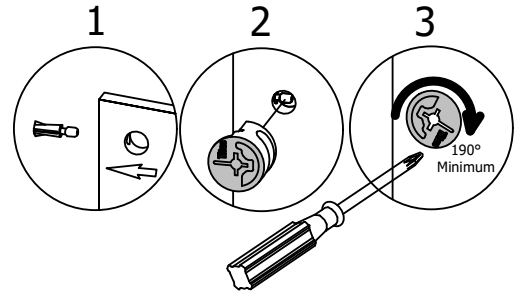


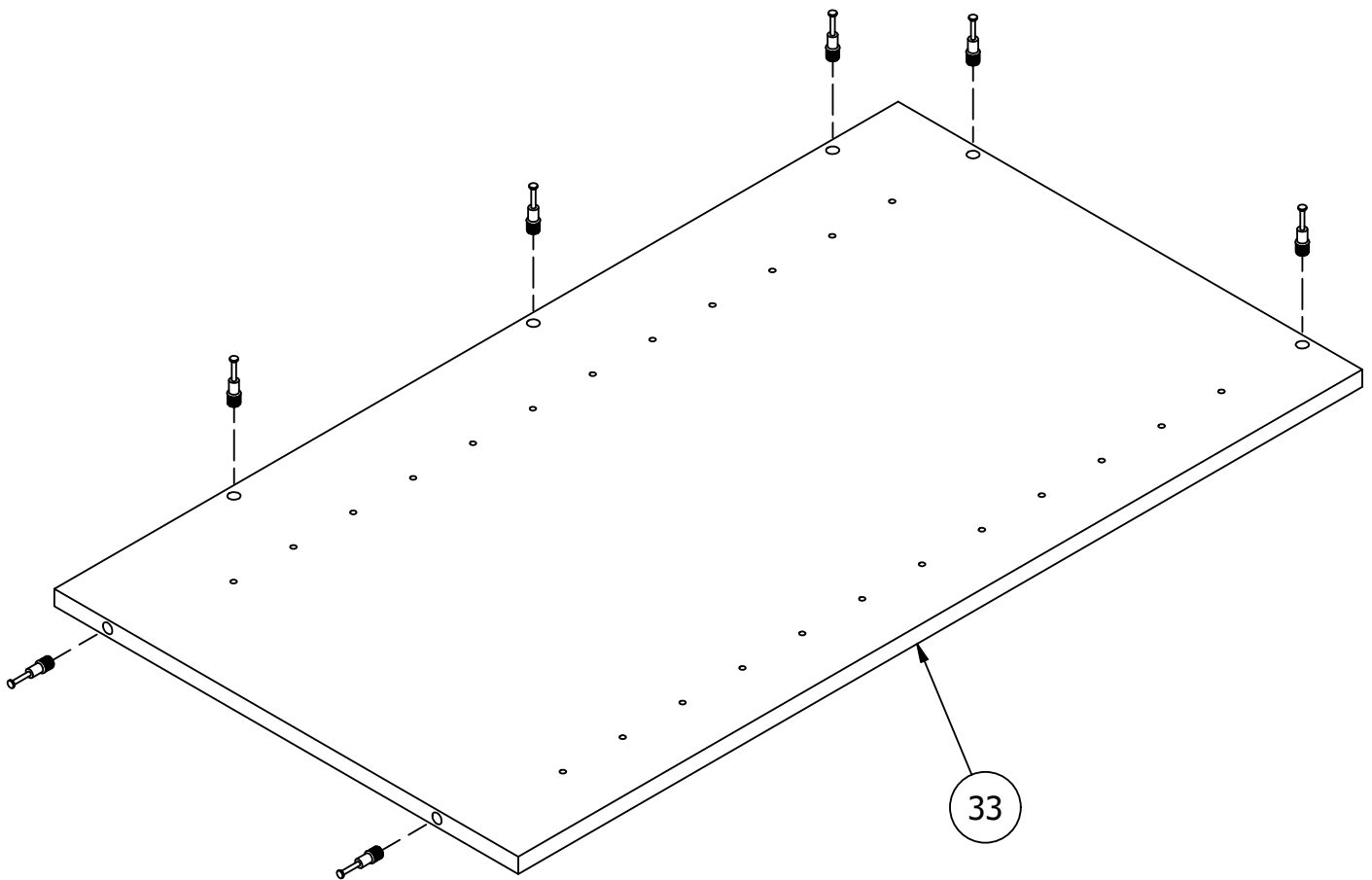
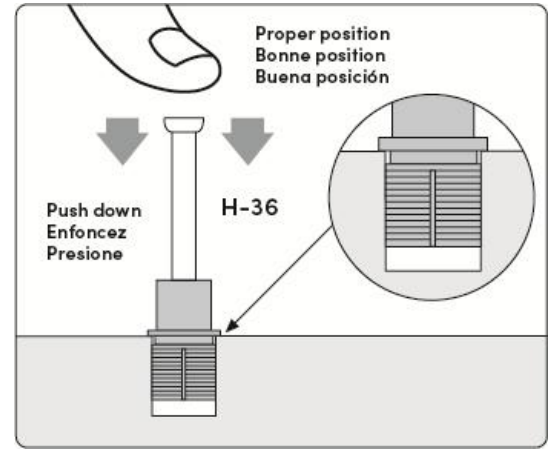
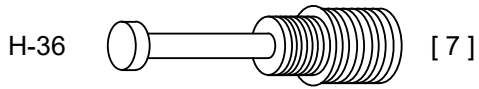


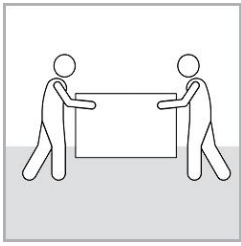
H-03



[2]

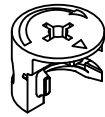




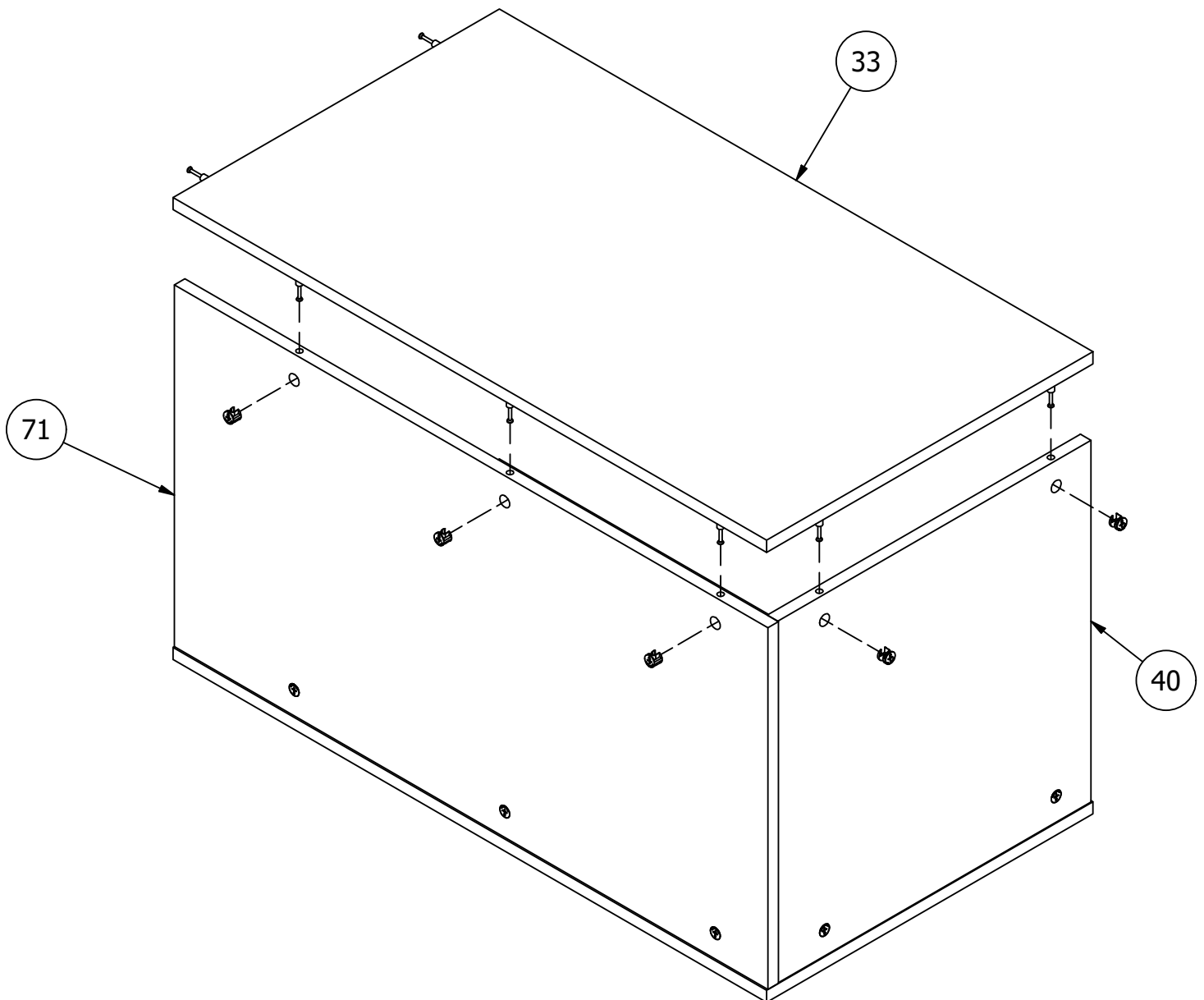
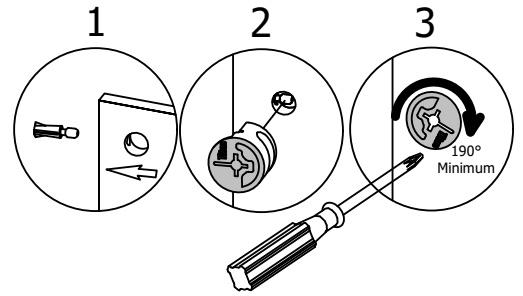


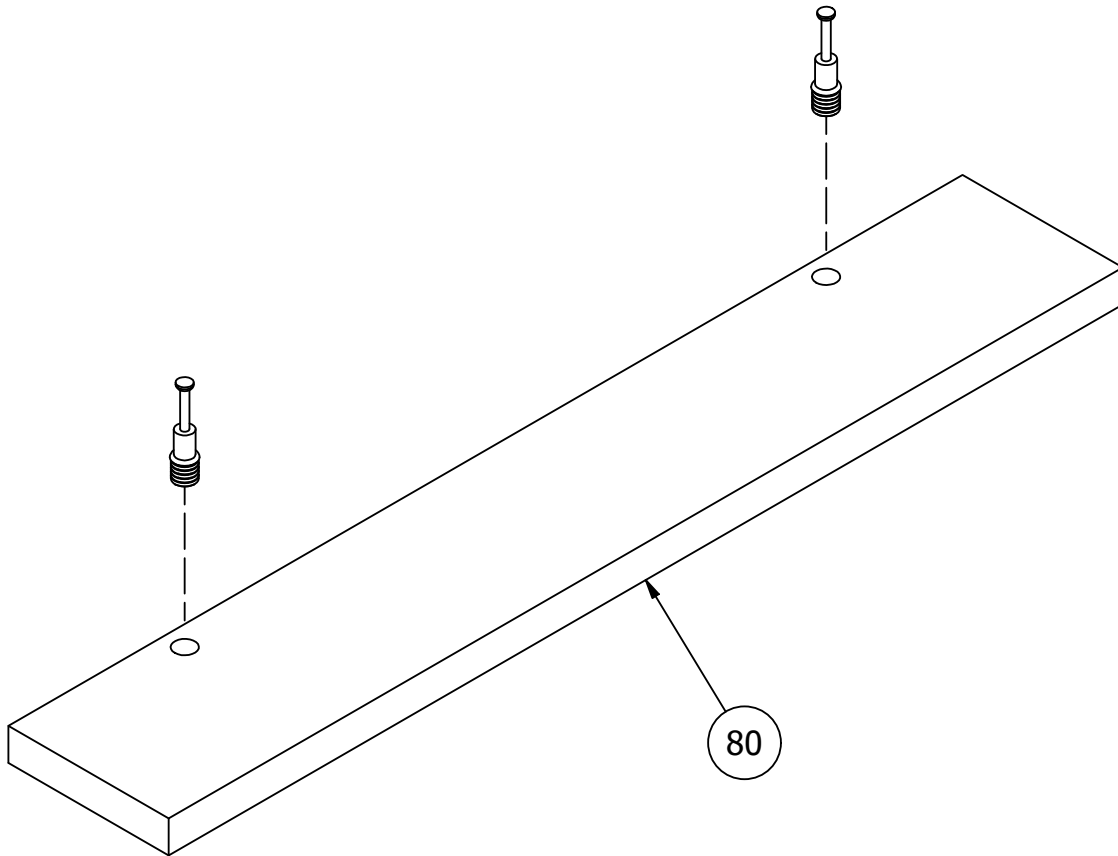
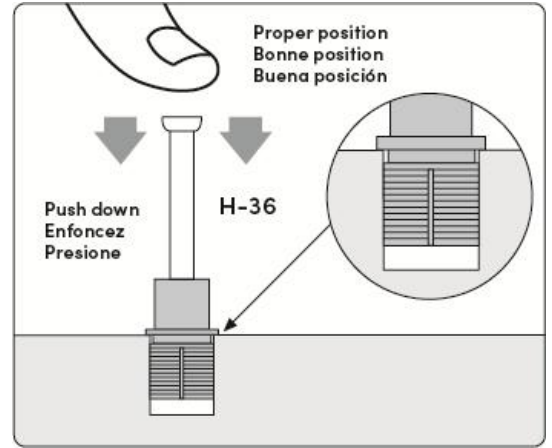
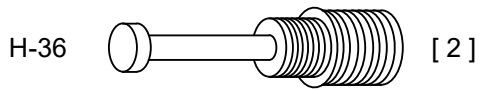
Team Lift
Esfuerzo de equipo
Effort d'équipe

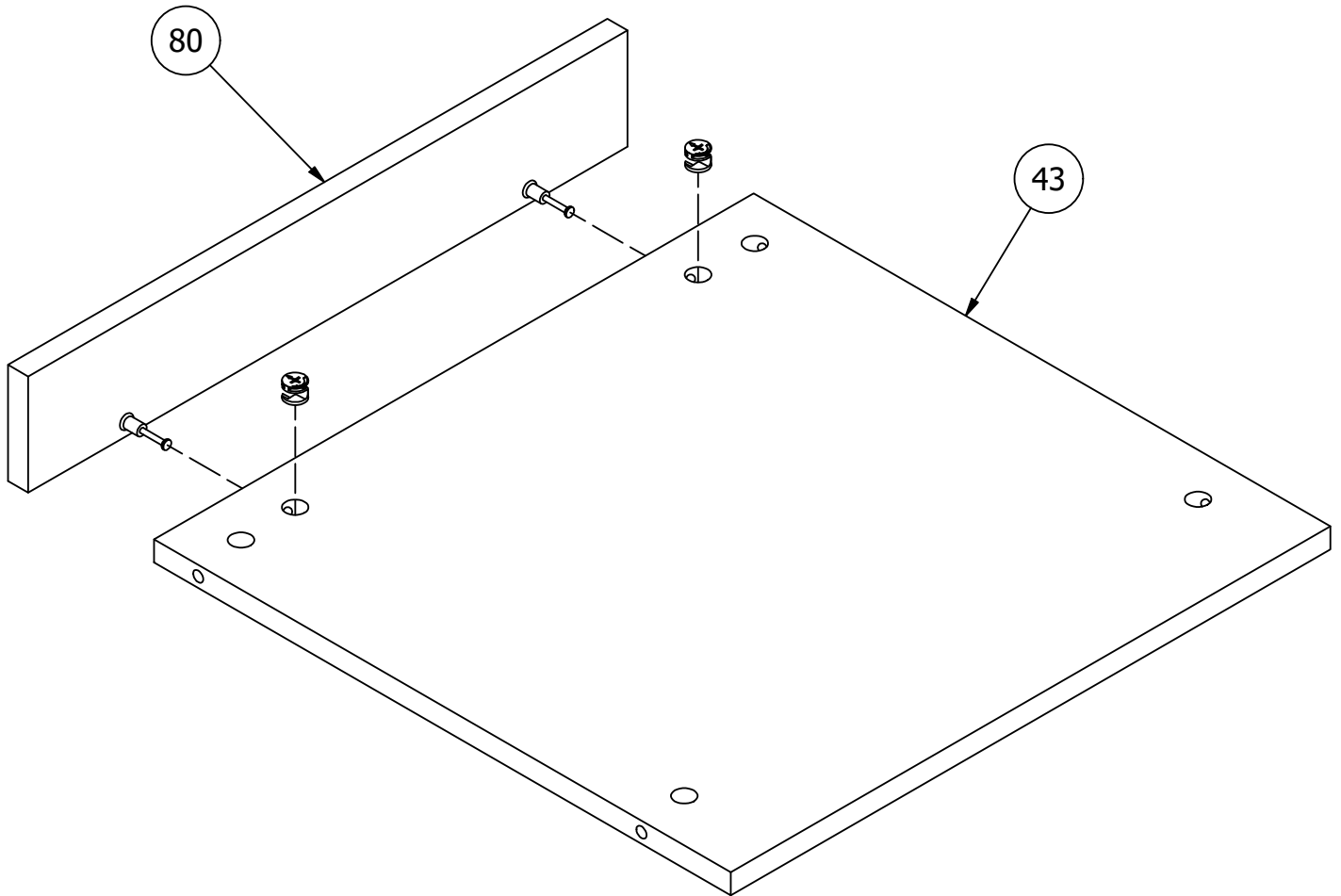
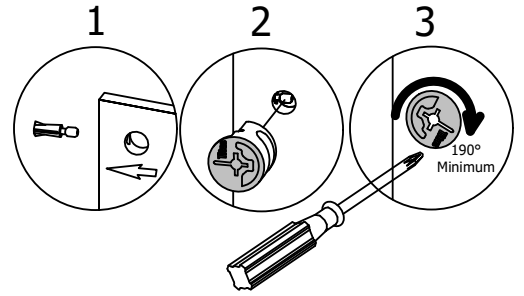
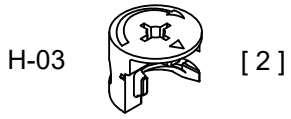
H-03



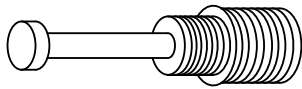
[5]



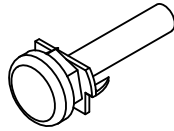




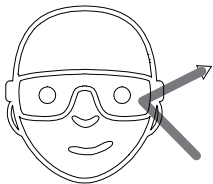
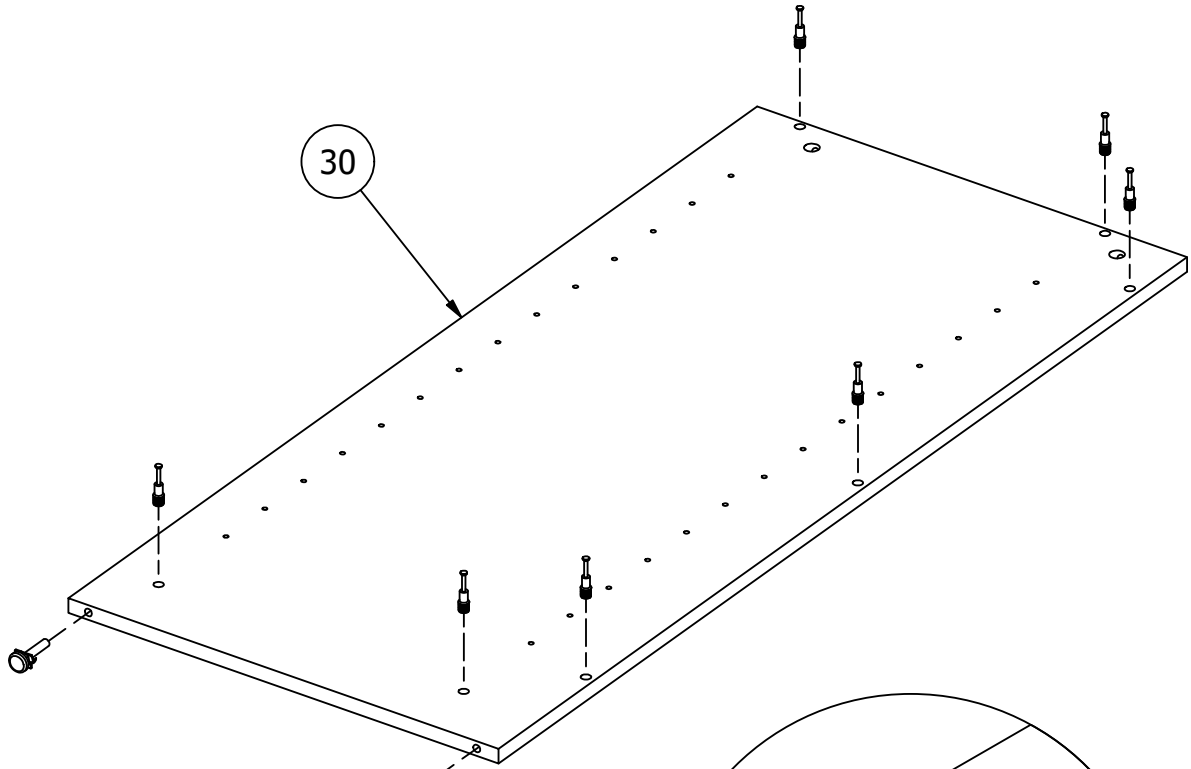
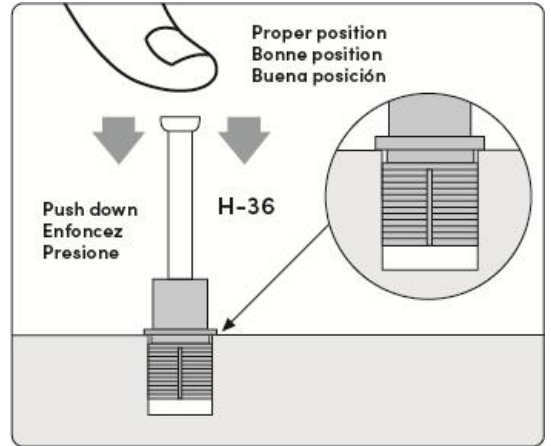
H-36



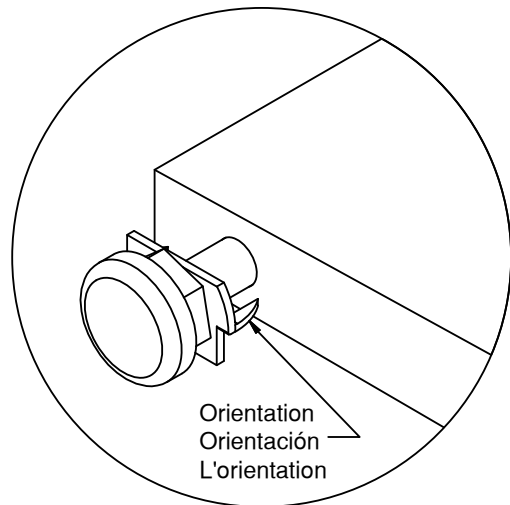
[7] H209601



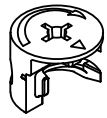
[2]



Safety glasses
Gafas de seguridad
Lunettes de protection

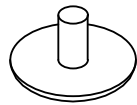


H-03

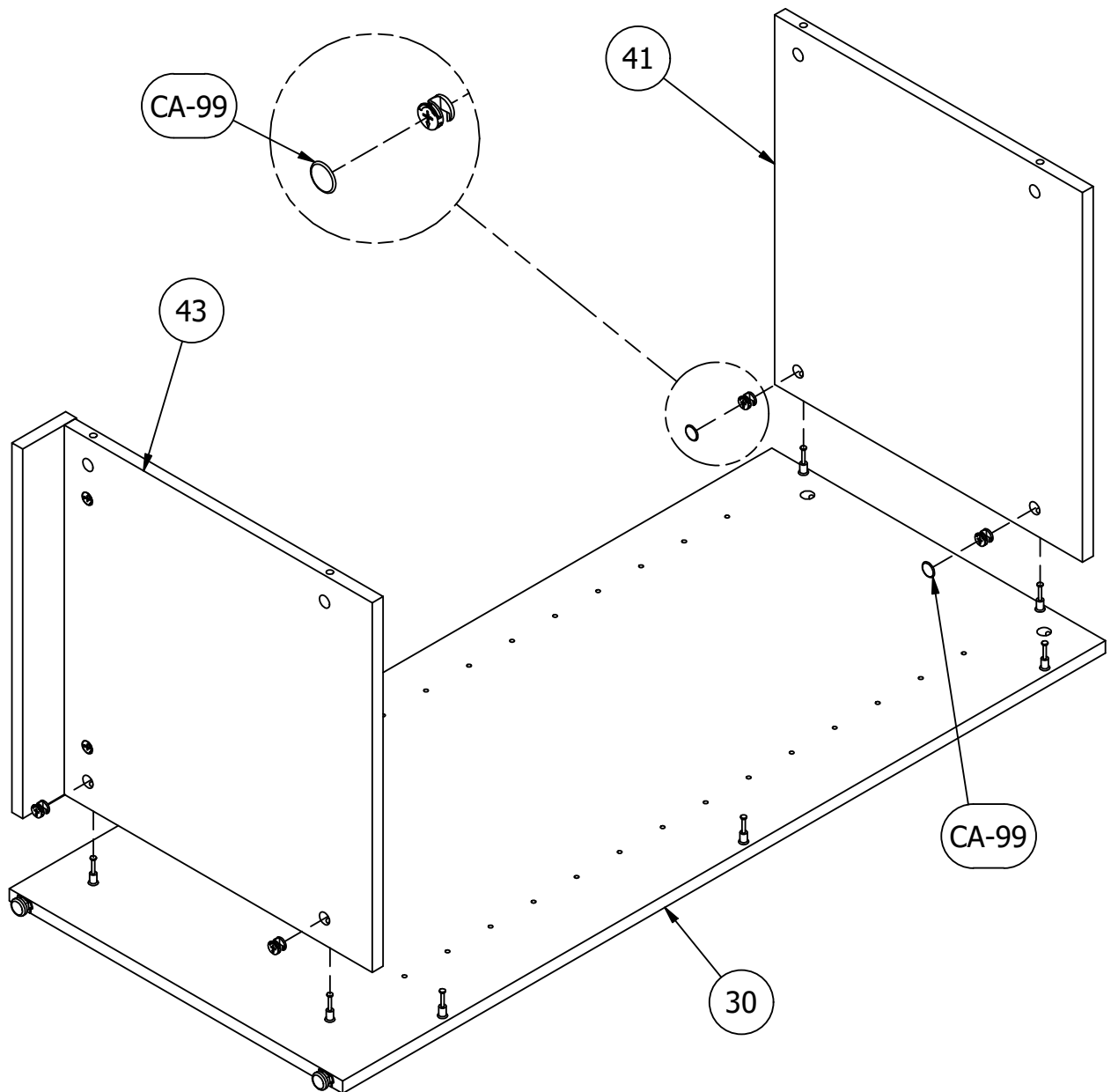
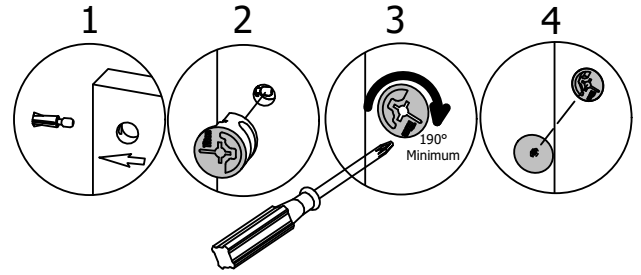


[4]

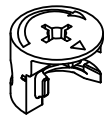
CA-99



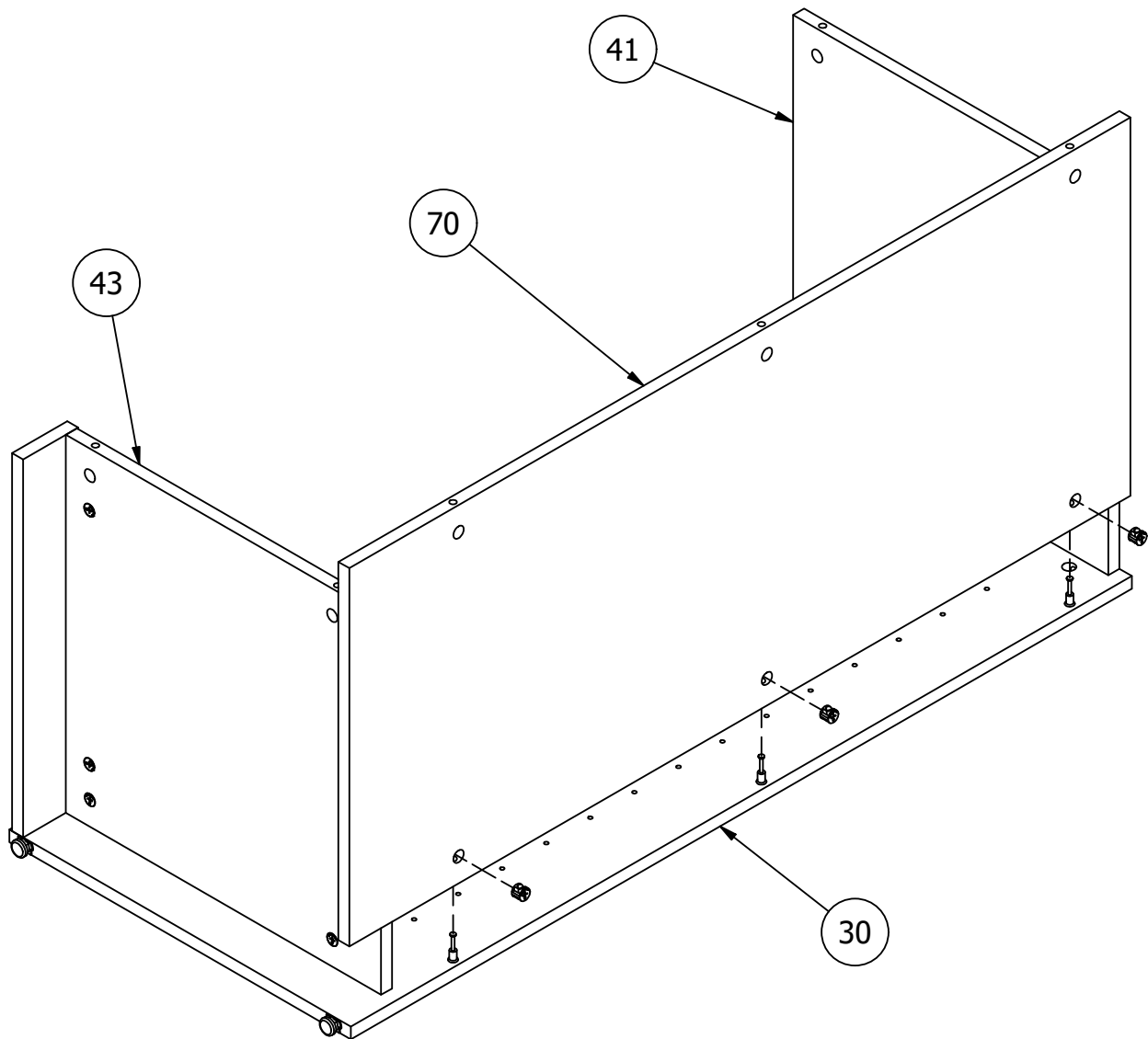
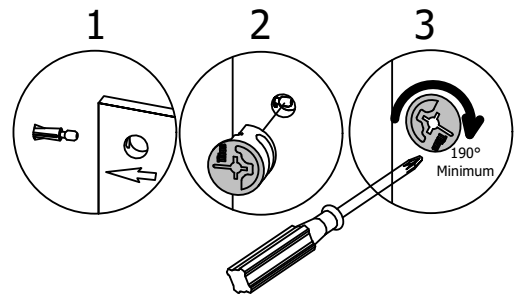
[2]



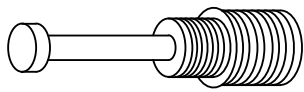
H-03



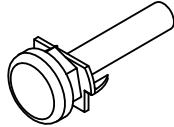
[3]



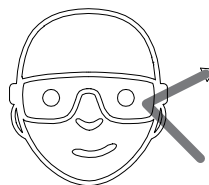
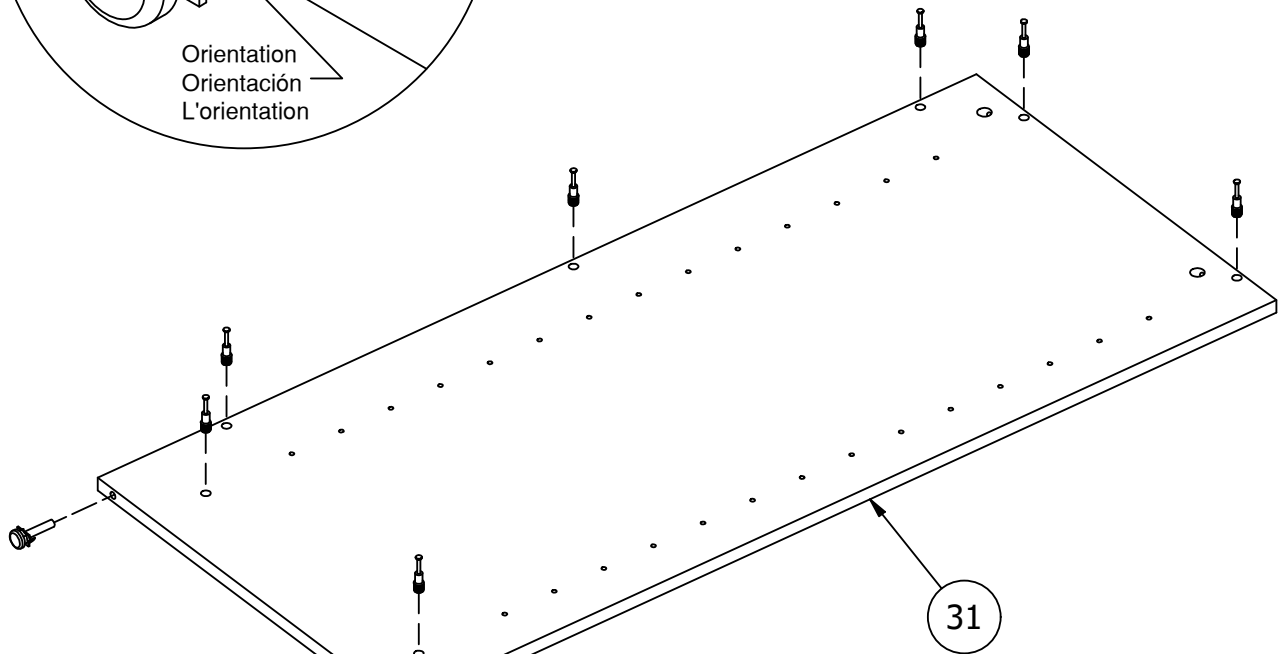
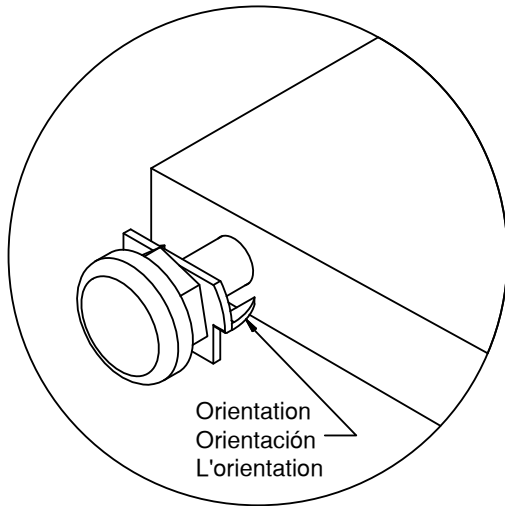
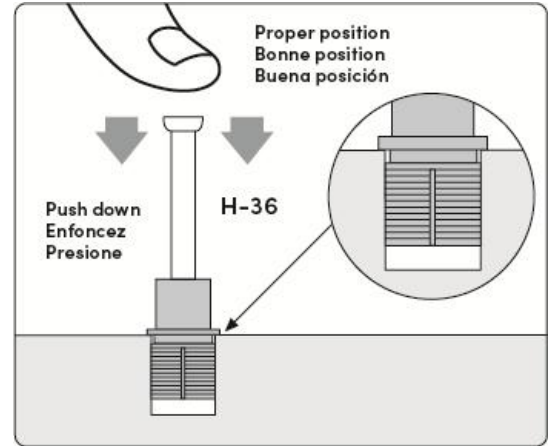
H-36



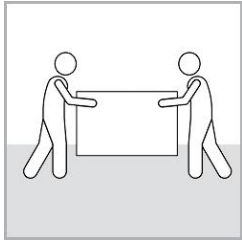
[7] H209601



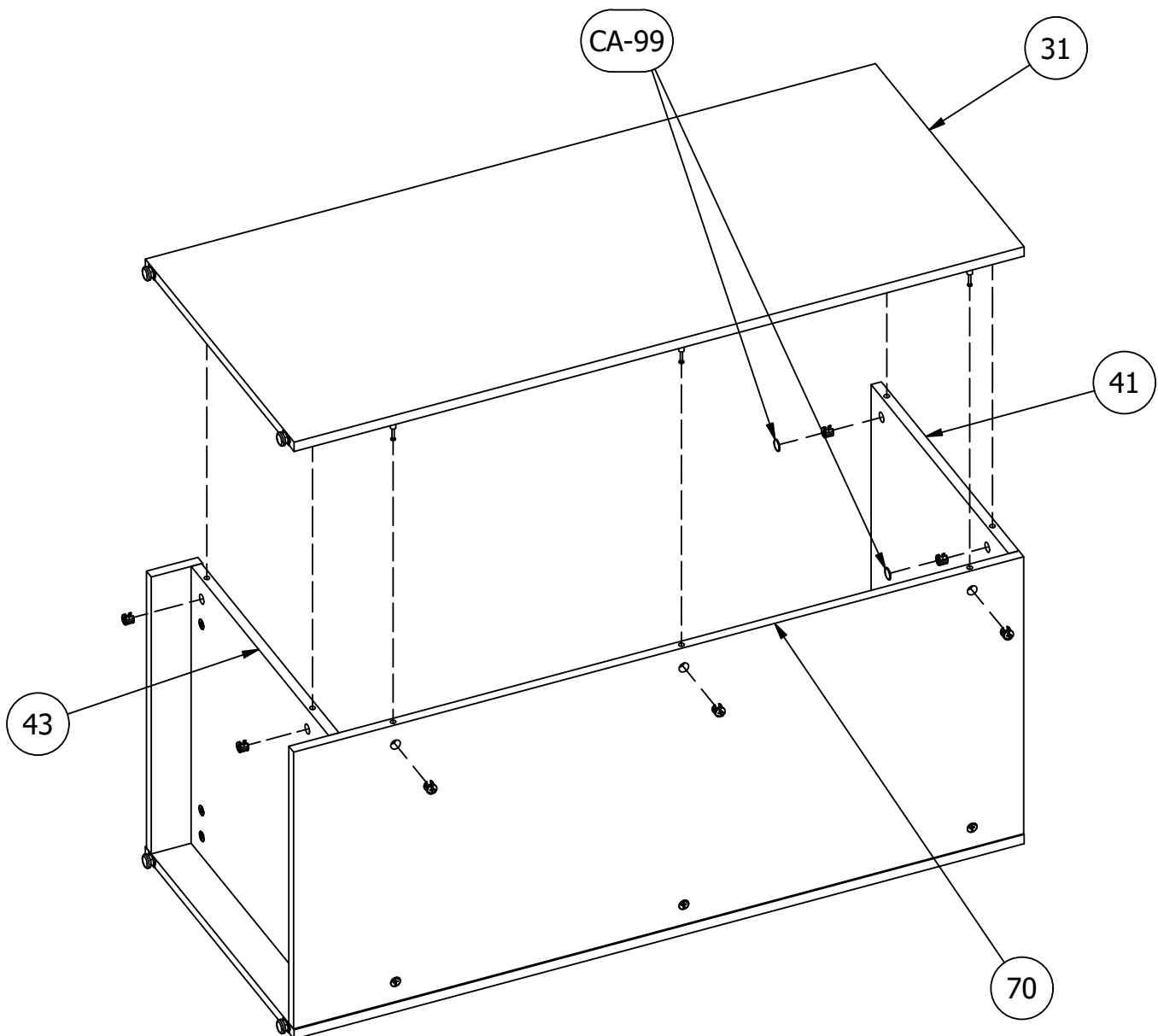
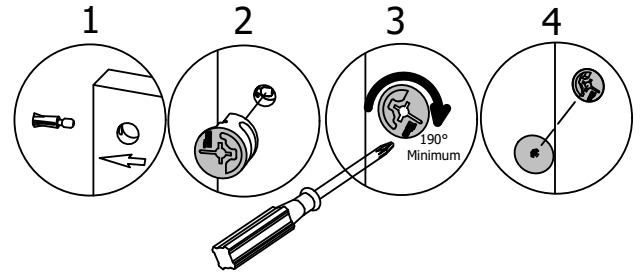
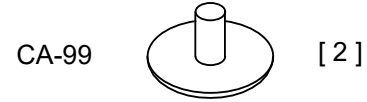
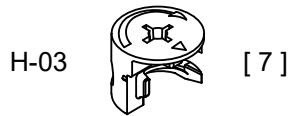
[2]

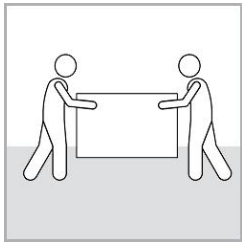


Safety glasses
Gafas de seguridad
Lunettes de protection

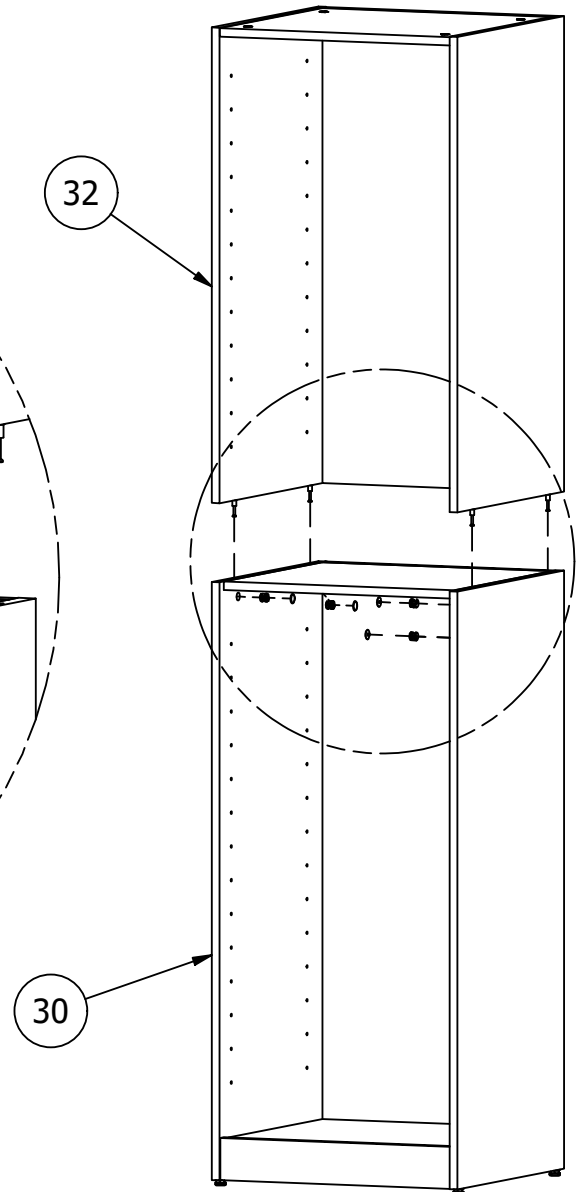
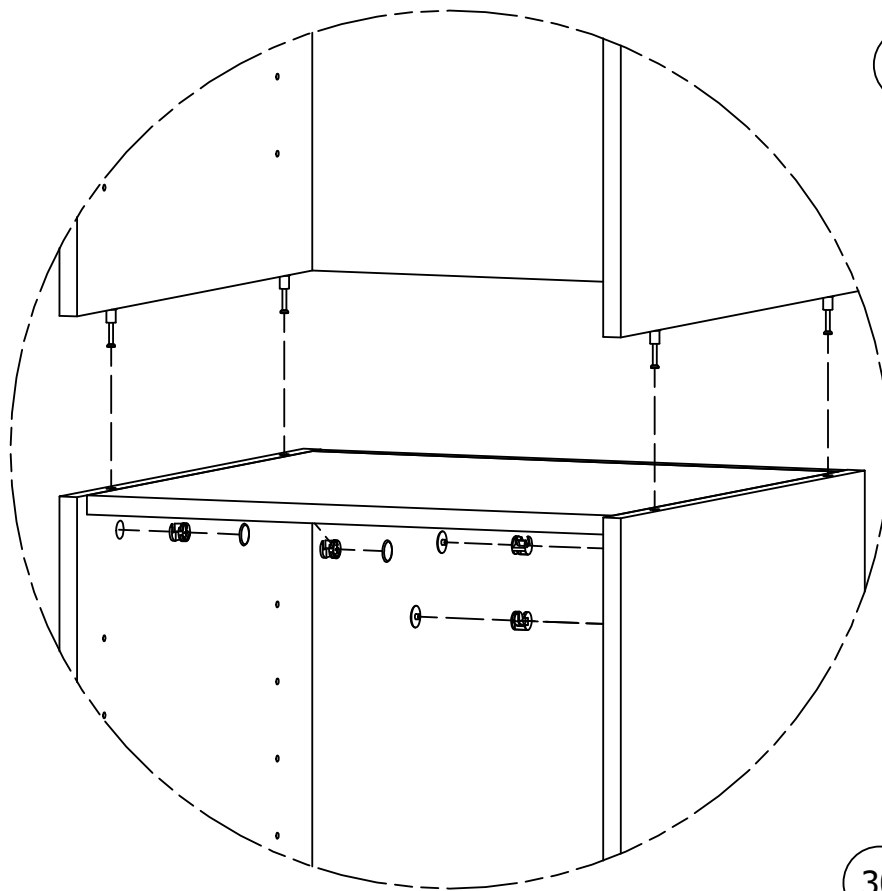
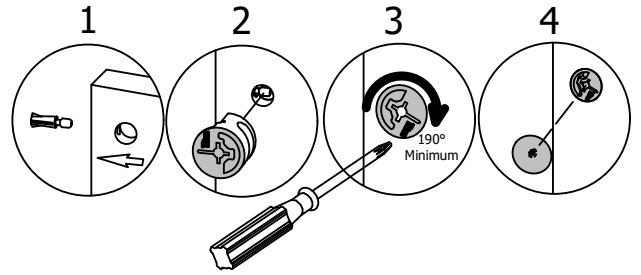
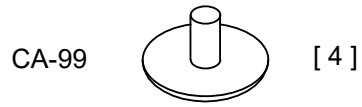
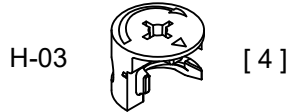


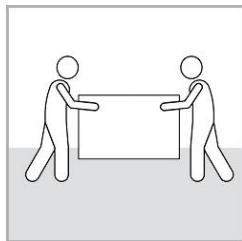
Team Lift
Esfuerzo de equipo
Effort d'équipe





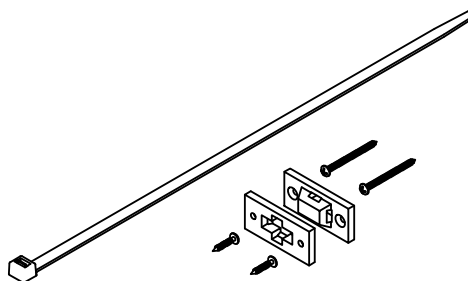
Team Lift
Esfuerzo de equipo
Effort d'équipe



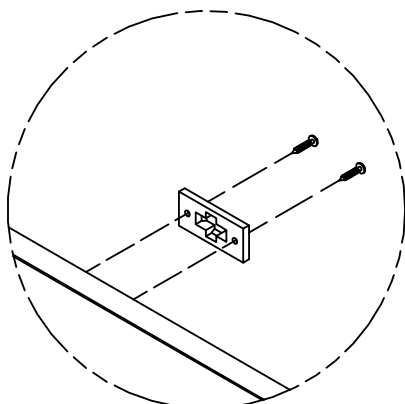


Team Lift
Esfuerzo de equipo
Effort d'équipe

ST-760



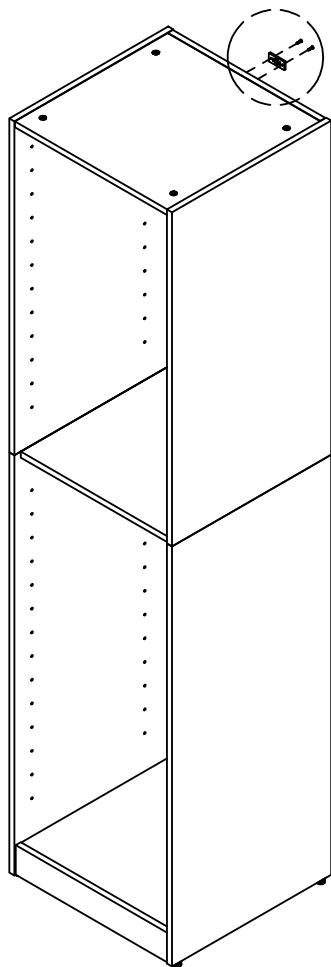
[1]



Please properly install the safety bracket following the directions provided on its hardware bag.

Veuillez bien installer les ferronneries d'attaches selon les instructions fournies sur le sac de cette quincaillerie.

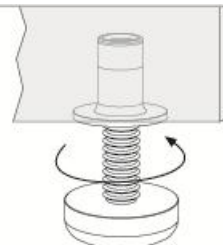
Instale los dispositivos de anclaje de acuerdo con las instrucciones de la bolsa de tornillería correspondiente.

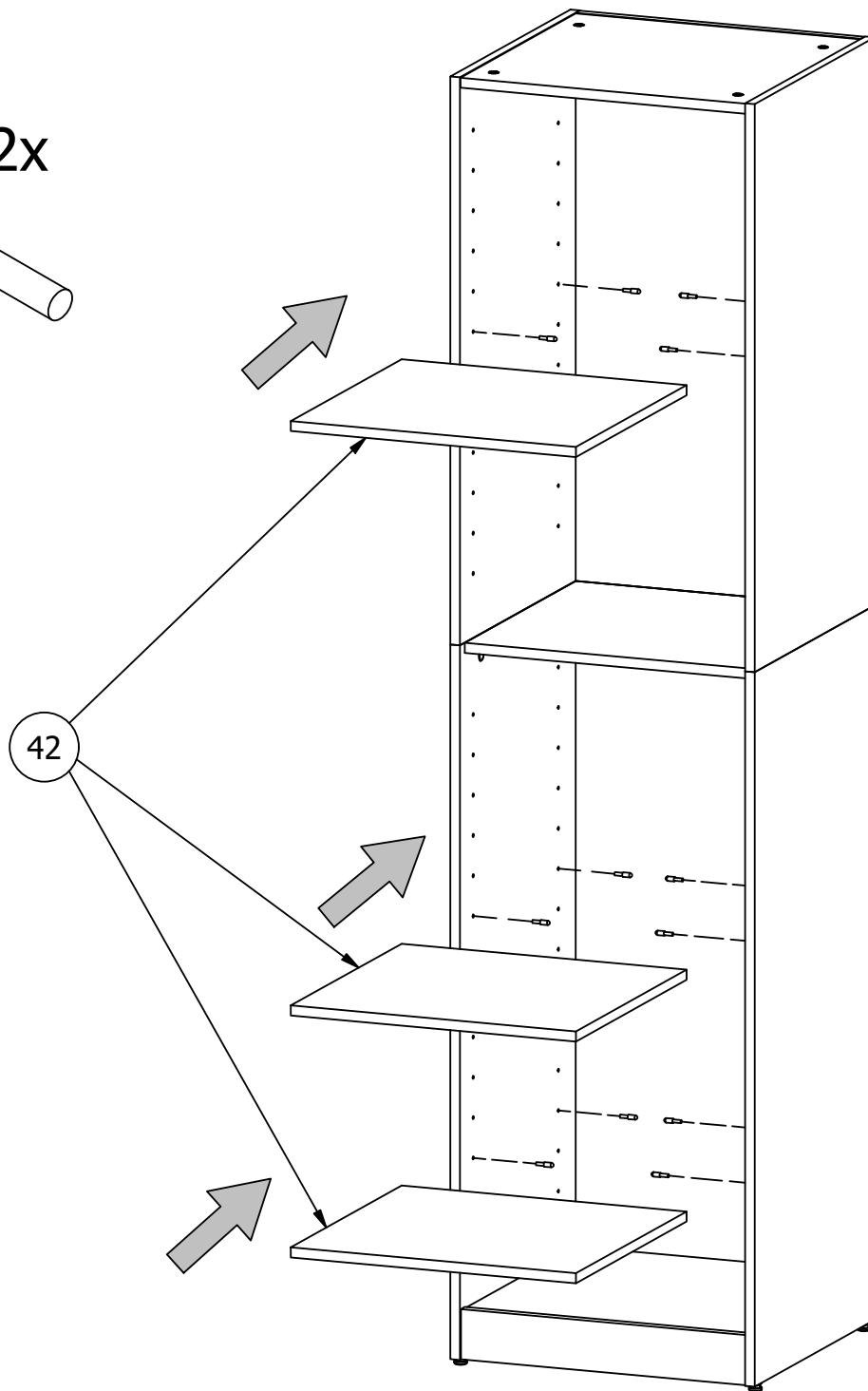
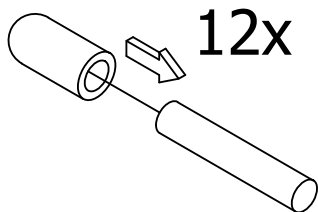
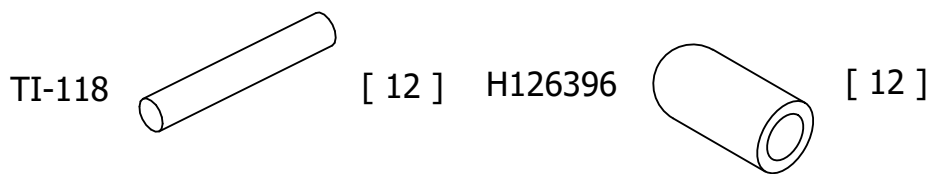


Properly level your furniture using the adjustable legs.

Bien niveler votre meuble en utilisant les patins niveleurs.

Nivele su mueble adecuadamente utilizando las patas ajustables.





Loading - Chargement - Carga

Gently clean surfaces with a damp sponge eraser.
Limpie suavemente las superficies con una esponja húmeda.
Nettoyer délicatement les surfaces à l'aide d'une éponge humide.

Maximum Weight: 0 Lbs.
Peso Máximo: 0 Libras
Poids Maximum: 0 kilogramme

Maximum Weight: 50 Lbs.
Peso Máximo: 50 Libras
Poids Maximum: 22.6 kilogramme

