





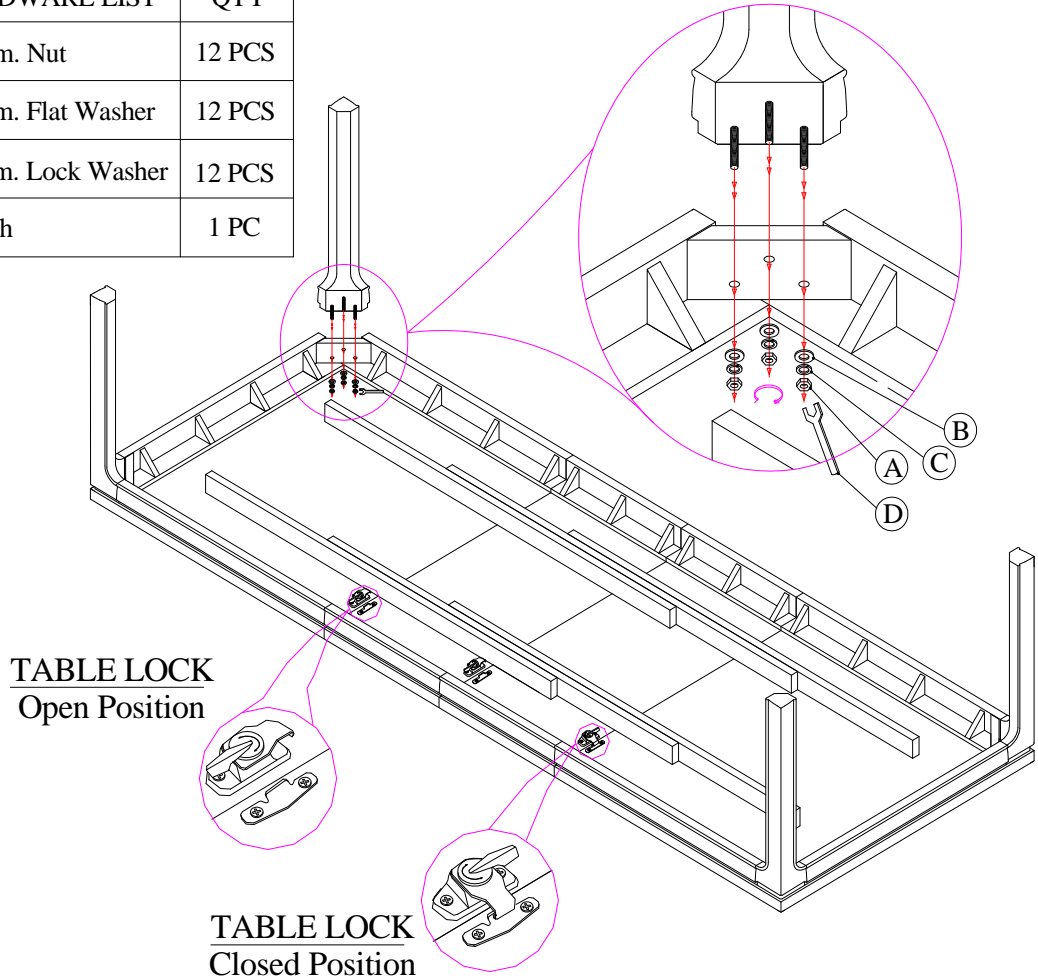
LEXINGTON®

H O M E B R A N D S

ASSEMBLY INSTRUCTIONS

725-877 Concorde Rectangular Dining Table

PART	HARDWARE LIST	QTY
A	 $\frac{3}{8}$ " Diam. Nut	12 PCS
B	 $\frac{3}{8}$ " Diam. Flat Washer	12 PCS
C	 $\frac{3}{8}$ " Diam. Lock Washer	12 PCS
D	 Wrench	1 PC



To Assemble Table:

1. Place table top upside-down on flat, clean, non-marring surface.
2. Insert threaded rods protruding from leg through holes in corner block. Use wrench (D) to attach leg to Top with (3) of each: flat washers (B), lock washers (C), and nuts (A). Repeat this step for other (3) legs.
3. Fully tighten all nuts on threaded rods.
4. Return assembled table to its upright position and place in desired location.

To Attach Leaf:

1. Open table locks on underside of table, located between half-tops on each side.
2. Pull on one end of table to separate half-tops. Open table enough to insert leaf.
3. Place table leaf between half-tops so that pins on leaves align with holes on half-tops.
4. Push table on each end until fully closed.
5. Close table locks on underside of table between each leaf and half-top.

For additional consumer assistance please contact your Lexington dealer or call our Consumer Services Department at 1-336-474-5300, Monday-Friday, 8-5 Eastern