

# ASSEMBLY INSTRUCTIONS

## TOOLS REQUIRED:

Allen wrench (Provided, part # E & I)  
Phillips Screwdriver (not provided)

## BEFORE YOU START:

1. Check the parts against the parts list to make sure all items are present.
2. Assemble your furniture on a soft, flat surface to avoid scratching the finish.
3. **CAUTION:** Do not over tighten screws, nuts or bolts during assembly.
4. Your furniture may require occasional tightening.

## INSTRUCTIONS:

1. Attach the wooden pegs (K) to the support rail as shown Fig 1.

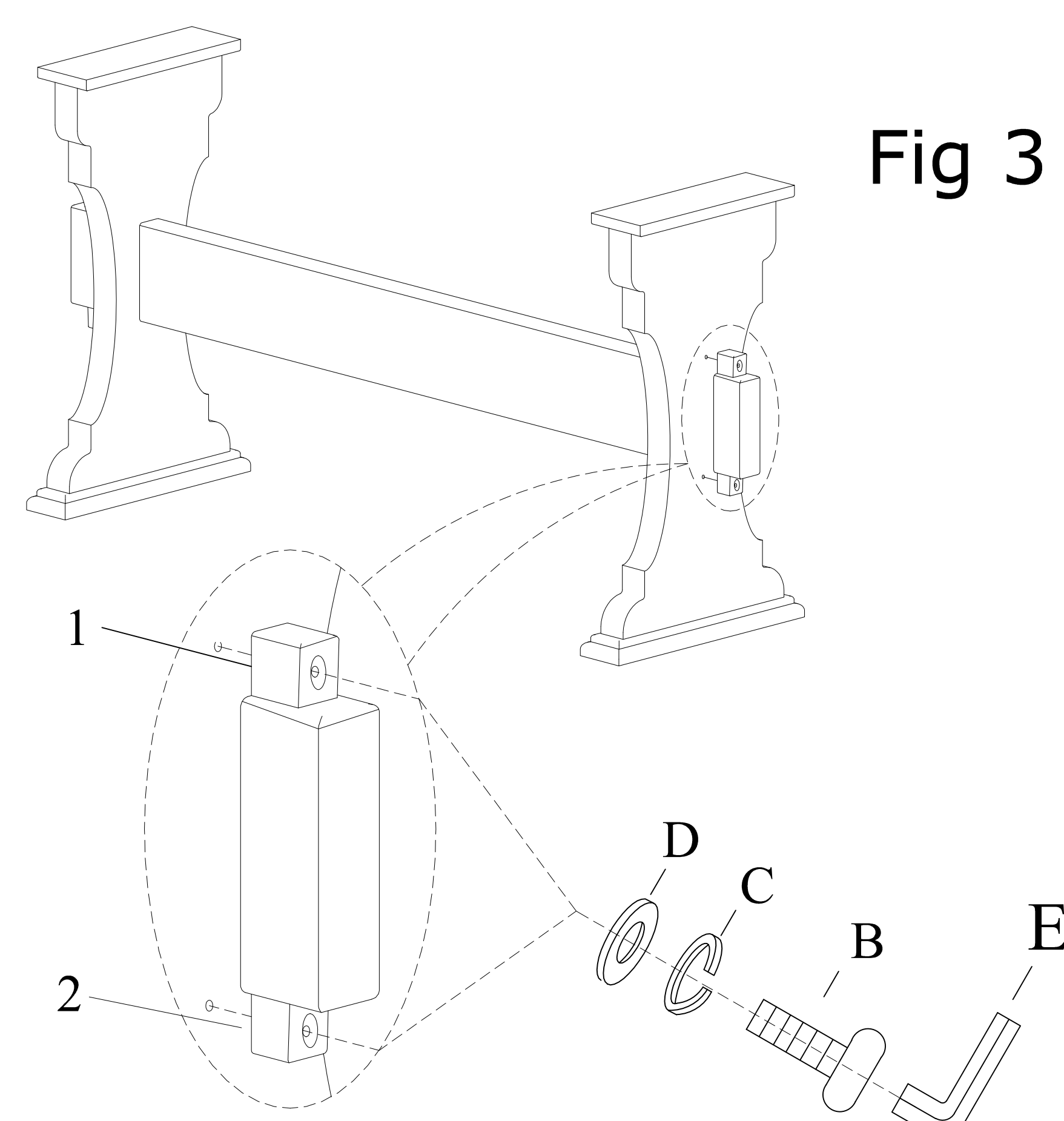
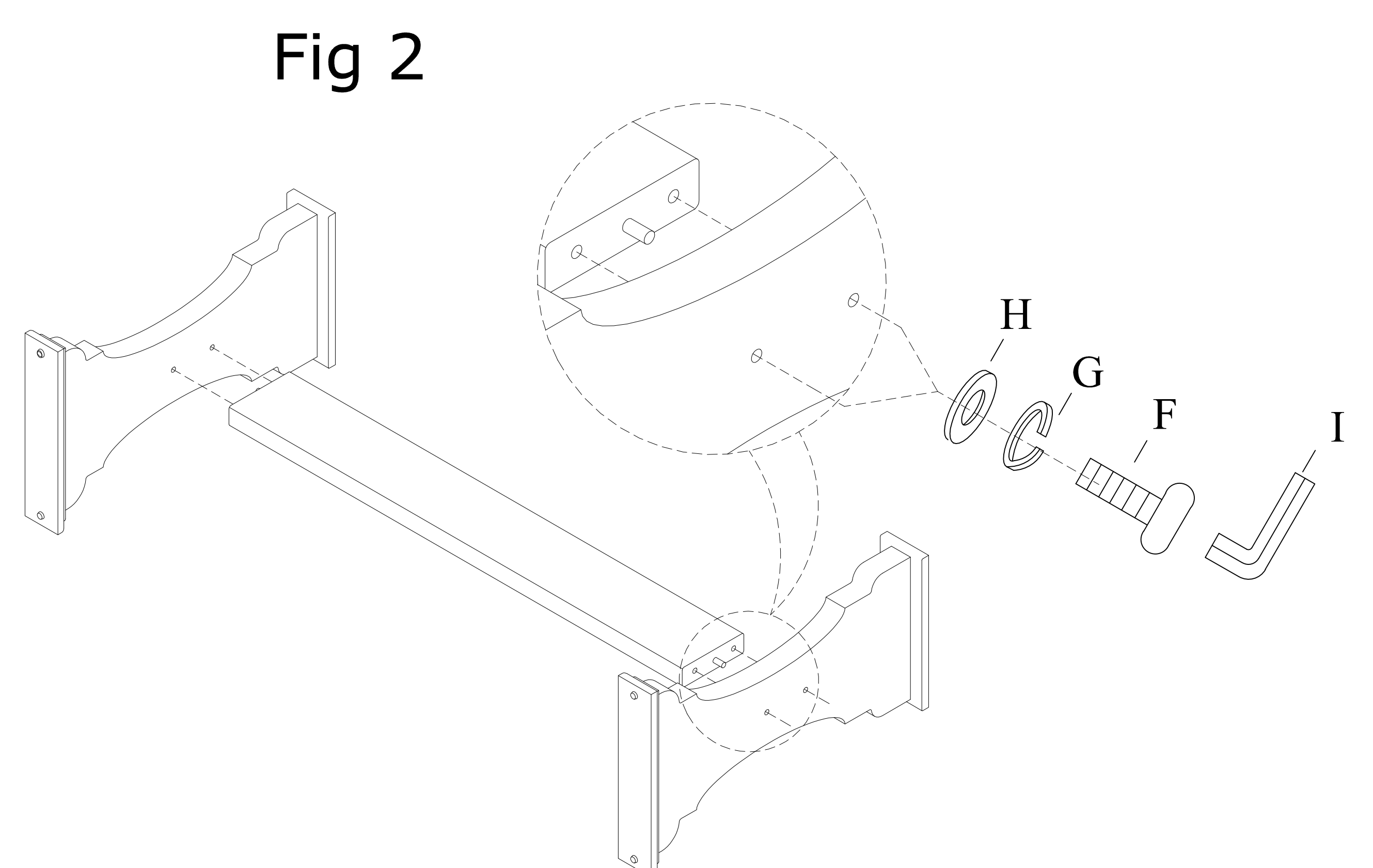
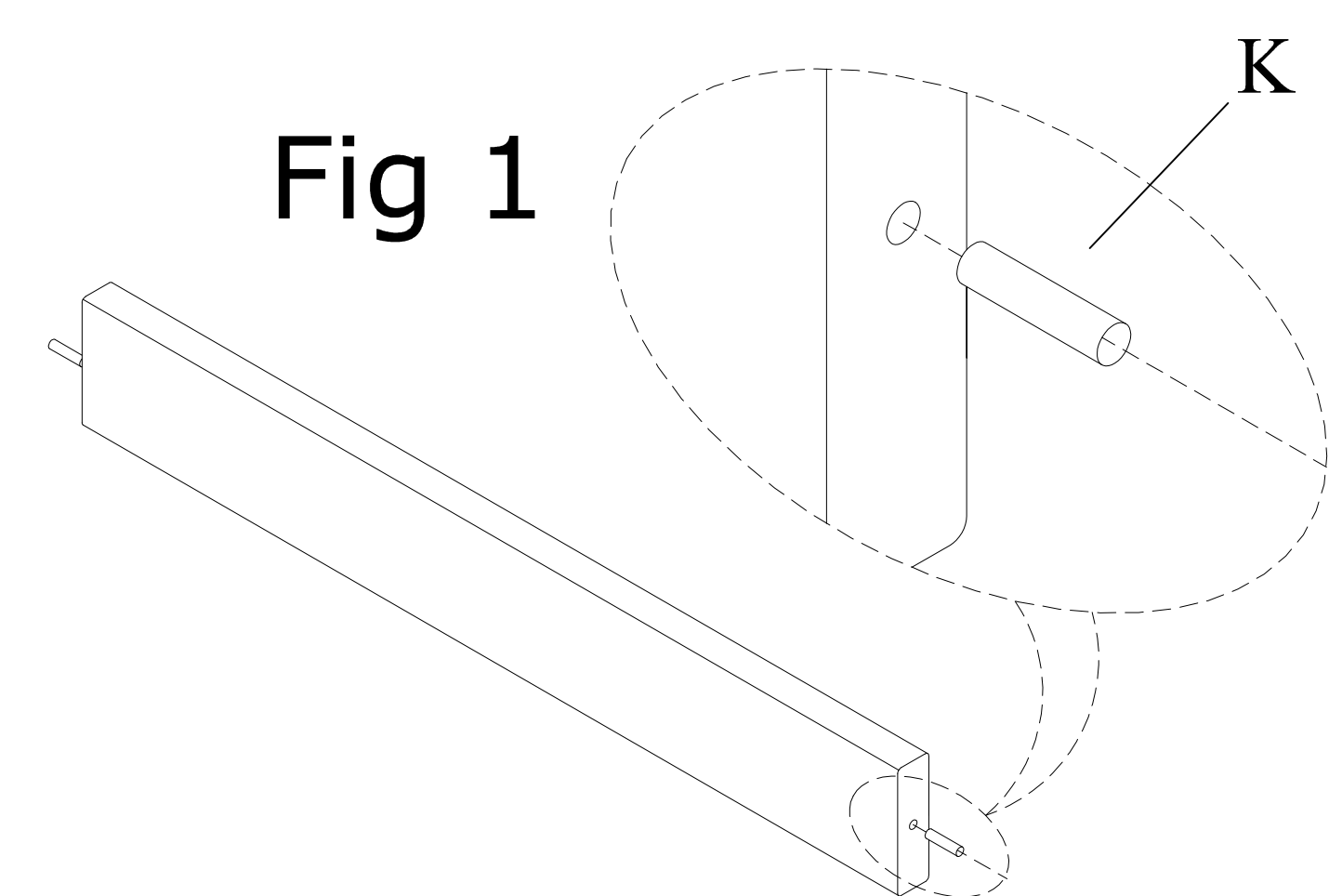
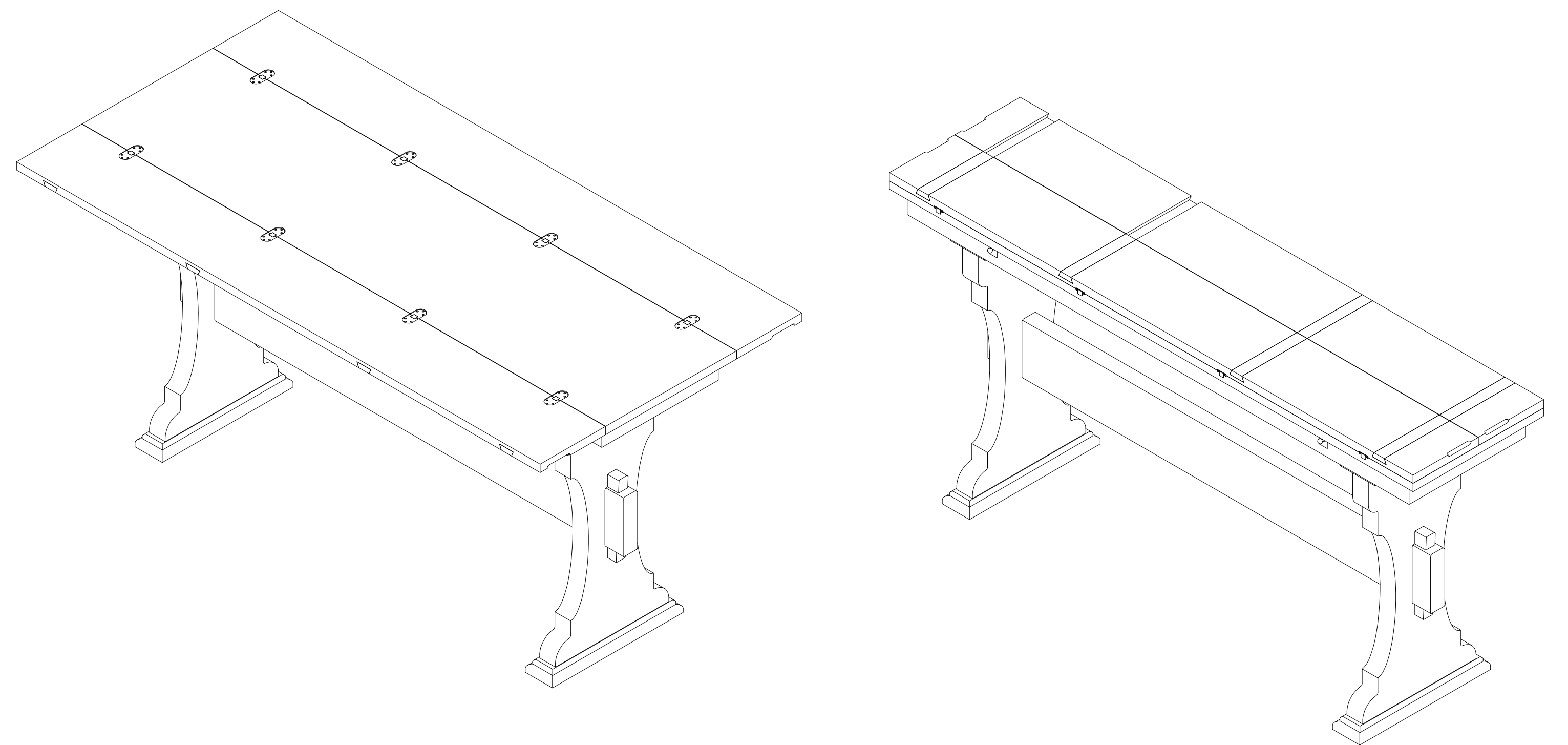
2. Attach the leg frame to the support rail using bolts (F), lock washers (G) and flat washers (H) and tighten with the Allen wrench (I) as shown Fig 2.

3. Attach the decorative bar to the base using bolts (B), lock washers (C) and flat washers (D) and tighten with the Allen wrench (E) as shown Fig 3.

4. Fix the wooden buttons (L) to the base as shown Fig 4.

5. Attach the leg base to the table top using bolts (A), lock washers (C) and flat washers (D) and tighten with the Allen wrench (E) as shown Fig 5.

6. Extend the using area by opening the table top as shown Fig 6.



Thank you for purchasing furniture!

# ASSEMBLY INSTRUCTIONS

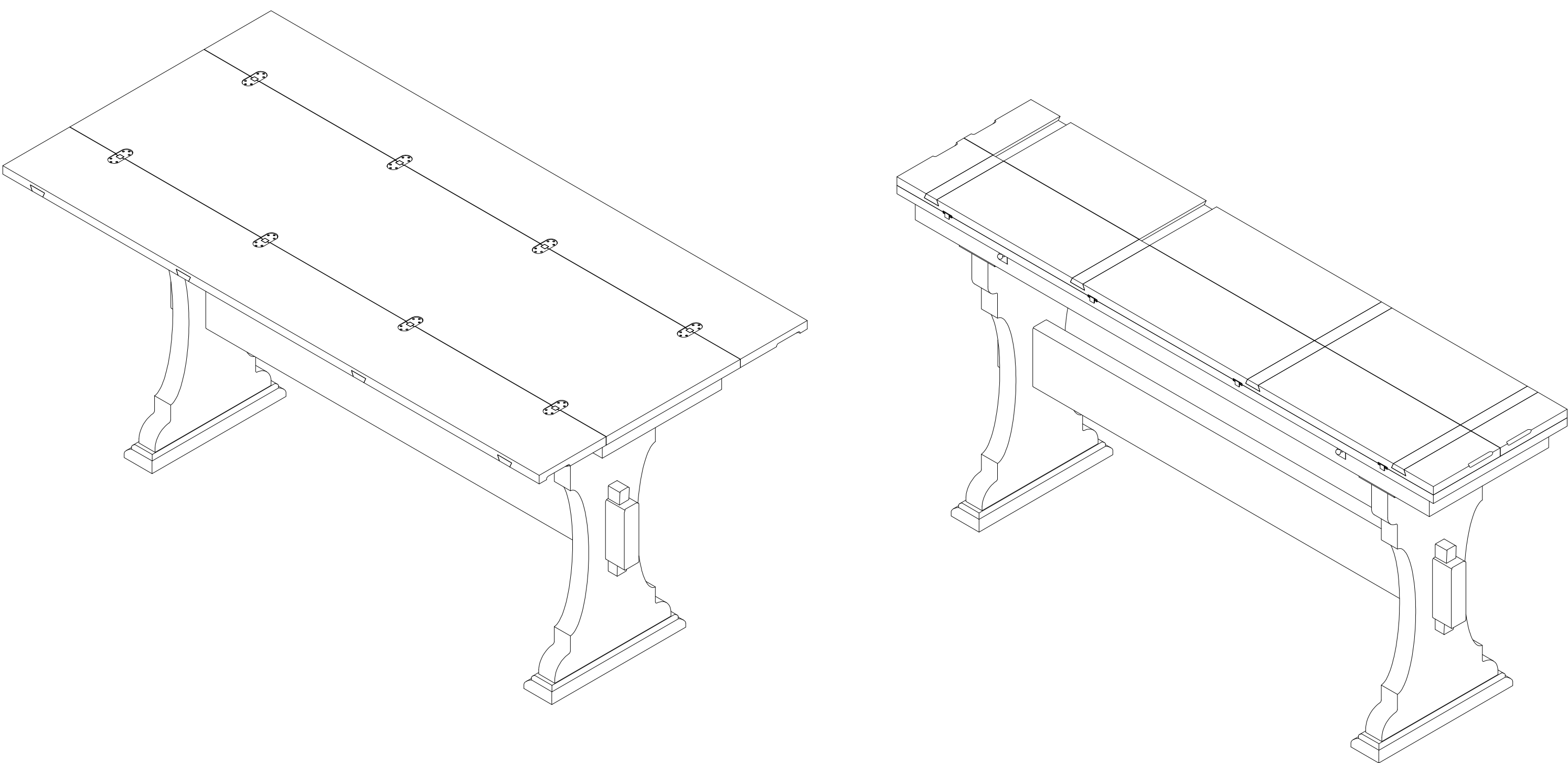


Fig 4

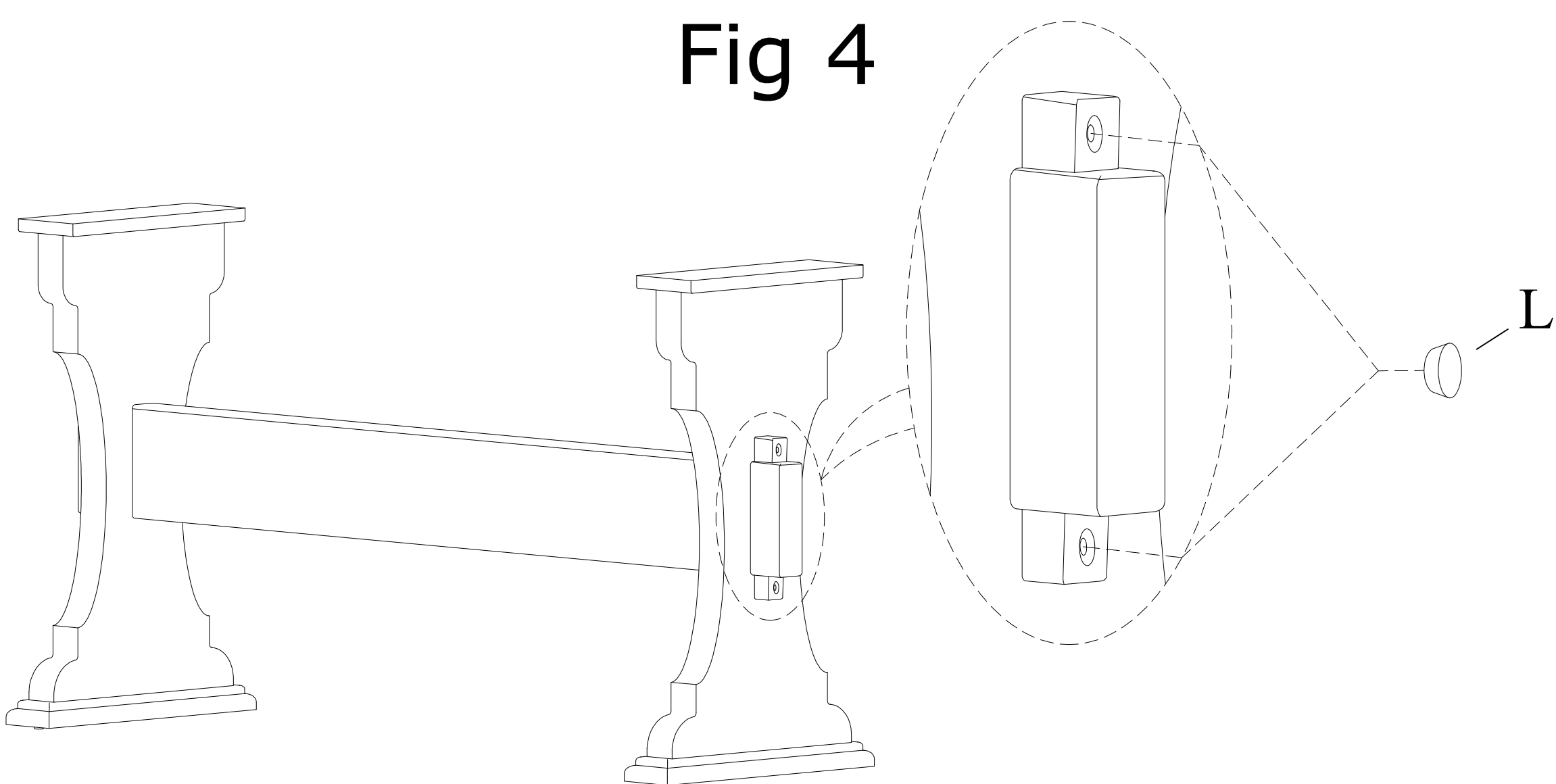


Fig 5

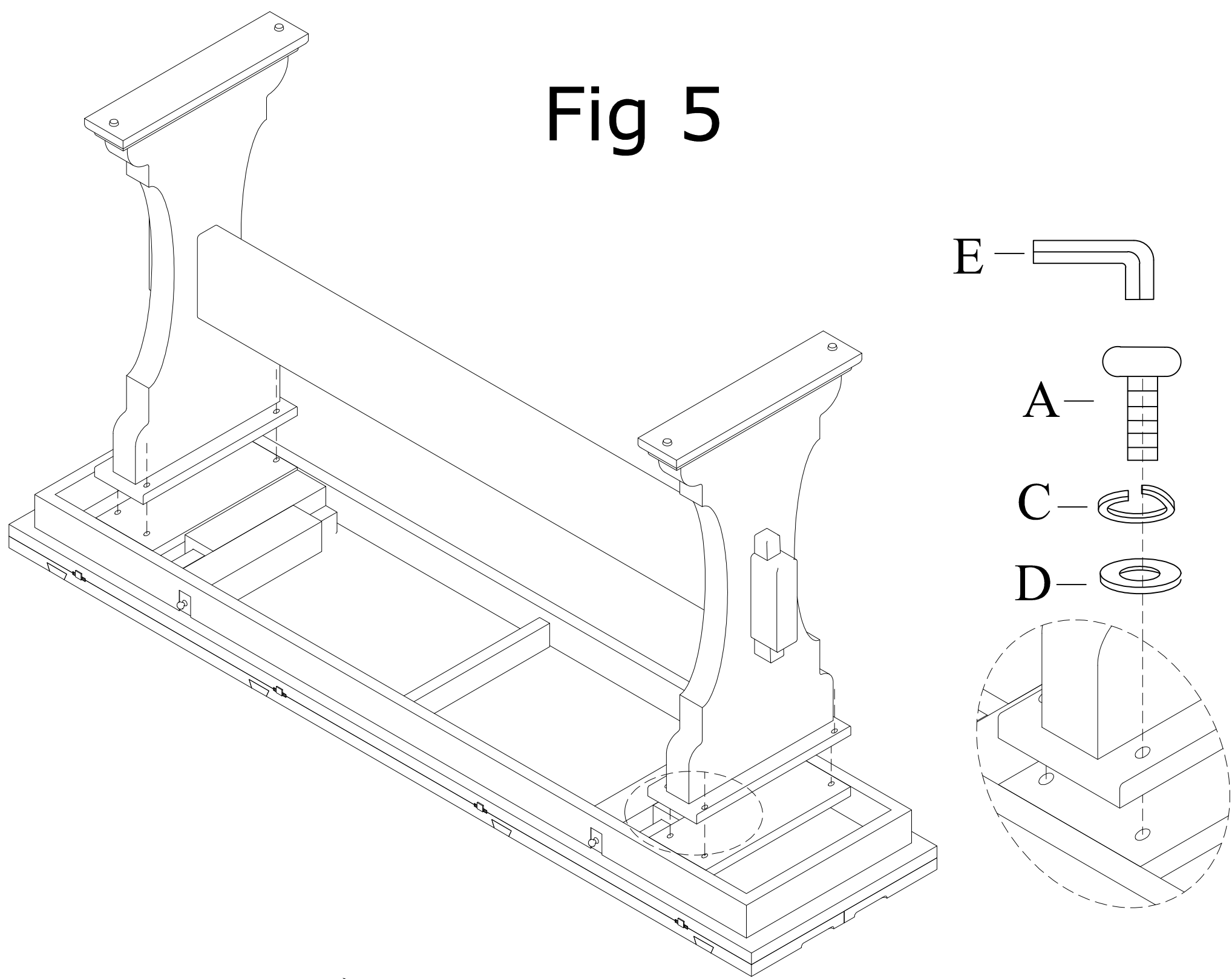
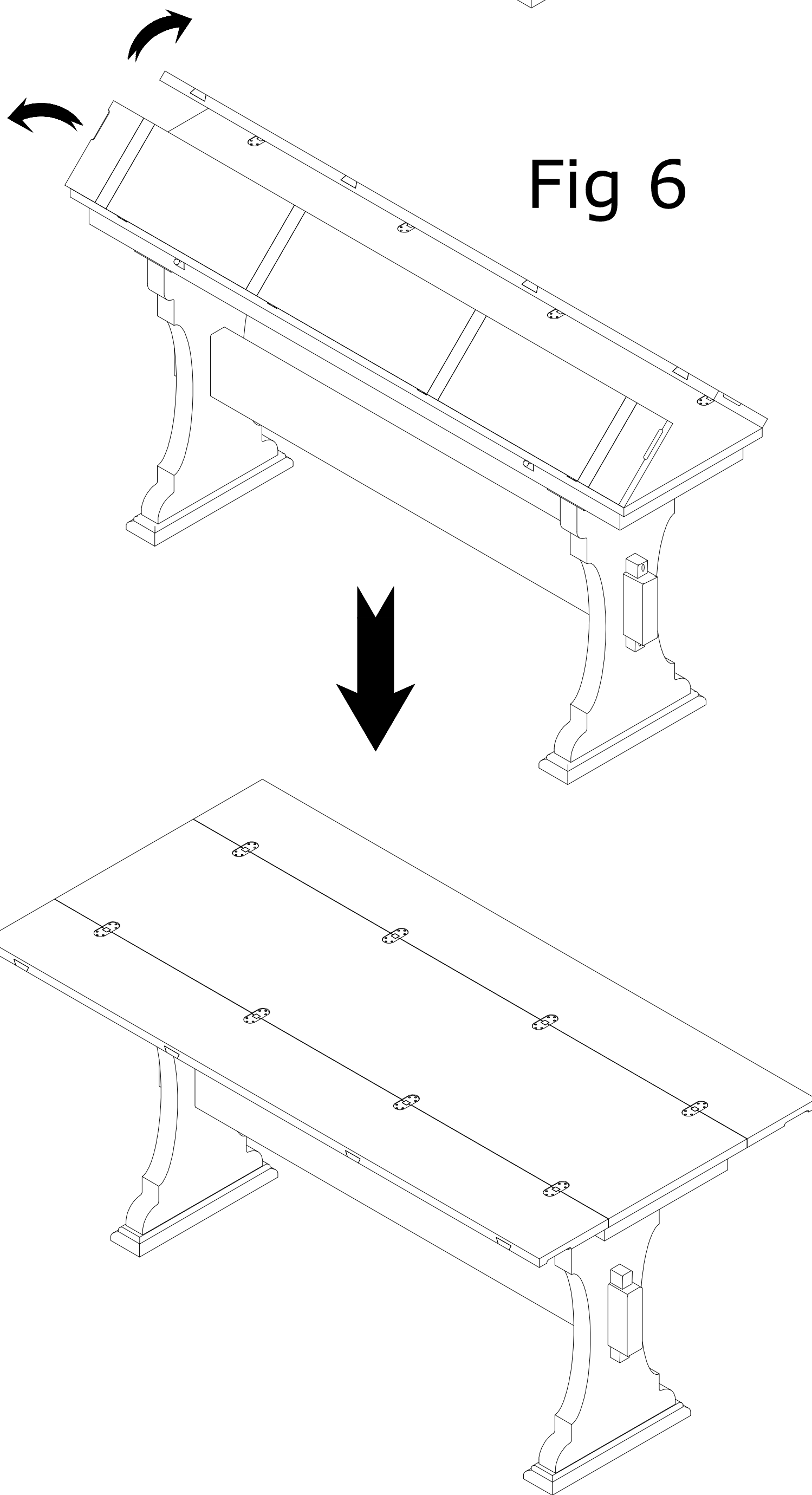



Fig 6



No.	Hardware List		Q'ty
A		Bolt (Ø1/4"*1-5/8")	8pcs
B		Bolt (Ø1/4"*1-3/4")	4pcs
C		Lock Washer (Ø1/4")	12pcs
D		Flat Washer(Ø1/4"x19mm)	12pcs
E		Allen Wrench 4mm	1pc
F		Bolt (Ø5/16"*2-1/4")	4pcs
G		Lock Washer (Ø5/16")	4pcs
H		Flat Washer(Ø5/16"x19mm)	4pcs
I		Allen Wrench 5mm	1pc
K		Wooden Peg (Ø12*50mm)	2pcs
L		Wooden button (Ø23*11mm)	4pcs

Thank you for purchasing furniture!