



# Hana

From animal inspired prints to classic stripes, the Hana frame collection finished in printed hair-on-hide, with accent stitching, adds a graphic accent to any space.

## Sold As

Individual

## Sizes

4" L x 6" H

## Additional Info

4x6 Frame Size, 6" L x 8" H 5x7 Frame Size, 7" L x 9" H 8x10 Frame Size, 10" L x 12" H

This item is handcrafted and may show slight variation from one piece to another.



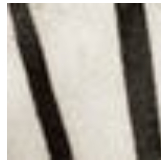
## FINISHES & MATERIALS



Dalmatian Print  
Hair-On-Hide



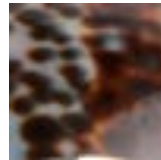
Cheetah Print  
Hair-On-Hide



Zebra Hair-On-  
Hide



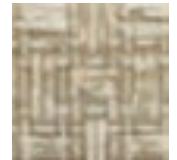
Brown Candy  
Striped Hair-On-  
Hide



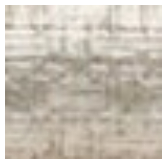
Tiger Cowrie Shell



Natural  
Bone/Distressed  
Gold



Sand Faux Rattan



Warm Silver Faux  
Rattan



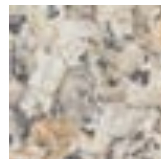
Shiny White Faux  
Rattan



Oat Brown Ostrich  
Full-Grain Leather



Light Gray Ostrich  
Full-Grain Leather



Natural Laminated  
Oyster