

Assembly instructions

All you will need to assemble your recycling bin storage unit is a Philips screw driver. Here are your 6 easy steps to follow –

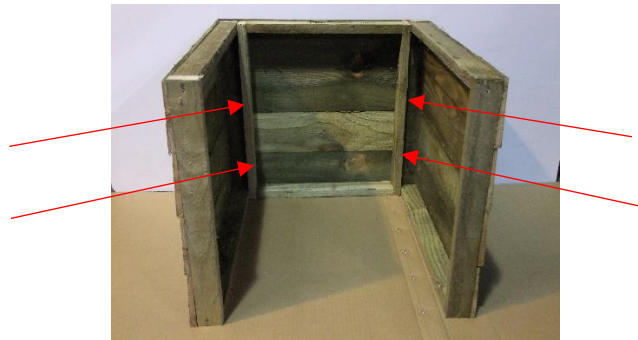
Your recycling bin storage unit will consist of

- 1 x base
- 1 x shelf
- 1 x roof
- 2 x back board
- 4 x side boards
- 23 x screws

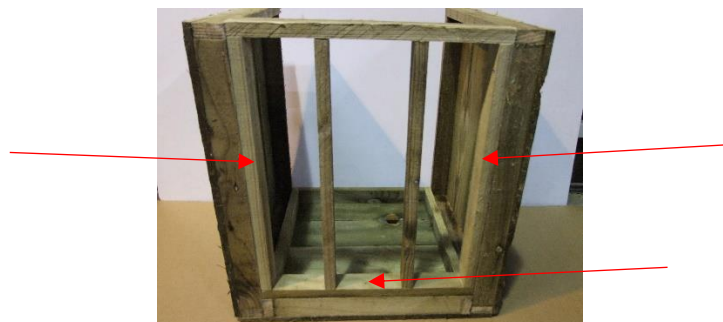


please note base and shelf inside side panels for packaging reasons.

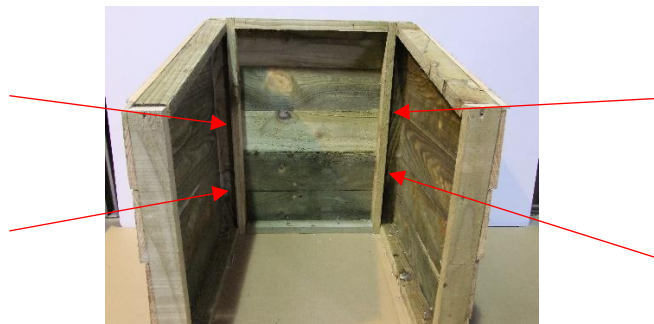
1. To start building your storage unit you will need your smallest **back board** and 2 non-angled **side boards**, screw these together where shown on diagram below.



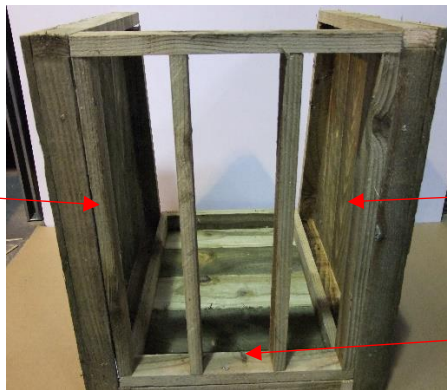
2. Now you will need your **base**, screw this to your frame where shown in diagram below.



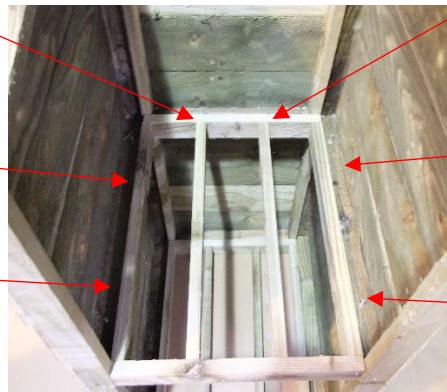
3. Now you should have the bottom part of your storage unit built, to build the top section you will now need the remaining **back board** (larger) and the **angled sideboards**. Screw together as per diagram.



4. Now insert your **shelf** and screw together where shown in diagram below.



5. Now place your **top unit** direct on top of your **base unit**, screw together where shown in below diagram.



6. Now sit your **roof** on top of your unit and screw together where shown in diagram below.

