

INSTRUCTIONS

Modular Sofa

CARTON A PART LIST

A Left Armrest



x1

B Single Seat Frame



x1

C Single Backrest



x1

D Seat Cushion



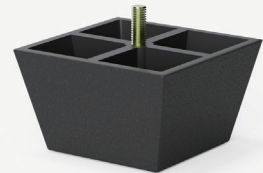
x1

E Back Pillow



x1

1 Sofa Legs



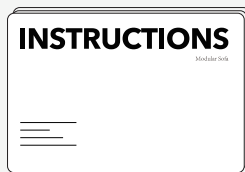
x6

2 Plastic Washer



x6

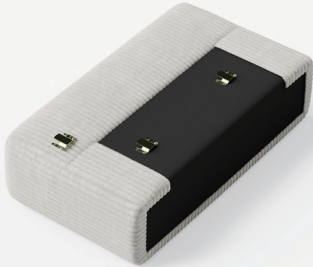
3 Assembly Instructions



x1

CARTON B PART LIST

F Right Armrest



x1

B Single Seat Frame



x1

C Single Backrest



x1

D Seat Cushion



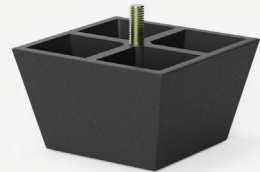
x1

E Back Pillow



x1

1 Sofa Legs



x6

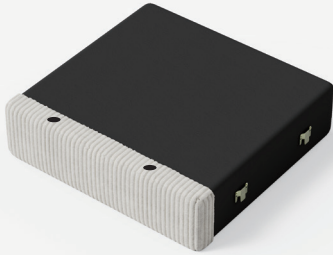
2 Plastic Washer



x6

CARTON C PART LIST

B Single Seat Frame



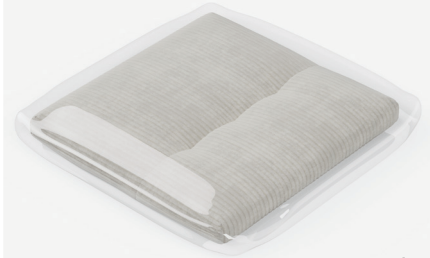
x1

C Single Backrest



x1

D Seat Cushion



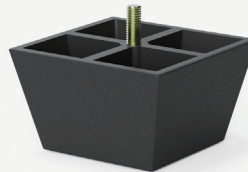
x1

E Back Pillow



x1

1 Sofa Legs



x4

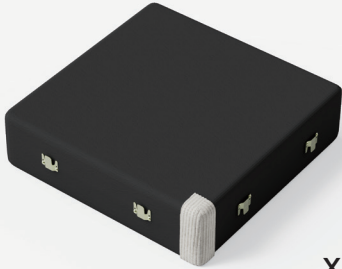
2 Plastic Washer



x4

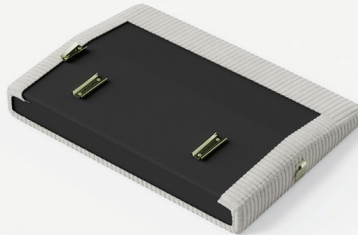
CARTON D PART LIST

G Corner Seat Frame



x1

H Corner Long Back Frame



x1

I Corner Short Back Frame



x1

J Corner Seat Cushion



x1

K Corner Long Back Pillow



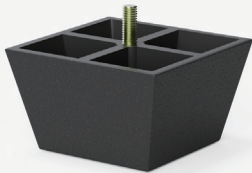
x1

L Corner Short Back Pillow



x1

1 Sofa Legs



x4

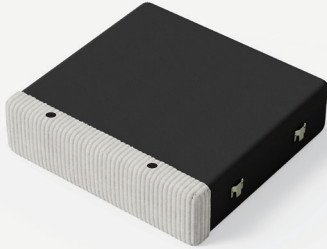
2 Plastic Washer



x4

CARTON E PART LIST

B Single Seat Frame



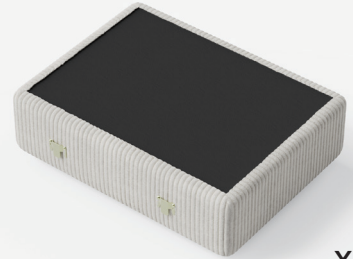
x1

C Single Backrest



x1

M Seat Frame



x1

N Seat Cushion



x1

D Seat Cushion



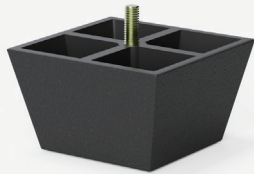
x1

E Back Pillow



x1

1 Sofa Legs



x8

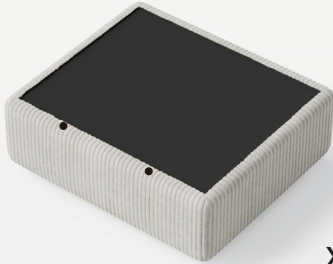
2 Plastic Washer



x8

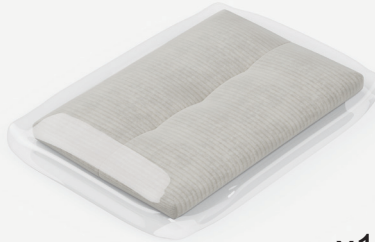
CARTON F PART LIST

P Ottoman Seat Frame



x1

Q Ottoman Seat Cushion



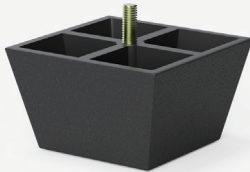
x1

R U-shaped Connector



x2

1 Sofa Legs



x4

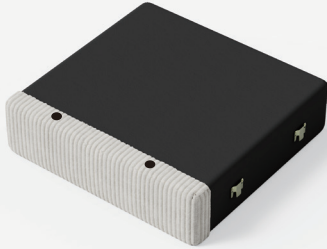
2 Plastic Washer



x4

CARTON G PART LIST

B Single Seat Frame



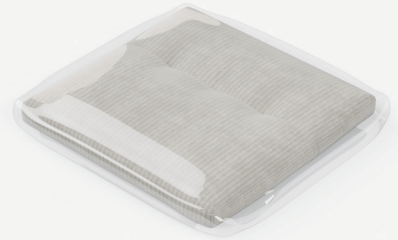
x1

C Single Backrest



x1

D Seat Cushion



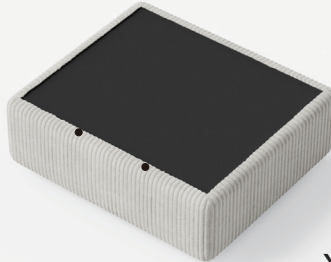
x1

E Back Pillow



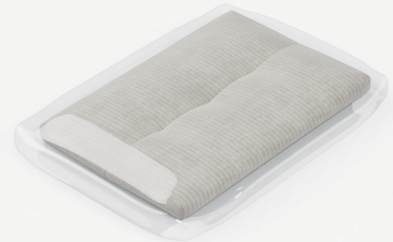
x1

P Ottoman Seat Frame



x1

Q Ottoman Seat Cushion



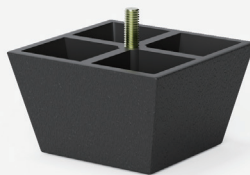
x1

R U-shaped Connector



x2

1 Sofa Legs



x8

2 Plastic Washer



x8

Notice:

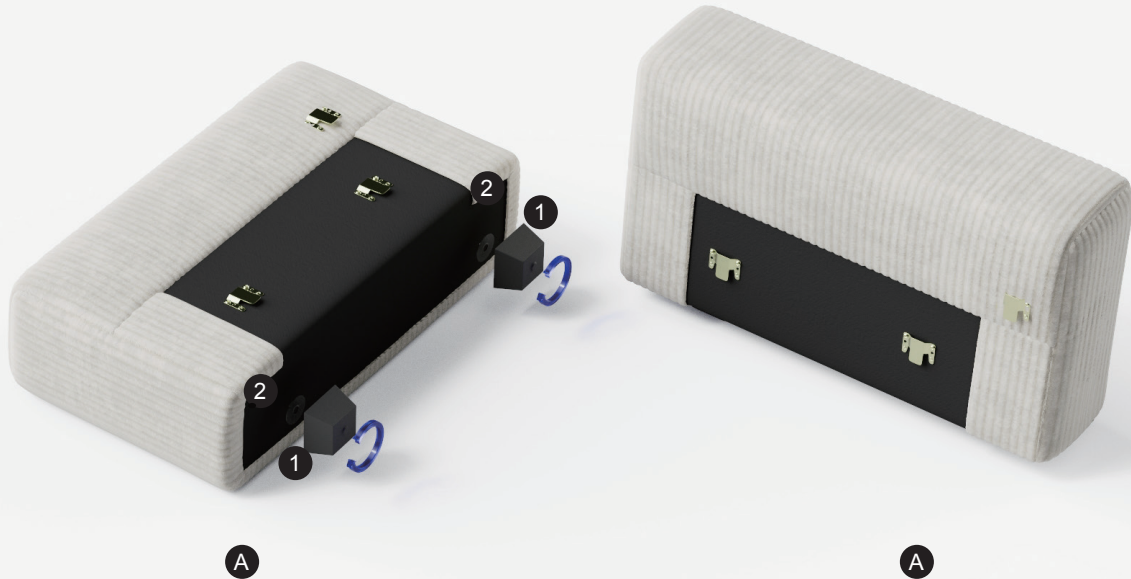
Modular sofas consist of several modules as described above, but not all types are included in every sofa set.

You can extend your sofa at any time by ordering new modules.

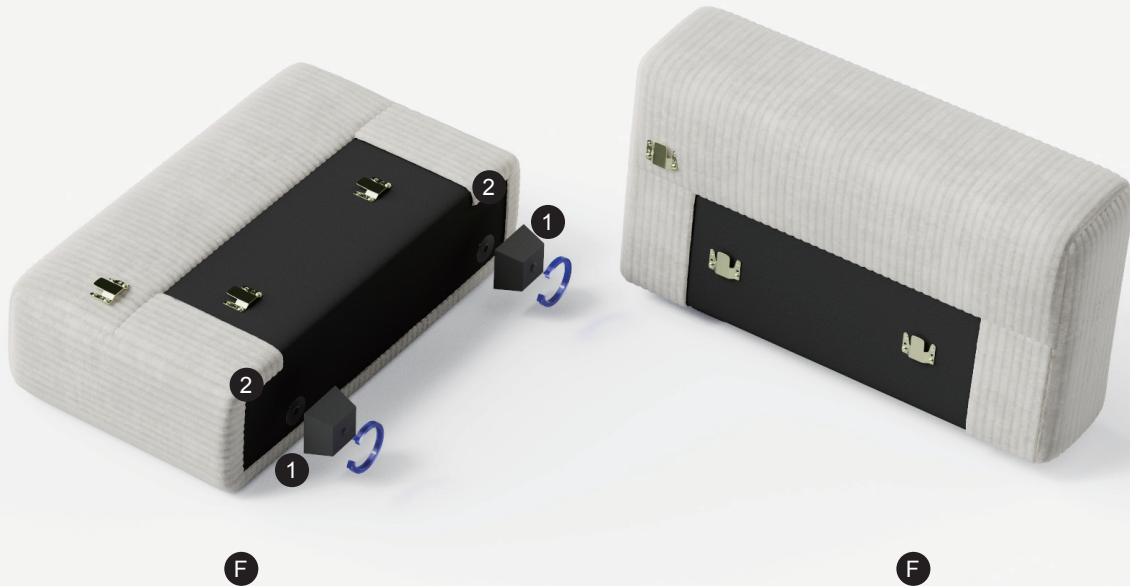
Please note the following points when assembling your sofa:

- ① Screw all the legs of the sofa tightly before starting to connect these modules
- ② Put these modules together should be done in right-to-left order
- ③ Connect the Right Amrest and all Seat Frame first, then the Backrest and Left Armrest

Step1:



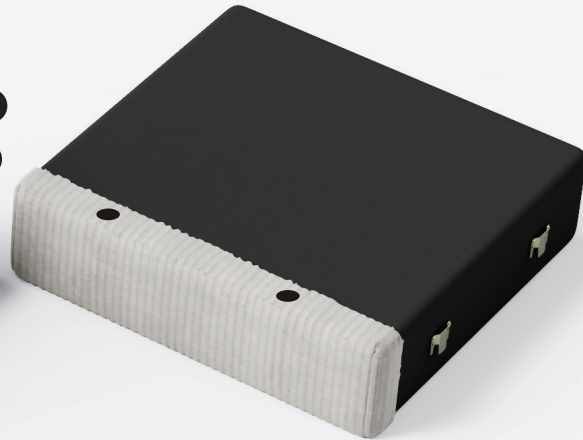
Step2:



Step3:



B

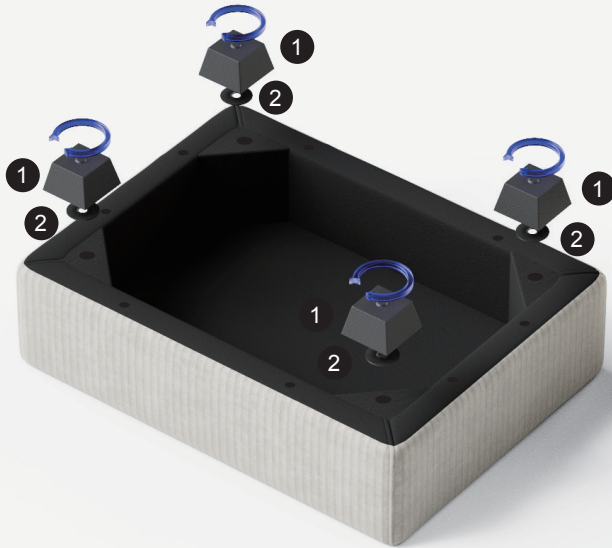


B

Step4:



Step5:

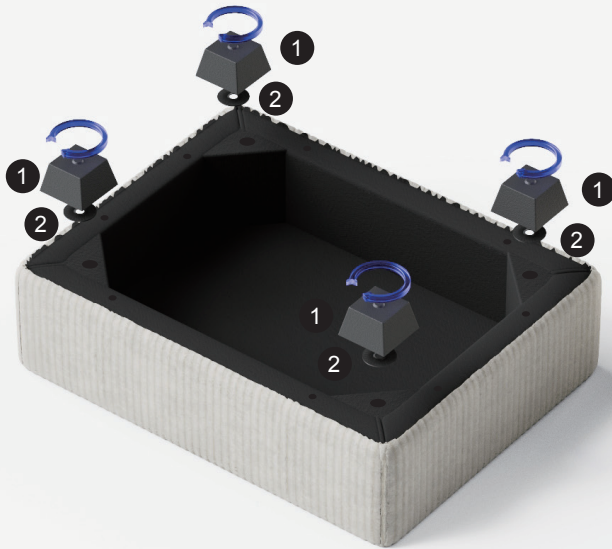


M



M

Step 6:

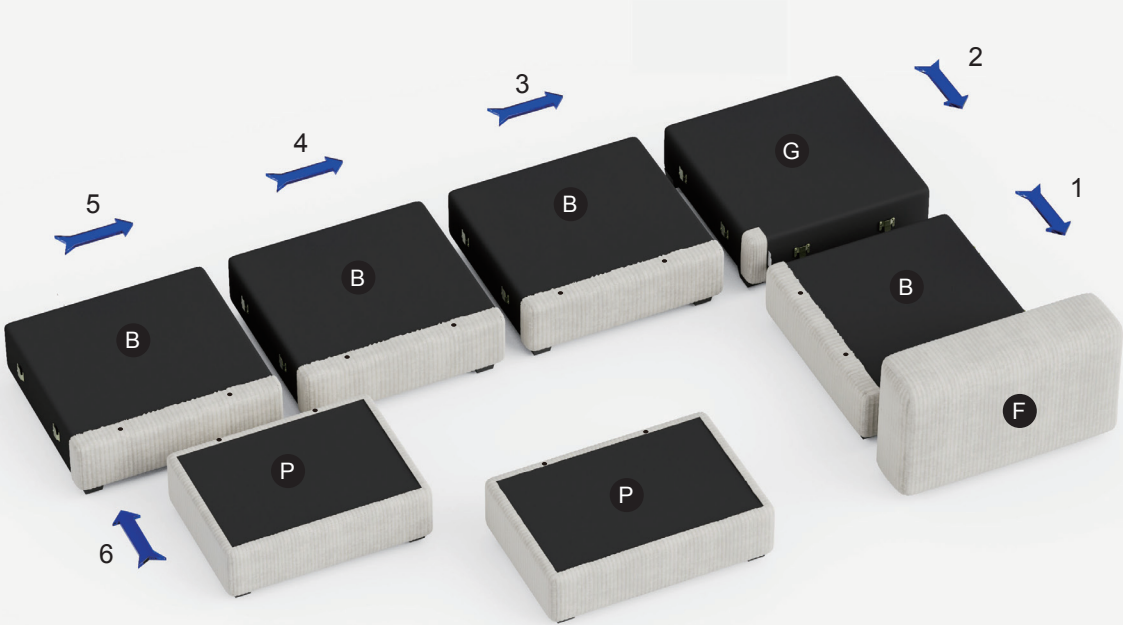


P



P

Step7:



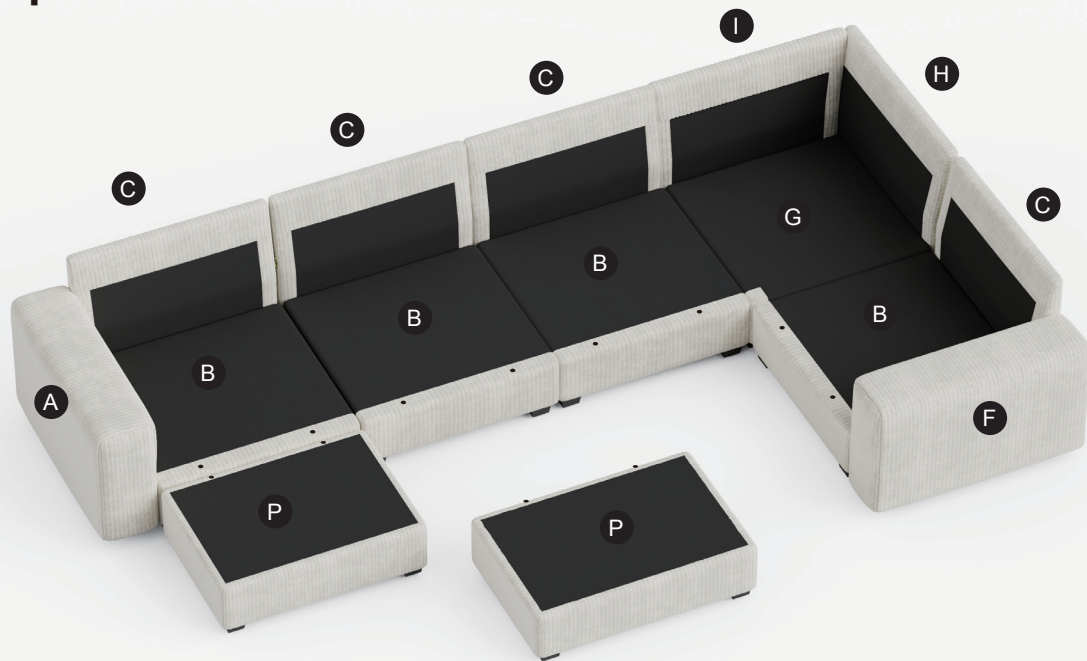
Follow the arrows to connect the Right Armrest and each Seat Frame in right-to-left order. If your sofa does not contain a certain module, skip it and connect to the next one.

Step8:



Connect each Backrest and the Left Armrest in right-to-left order.

Step9:

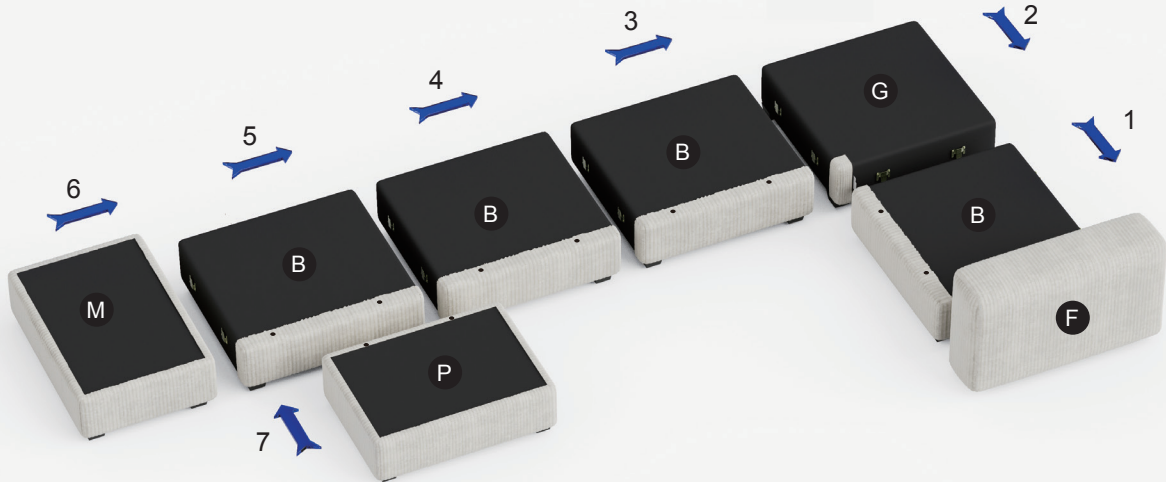


Step10: Done



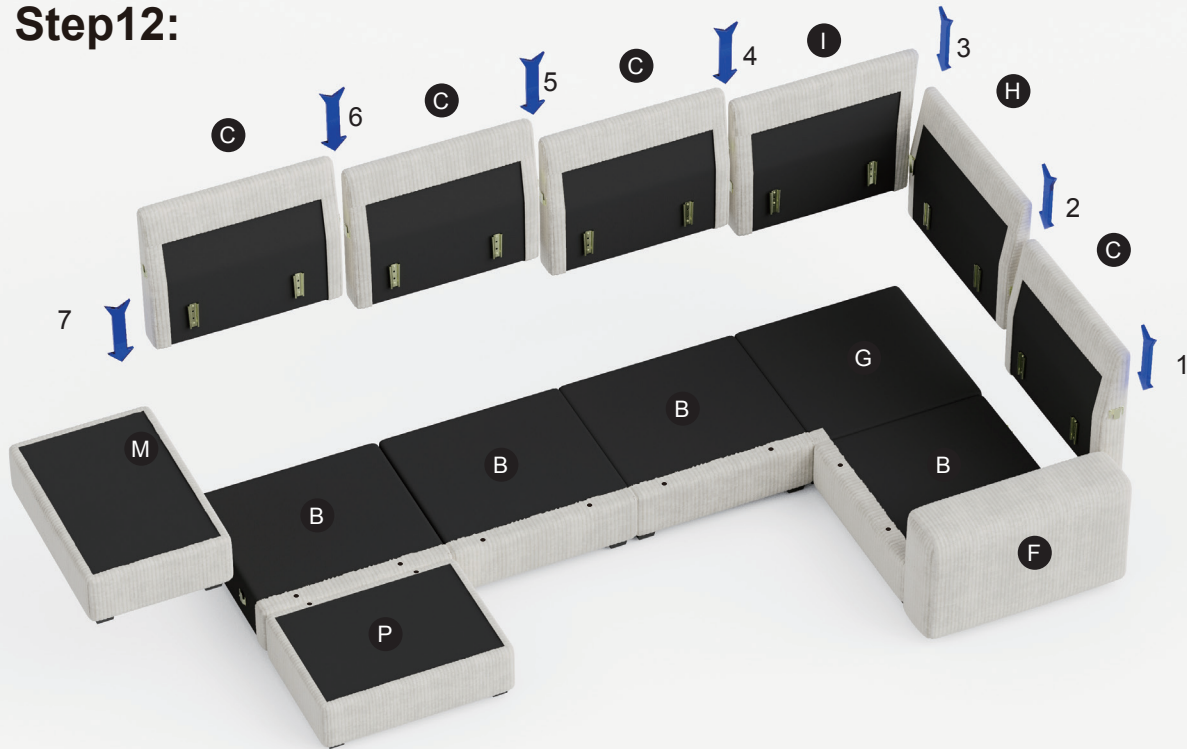
This combination is made up of part list included in the carton (A+B+C+D+F+G)

Step11:



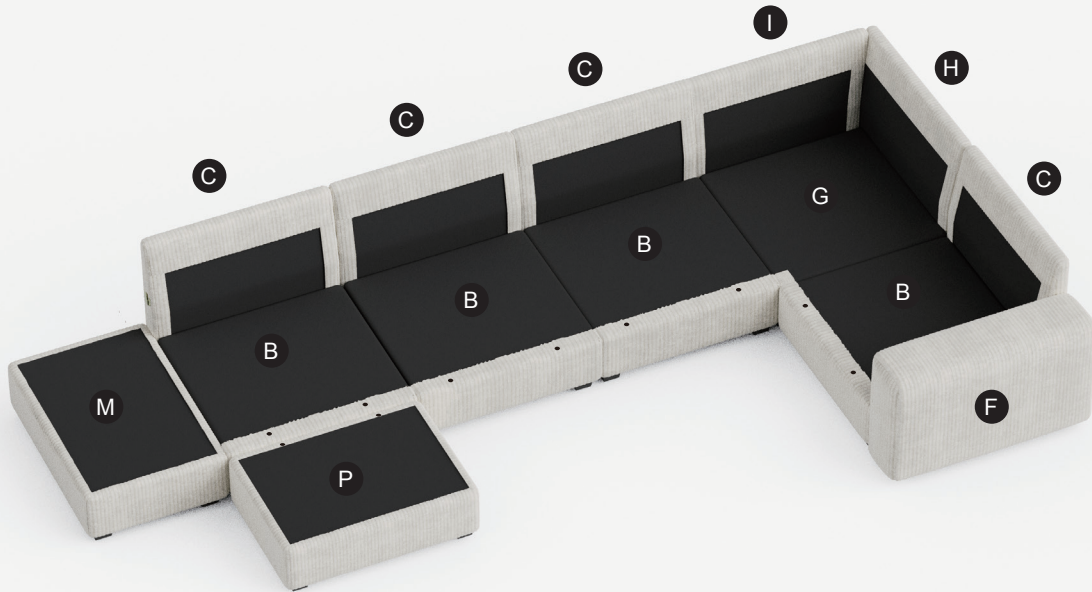
Follow the arrows to connect the Right Armrest and each Seat Frame in right-to-left order. If your sofa does not contain a certain module, skip it and connect to the next one.

Step12:



Connect each Backrest and the Left Armrest in right-to-left order.

Step13:



Step14: Done



This combination is made up of part list included in the carton (B+C+D+E+F+G)