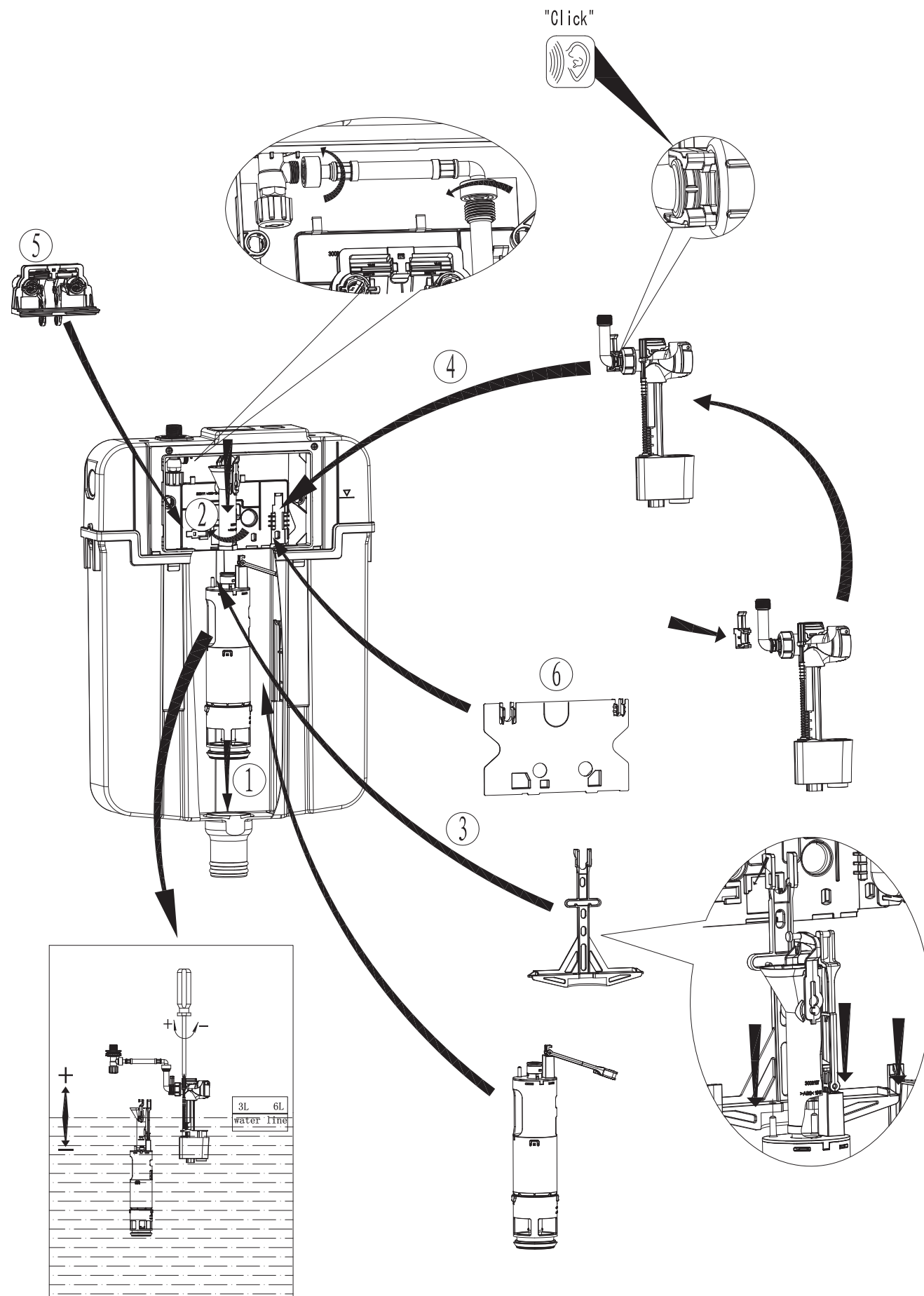


## 10. Internal flushing mechanism assembly drawing



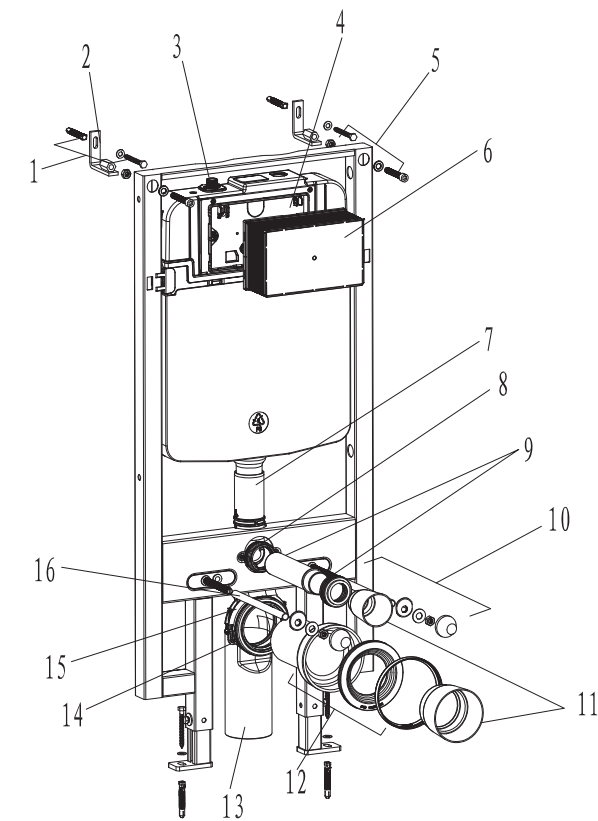
The internal flushing mechanism are already well-assembled and above picture only for reference.

ASGFAF0393002A-1.0

**R&T**®

Concealed Cistern

Installation Manual



### List of main installation accessories

No.	Description	Qty	Function
1	Expansion screw	4	Fixation of frame
2	Wall bracket	2	Fixation of frame
3	Angle valve	1	Fill valve inlet and shut-off
4	Cistern cover	1	Mounting of locking bracket
5	Socket head screw	2	Mounting of frame and locking into wall bracket
6	Plastic holder	1	To reserve space for installation of actuator at wall building
7	Connecting tube	1	Water inlet to ceramic bowl
8	Fixing screws	2	To fix connecting tube
9	Flushing piping	1	To joint cistern into ceramic bowl(cutting in accordance with wall thickness)
10	Connecting screw	2	To mount ceramic bowl
11	Piping stopper	2	To reserve space for flushing piping at wall building To reserve space for discharging piping at wall building
12	Connecting pipe	1	To joint drain pipe into ceramic bowl (cutting in accordance with wall thickness)
13	Draining syphon	1	To discharge liquid and solid waste from ceramic bowl
14	Mounting bracket	1	To mount draining syphon
15	Draining syphon holder	1	To mount draining syphon
16	Protective cover	2	To protect connecting screw at wall building

**Important instruction:**

1. Please adhere to the following installation instructions. We shall not be responsible for failures and loss that are contributed to improper installation.
2. Please confirm the fixation location of cistern prior to installation and obtain the finished floor surface. Draw FFL on installation wall and follow it as baseline from ZERO (0) level.
3. The instructions have been composed based in the latest product specifications. We reserve the right to make modifications to the packaging and specifications without providing prior notification.

**NOTES:**

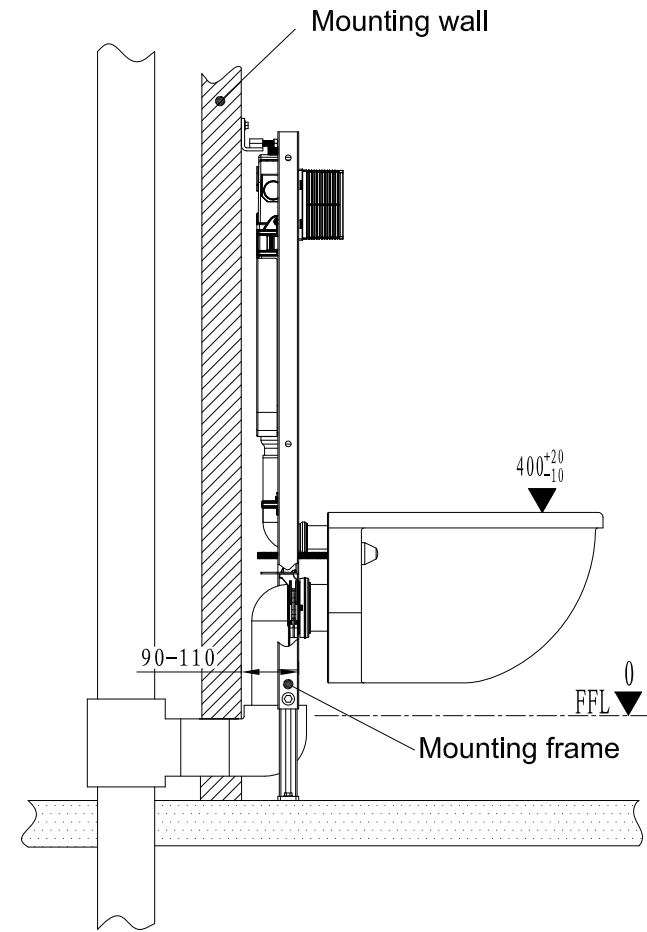
1. Mount before bricks building.
2. All size unit in MM.
3. Follow the material product, should there is an unconformity with drawing.

! FFL  $\nabla$  = Finished Floor.

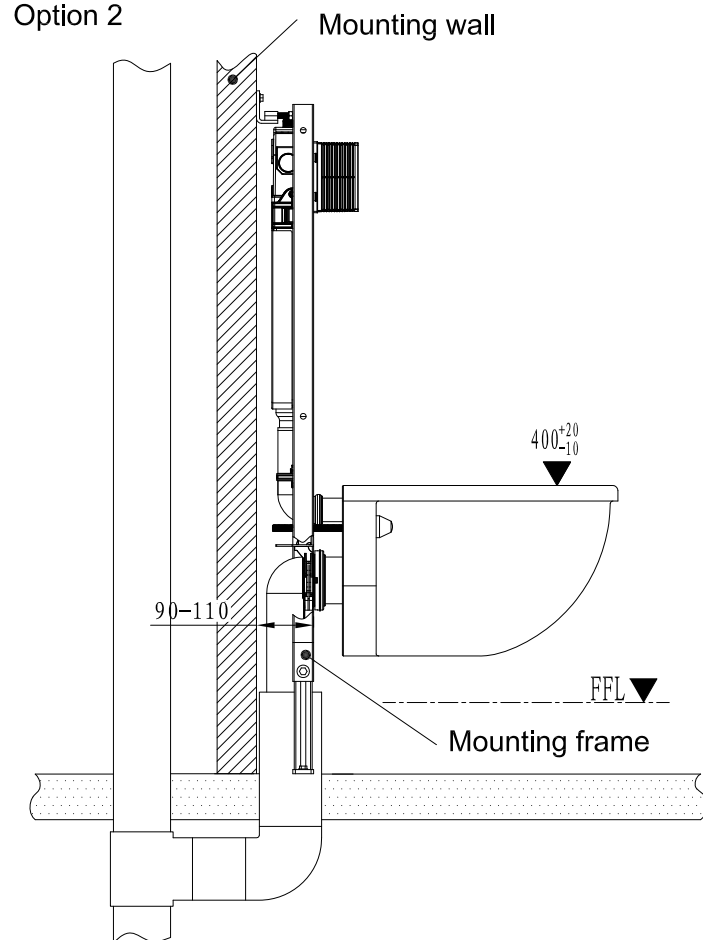
## 1. Drainage System Layout

Drawing 1 to 3 are three different installation systems for drain pipe. Customer should confirm whichever installation system according to drainage outlet position. If drainage outlet does not fall within the three systems, customer should follow one of three drainage system layout to correspond installation of our concealed cistern.

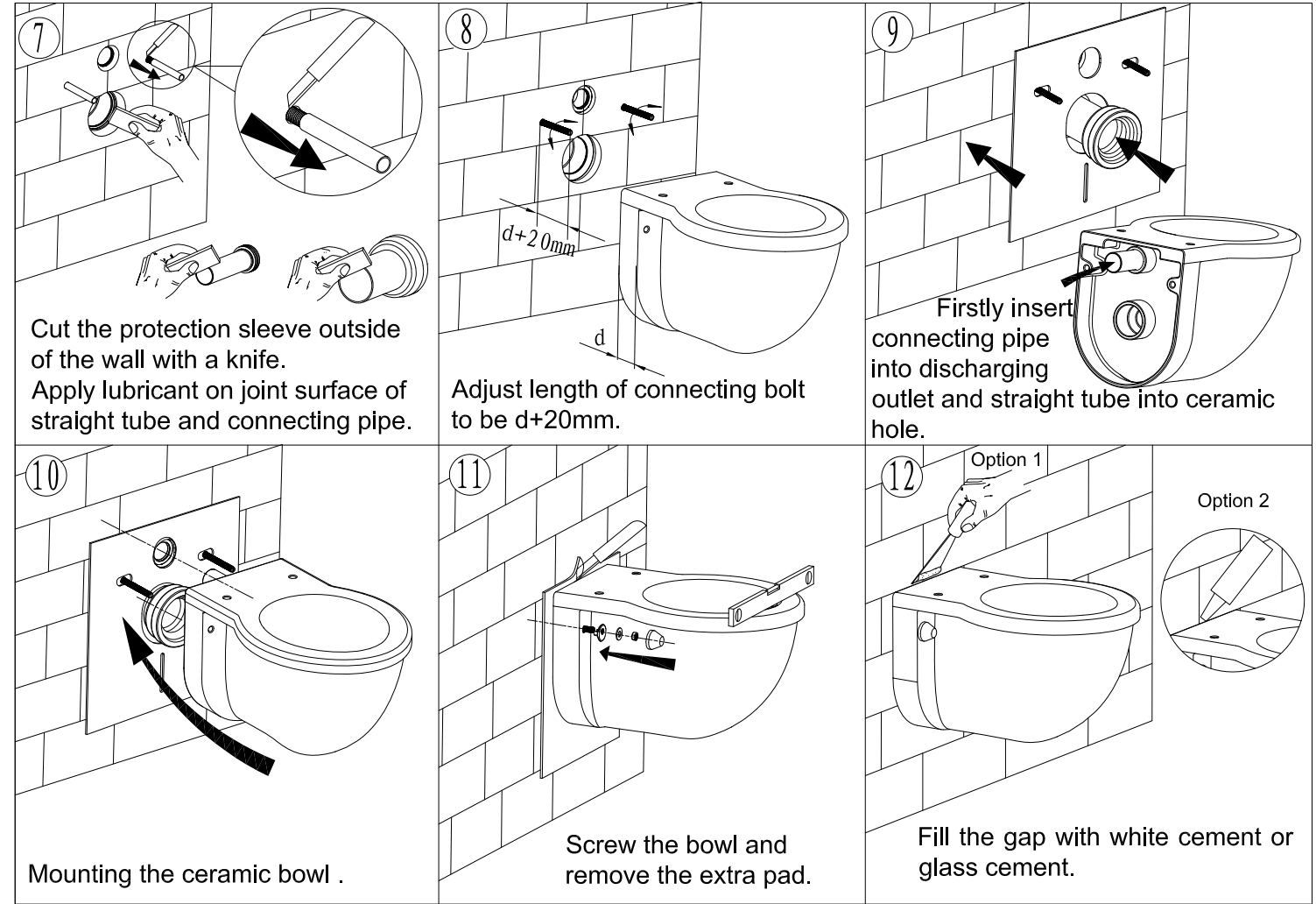
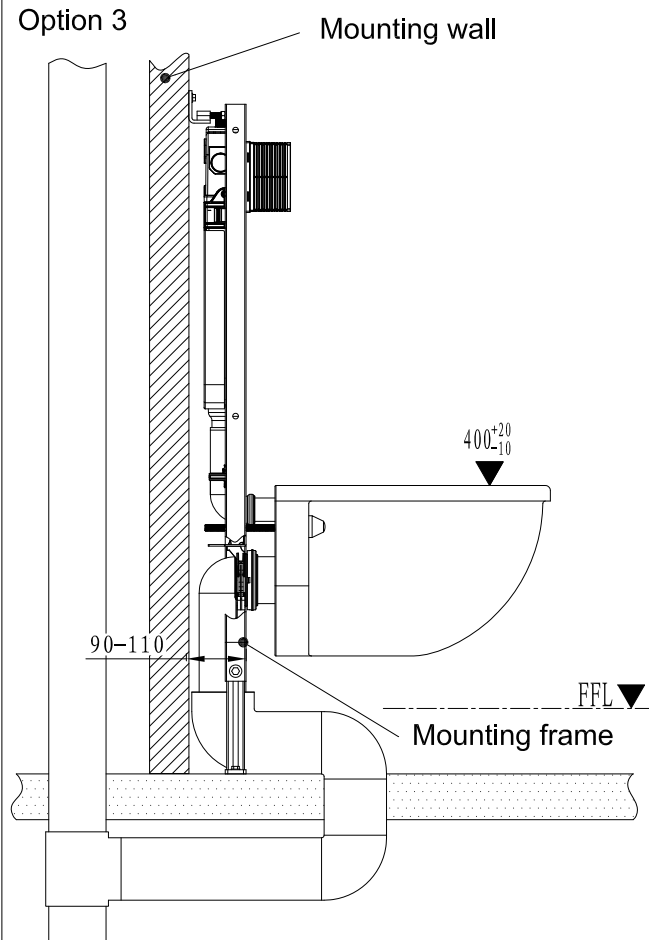
Option 1



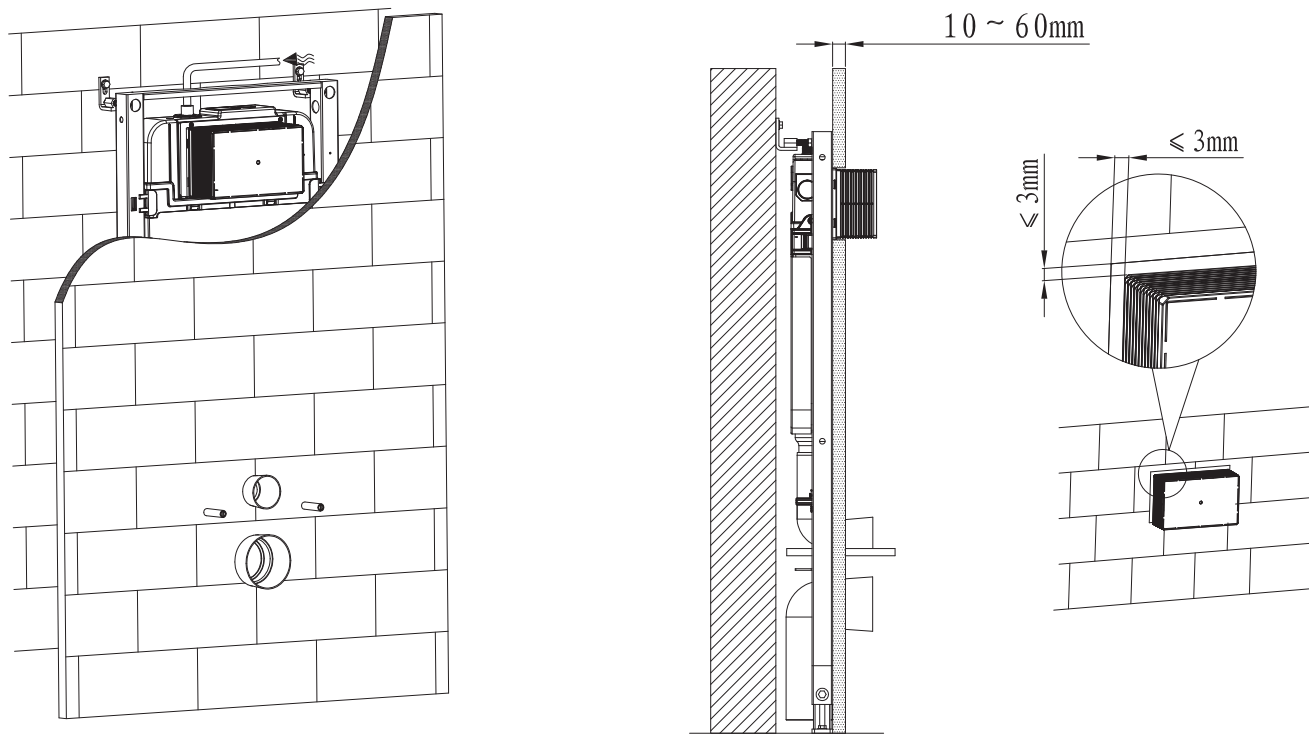
Option 2



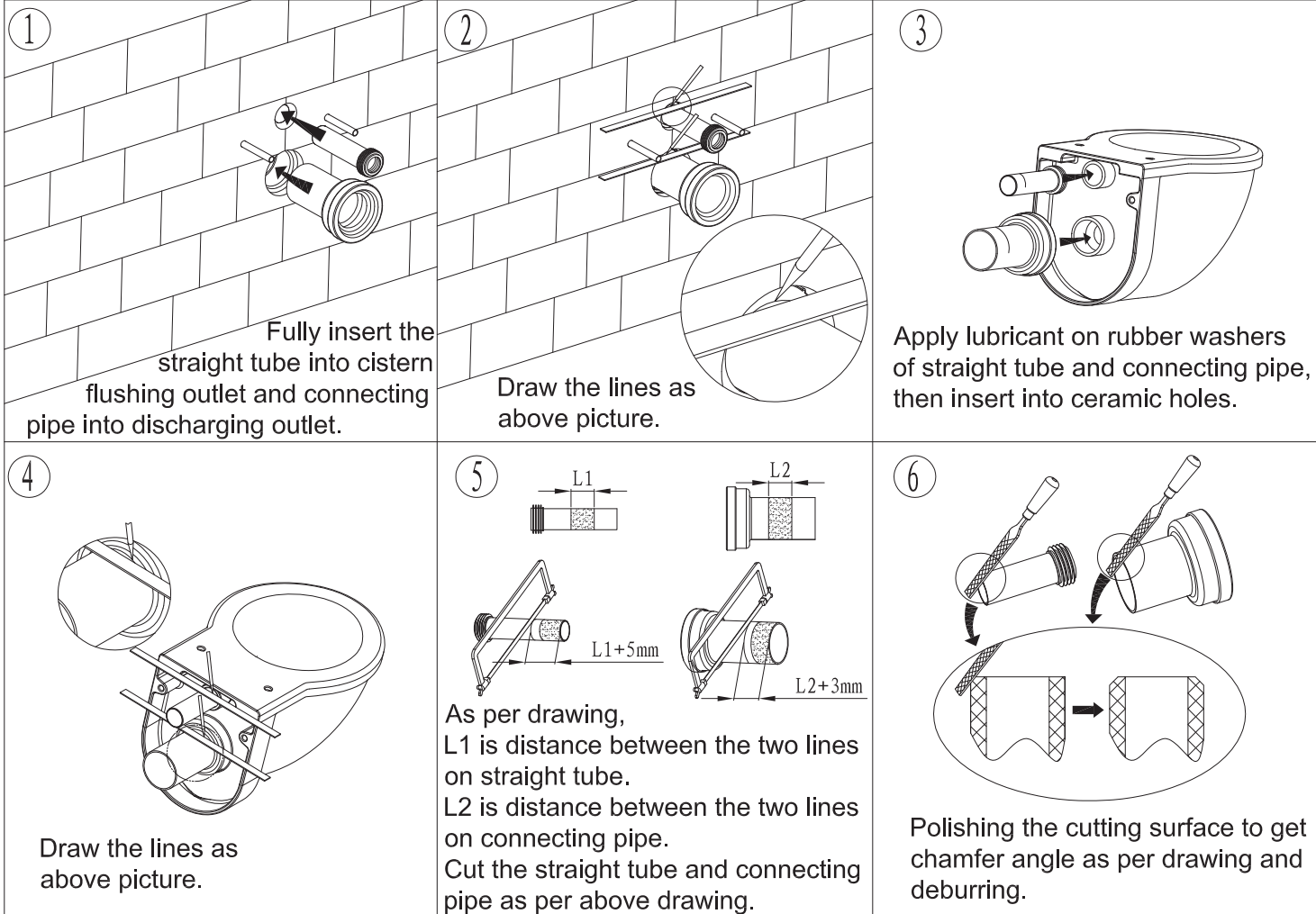
Option 3



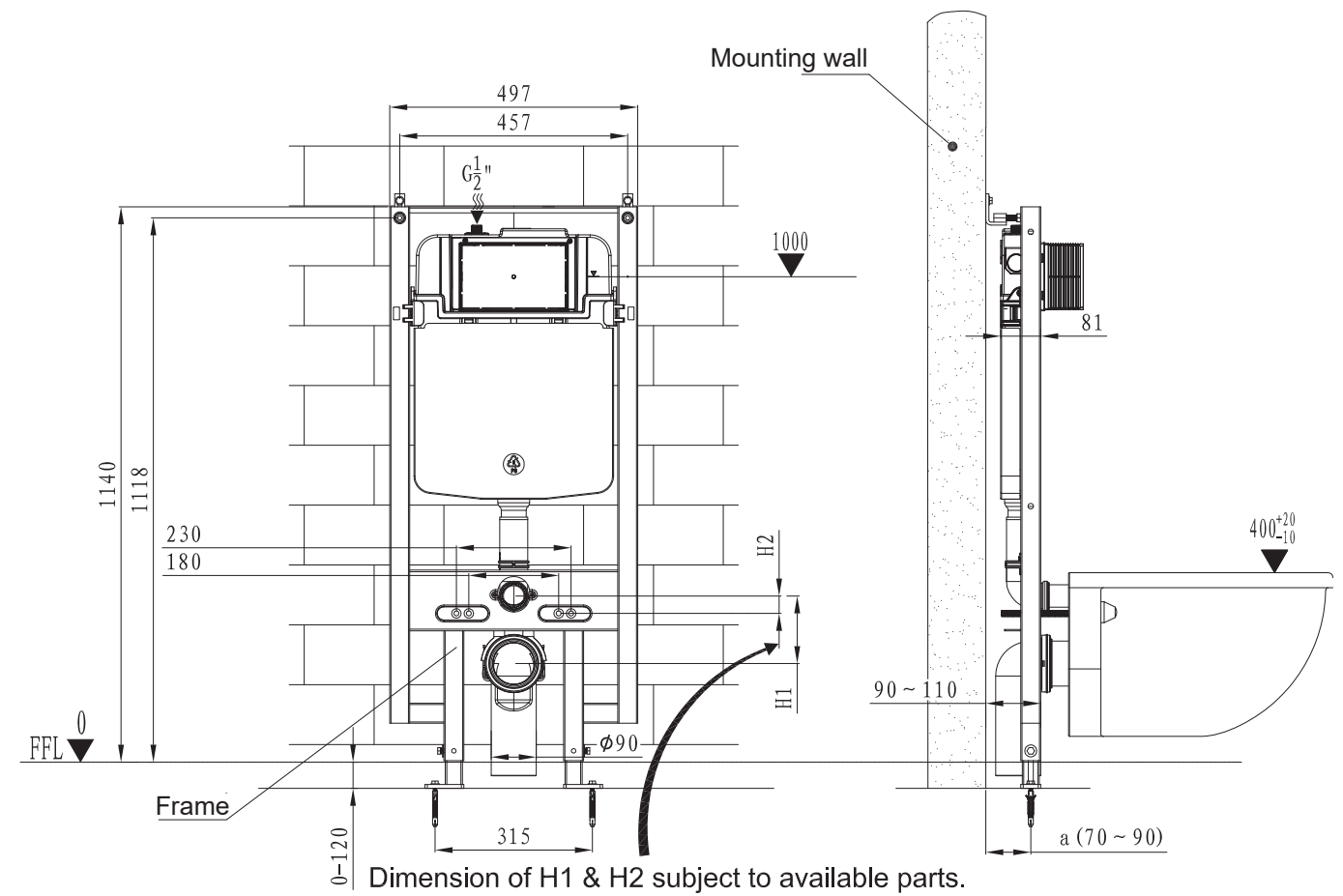
8. Wall thickness ranges between 10~60 mm  
(From the outer surface of cistern to the finished wall)



9. Mounting of ceramic bowl

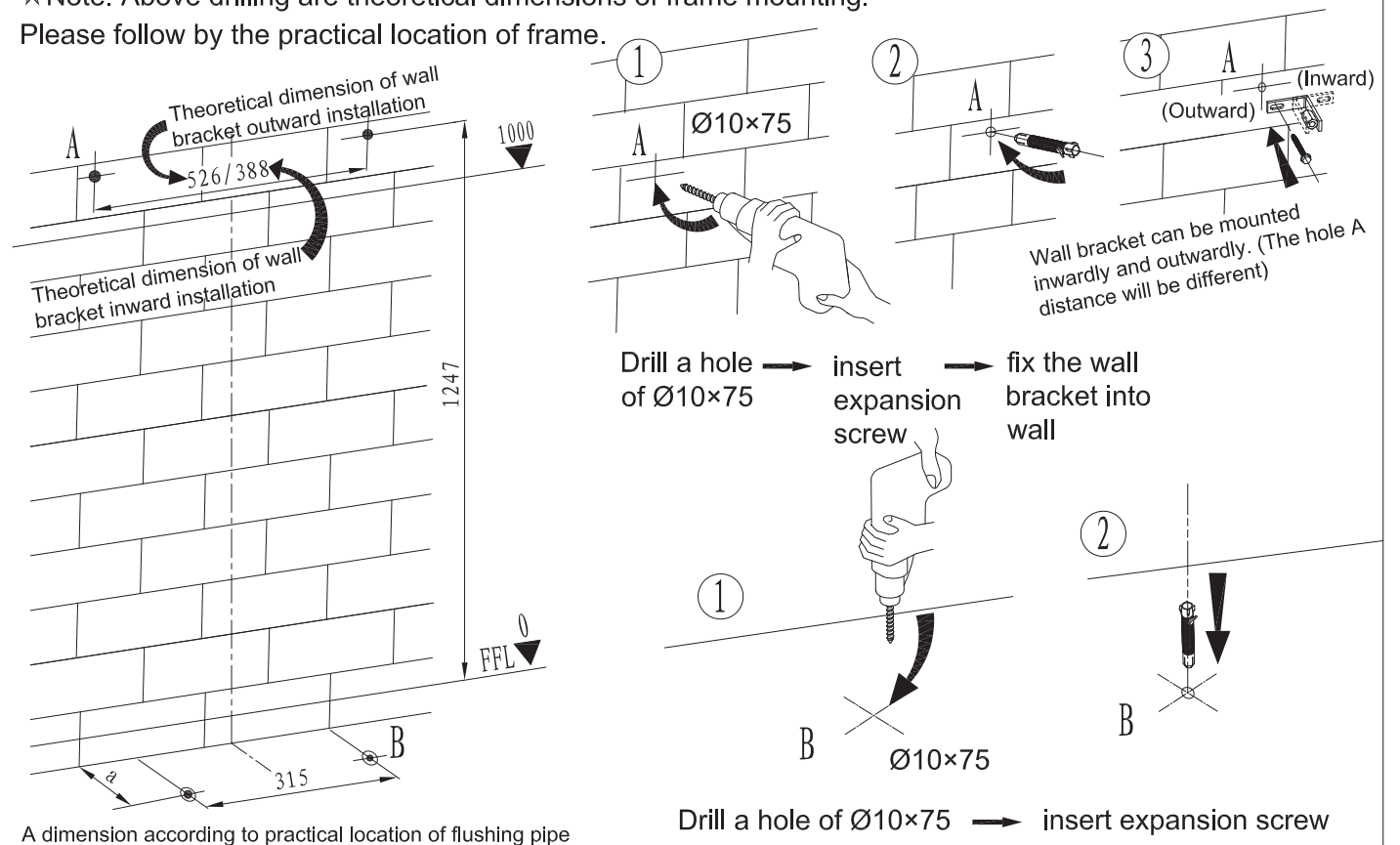


2. General dimension and water supply drawing

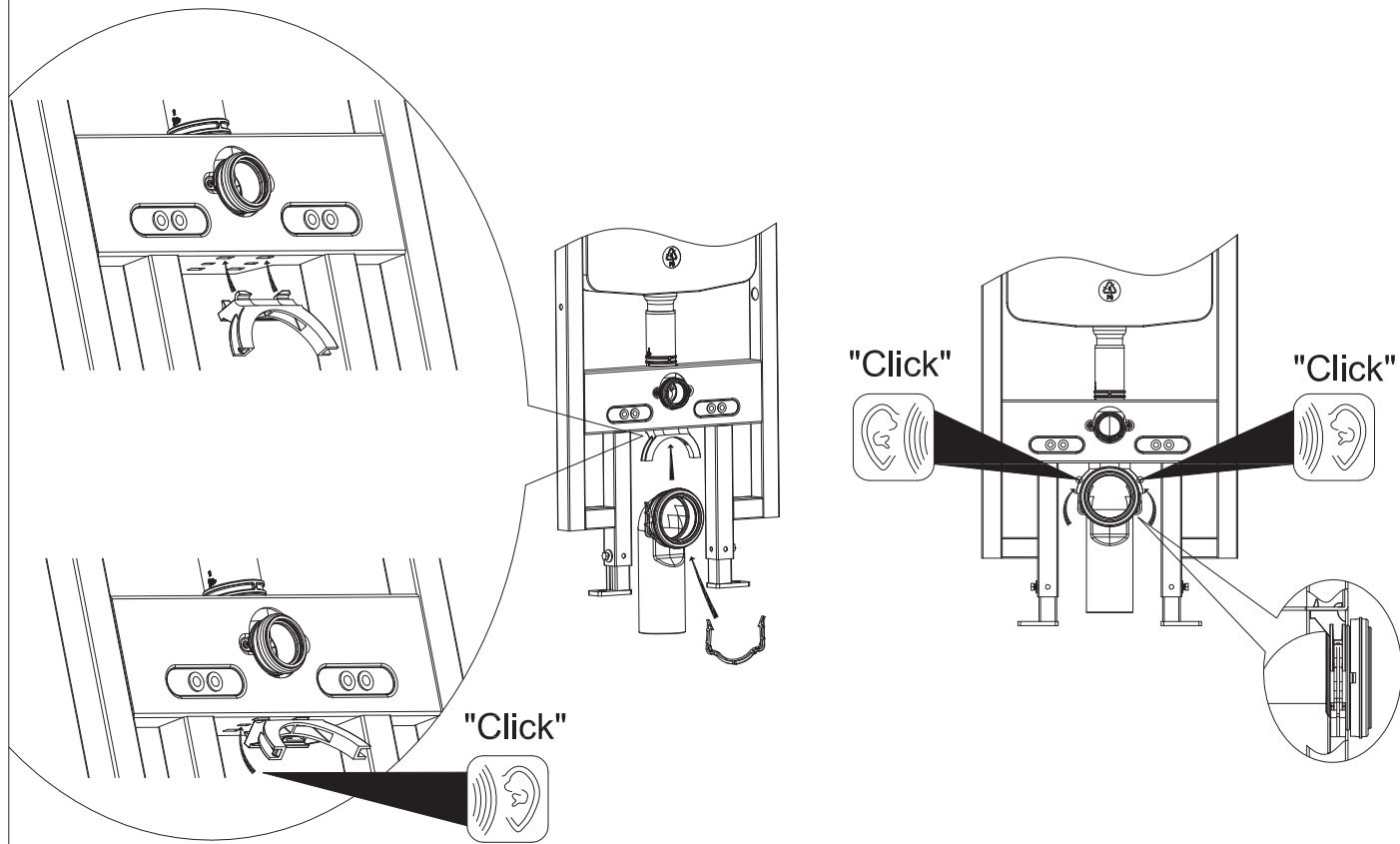


3. Drill the holes and insert the expansion bolt

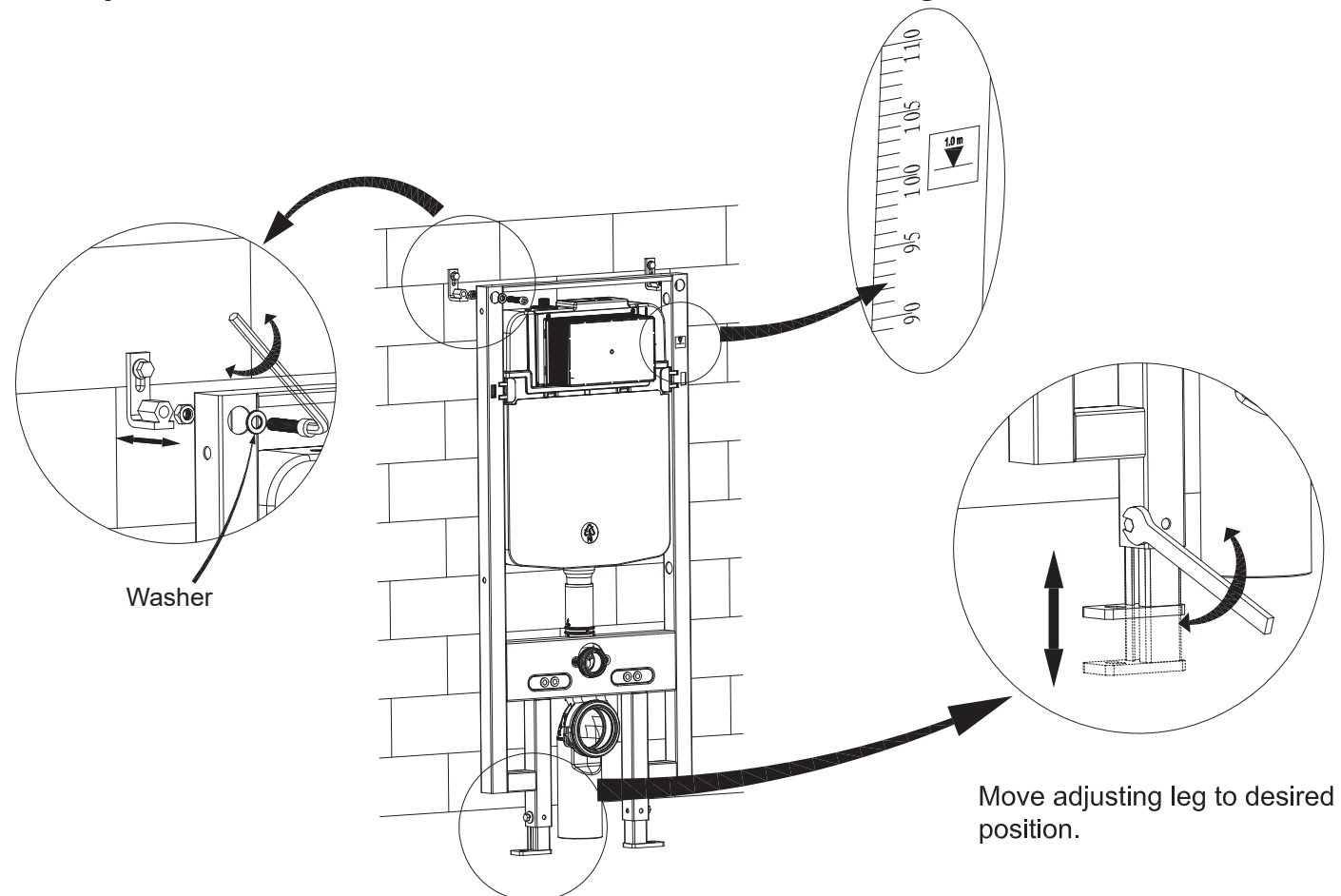
☆ Note: Above drilling are theoretical dimensions of frame mounting. Please follow by the practical location of frame.



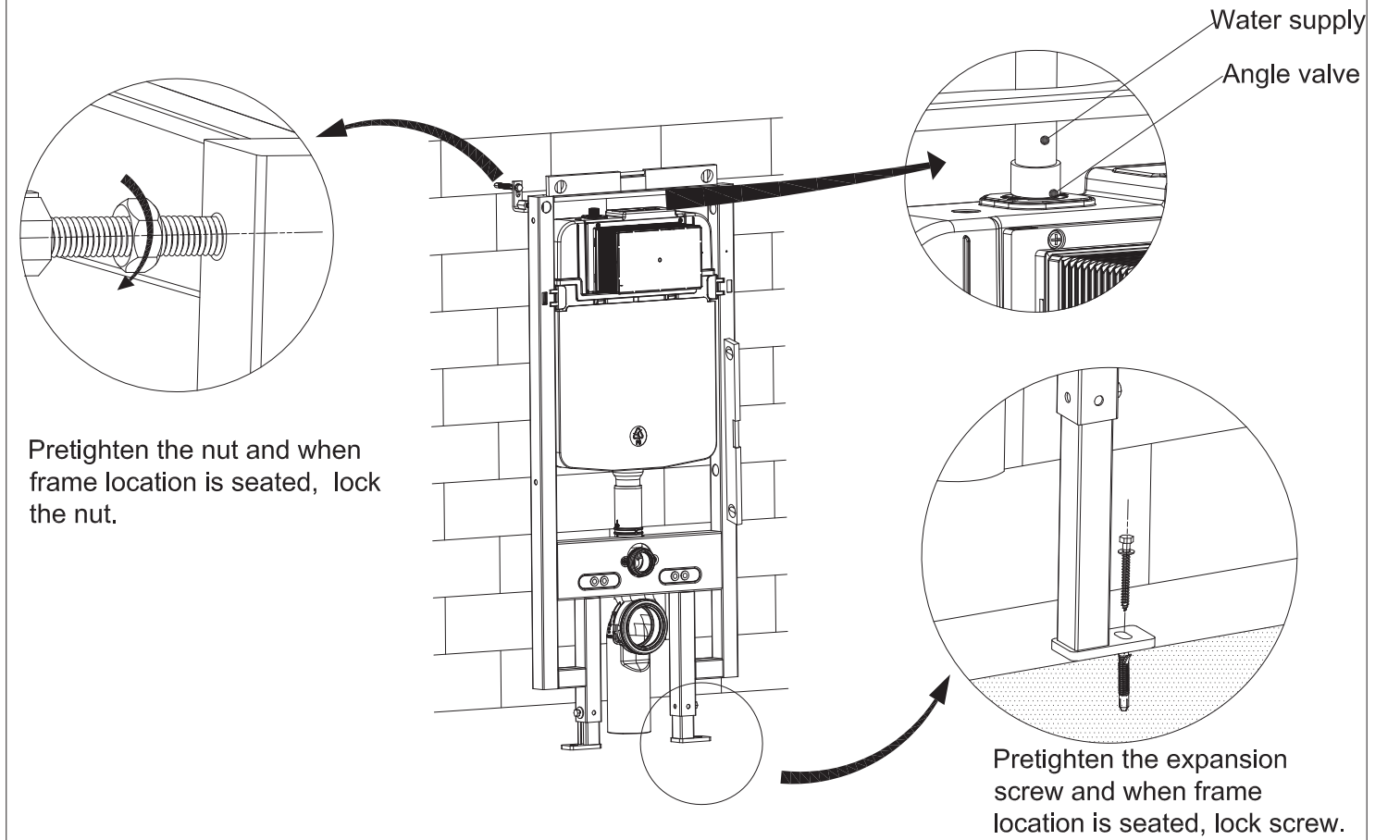
#### 4. Installation of draining siphon



#### 5. Adjustment of socket head screw and floor fixing accessories



#### 6. Adjust the frame, then fix it, and install water supply



#### 7. Mounting of installation accessories

