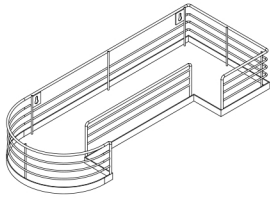
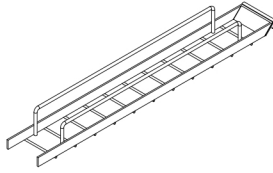


ASSEMBLY INSTRUCTION



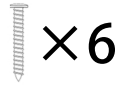
×3



×2

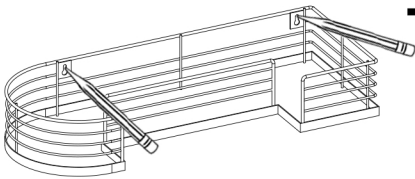


×6

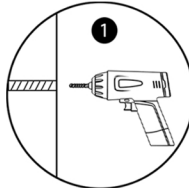


×6

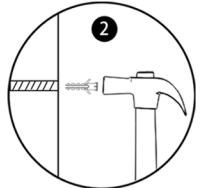
step1



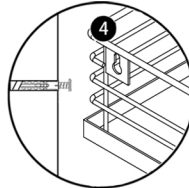
Mark the location where you want to install the shelf.



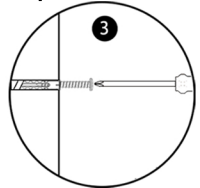
Drill the holes



Punch the expansion nails

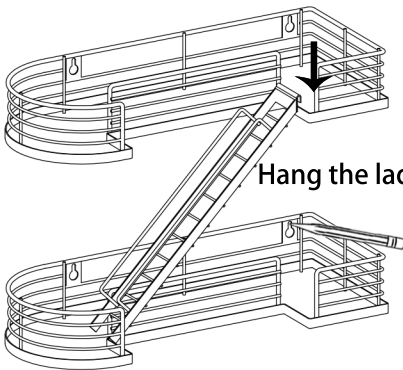


Hang the shelf



Screw in the screws

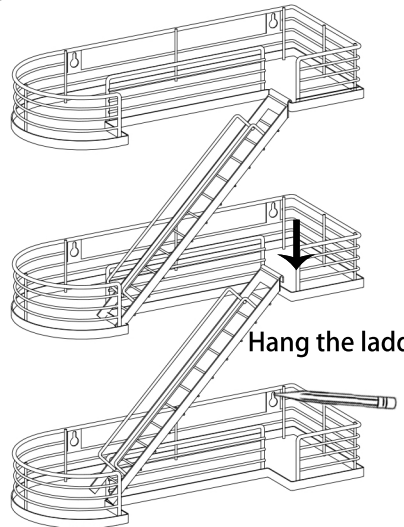
step2



Hang the ladder.

Step 2 installation method is the same as step 1.

step3



Hang the ladder.

Step 3 installation method is the same as step 1.