

OWNER'S MANUAL

Swivel Rocker Recliner



MODEL: C500

1. ASSEMBLE GUIDE

Thank you very much for choosing our product!

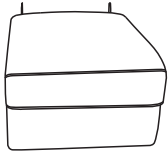
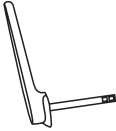

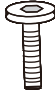


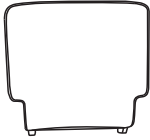


Please take the time to read these instructions carefully and follow each step carefully for safe and easy operation. Please keep this manual in a safe place for future reference, especially for safety information.

For ease of installation, it is best for you to assemble the chair with two people.

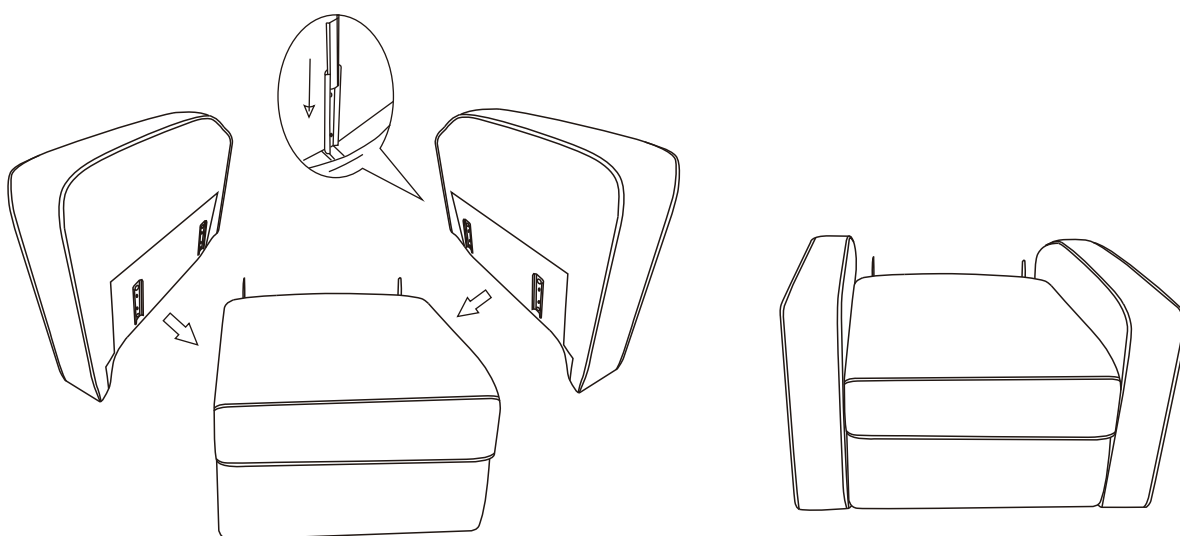
Please read and understand this manual before assembly. Before you start assembling the product, please make sure that all parts are complete.

Should any parts be missing, damaged or if you have any queries, please do not hesitate to contact us.

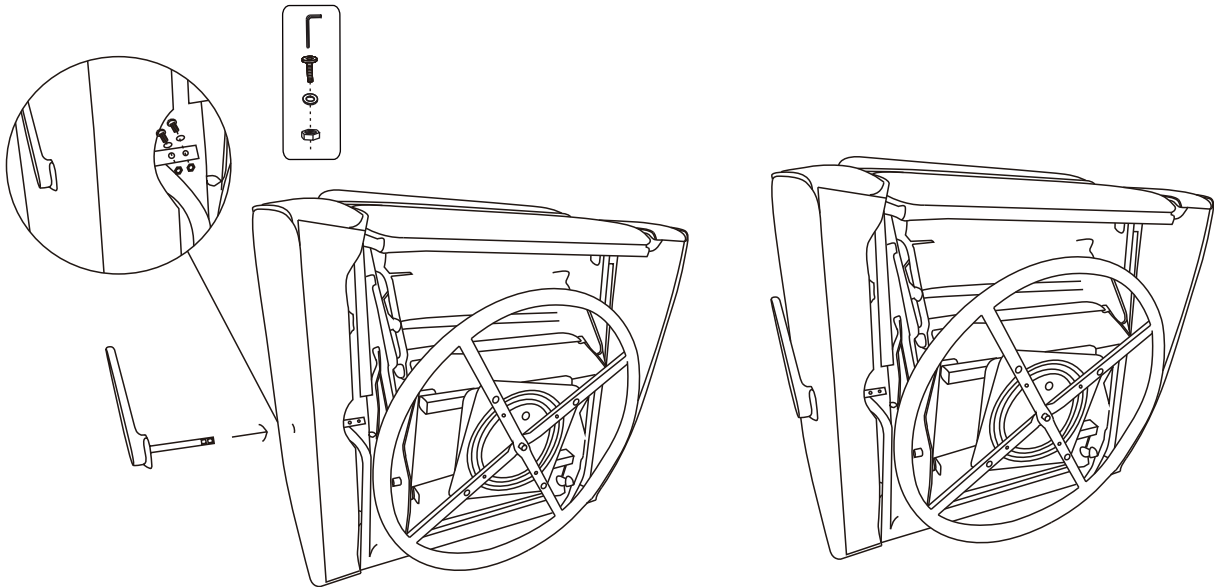
2. PARTS LIST

BOX 1						
Part	A	B	C	D	E	F
Description						
Qty	1PC	1PC	1PC	2PC	2PC	2PC
BOX 2						
Part	G	H		I		
Description						
Qty	1PC	1PC		1PC		

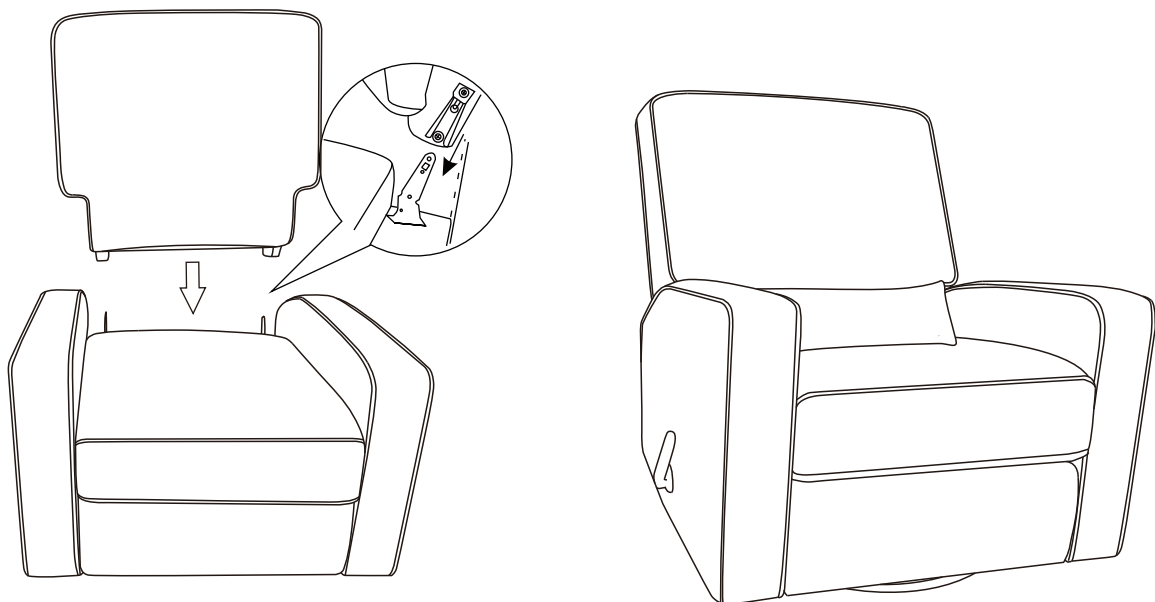
3. ASSEMBLY STEPS



Step 1: Align the two side slots and install the Armrest.

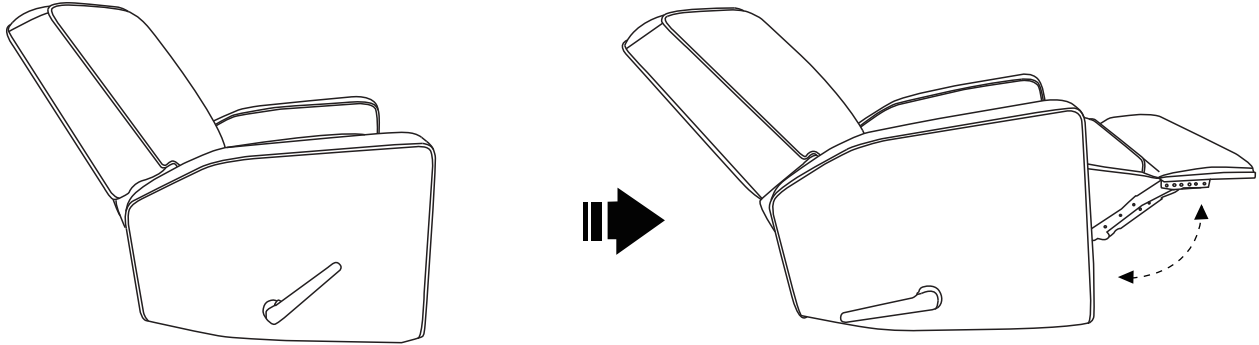


Step2: During the installation process, please note that the person must be facing the base. Align the hand lever with the holes and insert it directly into the base, ensuring that the two screws with the two nuts on the holes of the hand lever are tightened.

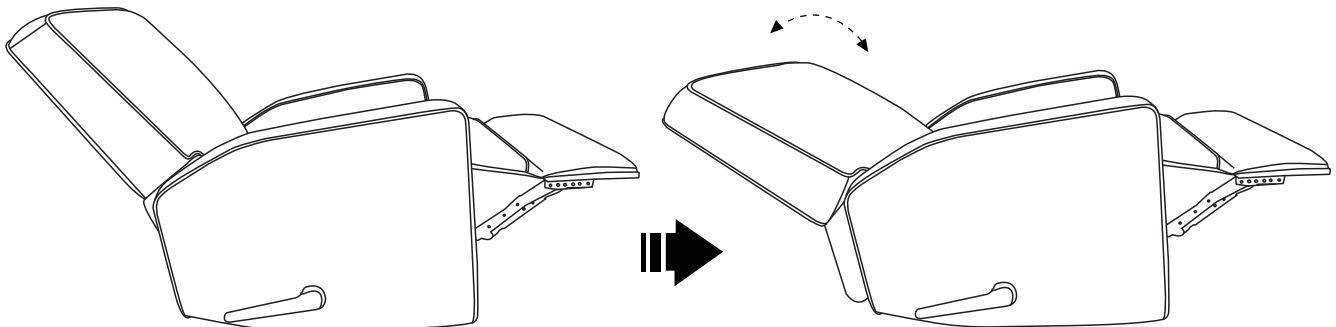


Step3: Align the back to the seat base through the slots then to press down backrest, until hear a "click", then check that the backrest is no longer shaking and will not be pulled out.

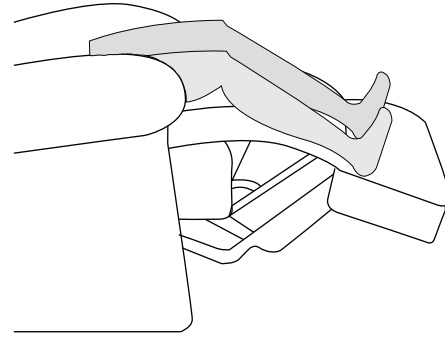
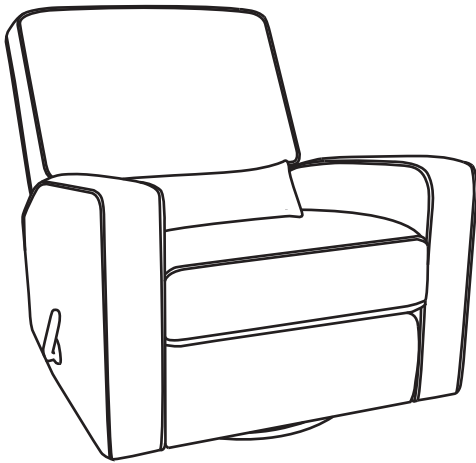
4. Operating Instructions



Step1: Flip the side handle to open the footrest for using.



Step2: The backrest is easy to recline to push by your back. And when you sit up, the backrest return to the initial position too.



Step3: Use your heel against the low part of the footrest to close down, and after hearing a "click" to lock footrest. If your meet some problem not to close the footrest, please ask your friends and family to help you.

5. PRODUCT CARE

- Dust regularly with a soft,dry cloth to prevent soil build-up.Keep away from heat to avoid glazing,melting or scorching.Use a professional cleaning service to clean the fabric.

6. WARNING

- Proper assembly of this item requires 2 people.
- This product is not intended for institutional or commercial use.
- Read all instructions before assembling this product.
- FALL HAZARD - To prevent death or serious injury, always keep child within arm's reach.
- Avoid placing this item in direct sunlight to prevent fading.
- Check this product for damaged hardware, loose joints, missing parts or sharp edges before and after assembly and frequently during use.