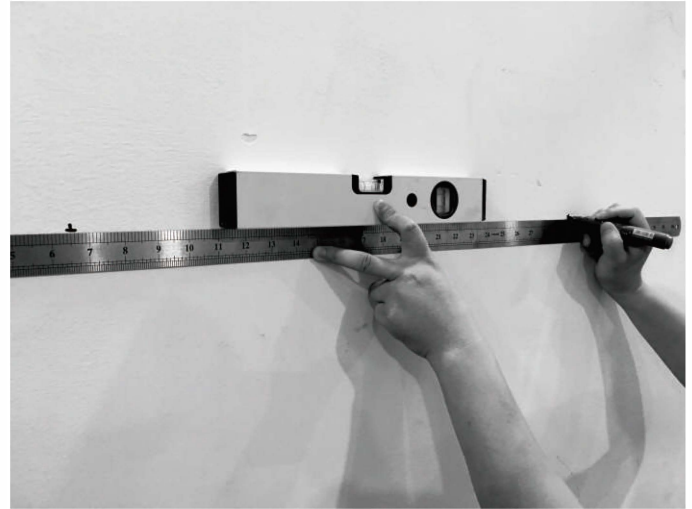


INSTALLATION & WIRING PROCESSING



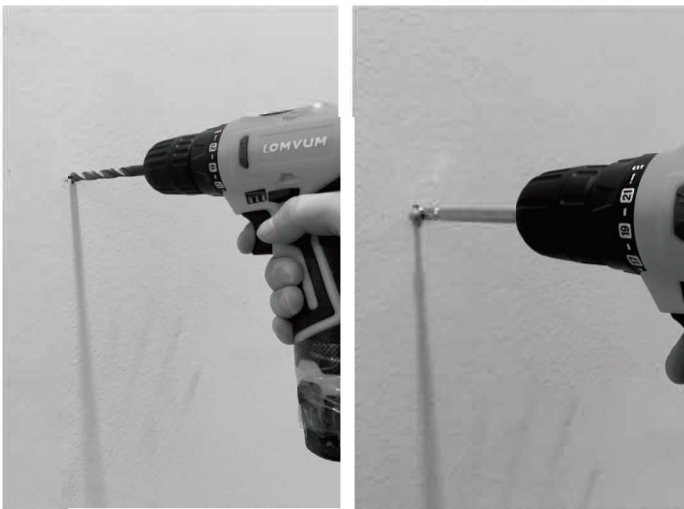
Step I.

Open the package, read the **INSTALLATION MANUAL & CUSTOMER SERVICE INSTRUCTION** firstly.
Carefully hold the mirror up from the package, and always place the mirror on a soft surface e.g. carpet or folded towels.
DO NOT touch the frosted glass strips on the back of the mirror.
DO NOT remove protective film or corner protectors until the mirror is completely installed.



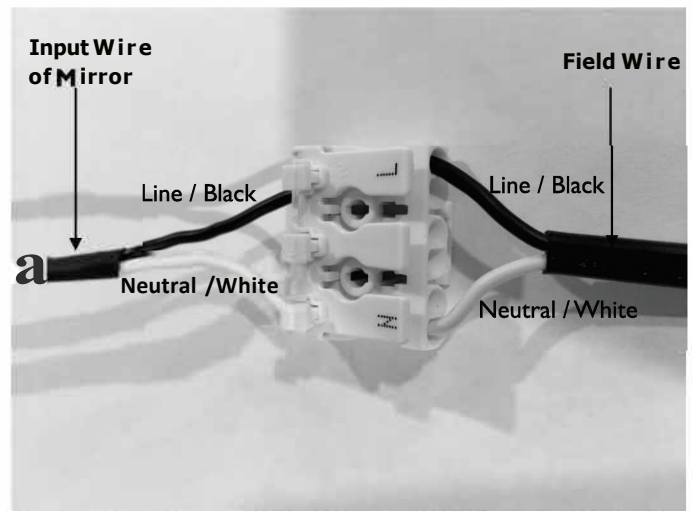
Step 11.

Measure the distances between two hanging holes on the back of mirror, and mark the drilling locations onto the wall according to your plan.
Please ensure that all marked mounting points accurately match up with the fixing points on the mirror.
Before drilling, ensure there are no hidden cables or pipes behind the mounting points.



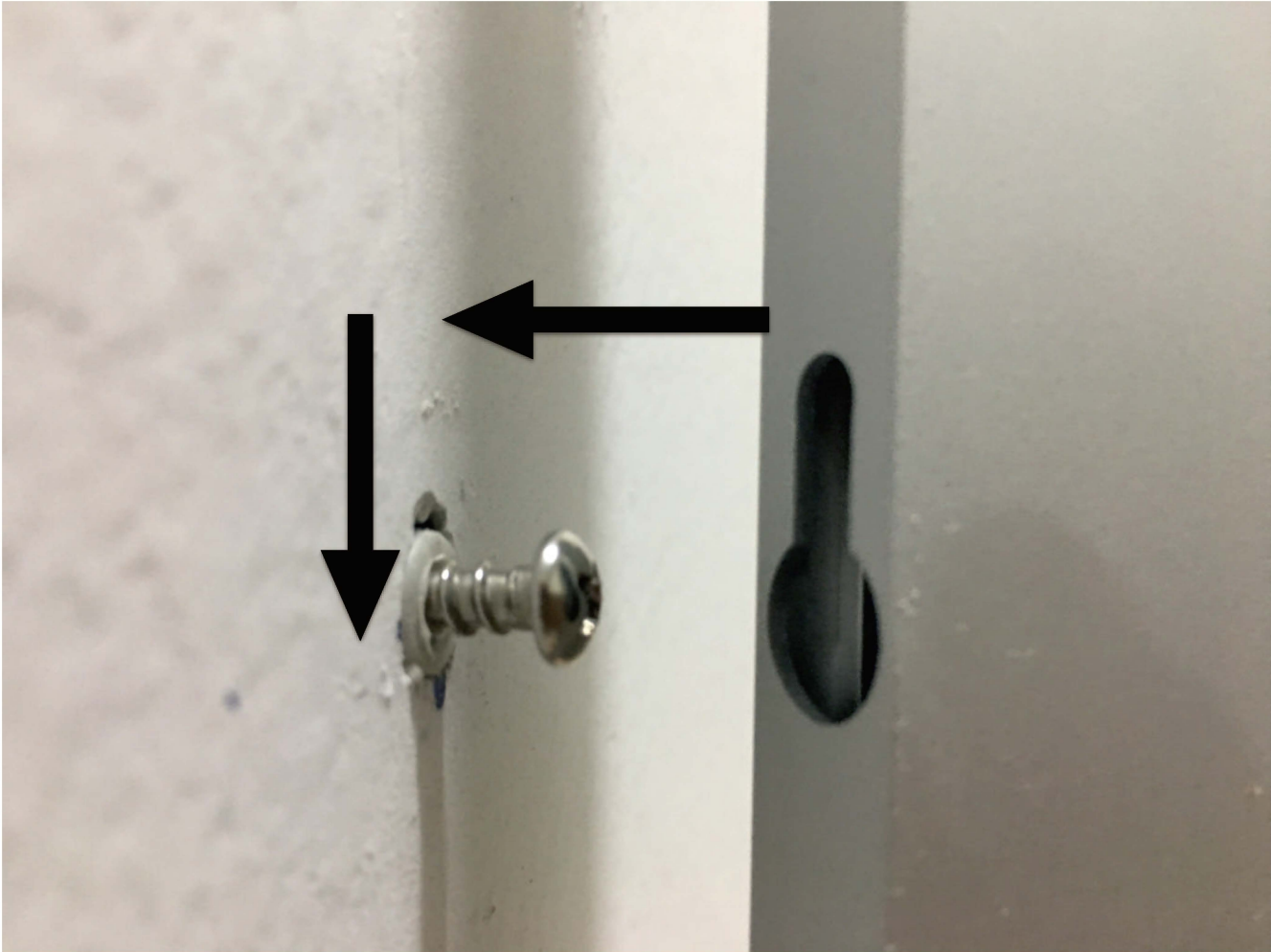
Step III.

Drill holes in the marked positions to a suitable depth.
Insert wall plugs and screws provided.



Step IV.

Find the input cable with terminal block equipped on the end.
Make connections with filed wire, Neutral to white and Line to black. This mirror was designed and produced according to **CLASS I** level (Double Insulation), no need ground wire connection. Just insert ground wire (green) if you have into the central hole of the terminal block.
Ensure all connection are tight in place.



StepV.

Carefully hold the mirror and mount it onto the screws fitted to the wall. Ensure mirror is securely mounted.

Also you can scan this QR code to watch the video of
INSTALLATION TUTORIAL on YouTube.com

LED Bathroom Mirror Installation

