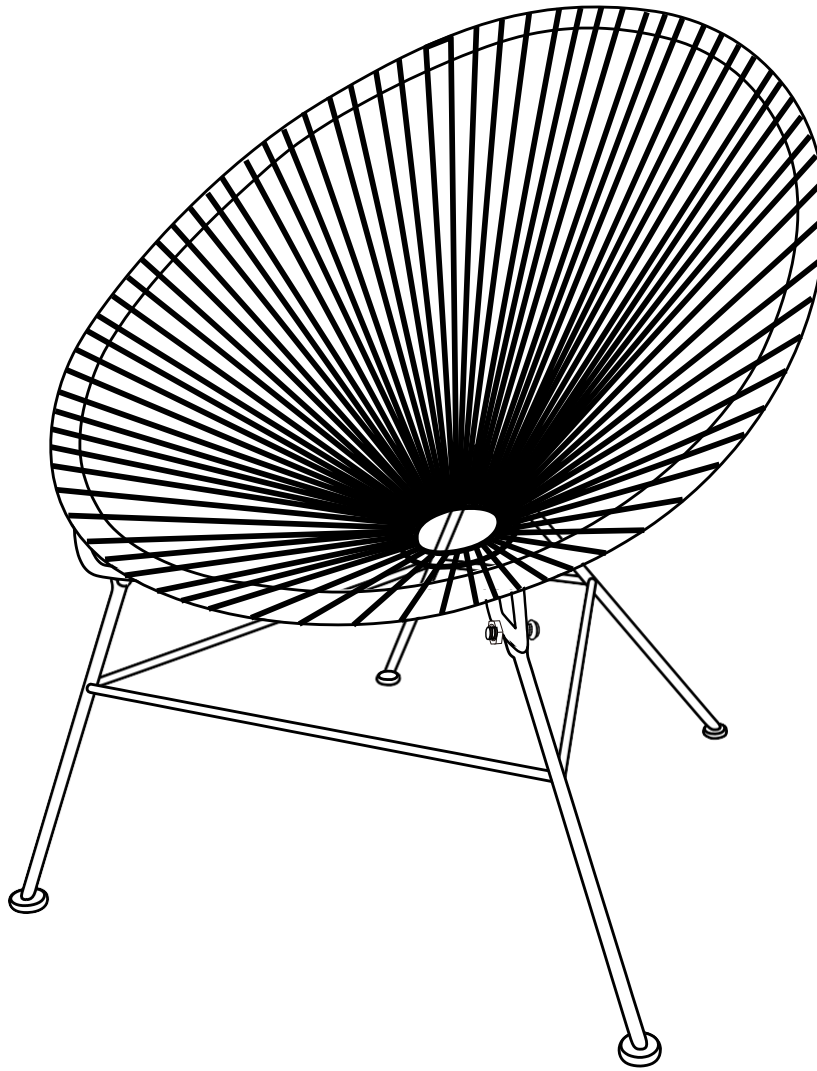


Accent Chair



Note:

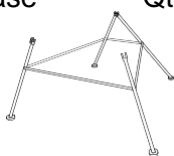
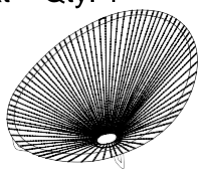
- Wait to dispose of the packing material until assembly is complete and all parts and hardware are accounted for. Sometimes a hardware bag can be tricky to find.
- Two people might be required for assembly.
- Find a clean, smooth area on which to work, such as a carpet, in order to avoid scratching the parts.

If you have questions regarding this product, call
and ask for our product specialists, or e-mail
See many more products on the Internet!

Made in China

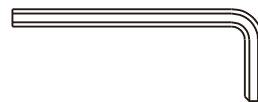
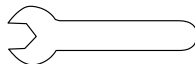
Parts List:

A. Seat Qty: 1	B. Base Qty: 1
----------------	----------------



Hardware List:

C. Screw and Hex Nut Qty: 3	D. Wrench Qty: 1	E. Hex Wrench Qty: 1
-----------------------------	------------------	----------------------



To assemble:

Set the Seat (A) on the Base (B) as shown.

Align the holes of the Base and Seat, and use the Screws and Hex Nuts (C) to loosely connect these parts.

After all three places are connected, use the Wrenches to fully tighten all fasteners.

