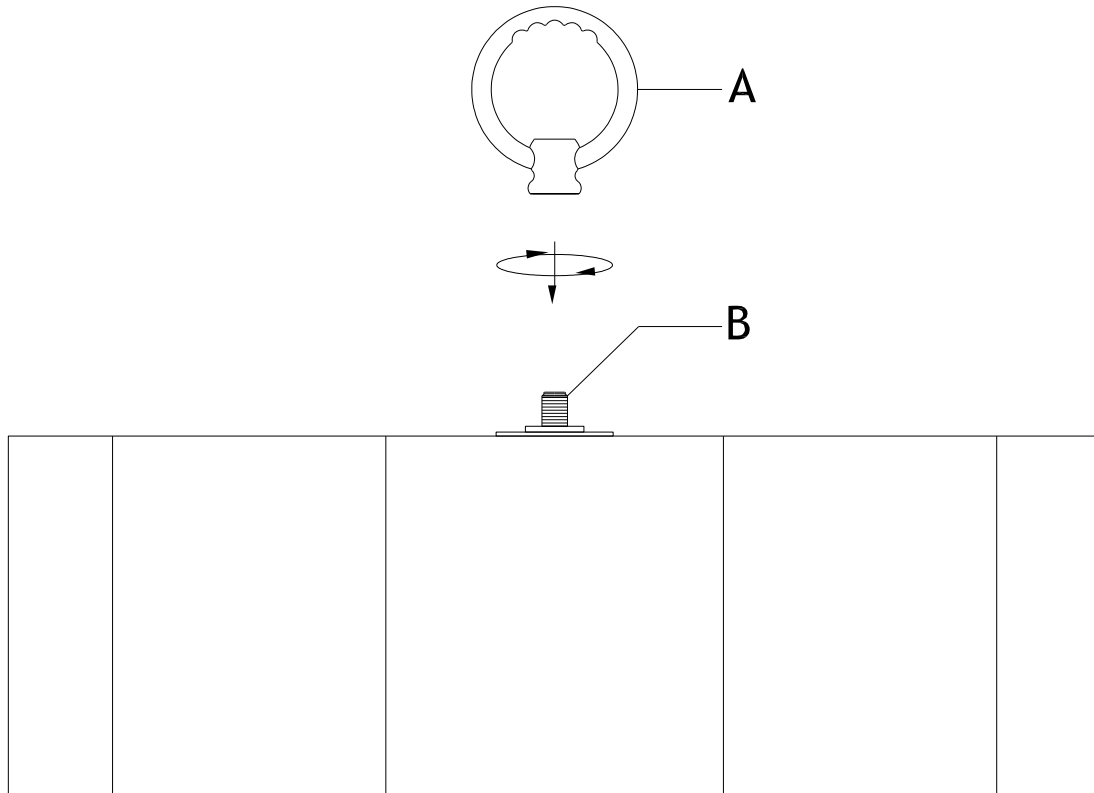


ASSEMBLY INSTRUCTIONS



ASSEMBLY STEPS:

A → B

1. Carefully unpack and identify all parts referring to illustration for parts identification.
2. Turn the power to the installation point OFF.
3. Install the loop (A) into the nipple of the top assembly (B).
4. Install proper bulbs (not provided) to the sockets referring to the marking and/or labels on the fixture for maximum wattage.
5. Restore the power to the installation point ON.
6. Assembly is completely. Retain this sheet for future reference.