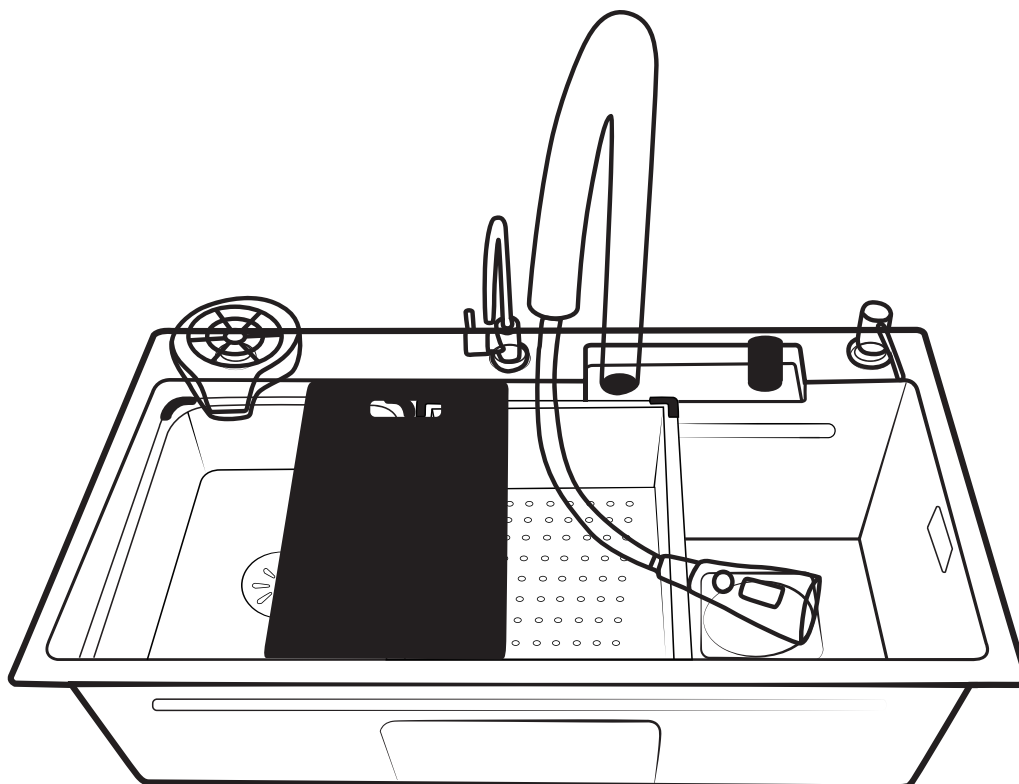


# INSTALLATION INSTRUCTIONS

DeerValley®

## Stainless Steel Kitchen Sink Set





## Prior to Installation:

- Inspect the sink prior to installation to ensure it has not been damaged during shipping.
- Thoroughly flush the water supply pipe to remove impurities.
- Adhere to all plumbing and building codes as required by your state.
- Maximum working pressure: 0.5 MPa (5 bar). If the pressure exceeds this limit, it is essential to install a pressure relief valve. The highest working and ambient temperature for the faucet spray head is 60°C. Please ensure that the faucet spray head and the hose connected to it are kept away from heaters to prevent potential damage to the faucet and its seals, and to ensure the safety of users.
- It's essential that a qualified professional follows the installation steps outlined in this manual.

### General Recommendations:

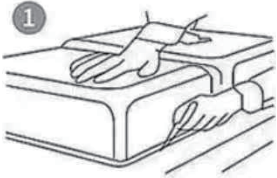
Verify the presence of all necessary parts. Please contact us immediately if any part is missing or damaged. The manual contains crucial information on installation, maintenance, and cleaning. Ensure users have access to this information for reference.

**If you have any questions or concerns  
please contact us:**

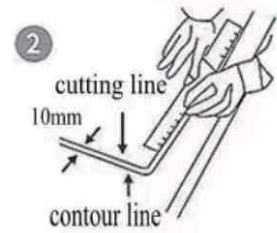
(+1) 312-626-9466  
service@deervalleybath.com

### STEP-BY-STEP INSTALLATION

#### Sink Installation



(1) Place the sink upside down on the worktop in the desired position, ensuring the cabinet framework will clear all parts of the sink. Using a soft, sharp pencil, carefully trace around the sink as accurately as possible. Once traced, remove the sink.



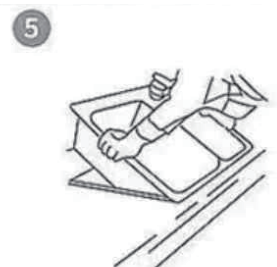
(2) Inside the traced outline, draw a line 10mm (0.4 inches) inward. This line marks the cutting boundary for creating the opening.



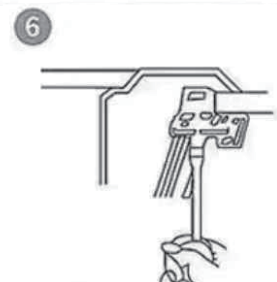
(3) Carefully cut along the marked cutting line using a suitable cutting tool. After cutting, smooth the edges of the cut with sandpaper to ensure a clean finish.



(4) Fill any gaps between the sink and the countertop with clear silicone sealant, maintaining a width of 3.2-6.4mm (0.1-0.25 inches) for a secure seal.



(5) After installing the kitchen faucet, slowly lower the sink back into place. Ensure it fits tightly against the countertop and covers the silicone sealant completely.

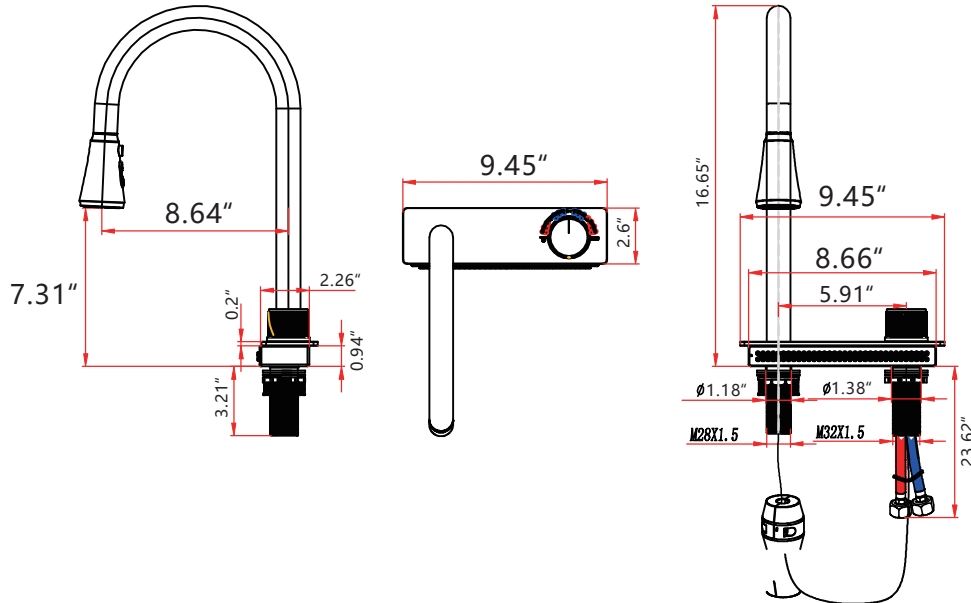


(6) After placing the sink, verify its alignment. Use silicone sealant or fasteners to secure the connection and prevent water leaks.

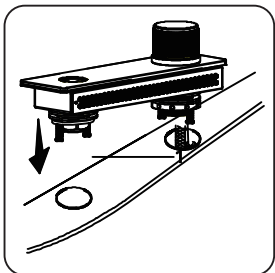
NOTE: Drawings may not accurately depict product contours.

## Faucet Installation

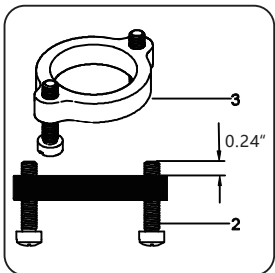
### ● Product Dimensions



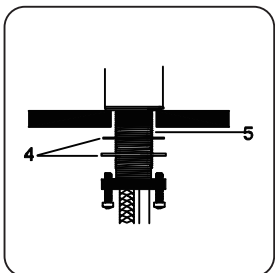
### ● Installation Steps



(1) Begin by ensuring the mounting washer (1) is oriented with the rubber ring facing downwards. Place the handle (knob) on the right side.

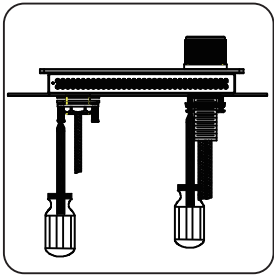


(2) Insert and screw the screws (2) into the mounting ring (3) until they protrude by 6mm (2.4 in).

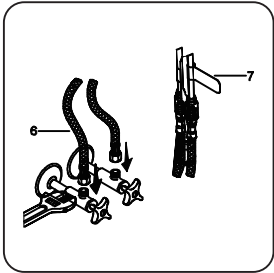


(3) Arrange the gaskets (4) onto the base of the faucet body (5), then proceed to rotate the installation ring into place.

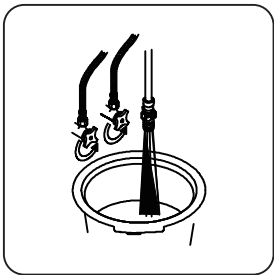
NOTE: Drawings may not accurately depict product contours.



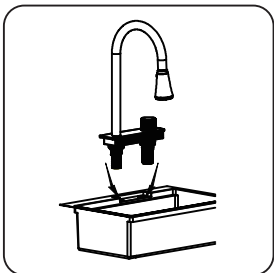
(4) Adjust the screw positions on the mounting ring as needed, and securely tighten them.



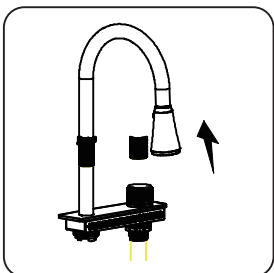
(5) Connect and secure the hose (6) to the water source, ensuring to connect the hose labeled "COLD" (7) to the cold water supply.



(6) Turn on both hot and cold water and allow them to run for about a minute.

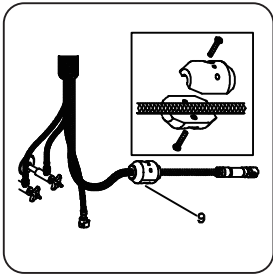


(7) Insert the main body of the faucet into the sink slot, following the direction indicated by the arrow.

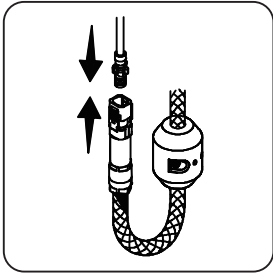


(8) Pull down the faucet spray head and check for smooth operation.

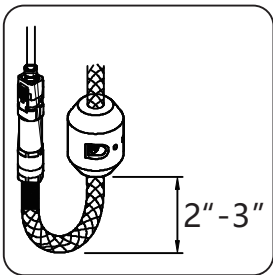
NOTE: Drawings may not accurately depict product contours.



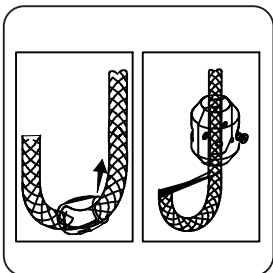
(9) Loosely install the heavy hammer (9) onto the faucet hose (8).



(10) Connect the faucet hose to the faucet.



(11) Adjust the weight to the correct position as shown, then lock it in place securely.



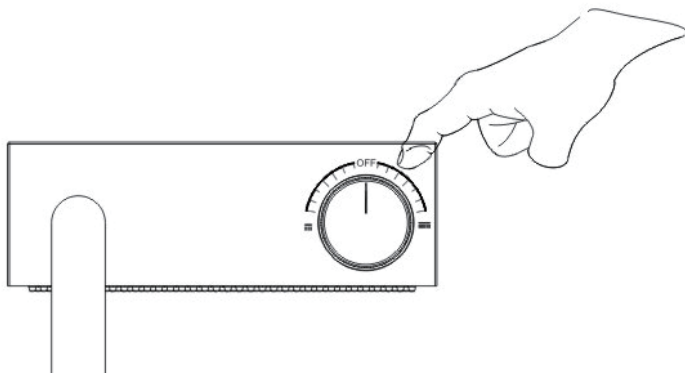
(12) If necessary, fine-tune the position of the weight until it is in the correct location.

### Verify Installation Results

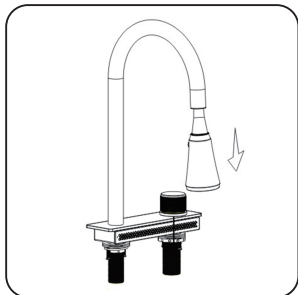
Inspect all joints to ensure they are securely tightened. Additionally, confirm that the knob is in the closed position to prevent any potential leaks or water flow.

NOTE: Drawings may not accurately depict product contours.

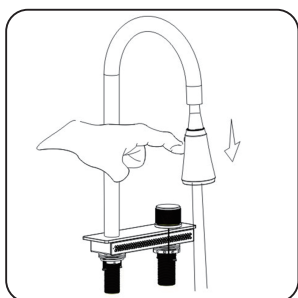
### Faucet Use Instructions



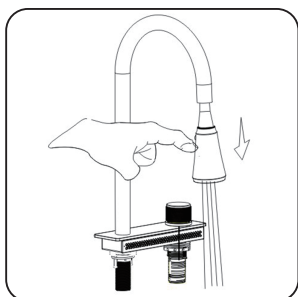
- Rotate the knob to the right to access cold water flow from the waterfall faucet. Continue turning for mixed water flow, then hot water flow. Return the knob to the middle position to turn the water off.
- Rotate the knob to the left to divert water through the pull-down faucet. Continue turning for cold water flow, mixed water flow, and hot water flow. Return the knob to the middle position to close the flow.



To use the extender, simply pull the head and move it freely.



Press the button to switch to the shower spray mode.



Press the button again to switch to the aerated water mode.

NOTE: Drawings may not accurately depict product contours.

## CARE AND MAINTENANCE

### ● Use and Maintenance of the Sink

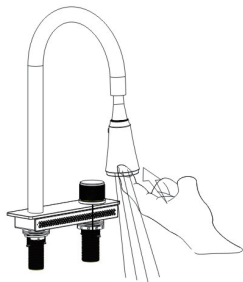
- (1) When handling and installing the sink, please exercise caution to prevent collisions, which could lead to scratches on the basin surface or deformation of the basin body.
- (2) Our sinks are crafted from high-quality stainless steel, offering excellent corrosion resistance. However, improper use and maintenance may result in surface rust and rust spots.
- (3) After kitchen renovations, it's crucial to promptly remove any residue from the sink's surface, including welding debris, cement, oil, and other impurities, to prevent rust and mildew.
- (4) In areas with poor water quality, where water contains high levels of iron and other metals due to galvanized pipes, failure to clean residual water stains in a timely manner can lead to "floating rust" on the sink's surface over time.
- (5) Rust spots may also appear due to dust containing minerals or acidic or alkaline substances settling on the sink's surface in newly decorated houses, especially when exposed to moisture.
- (6) Prolonged exposure to chemical agents, cleaning agents, paints, sauces, and oil residue in the sink can result in mold accumulation on the sink's surface. Regular cleaning is essential to prevent this.

### ● Prevention and Treatment of Sink Issues

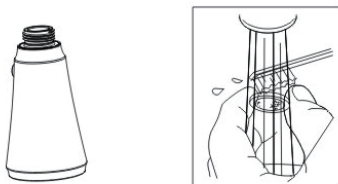
- (1) During kitchen renovations, it's advisable to install the sink last. Before installation, drain any residual water from the pipes to prevent contamination.
- (2) After installation, thoroughly rinse the sink to remove any debris or residues.
- (3) Clean the sink after each use to prevent the accumulation of dirt and water stains.
- (4) Avoid leaving kitchen knives, bottle openers, or other items in the sink for extended periods. Refrain from scrubbing the sink with a steel wire ball or cutting items directly on its surface.
- (5) If floating rust or rust spots appear on the sink, apply toothpaste to the affected areas, then scrub with a dishcloth until clean.

### ● Faucet Maintenance

- (1) Turn on the faucet and rub the nozzle to remove impurities.



- (2) If water flow is reduced due to impurities, remove the shower head aerator, clean any accumulated debris, and securely reinstall it.



NOTE: Drawings may not accurately depict product contours.

### ●Faucet Cleaning Instructions

To maintain the pristine condition of all processed surfaces, including faucets and their accessories, follow these steps:

- (1) Wash the coated surface with neutral soapy water.
- (2) Thoroughly wipe the entire surface with a clean, soft cloth.
- (3) Avoid using detergents that may damage the plating surface, such as ammonia, detergent, and toilet cleaner.
- (4) Refrain from using abrasive cleaning appliances or detergents on faucets and their accessories.

## LIMITED WARRANTY COVERAGE

### 1 YEAR LIMITED WARRANTY

DeerValley products are made with quality materials and excellent craftsmanship to provide the customers a long-lasting product. In the case of any defects in materials or craftsmanship under regular use were inspected in the first one year of delivery, DeerValley will provide replacement parts at no charge, or at its option, replace any product or part of the product that is deemed defective, under normal installation, use, service and maintenance. This warranty applies only to the original purchaser. Proof of purchase will be required in the case of a claim. **SCRATCHES ARE NOT COVERED UNDER WARRANTY.**

The manufacturer warrants this product to be free of manufacture defects during the above mentioned warranty time. Please keep a copy of the original invoice as proof of purchase.

DeerValley will, as its option, (1) repair or replace the defective part(s) or product(s) at no charge; (2) issue a refund of the original purchase price of the product(s) (Valid within 30 days from the date of delivery); or (3) issue a credit to be applied toward the purchase of a new DeerValley product shipping/delivery charges may apply and are in DeerValley sole discretion.

DeerValley recommends the installations to be made by a licensed, professional plumber. DeerValley will not be held responsible for any damage or product failure due to improper installation, misuse, or failure to use a licensed professional. DeerValley is not responsible for any removal or installation cost.

This limited warranty shall not apply to goods which have been subject to accident, negligence, improper installation, product abuse, product misuse, or use of cleaners containing abrasives, alcohol or other organic solvents, whether performed by a contractor, service company, or yourself, are excluded from this warranty.

DeerValley responsibility under this limited warranty is limited to only to replacement parts and no other costs. DeerValley will not be responsible for labor charges and/or damage incurred by installation, repair or replacement, nor for any indirect incidental or consequential damages, losses, injury or costs of any nature relating to this product Except as provided by law, this limited warranty is in lieu of and excludes all other warranties, conditions, and guarantees, whether expressed or implied, statutory or otherwise, including without restriction those merchantability of fitness for use.

### RESPONSIBILITIES OF OTHERS

Inspecting the unit prior to installation is the responsibility of the installer or building contractor who acts on behalf of the user. They are responsible for ensuring the unit is free of defect or damage.

Notices are placed on and in the unit and on the shipping carton advising the installer of this responsibility.

In the event of a problem, the unit must not be installed. DeerValley is not responsible for failures or damage that could have been discovered, repaired, or avoided by proper inspection and testing prior to installation.

Damage occurring in transit is the responsibility of the carrier. The user or installer **MUST** open the crate and inspect the unit for damage when it is delivered. If damage is discovered, it must be reported immediately to the seller and the carrier in writing, and an inspection requested. Failure of the carrier to respond should be reported to the seller and the carrier. Your freight claims should be filed promptly thereafter.

### LIMITATIONS AND EXCLUSIONS

This warranty does not cover instances of negligence, misuse, abuse, improper installation, carelessness, accident, hard water or mineral deposits, exposure to corrosive materials, misapplication, damages caused by improper maintenance, alteration of the product, or failure to follow care or installation instructions enclosed with your product. The warranty becomes invalid if the DeerValley product undergoes any alterations or if attempts are made to carry out repairs using unauthorized accessories or parts from DeerValley.

DeerValley will not be liable for loss of use of the DeerValley products, inconvenience, or any other incidental or consequential costs, expense or damages. Please note that some states do not allow the exclusion or limitation of incidental damages.

### DISCLAIMER

Except as expressly provided, there shall be no warranty or obligation, express or implied, oral or statutory. No dealer or other person has the authority to make any warranties or representations concerning DeerValley or its products. In no event shall DeerValley be held responsible for any such warranties or representations.

### WARRANTY SERVICE

NOTE: When requesting warranty, be sure to have the following:

- Copy of original invoice
- Date of installation
- Description and pictures of defect
- Model number or description of model

To obtain warranty service and replacement part, please contact DeerValley Customer Service. DeerValley will determine whether to repair or replace your product, issue a refund, or issue a credit.