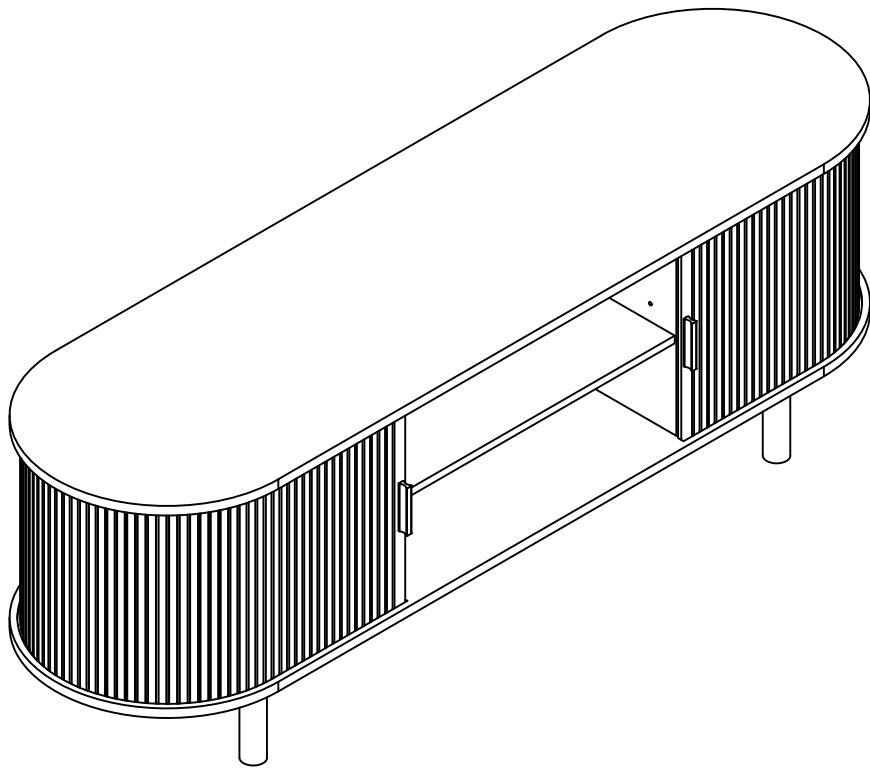


# Installation Instruction

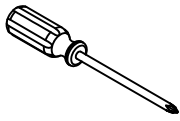


# Assembling

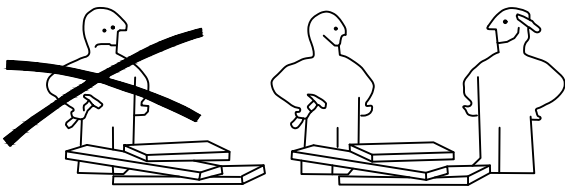
---

## What you need

- Use the packaging carton as a working surface to prevent product damage during assembly
- Phillips head screwdriver



## Weight Limitation

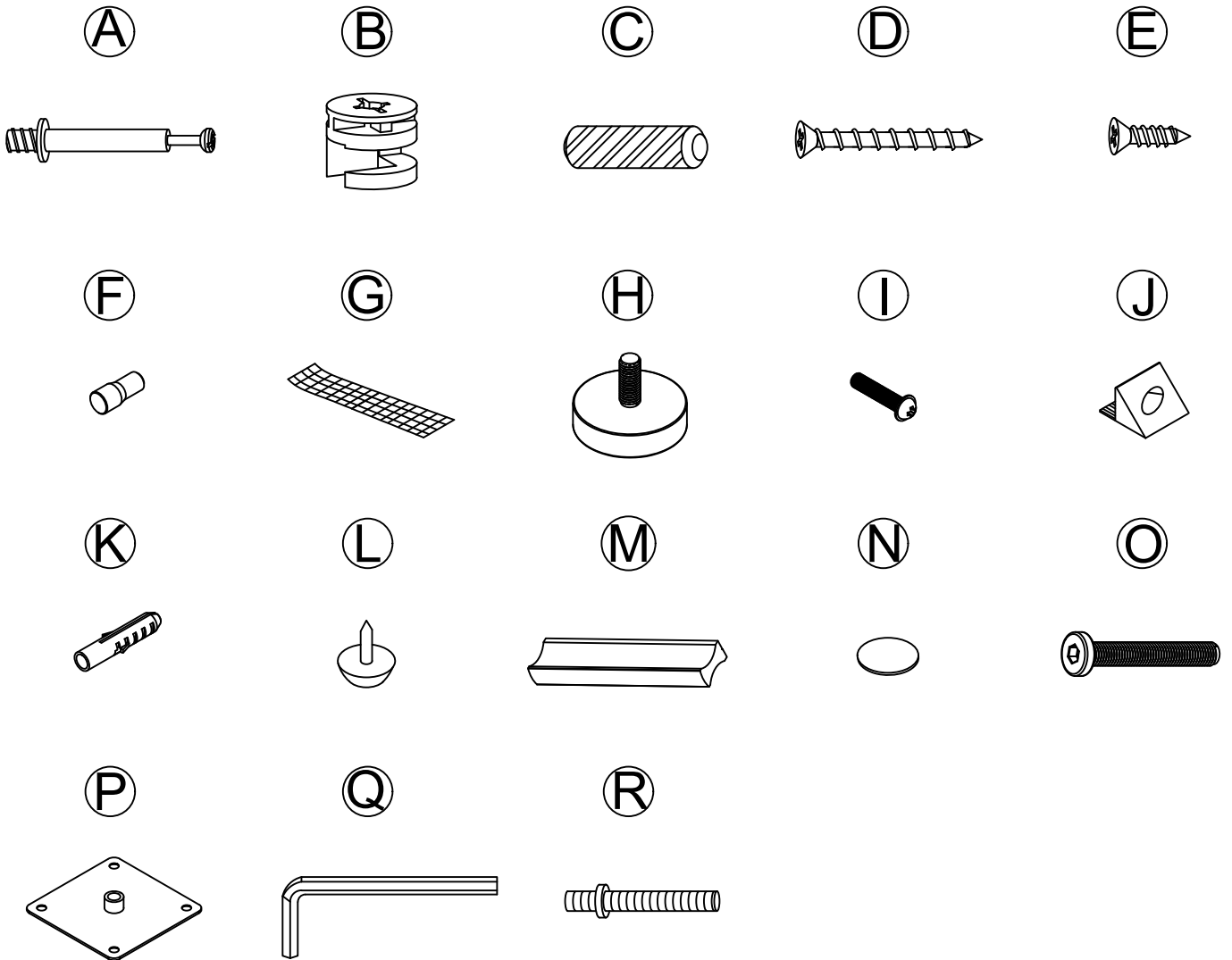


# What' included

---

Code	Description	Qty
A	Cam Bolt M6X35MM	16
B	Cam Lock 15X10MM	16
C	Wooden Dowel M8X30MM	14
D	Screw M4X40MM	6
E	Screw M3.5X14MM	24
F	Shelf Holder	4
G	Nylon Strap	2
H	Adjustable foot pads	1
I	Cam Bolt M4X8MM	4
J	The back button	6
K	Anchor	2
L	MATS	4
M	Metal shake handhandle	2
N	Self-adhesive hole sticker	16
O	The screw M6X40MM	6
P	The metal plate	4
Q	Wrench M4X55MM	1
R	The screw M6X35MM	2

# The Hardwares



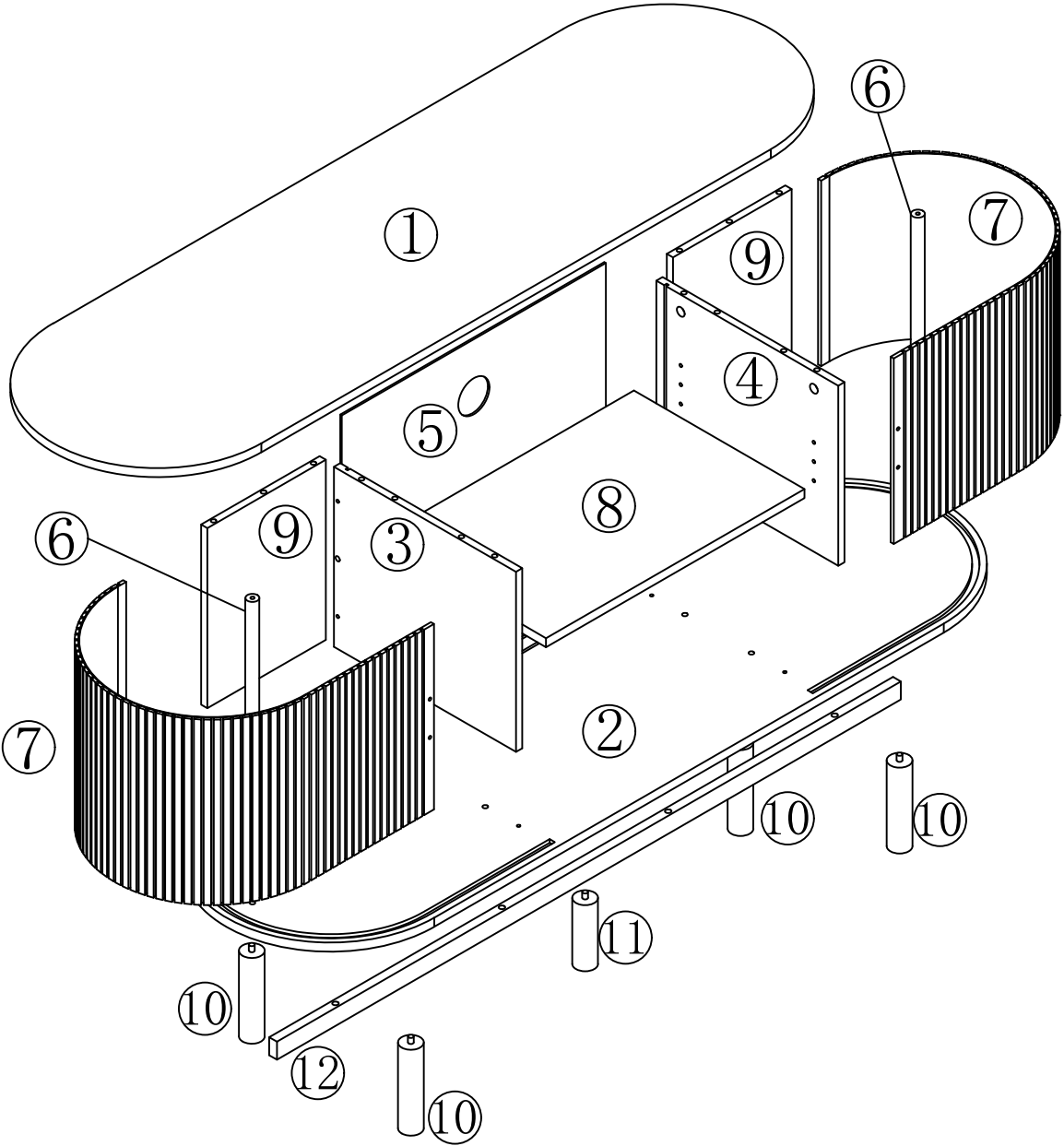
## IMPORTANT:

1. Do not tighten bolts / screws completely until all bolts / screws are lined up and inserted into holes.
2. Do not over tighten screws and bolts to avoid stripping
3. You can use a screwdriver. Power tools can also be used. Be careful with power tools

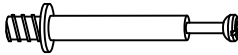
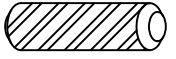
# Included Accessories

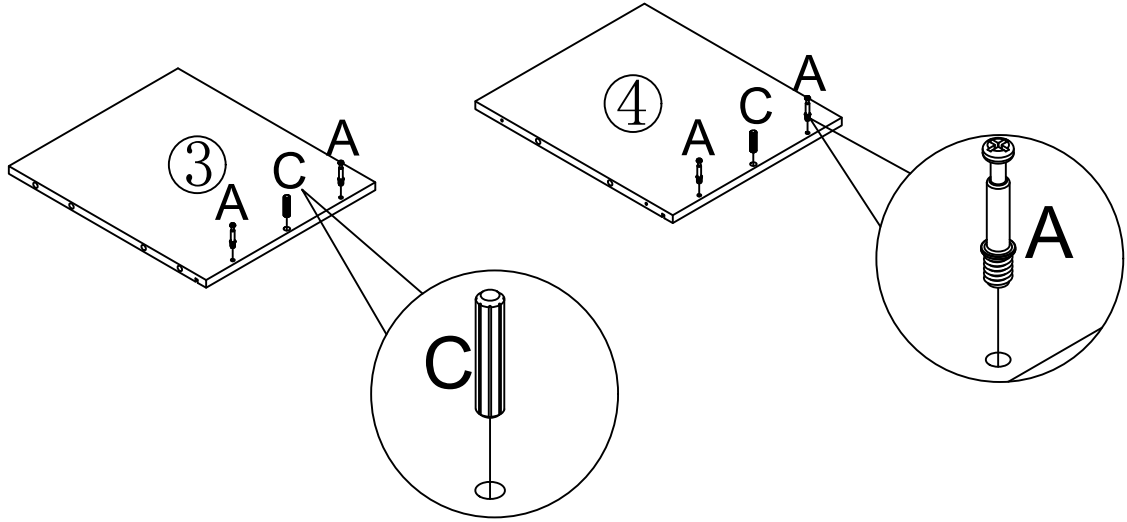
Code	Description	Qty
1	Cabinet Top	1
2	Bottom Panel	1
3	Left Side Panel	1
4	Right Side Panel	1
5	On the rear panell	1
6	Supporting metal round tube	2
7	Curved sliding door	2
8	Shelf	1
9	Back reinforcement plate	2
10	Solid wood feet	4
11	Medium solid wood feet	1
12	Base reinforced metal square pipe	1

# The Accessoriss





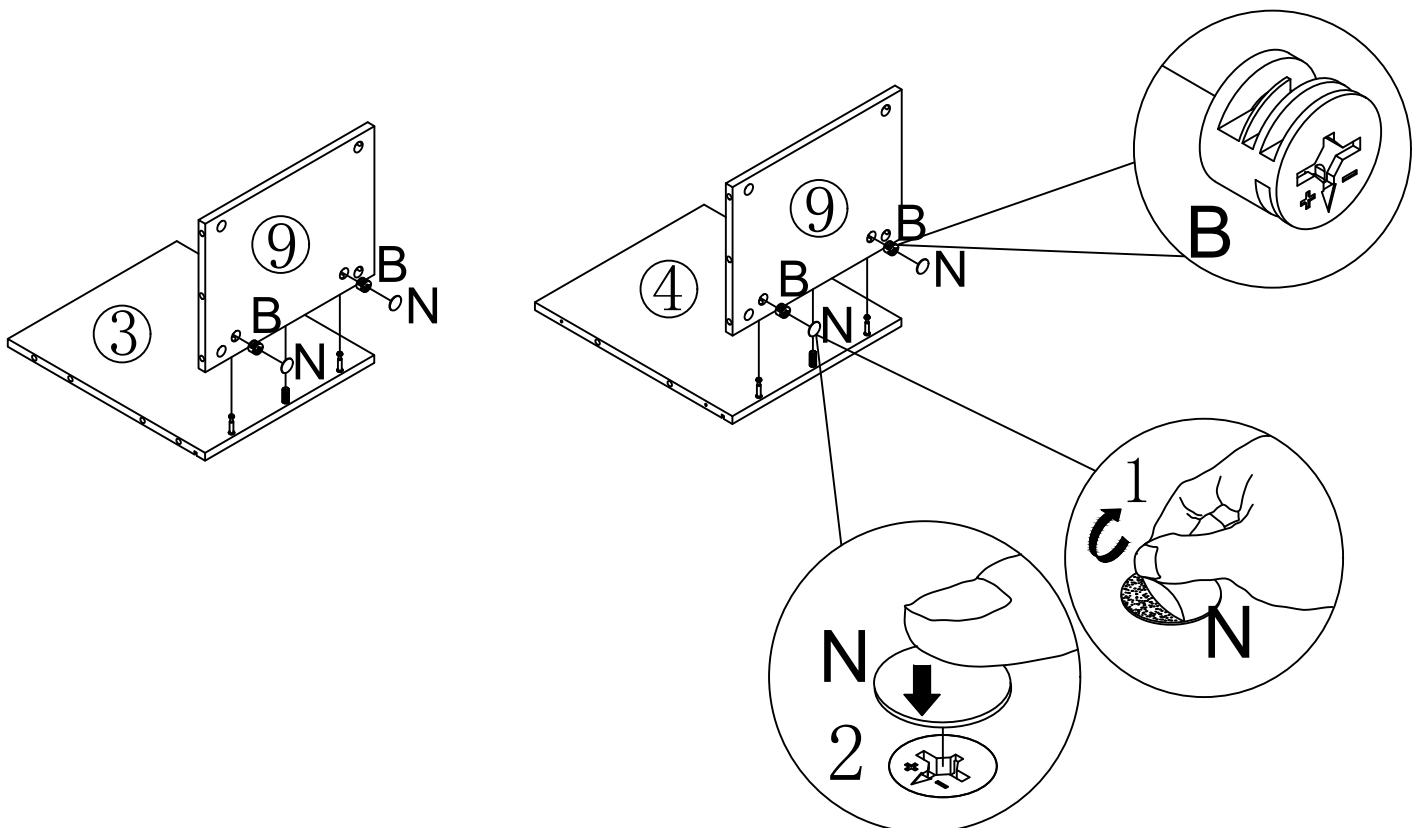
# Step 1

A	×4	C	×2
			

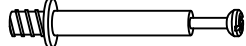

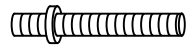


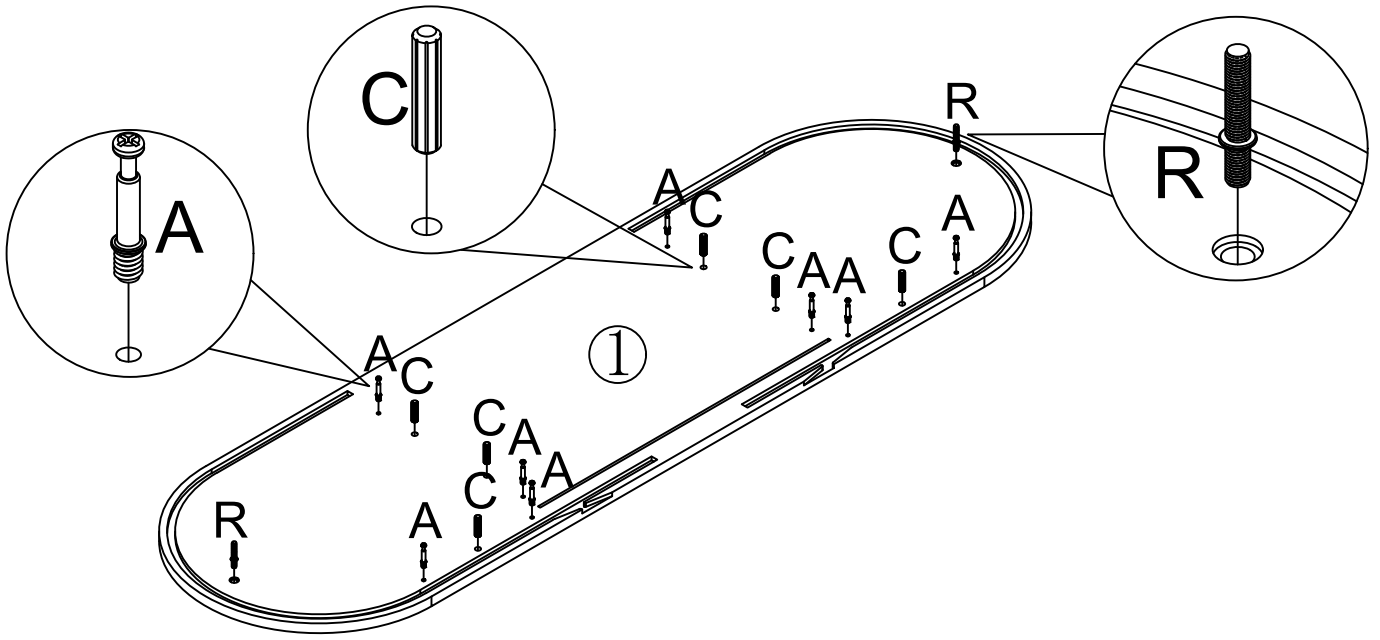
# Step 2

B	×4	N	×4
			





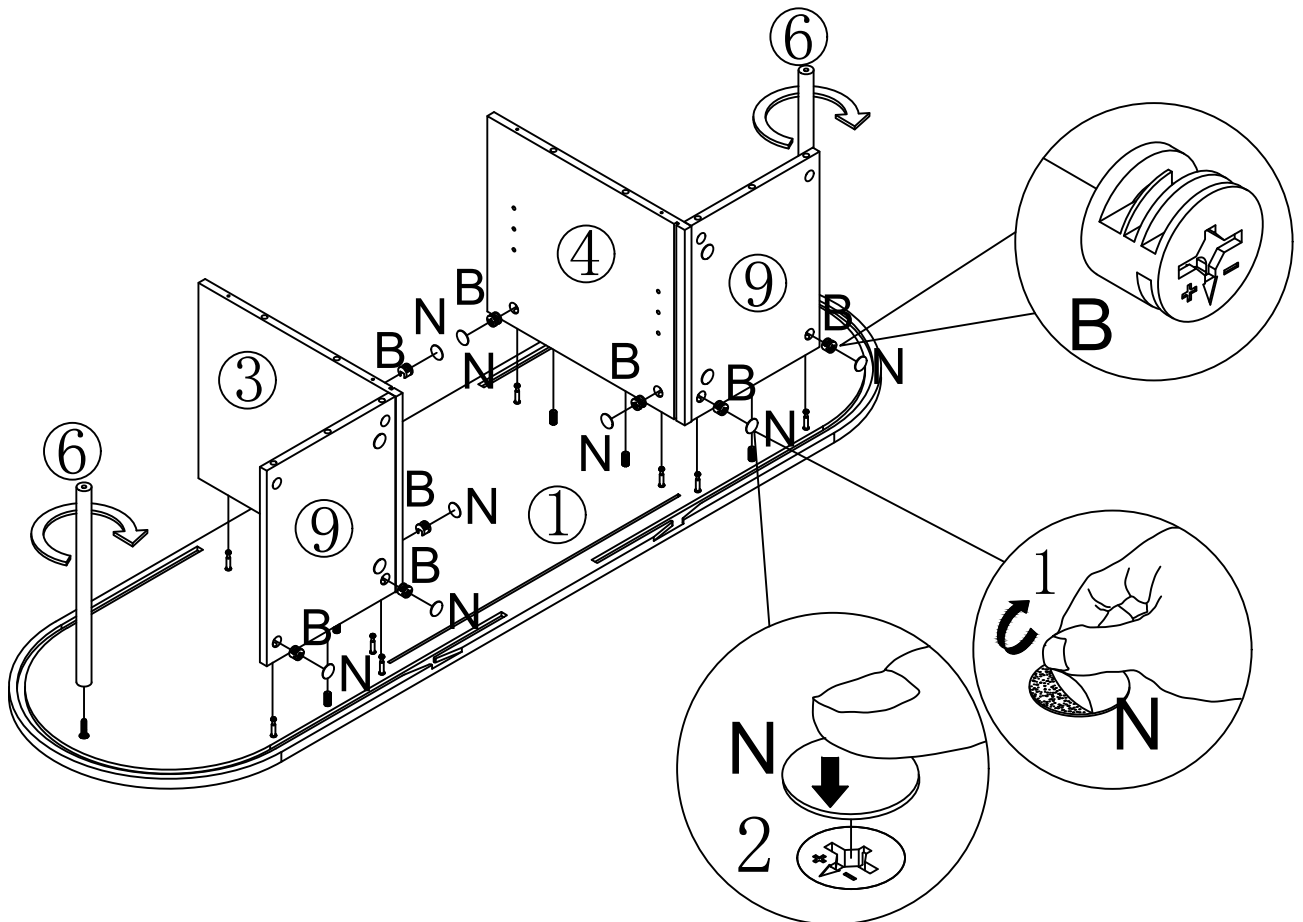
# Step 3

A	X8	C	X6	R	X2
					

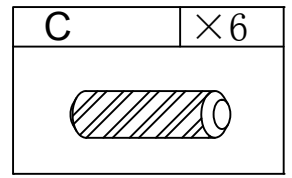
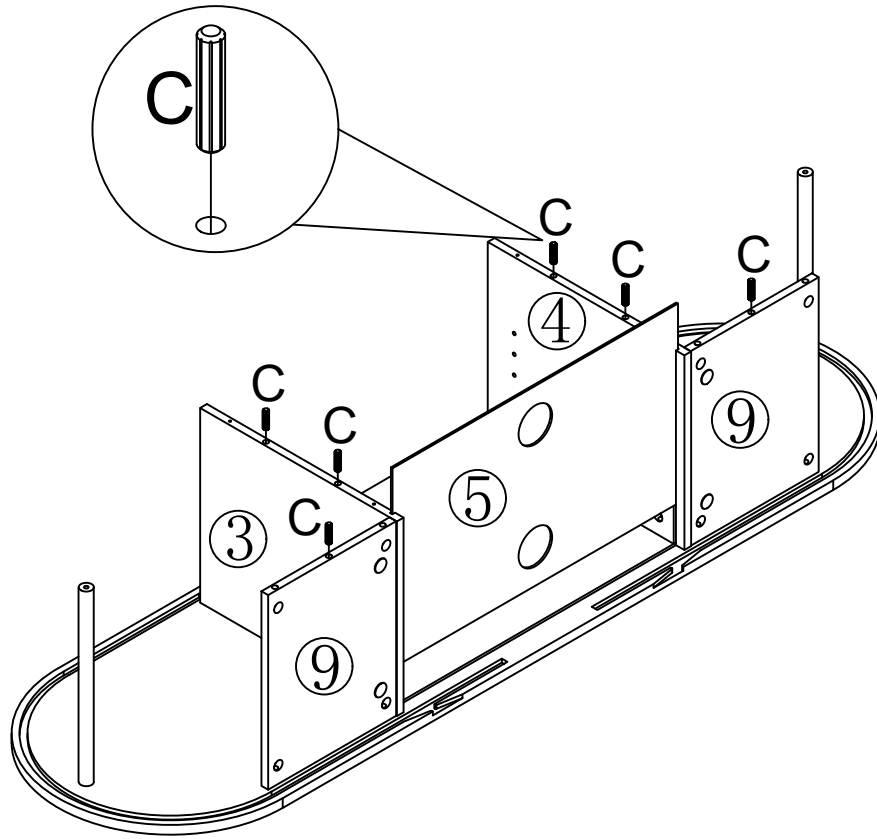


# Step 4

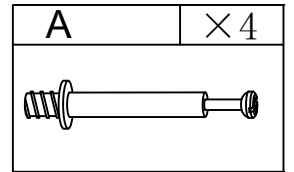
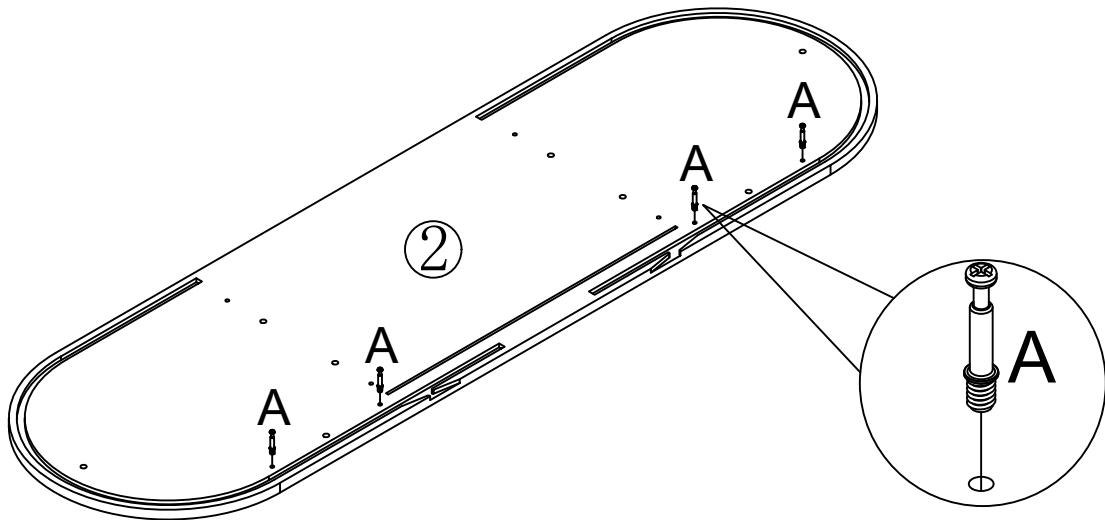
B	X8	N	X8
			



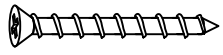


# Step 5

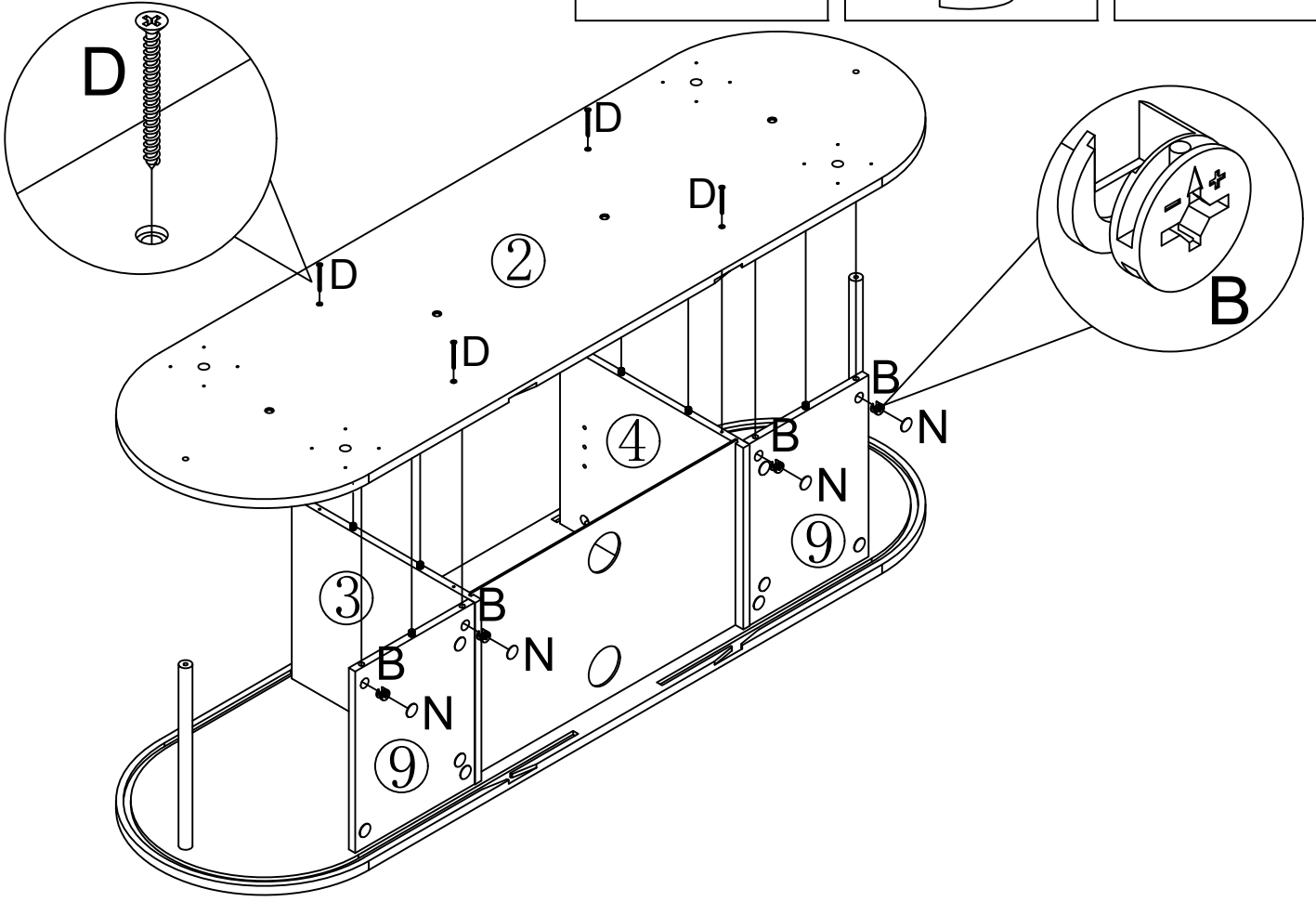


# Step 6


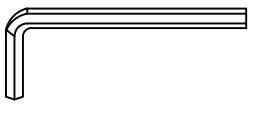


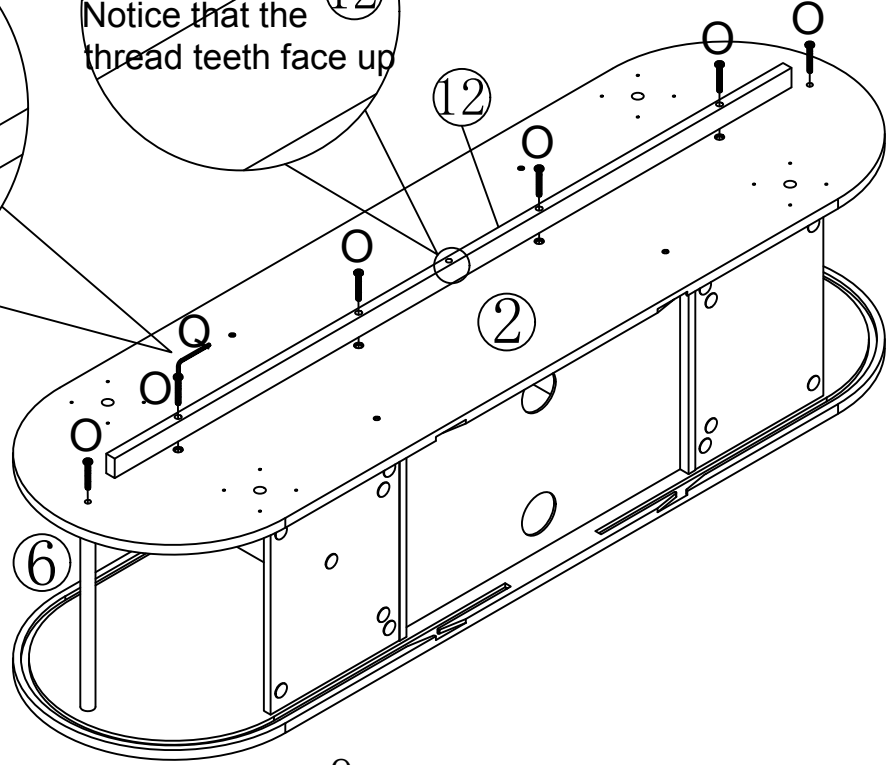
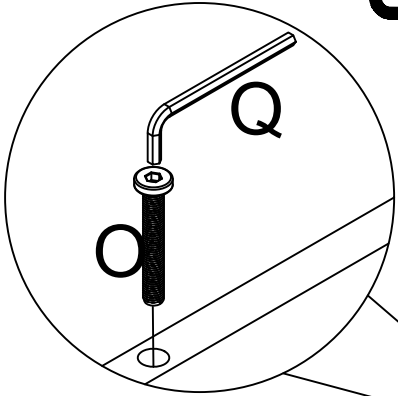
# Step 7

D	×4	B	×4	N	×4
					

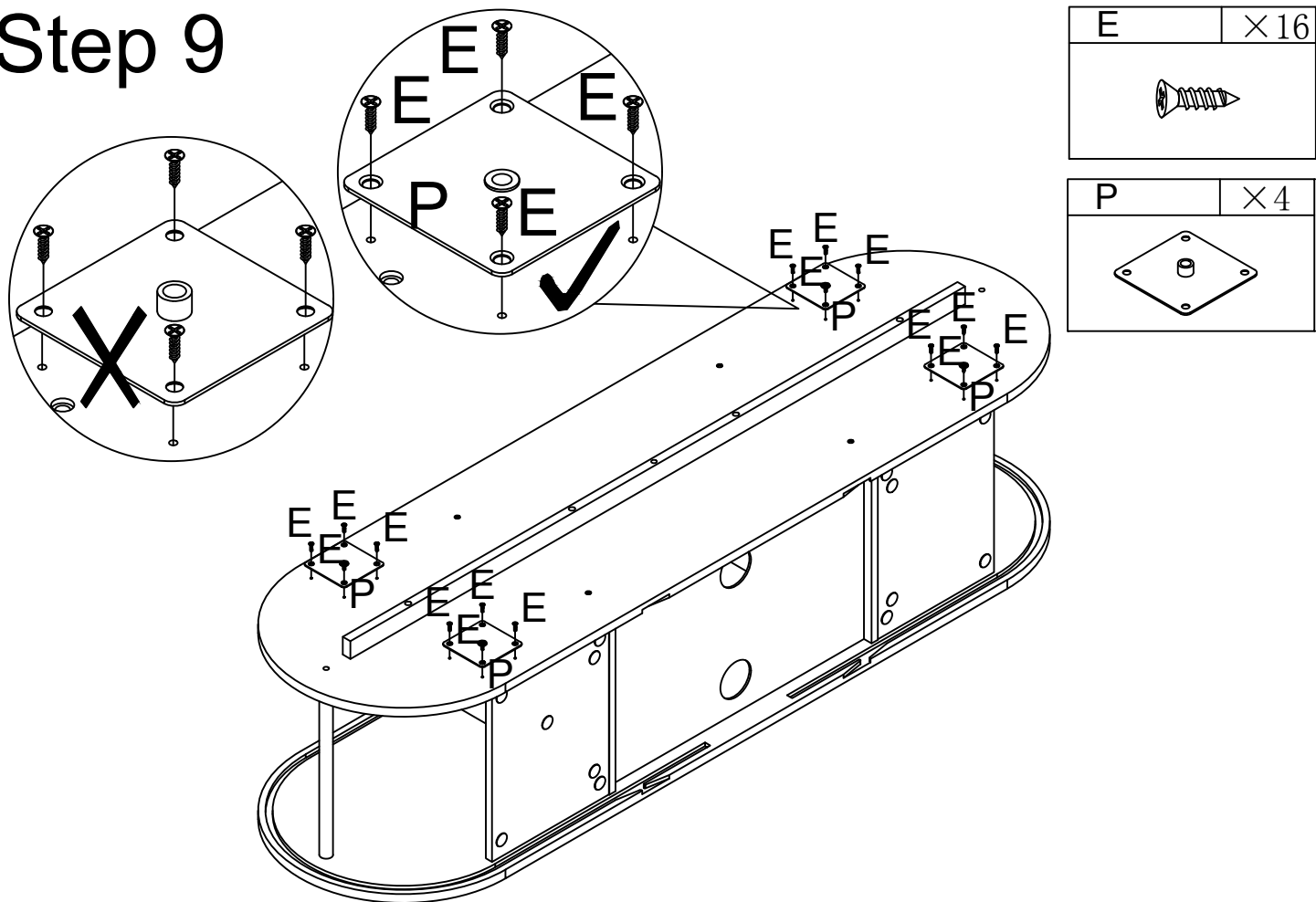


# Step 8

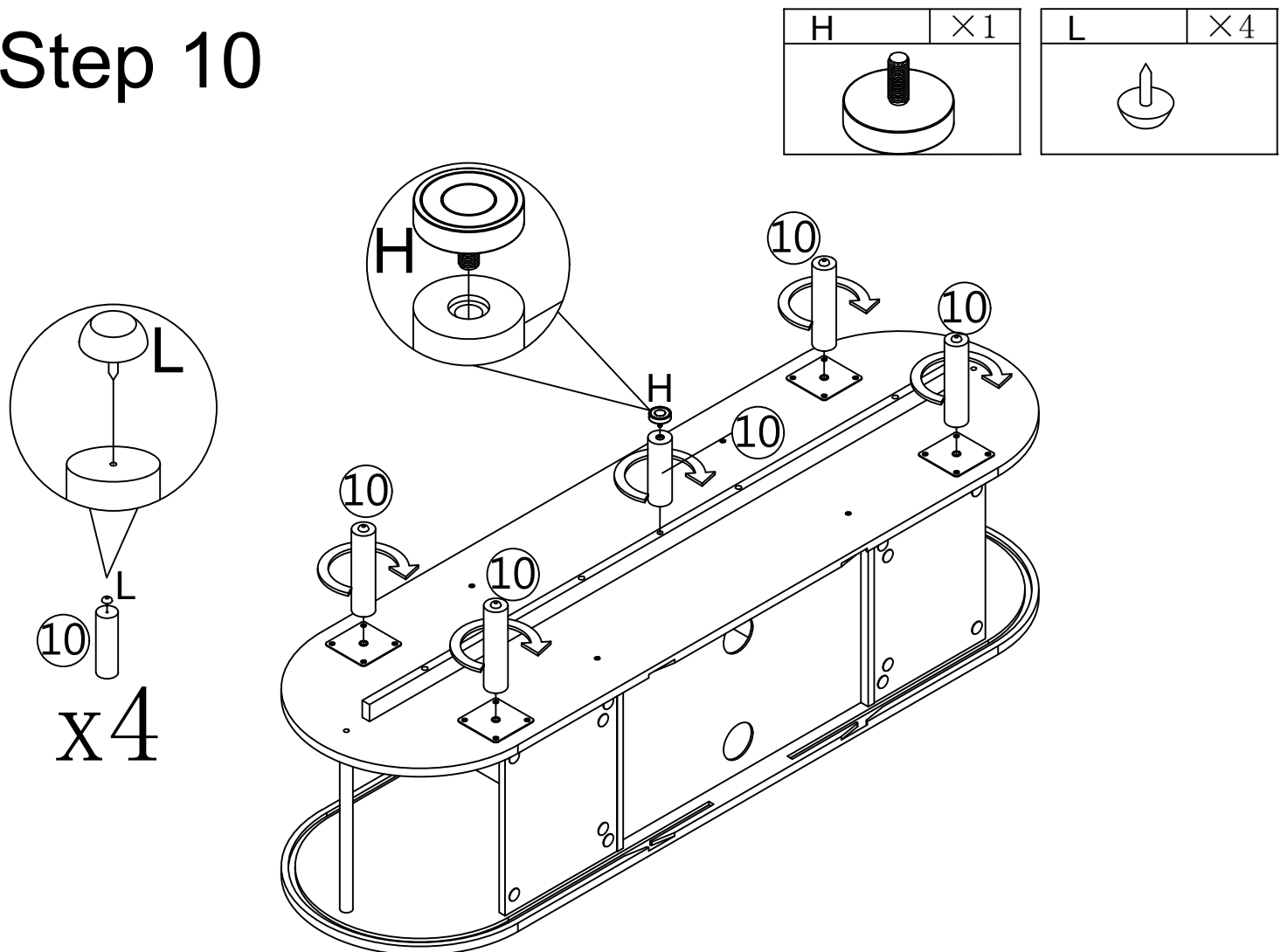
O	×6	Q	×1
			



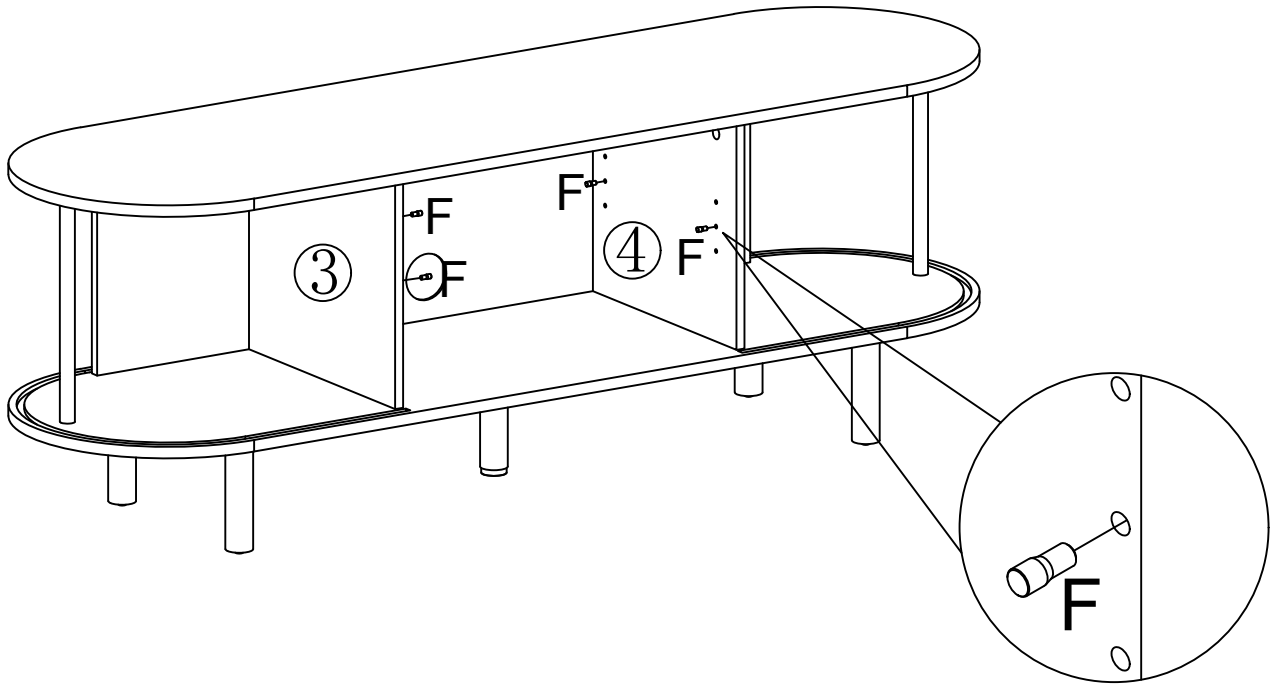
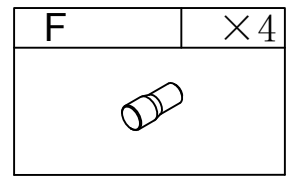
# Step 9



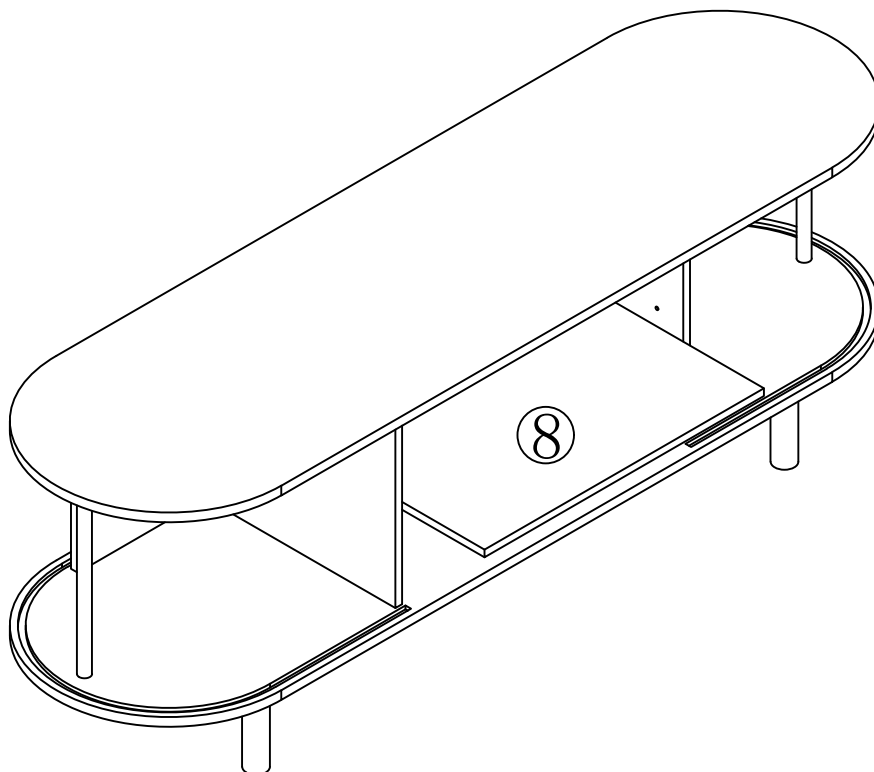
# Step 10





# Step 11

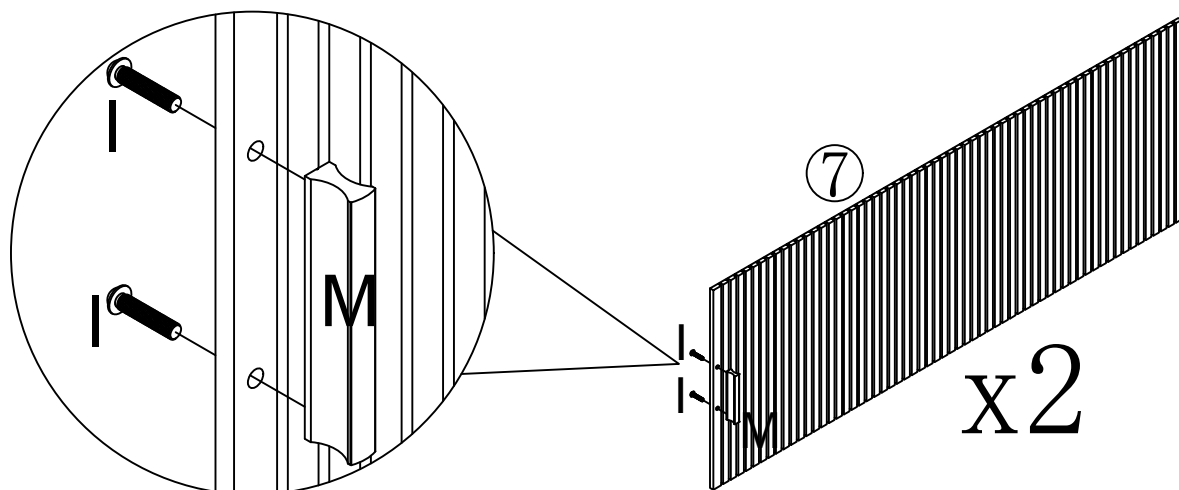


# Step 12

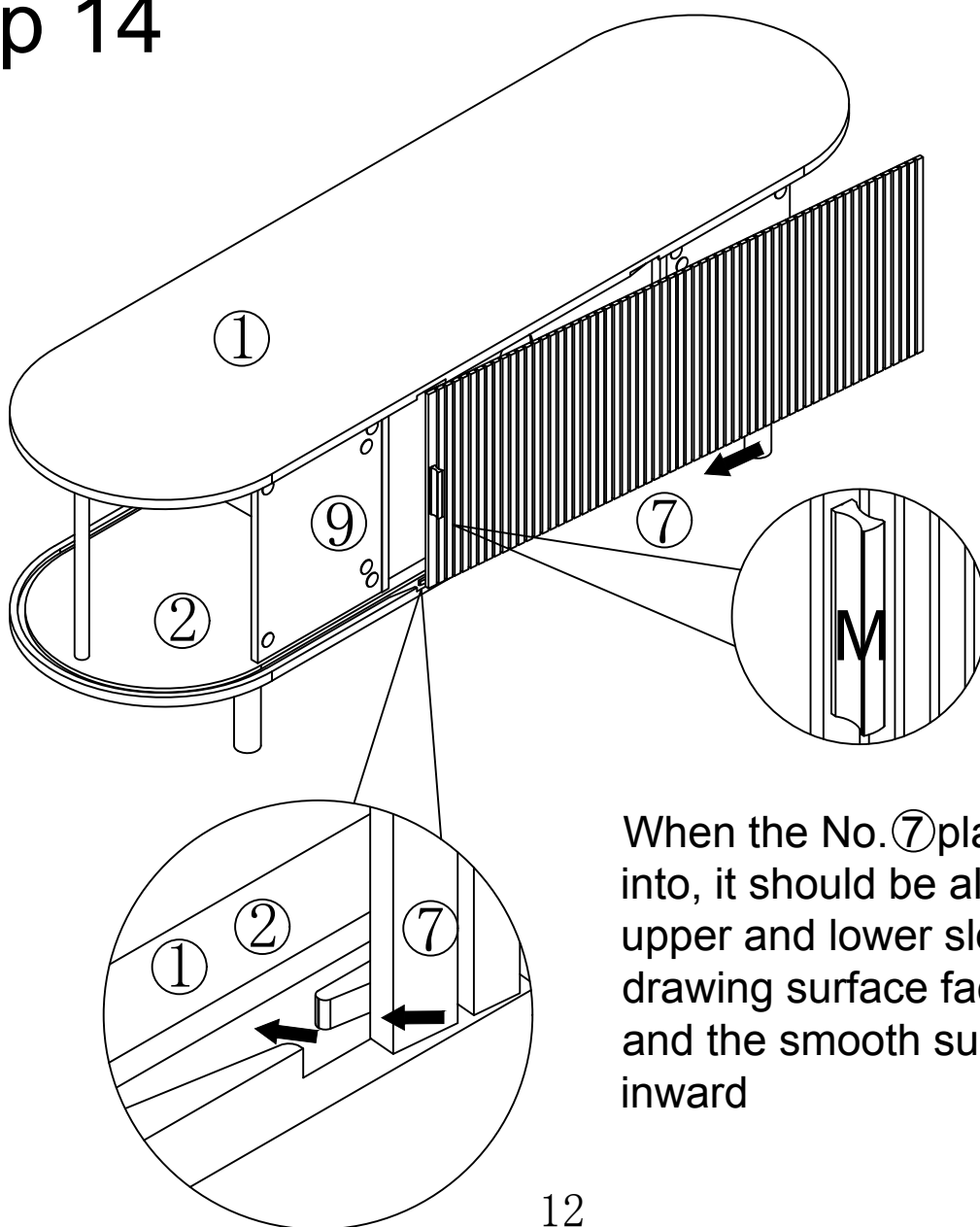


# Step 13

I	×4	M	×2
			

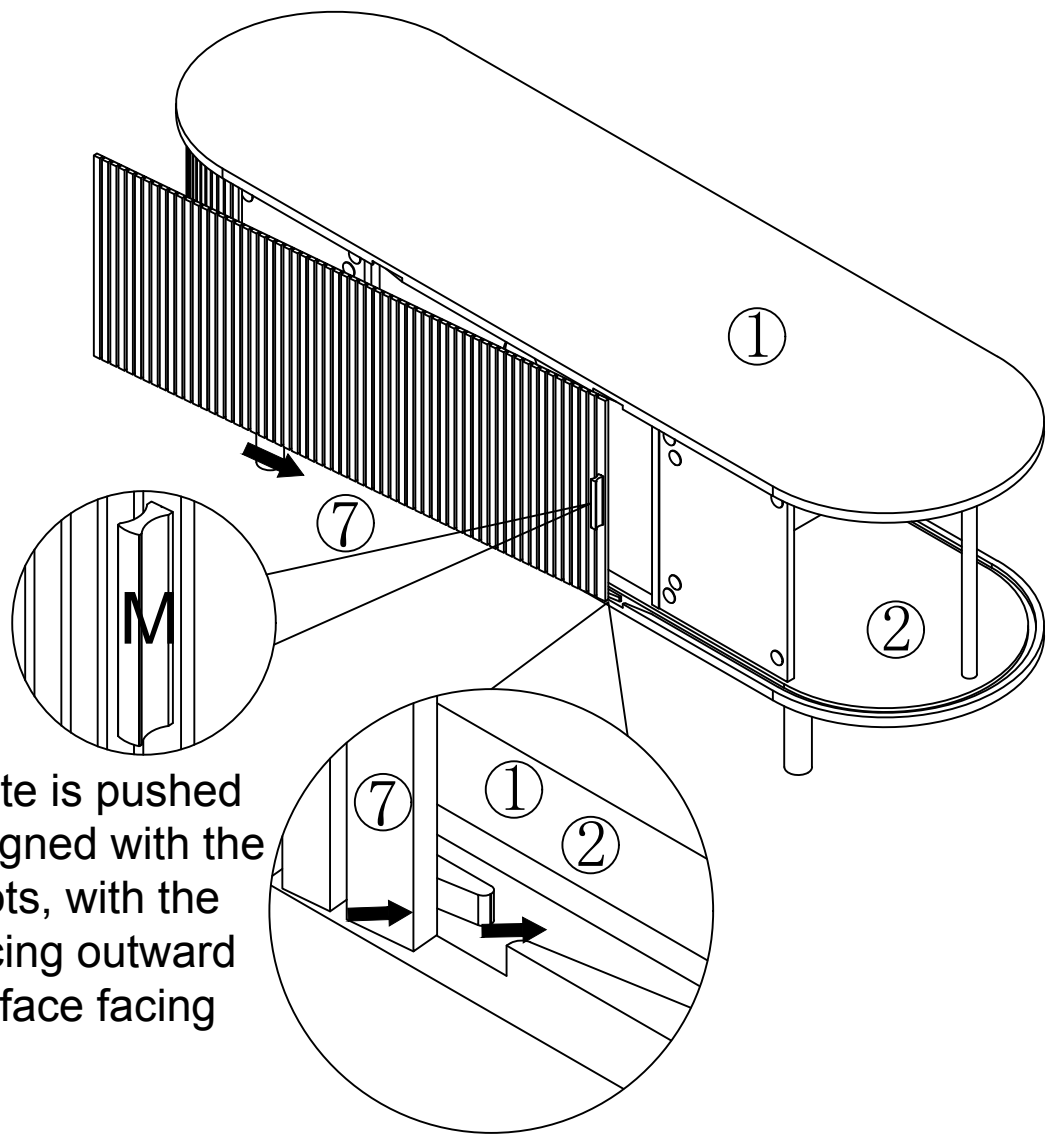


# Step 14




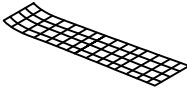
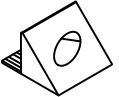
When the No. ⑦ plate is pushed into, it should be aligned with the upper and lower slots, with the drawing surface facing outward and the smooth surface facing inward

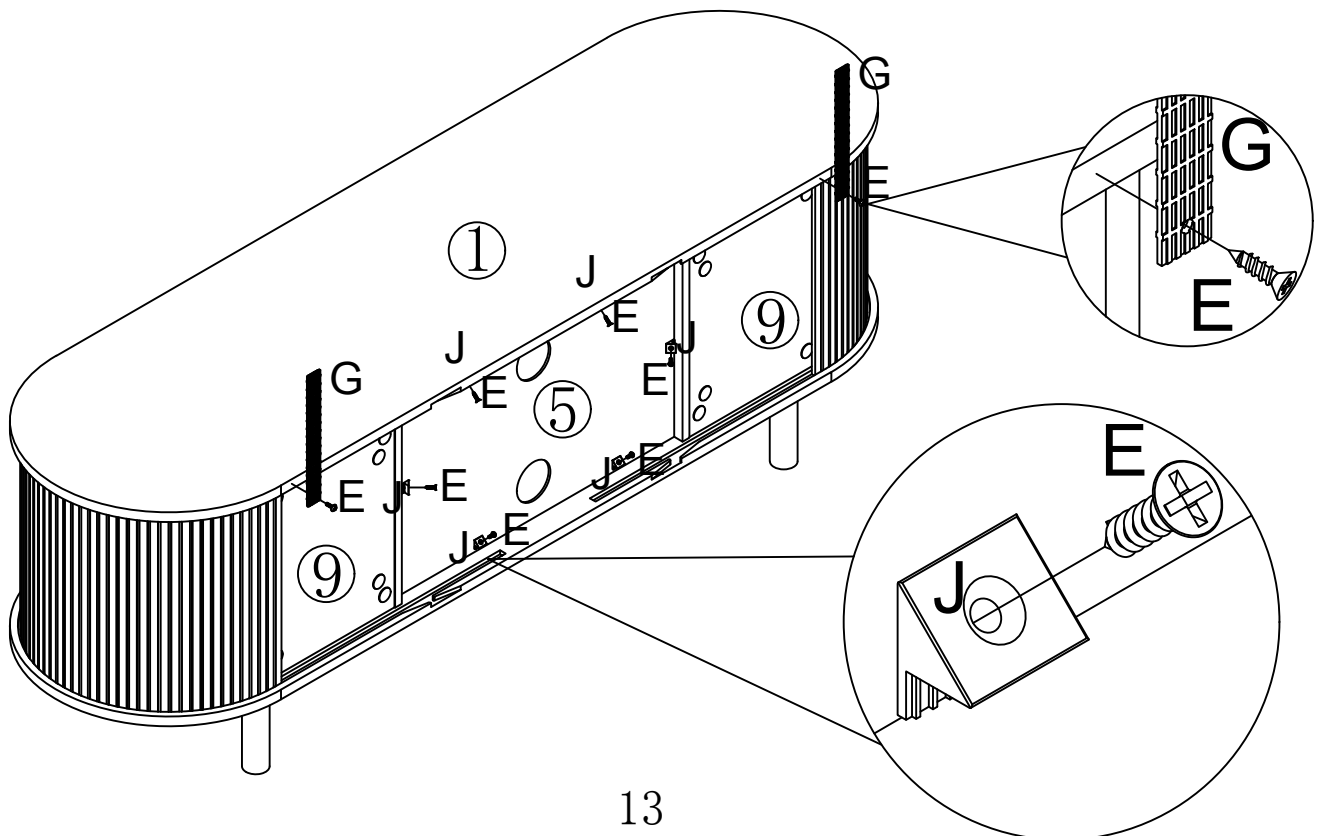
# Step 15



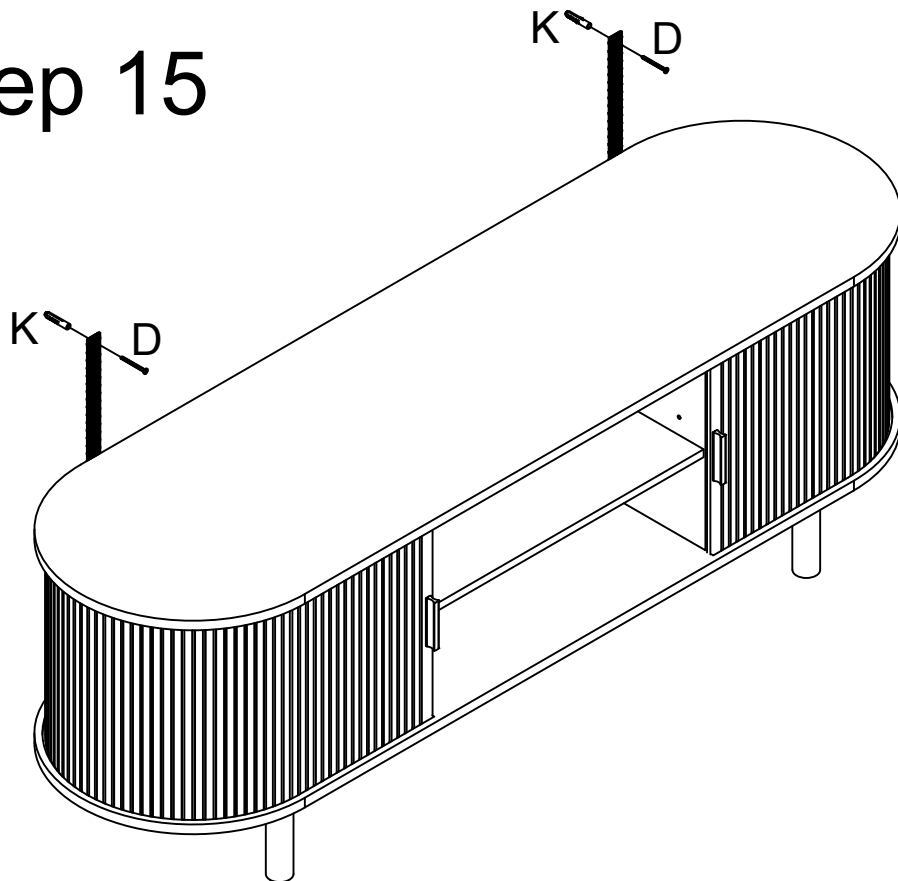
When the No. ⑦ plate is pushed into, it should be aligned with the upper and lower slots, with the drawing surface facing outward and the smooth surface facing inward

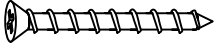

# Step 16

E	×8	G	×2	J	×6
					

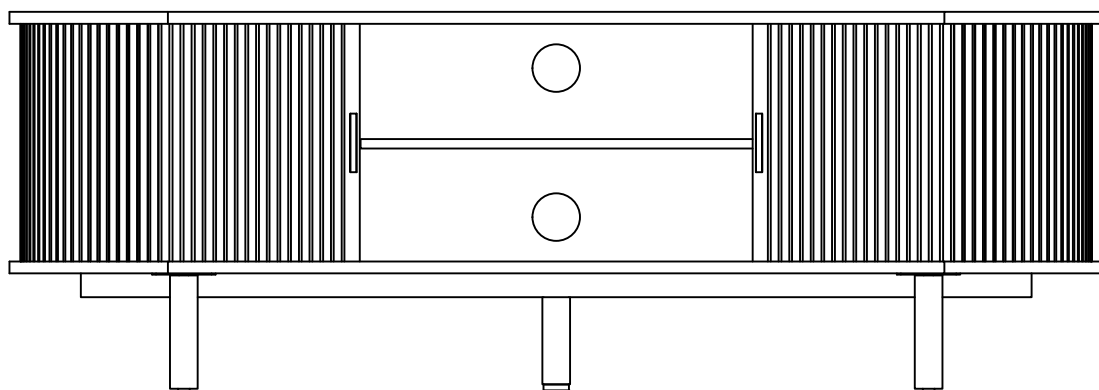


# Step 15

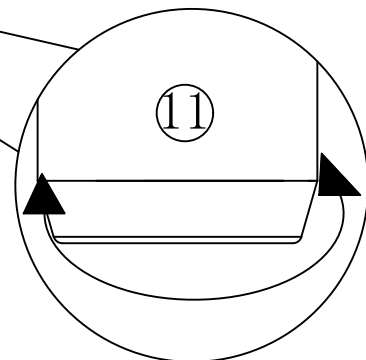



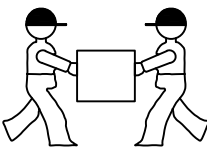
D	×2
	
K	×2
	

# Step 16



If the center position of the cabinet is too high or too low due to uneven bottom plates or other reasons, adjust the adjustable foot pads on feet ⑪ to adjust the upper and lower height



Two people work together to move the table. Make sure you lift it off the ground. Don't push and pull.