



Customer Service • 823-982-8955
Email • hd@boylliving.com
Website • www.boylliving.com

SHOWER FAUCET

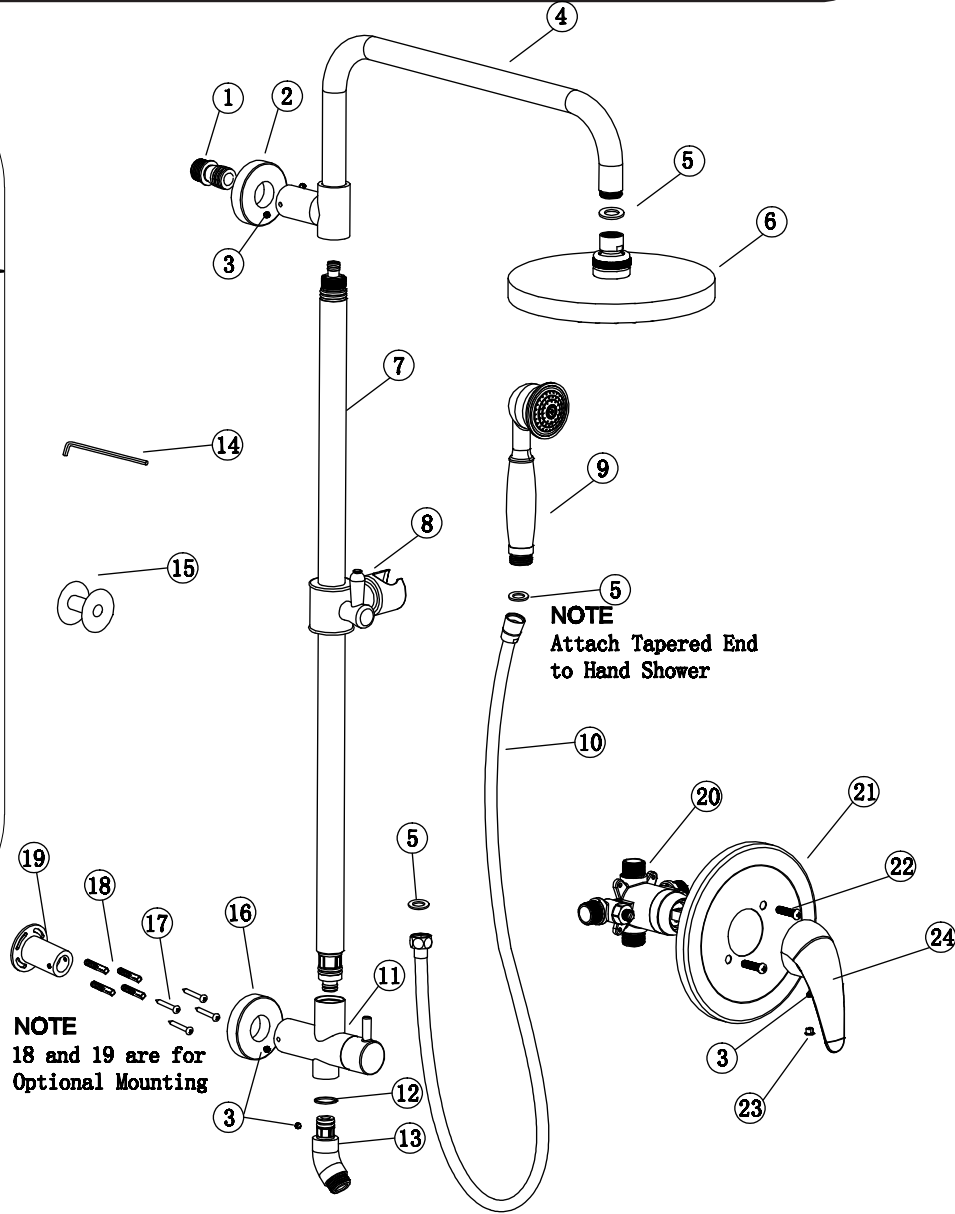
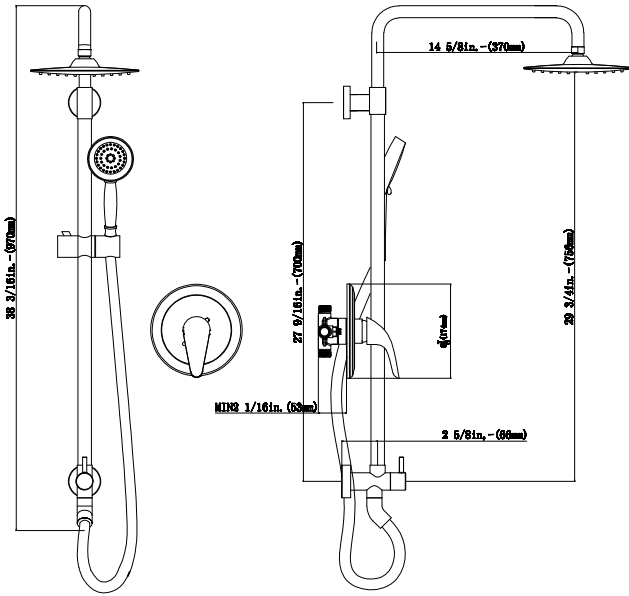
Installation Manual



Parts Legend

- | | | |
|-------------------------------|------------------------------|-------------------------------|
| 1. 1/2"x2" NPT Nipple | 9. Hand Shower | 17. Lower Mount Screw.....(4) |
| 2. Top Escutcheon | 10. Stainless Steel Hose | 18. Wall Anchor |
| 3. Set Screw-2.5x5mm(8) | 11. Diverter Body | 19. Lower Mount |
| 4. Shower Arm | 12. Wear ring | 20. Shower Body |
| 5. Rubber Washer.....(3) | 13. Swivel Joint | 21. Top Escutcheon |
| 6. Shower Head | 14. 2.5mm Hex Wrench | 22. Screw(2) |
| 7. Shower Pipe** | 15. PTFE Thread Sealant Tape | 23. Color Button |
| 8. Hand Shower Holder | 16. Top Escutcheon | 24. handle |

Figure



Installation Instructions

Thank you for choosing this Shower System by Boyel Living!

Assembly and installation of the Shower System is designed to be quick and easy. If you have installation questions or performance problems, Call Boyel Living Customer Service toll free at 323-982-8955 or send emails to hd@bovelliving.com

Please read instructions carefully, become familiar with all parts, installation procedures and tools required. Follow steps in order presented to help avoid mistakes.

FOR NEW CONSTRUCTION OR COMPLETE REMODEL

- A hot/cold mixing valve is required (NOT INCLUDED)
- Nipple should extend $\frac{1}{2}$ " past finished wall surface.

TOOLS REQUIRED

Adjustable wrench, Phillips screwdriver, pencil, 2.5mm hex wrench, 3mm hex wrench

ASSEMBLY

1. Determine length of brass NPT nipple (1) needed:
 - a. Place mark on existing shower arm at wall surface. Unscrew shower arm from elbow in wall.
 - b. Measure distance from mark on shower arm to end of shower arm threads. Add $\frac{1}{2}$ " to this measurement, and then round to nearest $\frac{1}{2}$ ".
Example 1: If measurement = $1\frac{1}{4}$ ", add $\frac{1}{2}$ " = $1\frac{3}{4}$ ", rounded = 2" NPT nipple—this is the length needed.
Example 2: If measurement = $1\frac{5}{8}$ ", add $\frac{1}{2}$ " = $2\frac{1}{8}$ ", rounded = 2" NPT nipple—this is the length needed.

IMPORTANT: If shower arm is located above tile/fiberglass wall surface you must add distance from sheetrock to face of tile/fiberglass shower wall to the above measurement.

NOTE: If supplied 2" nipple (1) is not correct length based on above formula, you must obtain correct size NPT brass nipple (sold separately), available at most hardware stores.

2. Apply generous amount of PTFE Thread Sealant Tape (24) to both ends of nipple (1).
3. Hand tighten inlet fitting (2) onto nipple (1), then nipple to fitting in wall. Use adjustable wrench on inlet fitting to tighten both connections simultaneously until both are secure with no leaks.
4. Slide hand shower holder (9) off shower pipe (7).
5. Slide soap dish (8) onto shower pipe to desired position and secure with set screw (25). For model 1077 slide soap dish retainer onto shower pipe. Slide plastic soap dish onto shower pipe and push soap dish down until flush with retainer.

CAUTION—DO NOT OVERTIGHTEN

6. Reinstall hand shower hanger (9).
7. Secure swivel joint onto bottom of diverter body (12). Swivel joint should move freely side to side.

CAUTION—DO NOT OVERTIGHTEN

8. Insert shower pipe (7) into top tee (4). Secure with set screw (17).

9. Slide top escutcheon (3) over top tee (4).

HINT—Lubricate escutcheon o-ring; a small amount of soapy water will do the trick.

10. Slide bottom escutcheon (13) over diverter body (12).

HINT—Lubricate escutcheon o-ring; a small amount of soapy water will do the trick.

11. Loosen set screw (20) on diverter and slide lower mount (15) into diverter body (12).
12. Push top tee (4) over inlet fitting (2) until flush against fitting. Position diverter body (12) so shower pipe is plumb (vertical).
13. Mark location of lower mount with pencil.
14. Wall surface must be clean of any residue and completely dry.

OPTION 1: 3M Tape

Remove covering of 3M Tape and position mount on marked locations.

15. Apply pressure to mount for 30 seconds by pushing firmly against the wall. To ensure proper adhesion, allow one hour before using your ShowerSpa and keep area around the mount as dry as possible for the first 24 hours. Tape and glue will be fully cured after 24 hours.
16. Position shower pipe (7) parallel to wall by sliding diverter body (12) on lower mount (15). Secure diverter to lower mount with set screw (20).
17. Insert rubber washer (21) into both ends of hose (11). Connect hex head end to swivel joint (18) and tapered end to hand shower (10). Place hand shower (10) into adjustable hanger (9).
18. Tighten shower head (6) securely to shower arm (5).

Usage

Diverter valve controls the showerhead and handshower function. Turn diverter clockwise for hand shower, counterclockwise for shower head. Position between for both functions.

Turn face of hand shower to switch settings.

Adjust the hand shower position by depressing the button on the hanger and sliding up or down.

Always turn cold water on first to help prevent any accidental burning or scalding; especially for children and elderly.

This Shower System is equipped with Spray Straight technology in the tips of the showerhead and hand shower. If the stream becomes obstructed from mineral deposits, simply rub the soft tips with your finger to loosen the deposits.

DO NOT use any part of the Shower System as a support device.

Care and Maintenance

To keep your Shower System looking new, wipe down after each use with a soft cotton cloth.

Protect your Shower System from hard water stains and mineral deposits by periodically using an auto spray wax.

Clean using mild liquid soap and a non-abrasive sponge or cloth. Rinse with clean water.

If the flow rate of your Shower System is less than desired or reduces over time, flow restrictors located in the inlet fitting can be removed for cleaning.

**Do Not Use Any Kind Of
Chemicals Or Abrasives!**