

# Dining Table



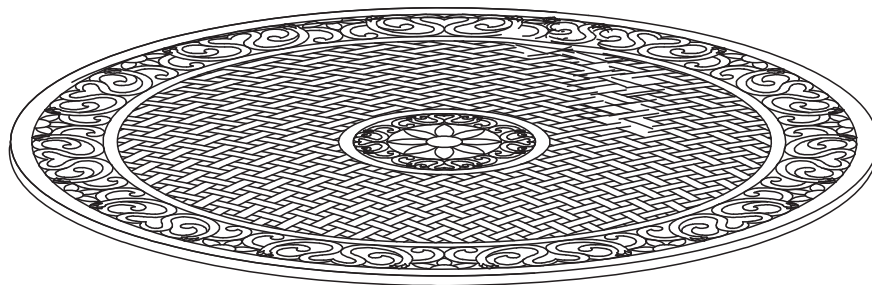
## IMPORTANT

Carefully remove all the parts from the carton and place them individually on a soft cloth to prevent scratches or other damage.

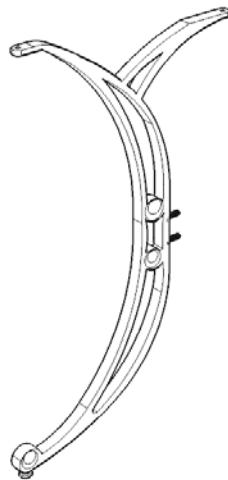
Carefully and strictly follow these assembly instructions to ensure a completed product as designed.

Do not use power tools above 8 volts to assemble.

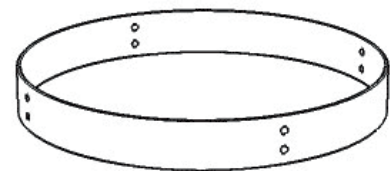
## Part List



A.  
Top  
1 pc.



B.  
Leg  
4 pcs.



C.  
Stretcher  
1 pc.

## Hardware List



Key Wrench  
1 pc.



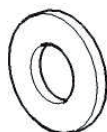
Spring Washer  
16 pcs.(+1 extra)



Nut  
16 pcs.(+1 extra)



M8x35  
Bolt  
8 pcs.(+1 extra)



Flat Washer  
16 pcs.(+1 extra)



Nut Cap  
16 pcs.(+1 extra)



Cover  
1 pc.

Tool(s) required for assembly: Slotted screwdriver, Level

# Assembly Instructions 2/2

## IMPORTANT

- Use a soft cloth between these parts and the floor.
- Do not use power tools above 8 volts to assemble.
- Do not tighten all the bolts until each part is properly assembled.
- The unit must be level to work properly. Use the included adjustable levelers to level.
- Keep Key Wrench in a safe place as the bolts may need to be tightened up in the future.

## STEP 1

Place Top (A) upside down on a soft cloth.

Insert Bolts into the pre-drilled holes of Top (A).

## STEP 2

Attach two adjacent Legs (B) to Top (A) with Flat Washers, Spring Washers, and Nuts, tightening the Nuts only half way. (See Figure 1)

## STEP 3

Attach Stretcher (C) to unit with Flat Washers, Spring Washers and Nuts, tightening the Nuts only half way.

Attach remaining two Legs (B) to unit with Flat Washers, Spring Washers and Nuts.

Tighten all Nuts used in Step 2 and 3 with Key Wrench.

## STEP 4

Cover all Nuts with Nut Caps.

Turn the table over to its' upright position.

Cover the umbrella hole with Cover. (See Figure 2)

To level the table, adjust the adjustable levelers on the bottom of legs. (See Figure 3)

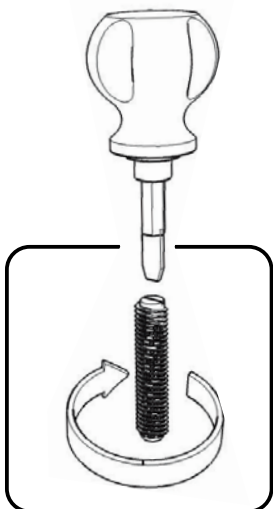
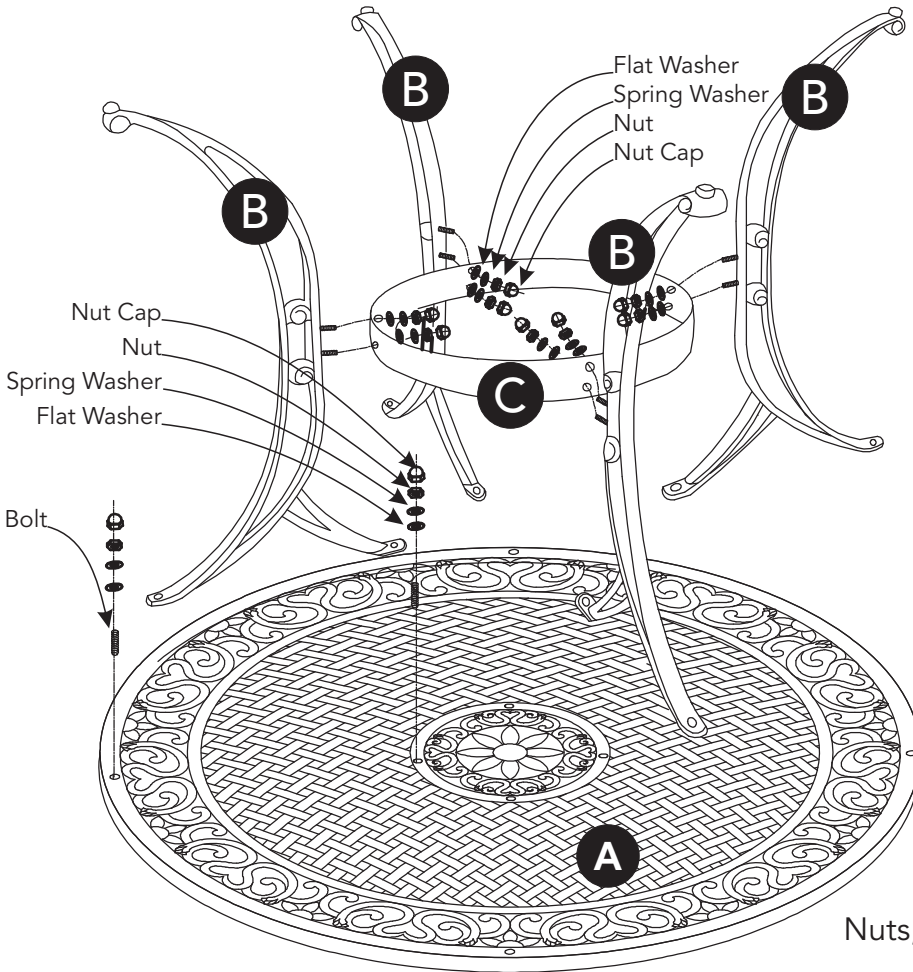


Figure 1

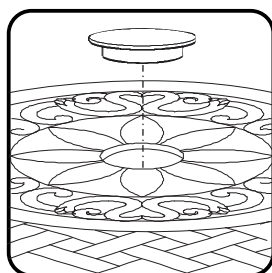


Figure 2

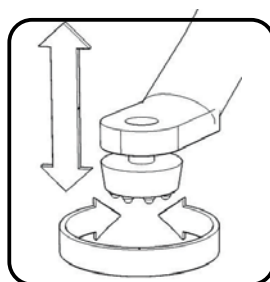


Figure 3

# CARE INSTRUCTIONS

## NEVER

allow liquids to remain on furniture.  
Absorption causes parts to warp  
and split and finishes to delaminate.

## NEVER

use glass cleaners on  
finished furniture. Ammonia  
chemically attacks the finish.



Do not use power tools  
above 8 volts to assemble.  
**PREVENT  
CRACKING**



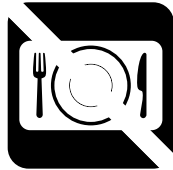
Do not place  
in direct sunlight.  
**PREVENT  
FADING**



Do not write  
directly on surface.  
**PREVENT  
MARKING**



Do not place hot  
objects on surface.  
**PREVENT  
FINISH DAMAGE**



Do not use rubber  
based placemats.  
**PREVENT  
DISCOLORING**



Do not use commercial  
waxes and polishes.  
**PREVENT  
YELLOWING**

## CLEAN

with a soft cloth moistened  
in lukewarm soap and water.  
Buff with a dry clean cloth.

