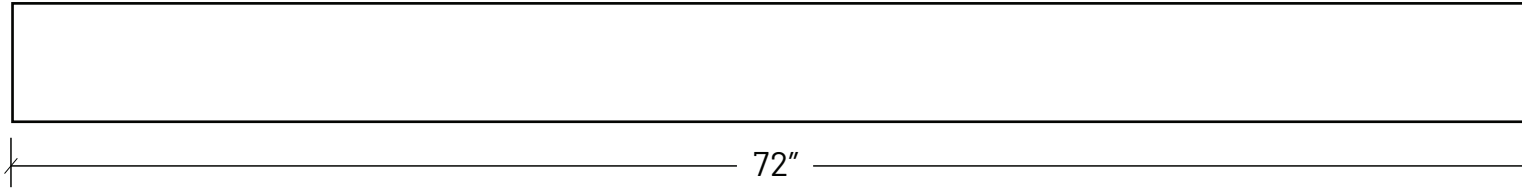
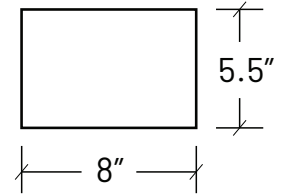


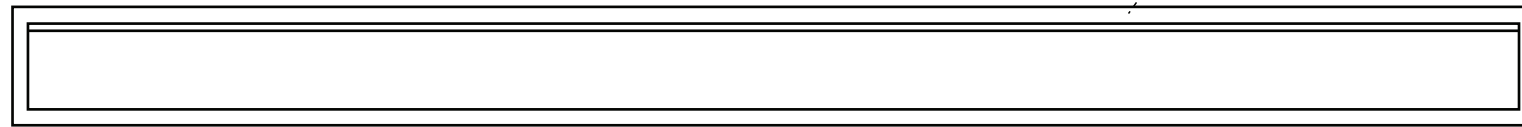
FRONT ELEVATION



SIDE



REAR ELEVATION



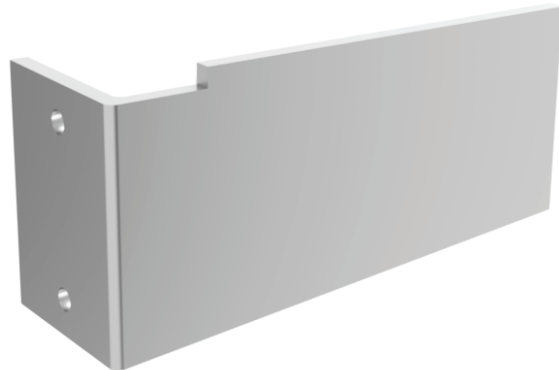
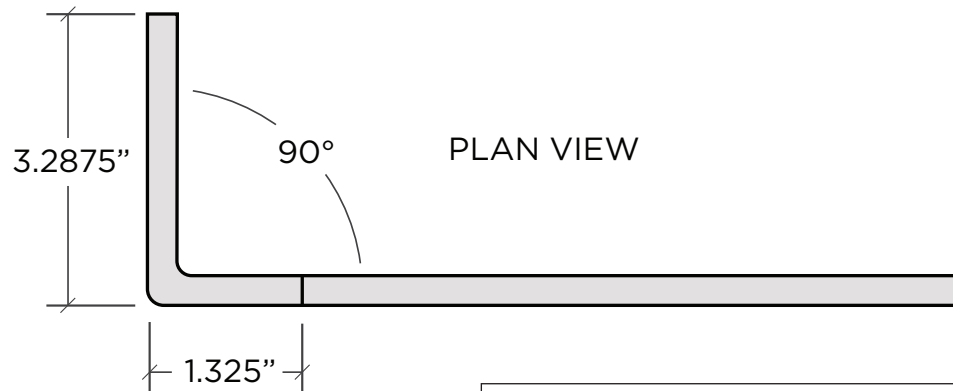
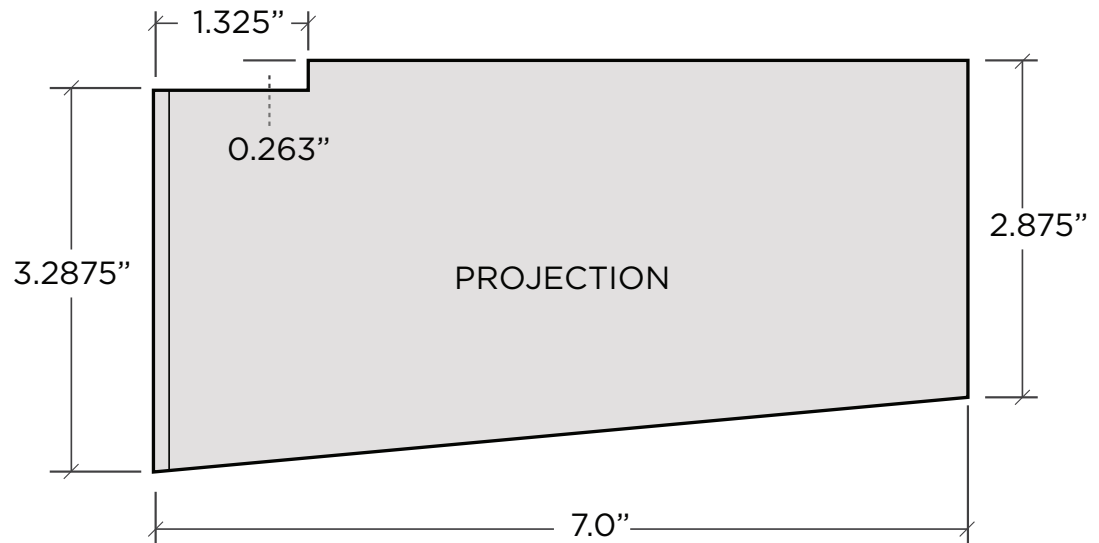
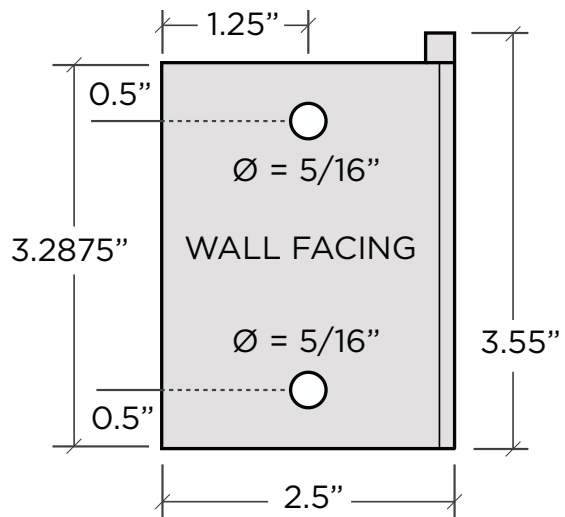
CONCRETE IS 0.75" THICK THROUGHOUT

PLAN VIEW



SPECIFICATIONS

- DIMENSIONS: 72" L X 5.5" H X 8" D
- WEIGHT: 93 LBS
- FEATURES A 0.25" X 1.125" SAFETY CLEAT
- INDOOR & OUTDOOR USE
- CONCRETE IS 0.75" THICK THROUGHOUT
- TWO SUPPORT BRACKETS & 4 LAG BOLTS INCLUDED
- CAN BE MOUNTED TO WALL STUDS OR CMU SURFACES (TAPCON SCREWS NOT PROVIDED)



SPECIFICATIONS

- DIMENSIONS: 7" x 3.55" x 2.50"
- 1/4" THICK BENT STAINLESS STEEL
- FEATURES A RECESS TO HOLD SAFETY CLEAT
- INDOOR & OUTDOOR USE
- LEFT & RIGHT VERSIONS
- 4 LAG BOLTS INCLUDED
- CAN BE MOUNTED TO WALL STUDS OR CMU SURFACES (TAPCON SCREWS NOT PROVIDED)