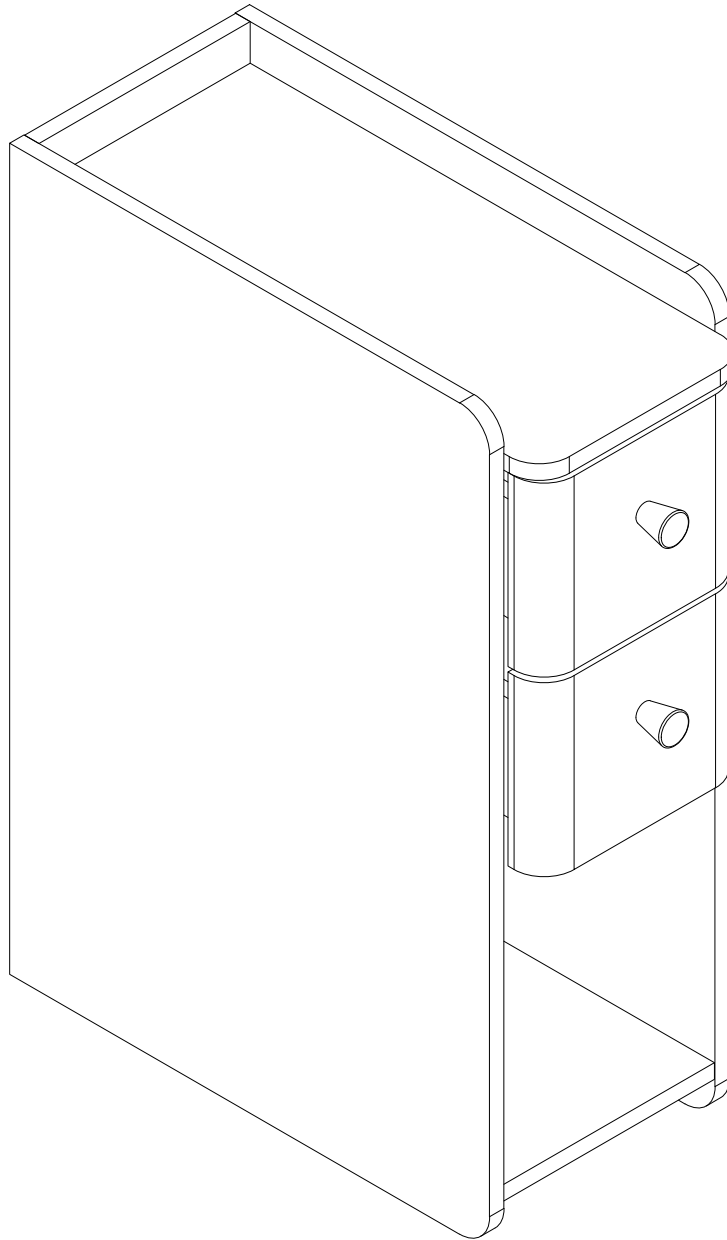


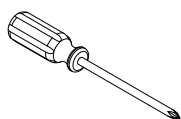
Installation Instruction



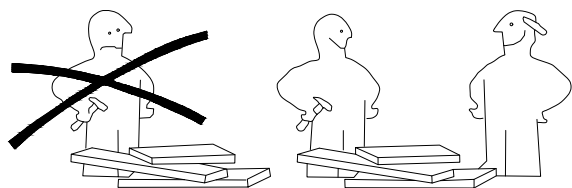
Assembling

What you need

- Use the packaging carton as a working surface to prevent product damage during assembly
- Phillips head screwdriver



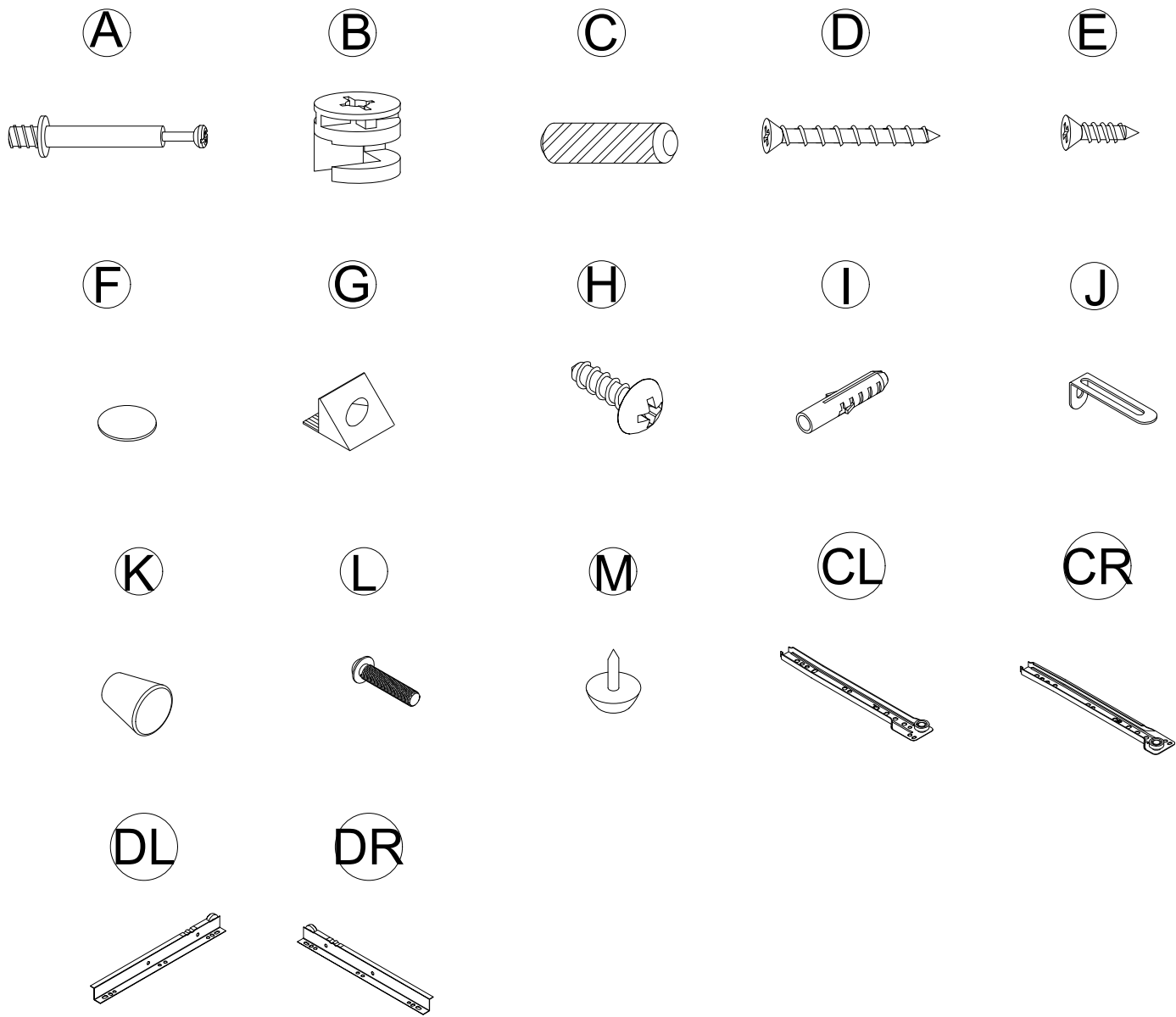
Weight Limitation



What' included

Code	Description	Qty
A	Cam Bolt M6X35MM	16
B	Cam Lock 15X9MM	16
C	Wooden Dowel M6X30MM	10
D	Screw M4X35MM	12
E	The screw M3X12MM	20
F	Hole position sticker	12
G	The back button	4
H	Screw M3.5X12MM	2
I	Anchor	2
J	Metal connector	2
K	Drawer pull	2
L	Cam Bolt M4X28MM	2
M	MATS	4
CL	Left mother extended orbit	2
CR	Right mother extended orbit	2
DL	Left public extension track	2
DR	Right public extends track	2

The Hardwares



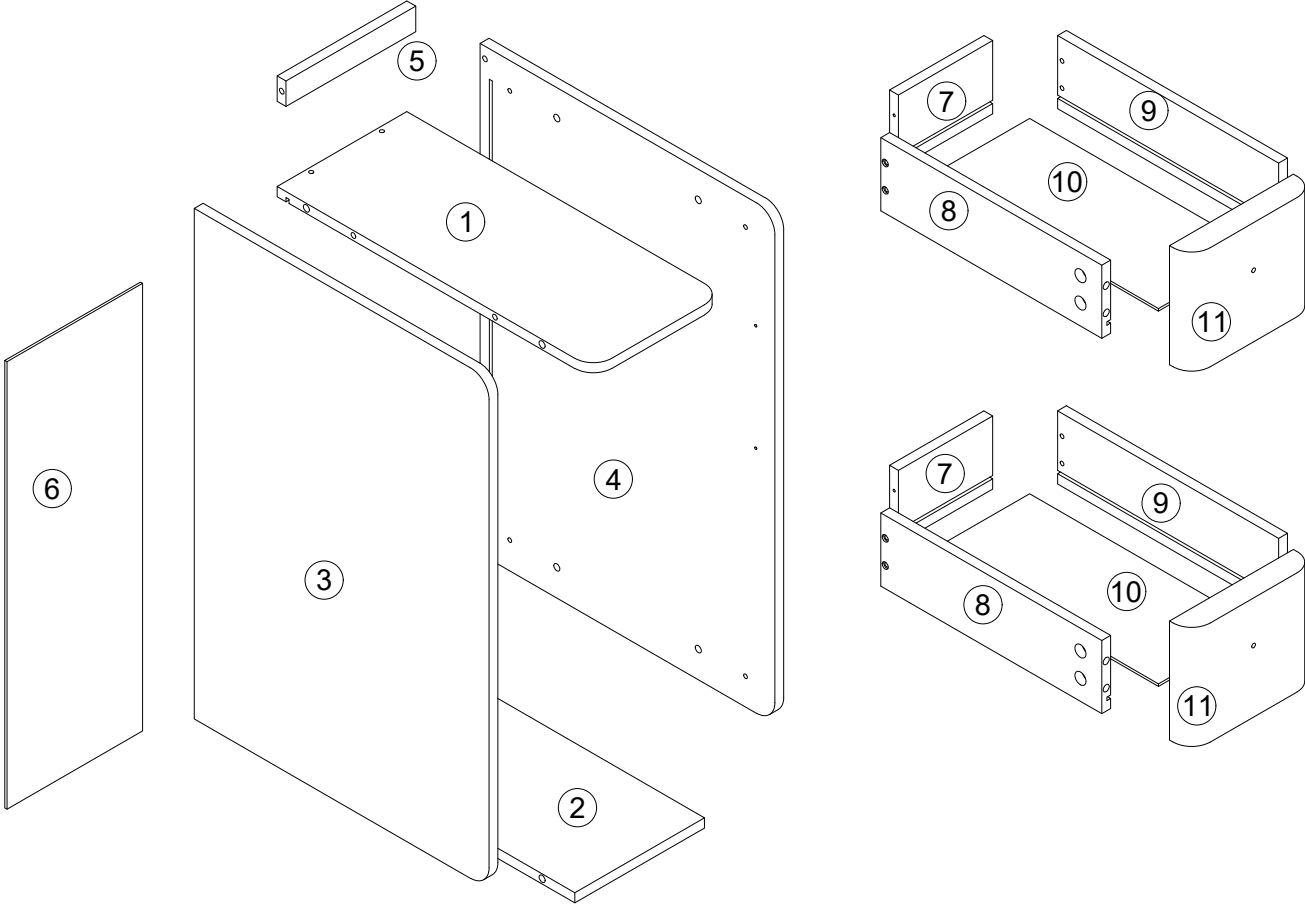
IMPORTANT:

1. Do not tighten bolts / screws completely until all bolts / screws are lined up and inserted into holes.
2. Do not over tighten screws and bolts to avoid stripping
3. Please use hand tools to assemble this product, you can also use power tools (please use power tools carefully)

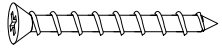
Included Accessories

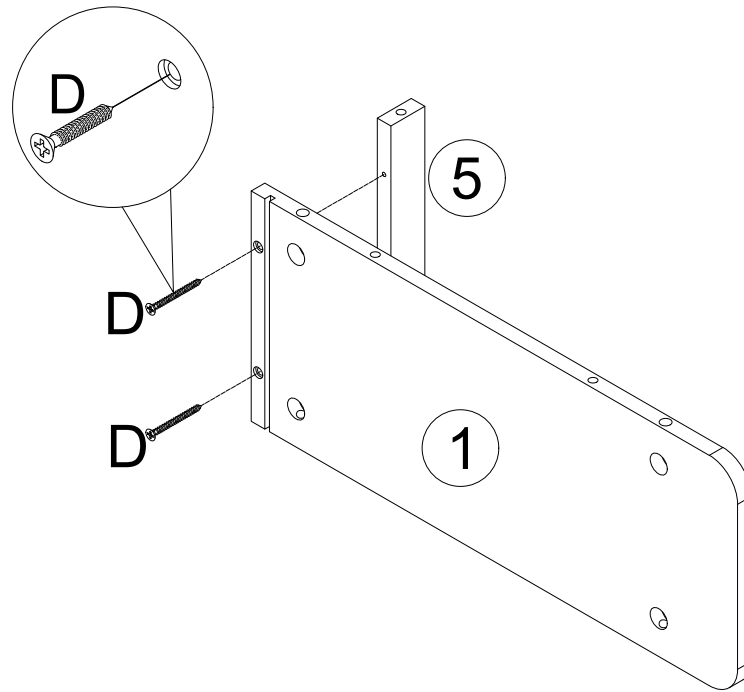
Code	Description	Qty
1	Cabinet Top	1
2	Bottom Panel	1
3	Left Side Panel	1
4	Right Side Panel	1
5	Check Rails	1
6	Back plate	1
7	After the drawer board	2
8	Drawer left panel	2
9	Drawer right side panel	2
10	The drawer bottom	2
11	Drawer panel	2

The Accessoriess

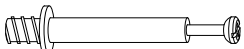



Step 1


D	×2
	

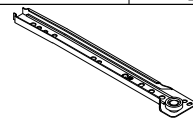


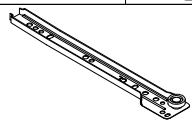
Step 2

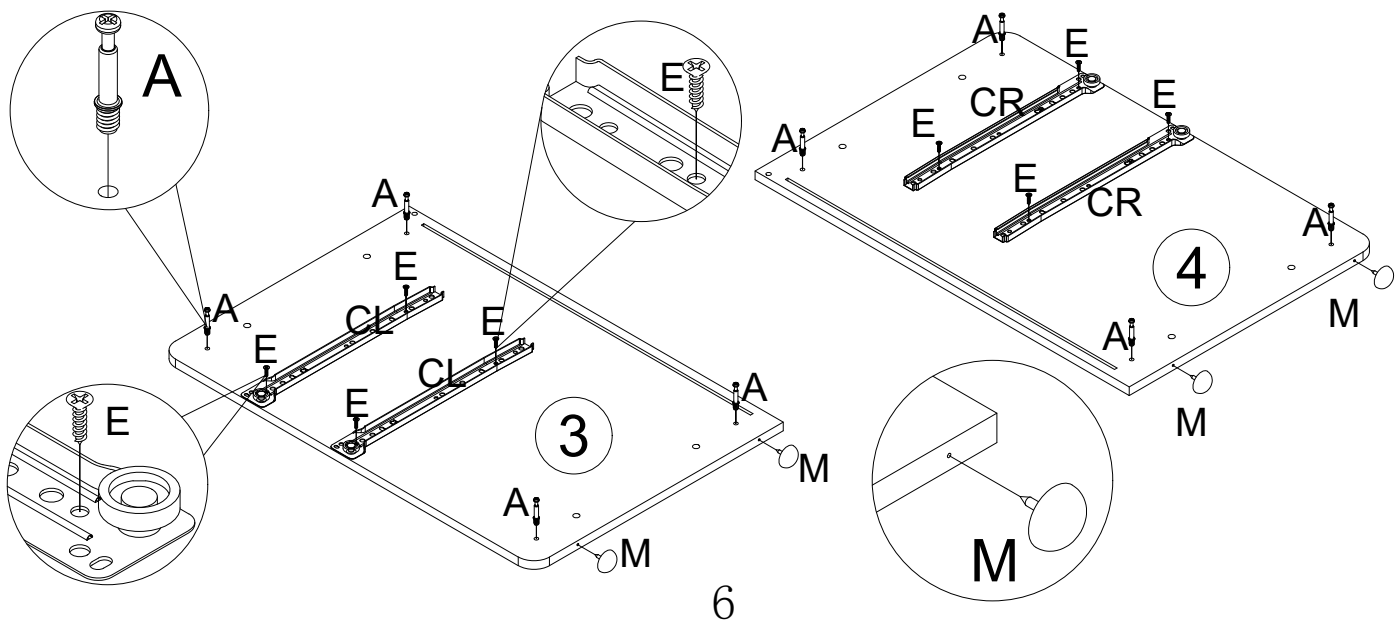
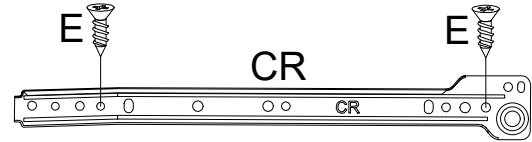
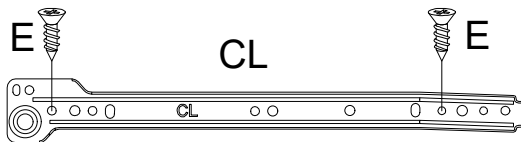
A	×8
	

E	×8
	

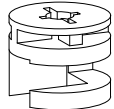
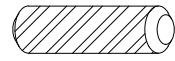

M	×4
	

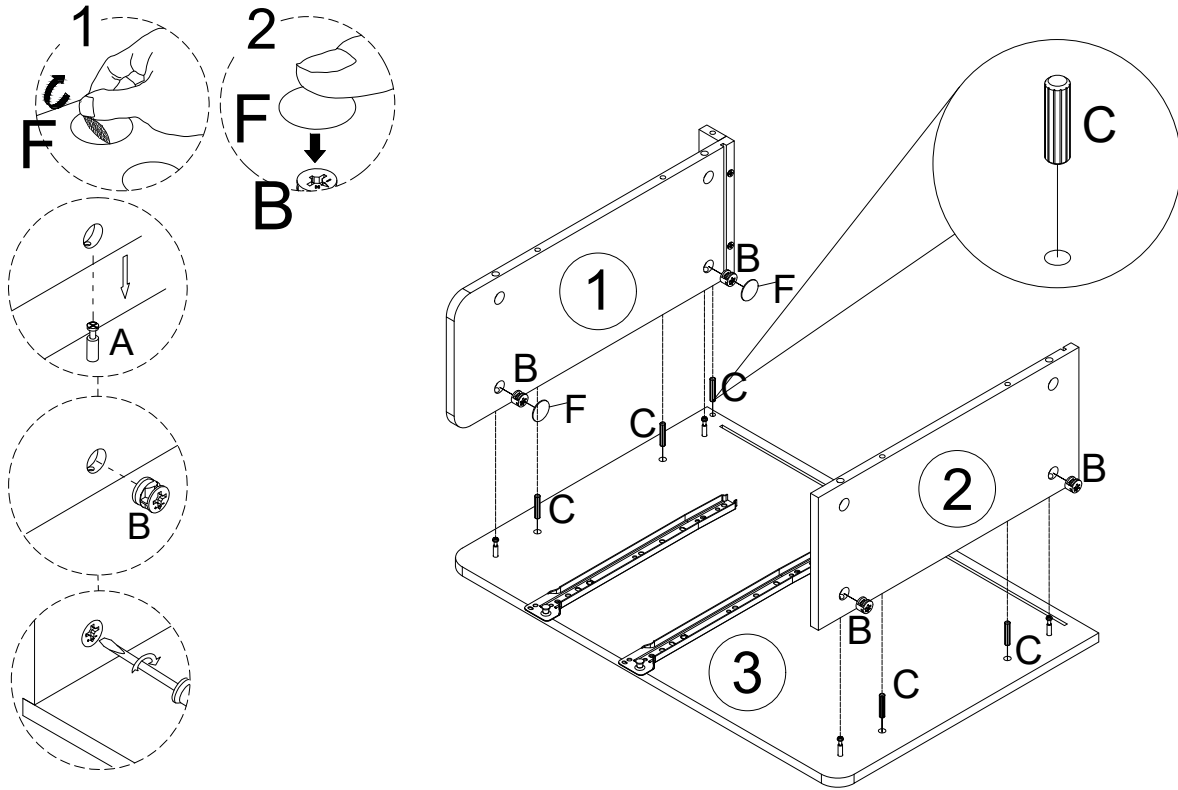
CR	×2
	

CL	×2
	

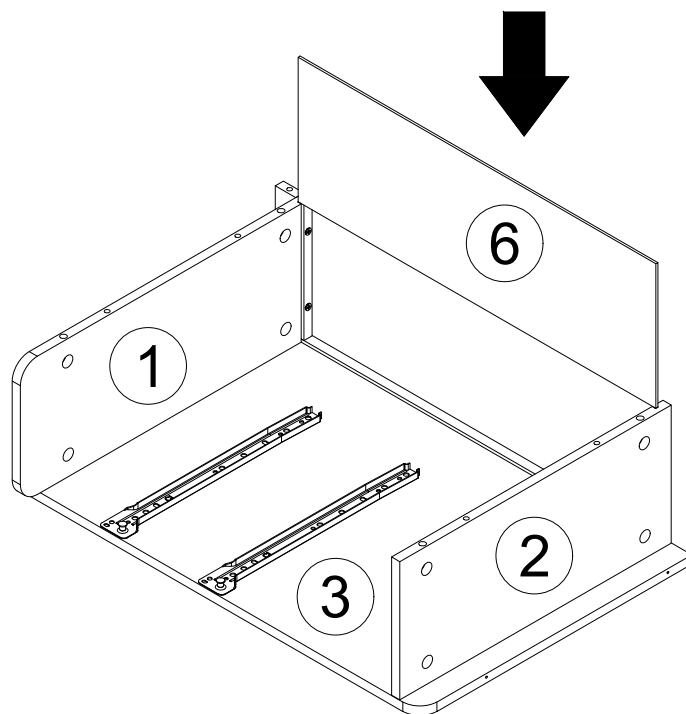


Step 3

B	×4	C	×5	F	×2
					

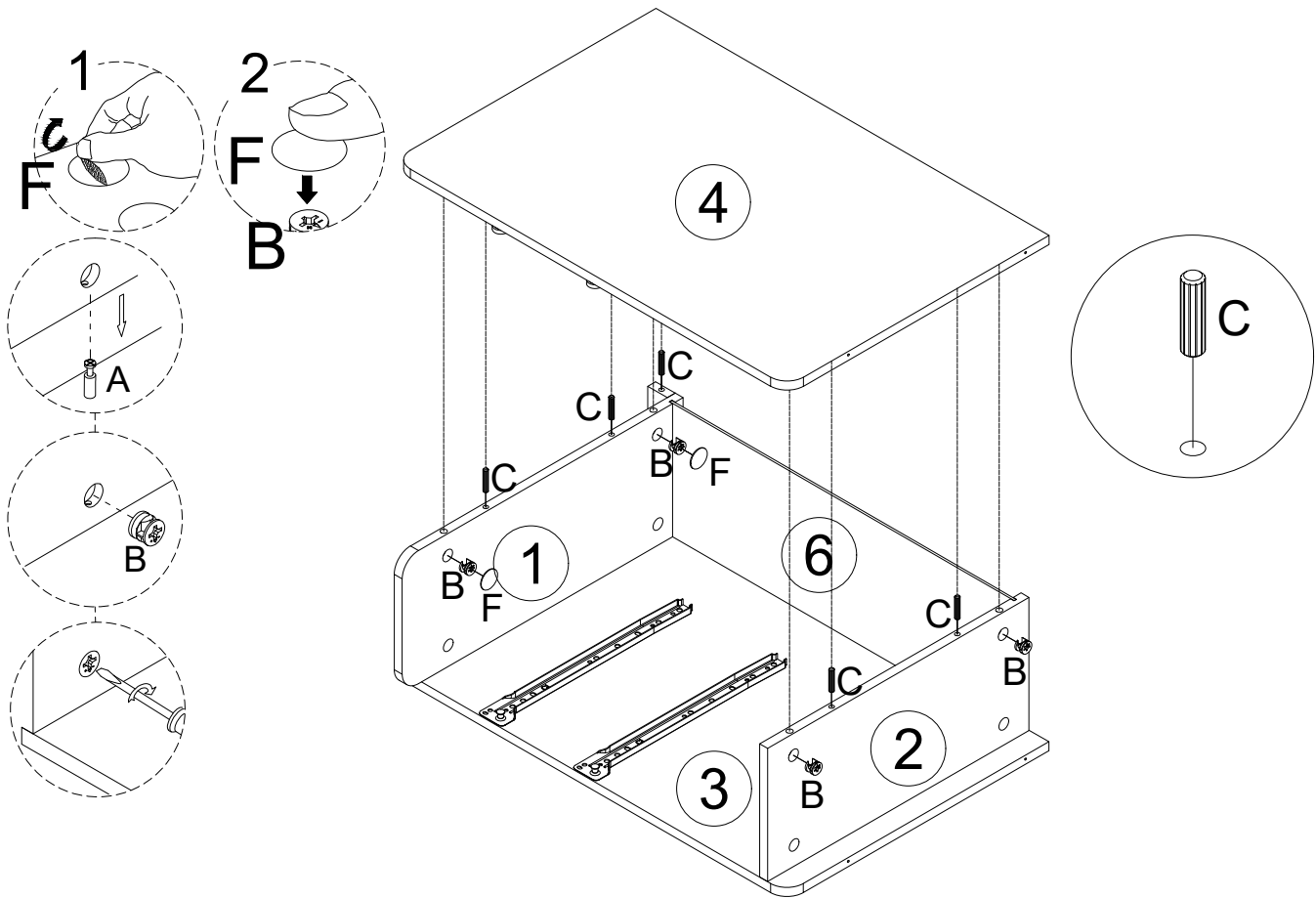


Step 4



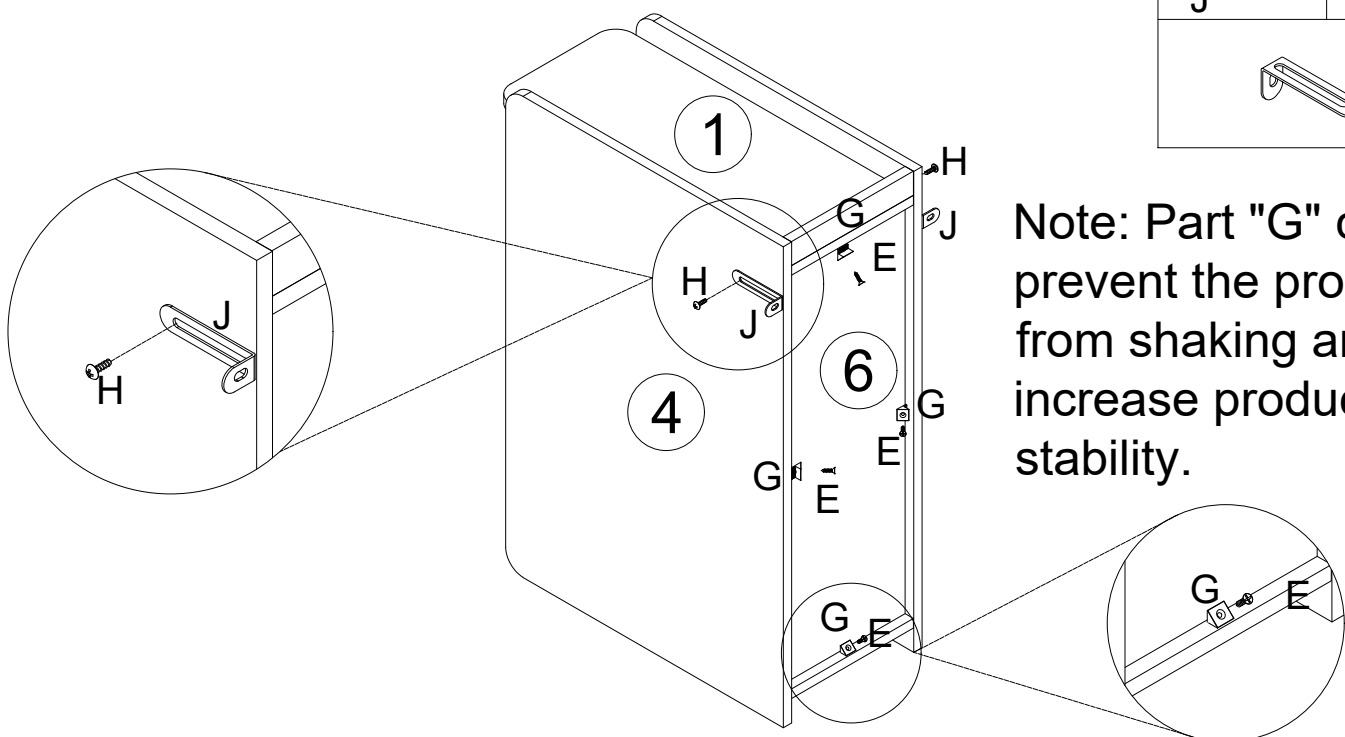
Step 5

B	×4	C	×5	F	×2



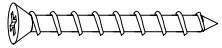
Step 6

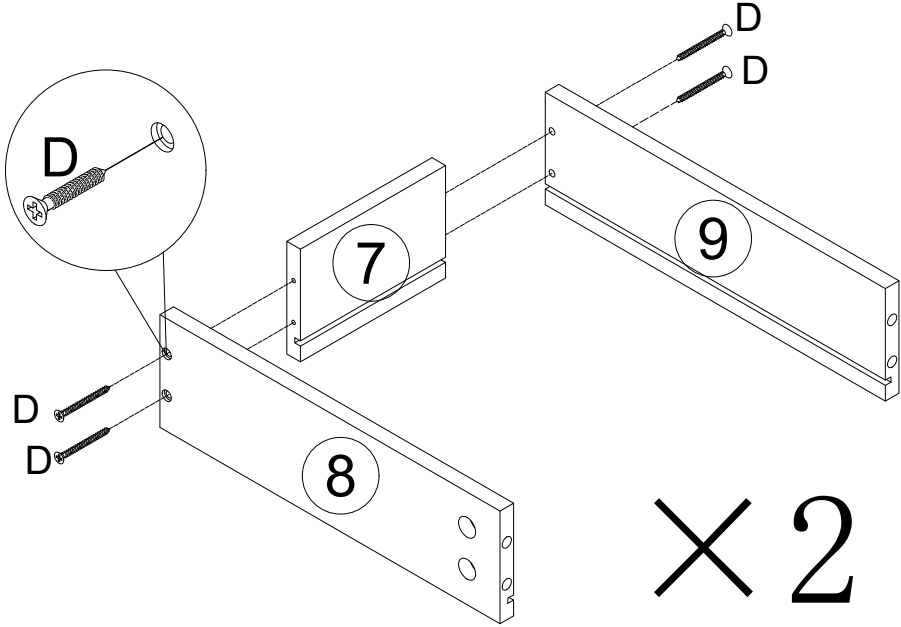
E	×4	G	×4	H	×2
				J	×2



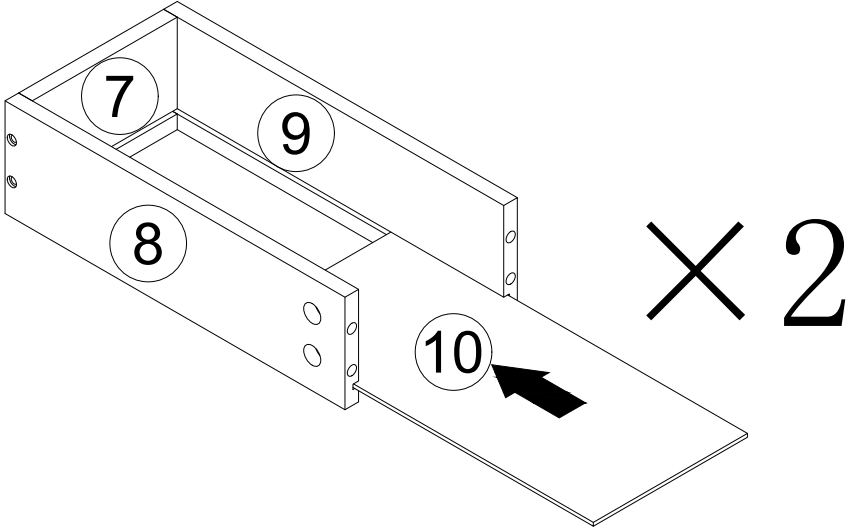
Note: Part "G" can prevent the product from shaking and increase product stability.

Step 7

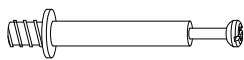
D	×8
	

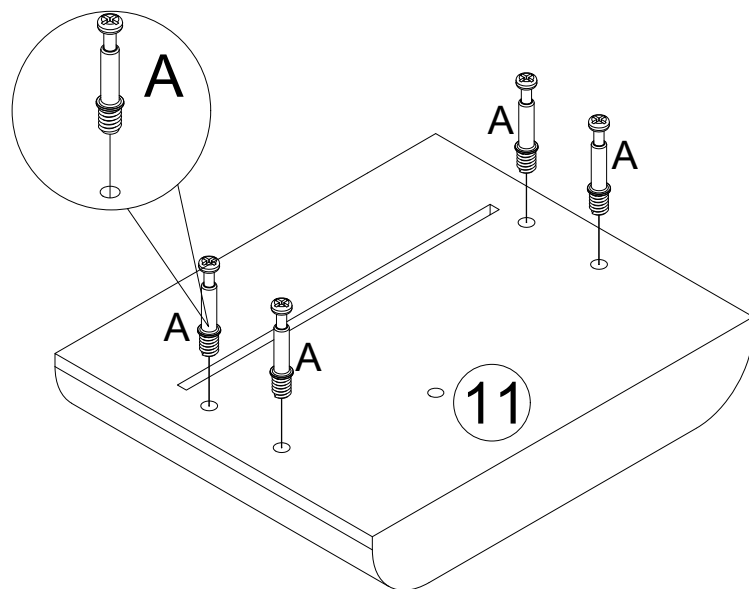


Step 8



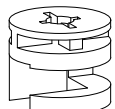
Step 9


A	×8
	





×2

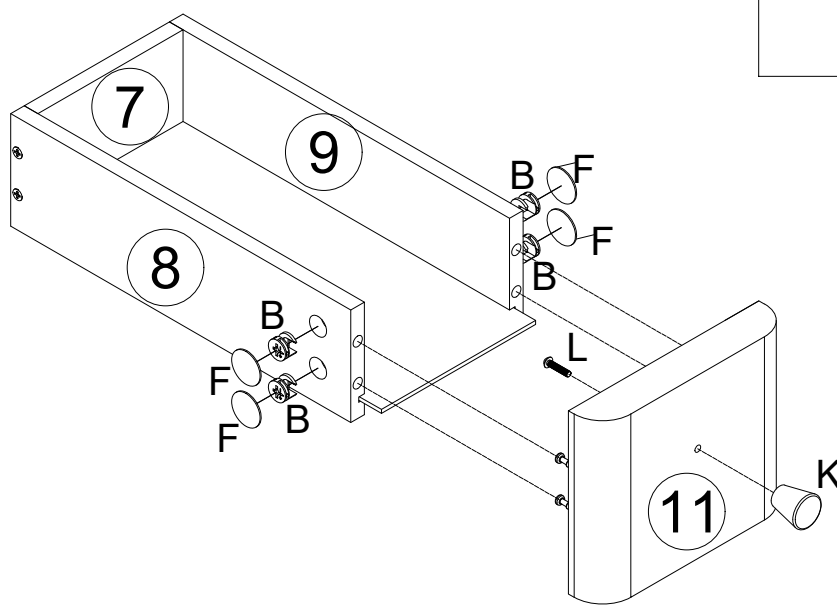
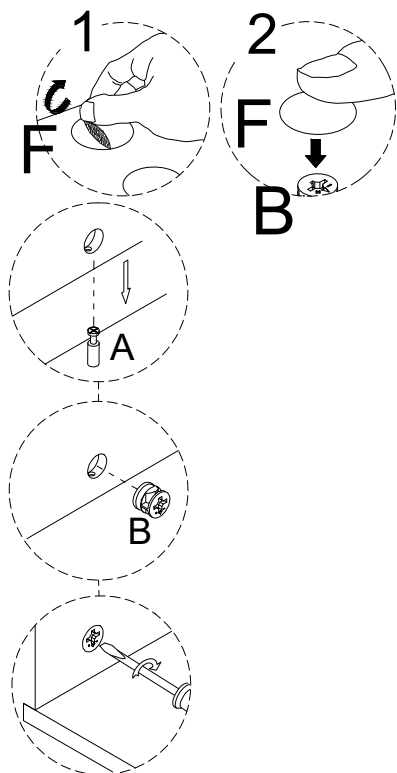
Step 10

B	×8
	

F	×8
	


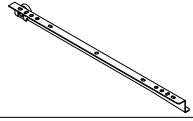
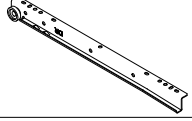
K	×2
	

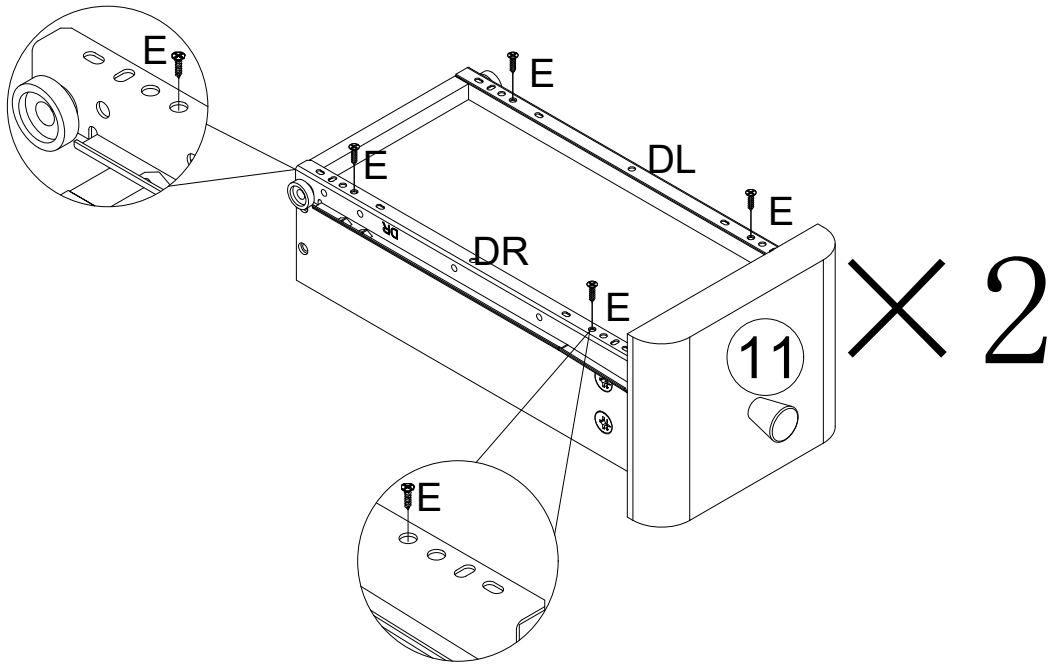
L	×2
	



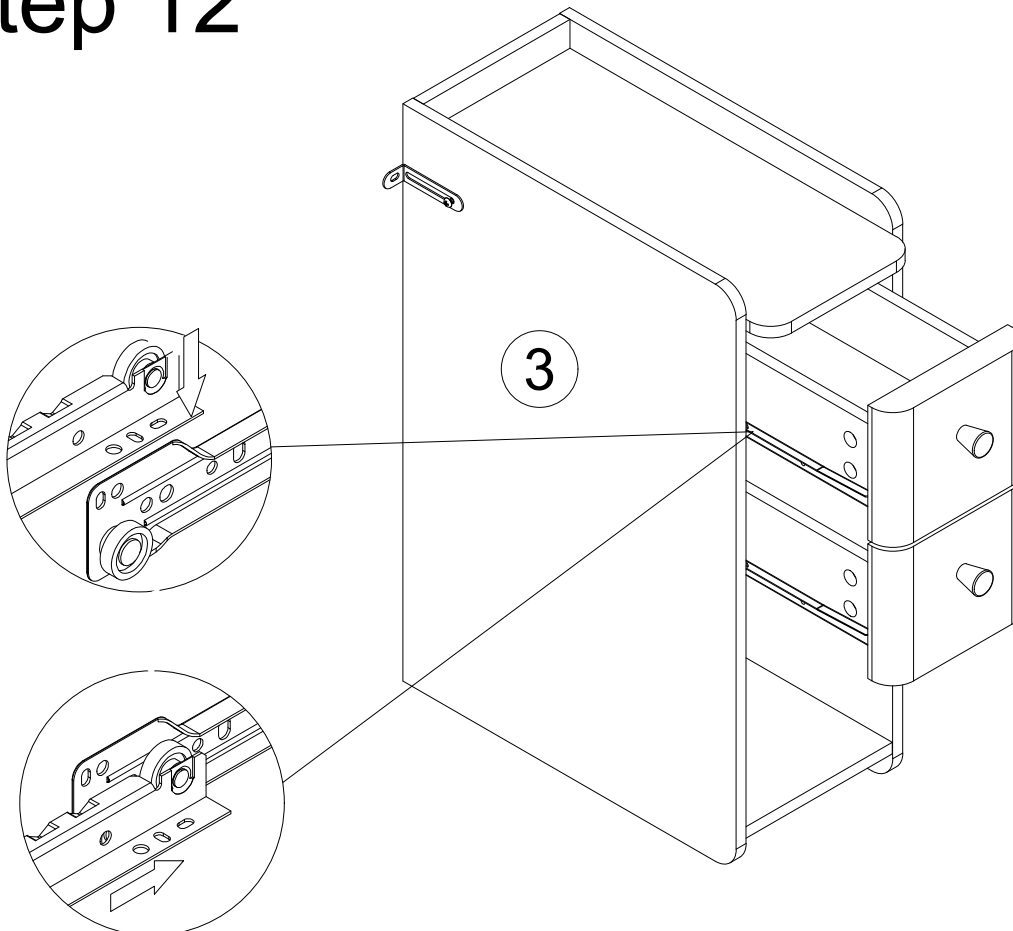
×2

Step 11

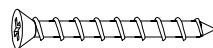
E	×8	DL	×2	DR	×2
					

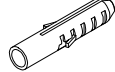


Step 12

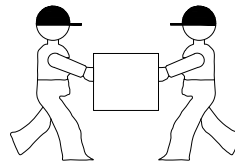
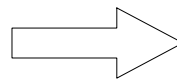
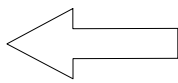
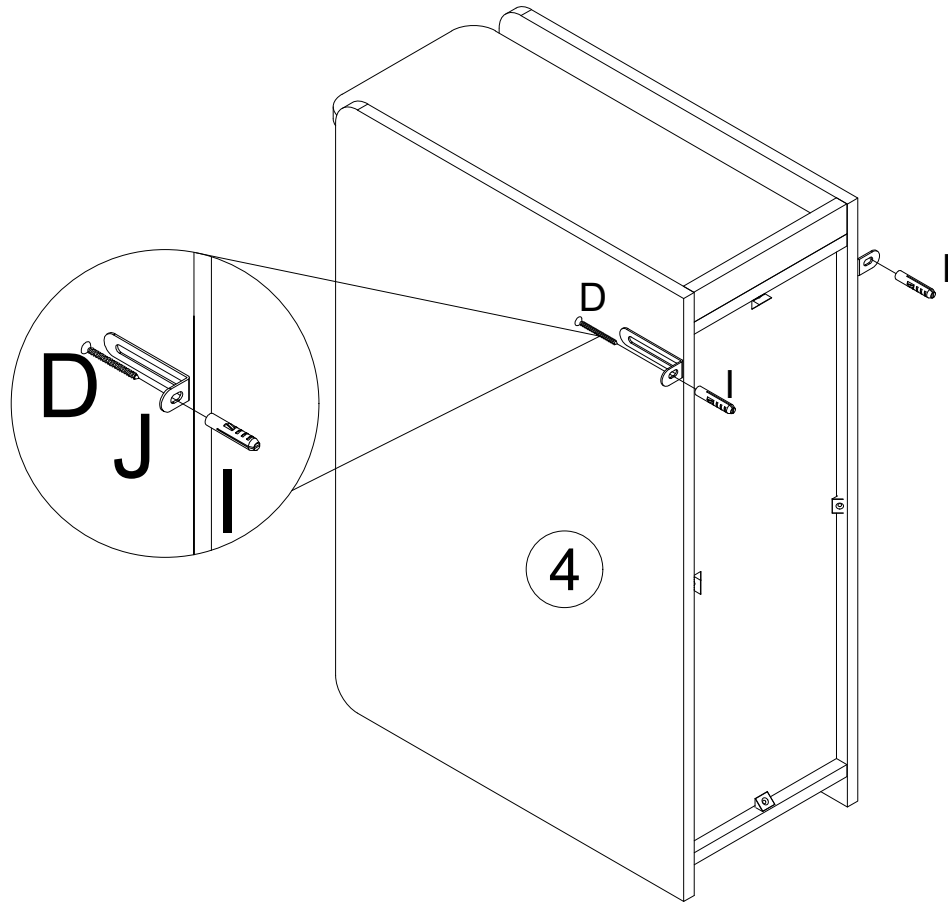
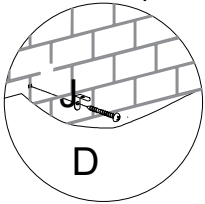
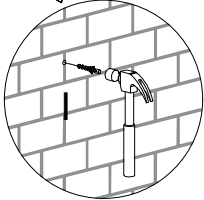
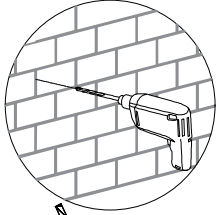


Step 13

D	X 2
	

I	X 2
	

drill hole in wall



Two people work together to move the table.
Make sure you lift it off the ground.
Don't push and pull.