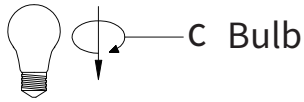
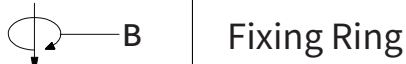


1 × E26 Socket
Max.60W Bulb
(not included)

Installation Steps



Open the packaging and make sure all parts are in good condition.



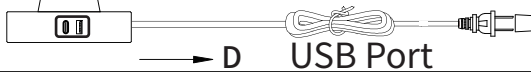
Step 1: Screw Lamp Holder (A) onto Lamp Base.



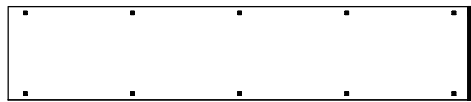
Step 2: Assemble the Lampshade and screw the fixing ring(B)

Step 3: Install a Bulb (C).

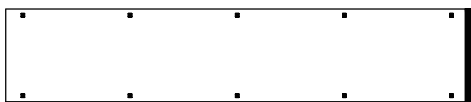
Step 4: Plug in the power source and turn on the light. Two usb-a&usb-c ports(D) are included for charging



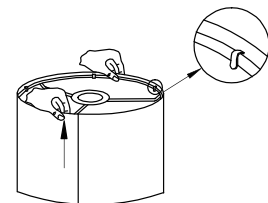
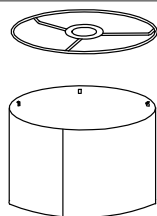
How to assemble the lampshade: put the top ring and bottom ring into built-in clamps, and fix the joining end of the lampshade.



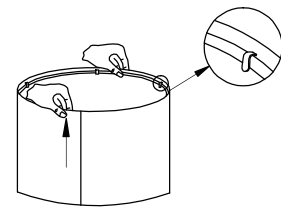
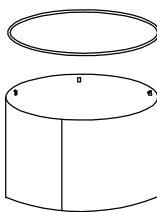
①



②



③



④

