

*Assembly Instructions*

**2' Lighthouse with Base**



*Thank you for choosing*

*We hope that this piece brings you many years of enjoyment!*

## PARTS (included)

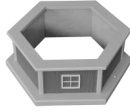
(A) Body



(B) Cap



(C) Base



## HARDWARE (included)

(a) 1½" Screws (6)

(b) Ground Stakes (2)

(c) Square Drive Bit (1)



## TOOLS NEEDED

Screw gun

Hammer

## STEP 1

Set the lighthouse body upside down. Place the base upside down on the bottom of the body aligning the sides as shown. (See photo 1.) Place the six 1½" screws in the predrilled holes in the inside of the base & screw into the body with the screw gun. (See photos 2 & 3.)

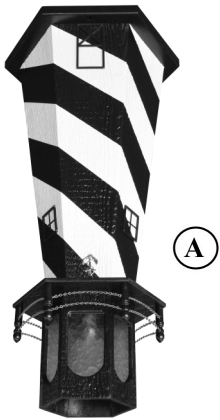


photo 1

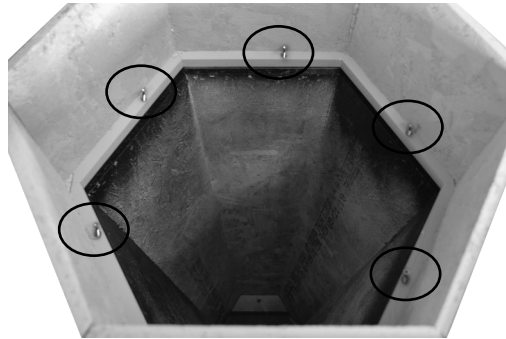


photo 2

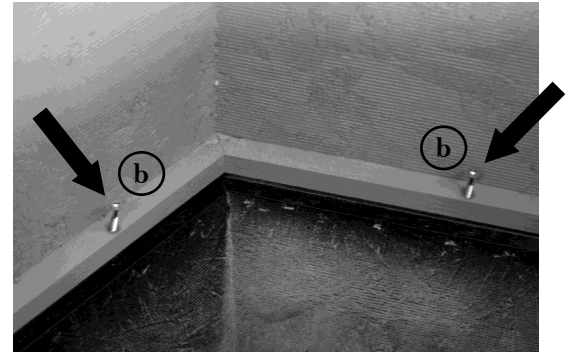


photo 3

## STEP 2

Place the cap on top of the head. (See photo 4.) Take the lighthouse to the desired location & pound in the 2 ground stakes in the predrilled holes in the base ring. (See photo 5.)



photo 4

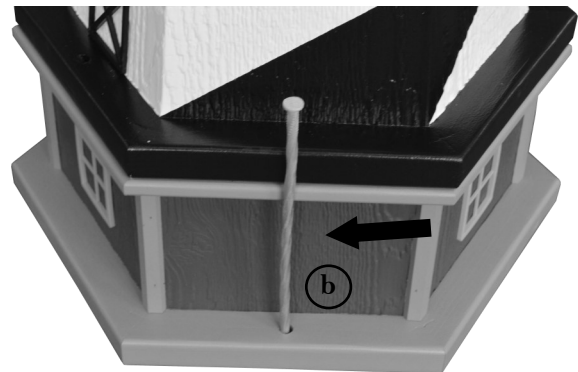


photo 5