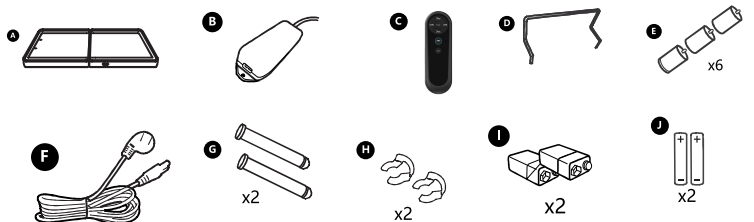
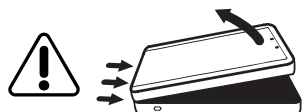


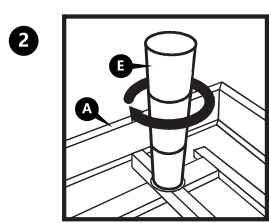
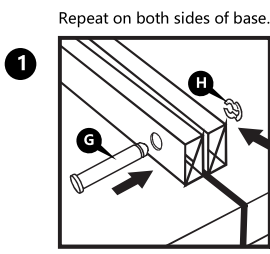
ACCESSORIES



ASSEMBLY INSTRUCTIONS

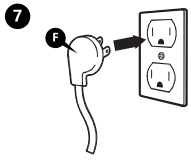
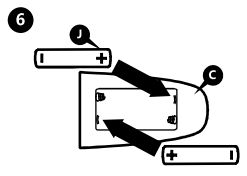
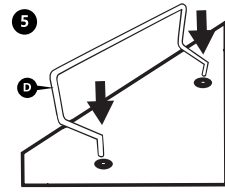
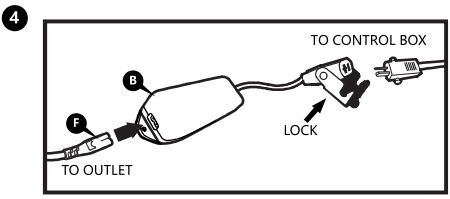
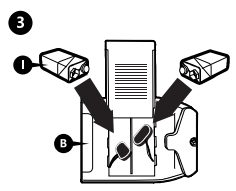


KEEP HANDS CLEAR OF HINGE PINCH POINT
Lay the base flat before unfolding base.

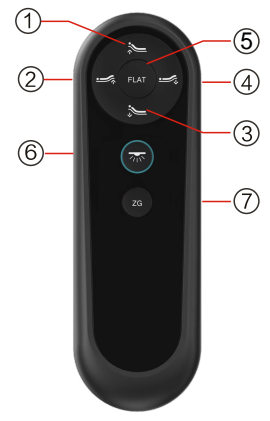


IMPORTANT
All 6 legs must be tightened securely to base before turning base over for use.

WARNING
DO NOT TILT or LEAN base on legs when turning base over.
DO NOT rest bed on its side as damage to USB port will occur.



FUNCTIONS DISPLAY



BUTTON	FUNCTION
1	Press and hold the button to raise the head.
2	Press and hold the button to raise the foot.
3	Press and hold the button to lower the head.
4	Press and hold the button to lower the foot.
5	Press and hold the button to flat position.
6	Press and hold the button to on/off the torch.
7	Press and hold the button to Zero Gravity position.

PAIRING REMOTE TO BASE



How to pair:

Press and hold the button of Head down+foot up(No.3+2), when the buzzer sounds, the pairing is done.
* The pair key of the control box has a reset function;
* The control box is powered on and to reset, and the reset process cannot be interrupted by any key.

SYNCING 2 BASES TO ACT AS ONE

Please repeat the operation as "Pairing remote to base" one more time to the bed you want to sync.