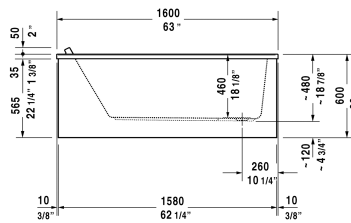
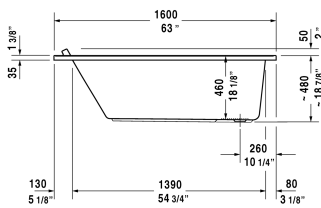
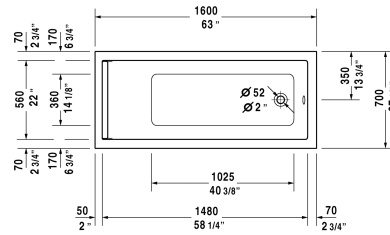
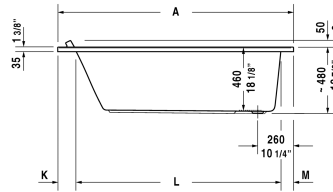
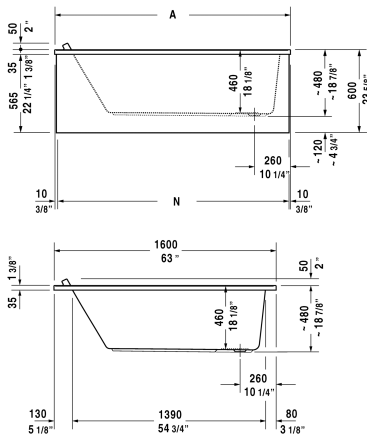
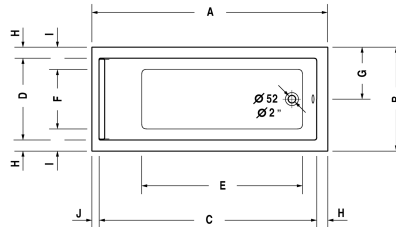
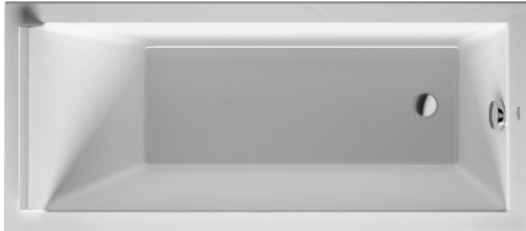


**Bathtub # 70033300000090 / 710333001001090 /
710333001461090 / 710333002001090 / 710333002461090 /
710333002501090 / 710333002521090 / 710333002531090 ...**

< 63" Inch >



Bathtub	Dimension	Weight	Order number
rectangle, built-in or for panel, with one backrest slope, cUPC listed, 1/4" sanitary acrylic			
Colors			
00 White			
Variant			
Base tub	63" x 27 1/2" Inch	57.4 lb	70033300000090
Air-System	63" x 27 1/2" Inch	57.4 lb	710333001001090
Air-System with remote	63" x 27 1/2" Inch	57.4 lb	710333001461090
Jet-System	63" x 27 1/2" Inch	57.4 lb	710333002001090
Jet-System with remote	63" x 27 1/2" Inch	57.4 lb	710333002461090
Jet-System with heater and ozone	63" x 27 1/2" Inch	57.4 lb	710333002501090
Jet-System with remote and heater	63" x 27 1/2" Inch	57.4 lb	710333002521090
Jet-System with remote, heater and ozone	63" x 27 1/2" Inch	57.4 lb	710333002531090
Combi-System	63" x 27 1/2" Inch	57.4 lb	710333003001090
Combi-System with remote	63" x 27 1/2" Inch	57.4 lb	710333003461090
Combi-System with heater	63" x 27 1/2" Inch	57.4 lb	710333003501090
Combi-System with heater and ozone	63" x 27 1/2" Inch	57.4 lb	710333003511090

**Bathtub # 700333000000090 / 710333001001090 /
710333001461090 / 710333002001090 / 710333002461090 /
710333002501090 / 710333002521090 / 710333002531090 ...**

|< 63" Inch >|

Combi-System with remote and heater	63" x 27 1/2" Inch	57.4 lb	710333003521090
Combi-System with remote, heater and ozone	63" x 27 1/2" Inch	57.4 lb	710333003531090
Combi-System with light	63" x 27 1/2" Inch	57.4 lb	710333004001090
Combi-System with light and remote	63" x 27 1/2" Inch	57.4 lb	710333004461090
Combi-System with light and heater	63" x 27 1/2" Inch	57.4 lb	710333004501090
Combi-System with light, heater and ozone	63" x 27 1/2" Inch	57.4 lb	710333004511090
Combi-System with light, remote and heater	63" x 27 1/2" Inch	57.4 lb	710333004521090
Combi-System with light, remote, heater and ozone	63" x 27 1/2" Inch	57.4 lb	710333004531090
Accessory for bath- and whirltub			
Headrest White			790010
Cable-driven waste and overflow			790220
Tile flange			790112
Support frame (included)			790108
Bathtub anchors for mounting and support of bathtubs and shower trays, 3 pieces			790103
Stereo transducers (speakers) for bathtubs and whirltubs			791818
Suitable panels			
Panel for corner left, for # 7X0333 (63" x 27 1/2")	27 1/8" x 62 5/8" Inch		ST8785
Panel for corner right, for # 7X0333 (63" x 27 1/2")	27 1/8" x 62 5/8" Inch		ST8780
Panel for back-to-wall, for # 7X0333 (63" x 27 1/2")	27 1/8" x 62 1/4" Inch		ST8775
Panel for niche (alcove), for # 7X0333 (63" x 27 1/2")	62 5/8" Inch		ST8937

All drawings contain the necessary measurements which are subject to standard tolerances. They are stated in inch & mm and are non-binding. Exact measurements, in particular for customized installation scenarios, can only be taken from the finished ceramic piece.