

OWNER'S MANUAL

MODEL NOs.
T8101
527.26043

WARRANTY

Actual product may
differ slightly from that
shown in illustrations.

READ ASSEMBLY &
OPERATING INSTRUCTIONS
AND ALL SAFETY
INFORMATION CAREFULLY!

TABLE TENNIS CONVERSION TOP FOR POOL TABLES

Questions, Concerns, Comments?
Need to Purchase Replacement Parts?
Need Product Assistance?

Escalade Sports, a diversified manufacturer of fine sporting goods equipment, is here to help you in any way possible to make your experience with this product a pleasurable one for you and your family. We always try hard to make sure that our products are manufactured free from defects in material and workmanship to provide a lifetime of family fun. If you find any problems with your new product such as missing parts, damaged parts, or incorrectly manufactured parts,

Please Do Not Return This Product to the Store!

Please contact our consumer affairs department at:

Phone	1-866-873-3528	Toll – Free!
Fax	1-866-873-3533	Toll – Free!
E-mail	tabletennis@escaladesports.com	

Additionally, we highly recommend that you visit our web site for additional information or possible solutions for your concern which include:

On-Line Trouble Shooting *** On-Line Parts
Requests *** Technical Assistance *** Frequently
Asked Questions *** Additional Escalade
Product Information

Please visit our Web site at:

www.escaladesports.com

Mailing Address:

Escalade Sports
PO Box 889
Evansville, IN 47706

CAUTION

THIS IS A GAME TABLE. DO NOT SIT, STAND, LEAN, WALK OR JUMP ON TOPS! FAILURE TO COMPLY WITH THIS CAUTION COULD RESULT IN PERSONAL INJURY AND/OR PROPERTY DAMAGE!

THIS UNIT IS DESIGNED TO BE LARGER THAN POOL TABLE TOP. THEREFORE, PORTIONS OF THIS UNIT WILL NOT BE SUPPORTED AT THE OUTER EDGES. DO NOT USE THIS UNIT ON POOL TABLES LESS THAN 80 INCHES LONG OR 44 INCHES WIDE!

BOTTOM SIDE OF HALF TOPS #1 SHOWN

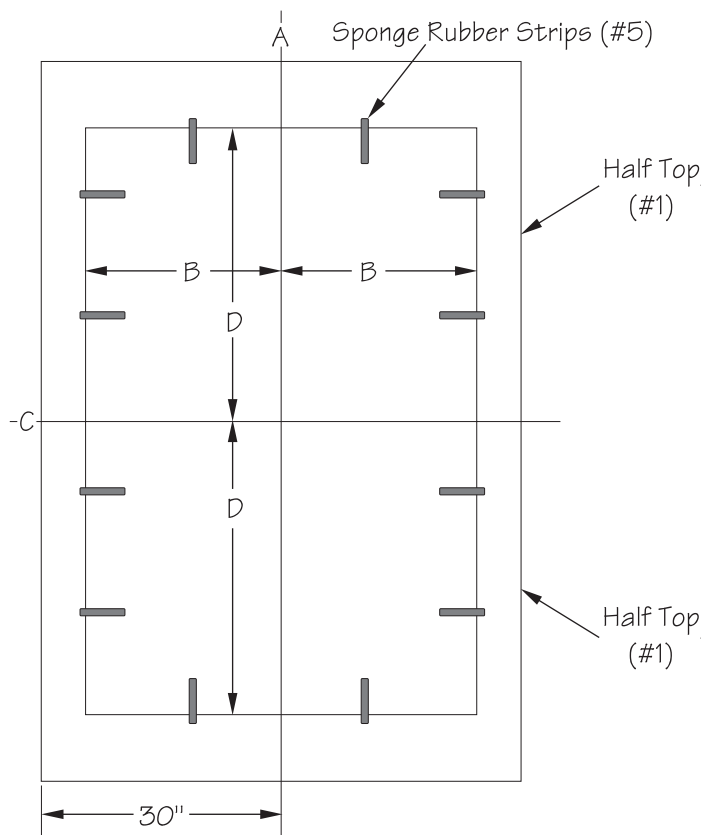


Figure 1

**TOP SIDE OF HALF TOPS #1 SHOWN
WITH POOL TABLE UNDERNEATH.**

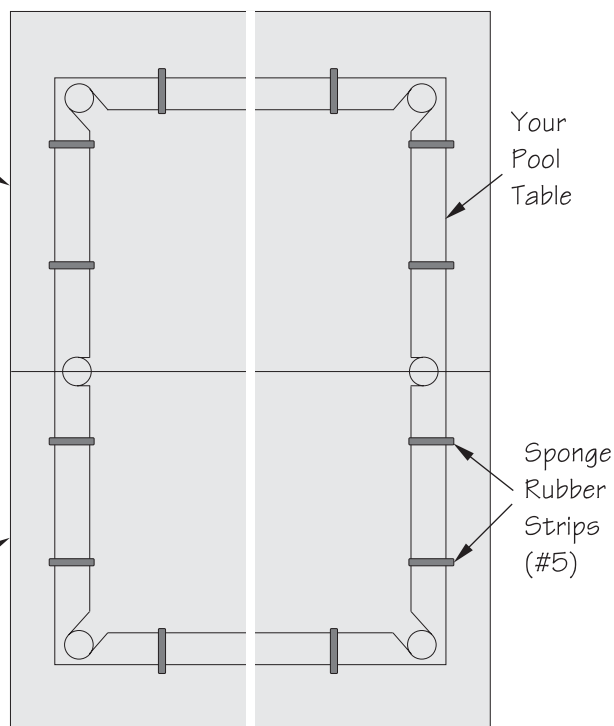


Figure 2

INSTALLATION

1. Determine the placement of sponge rubber strips #5 on the bottom of half tops as follows (Use Figure 1):

- Mark center line (A) along the length of conversion top. Top is 60 inches wide. Center line (A) is 30 inches in from either side.
- Measure the width of your pool table.
- Divide the width of your pool table in half and mark the bottom of the conversion top this amount (B). Measure from center line (A) out toward both sides. These mark the sides of your pool table.
- Measure the length of your pool table.
- Divide length of pool table in half and mark the bottom of the conversion top this amount (D). Measure from center line (C) (where two half tops touch) out towards both ends. These mark the ends of your pool table.
- Temporarily tape sponge rubber strips #5 to bottom surface of conversion top using masking tape (not included). Space them evenly apart as shown above. (Do not peel backing off strips yet. First check for correct placement. See next step.)

2. Set one half top on your pool table to check for correct placement of sponge rubber strips #5.

- If correctly placed, remove top from pool table, peel backing from sponge rubber strips #5 and apply firmly to back of conversion top. Repeat on other half top. Place both half tops on pool table.

Replacement Parts List

Item #	Part #	Description	Qty.
1	4A-6536-02	Half Top	2
2	2S-6384-00	Side Rail (48" Long)	4
3	2S-6385-00	End Rail (53" Long)	2
4	2S-6429-02	Stiffener Rail	2
5	BZ-412	Sponge Rubber Strip	12
6	1B-6482-00	#8 X 13/32 Phillips Hex Hd	48
7	2L-6713-02	This Owner's Manual	1
8	3M-6494-00	Corner Cap	4
9	701-105	#8 X 9/16 Phillips Hex Hd	12

- If incorrectly placed, mark the correct position on bottom of the conversion top, remove top from pool table, and apply strips. Repeat on other half. Set both half tops on pool table.

3. Install net brackets and net (not furnished with this table).

MAINTENANCE

- We do not recommend the use of wax on this top. Wax tends to make the top excessively shiny.
- To clean, use a warm, damp cloth and **WIPE GENTLY! DO NOT WIPE EXCESSIVELY! DO NOT USE DETERGENTS OR EXCESSIVE AMOUNTS OF WATER!**
- **NOTE:** Changing weather conditions may cause a slight warpage in the playing surface of the table. This will not affect playing conditions. Playing surface will return to its original condition as the weather stabilizes.

STORAGE

This table **MUST** be stored indoors.

LIMITED 90 DAY WARRANTY

Manufacturer warrants to the original retail purchaser, this product to be free from defects in material and workmanship for a period of ninety (90) days from the date of purchase.

Should this product become defective due to material or workmanship within the warranty period, contact our Customer Service Department for repair or replacement at our option.

This warranty is not transferable and does not cover normal wear and tear, bowing of the table or damage caused by improper handling, installation or use of this product. This warranty is also void if product is in any way abused, damaged, or modified from its original state, or if used for other than residential use.

This warranty gives you specific legal rights, and you may have other rights which vary from state to state.