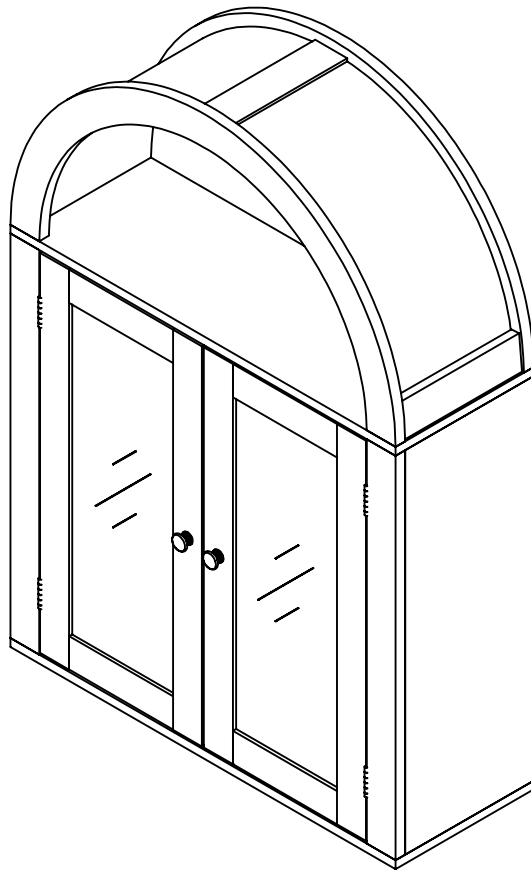


# INSTRUCTION MANUAL

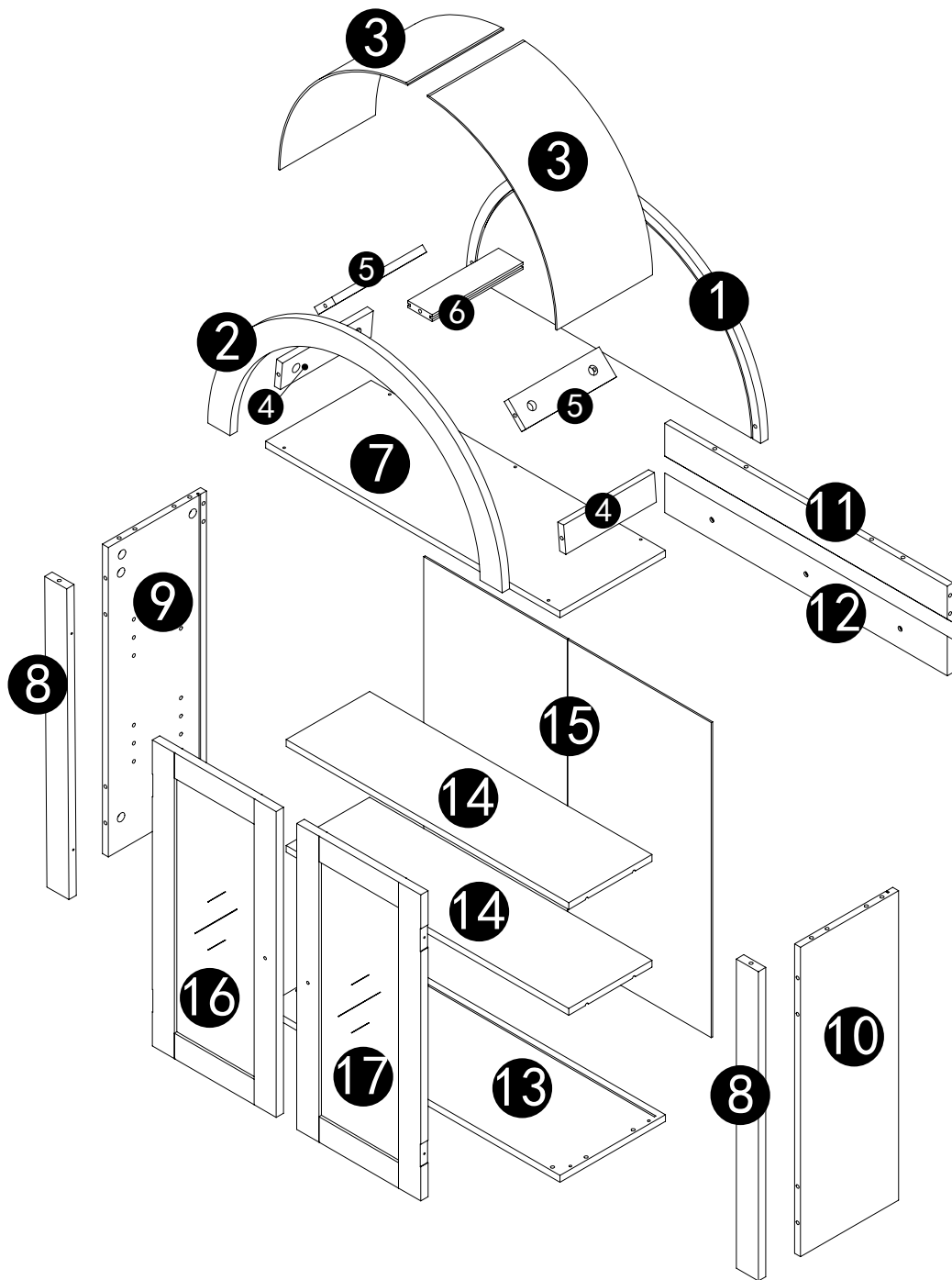
## Drawer Dresser Cabinet



 [wolfthontech1@gmail.com](mailto:wolfthontech1@gmail.com)

Please choose SMS or email as your first choice for communicating with us.

# Panel List



# PRE-INSTALLATION

## GRAB YOUR TOOLS



Phillips Screwdriver



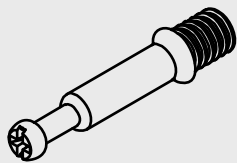
2 Persons Assembly



Up to 40 Minutes For Assembly

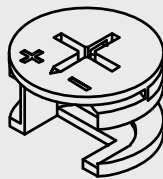
## Hardware List

A



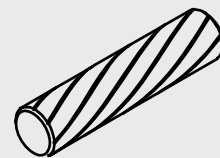
22PCS(M6\*35)

B



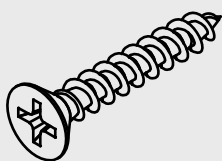
22PCS(M15\*10)

C



20PCS( $\Phi$ 6\*30)

D



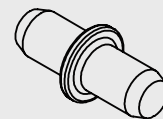
9PCS(M4\*35)

E



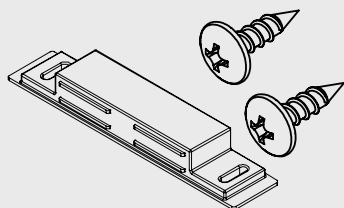
26PCS(M3.5\*12)

F



8PCS

G



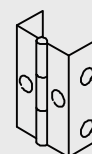
1PCS

H



2PCS

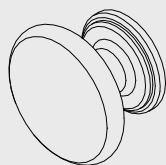
I



4PCS

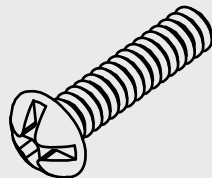
# Hardware List

J



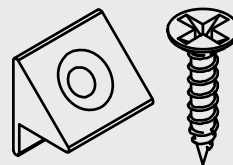
2PCS

K



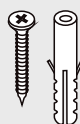
2PCS

L



4PCS

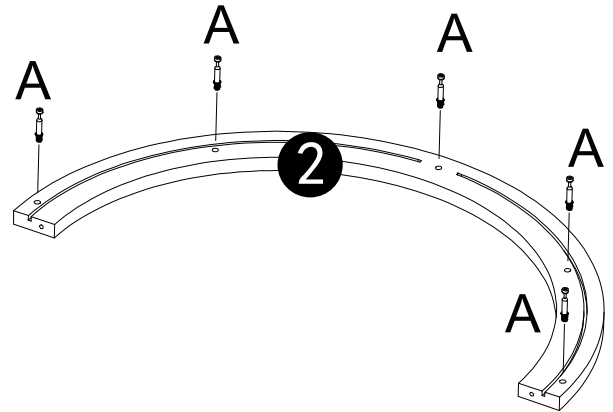
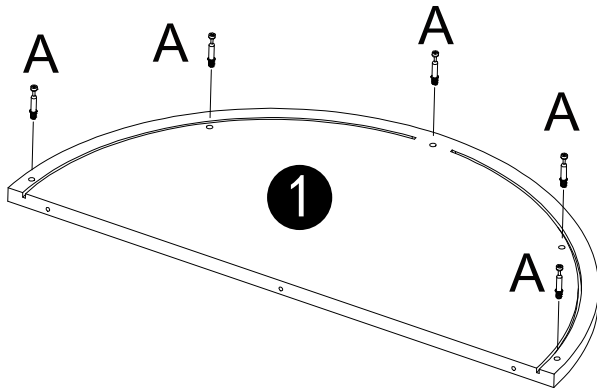
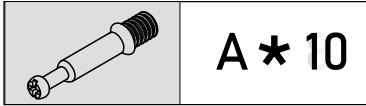
M



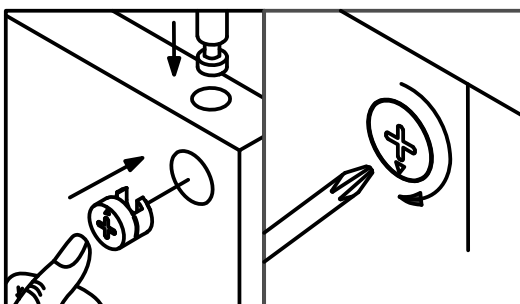
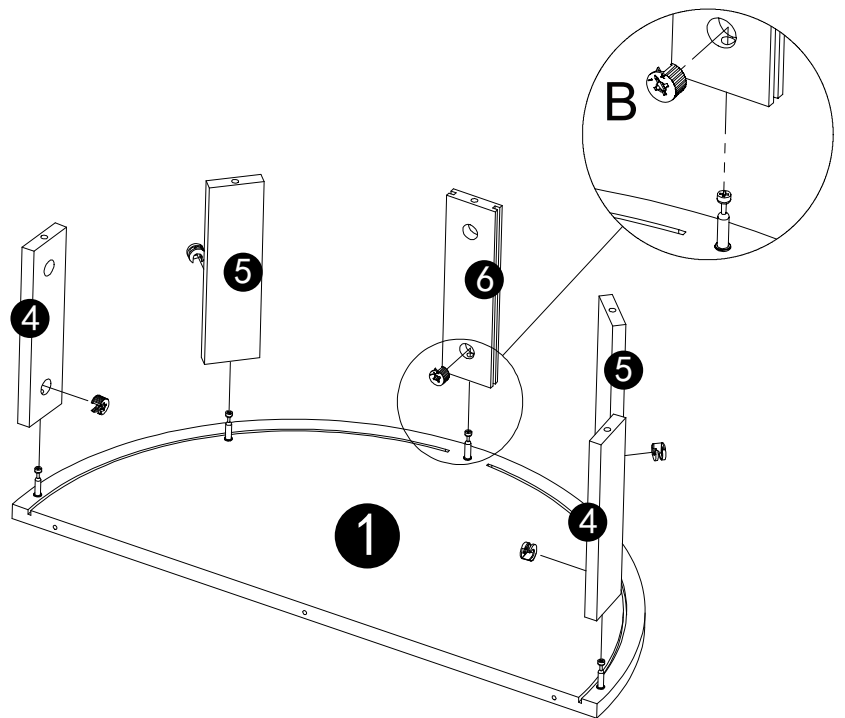
3PCS

# Assembly Instructions

## STEP 1

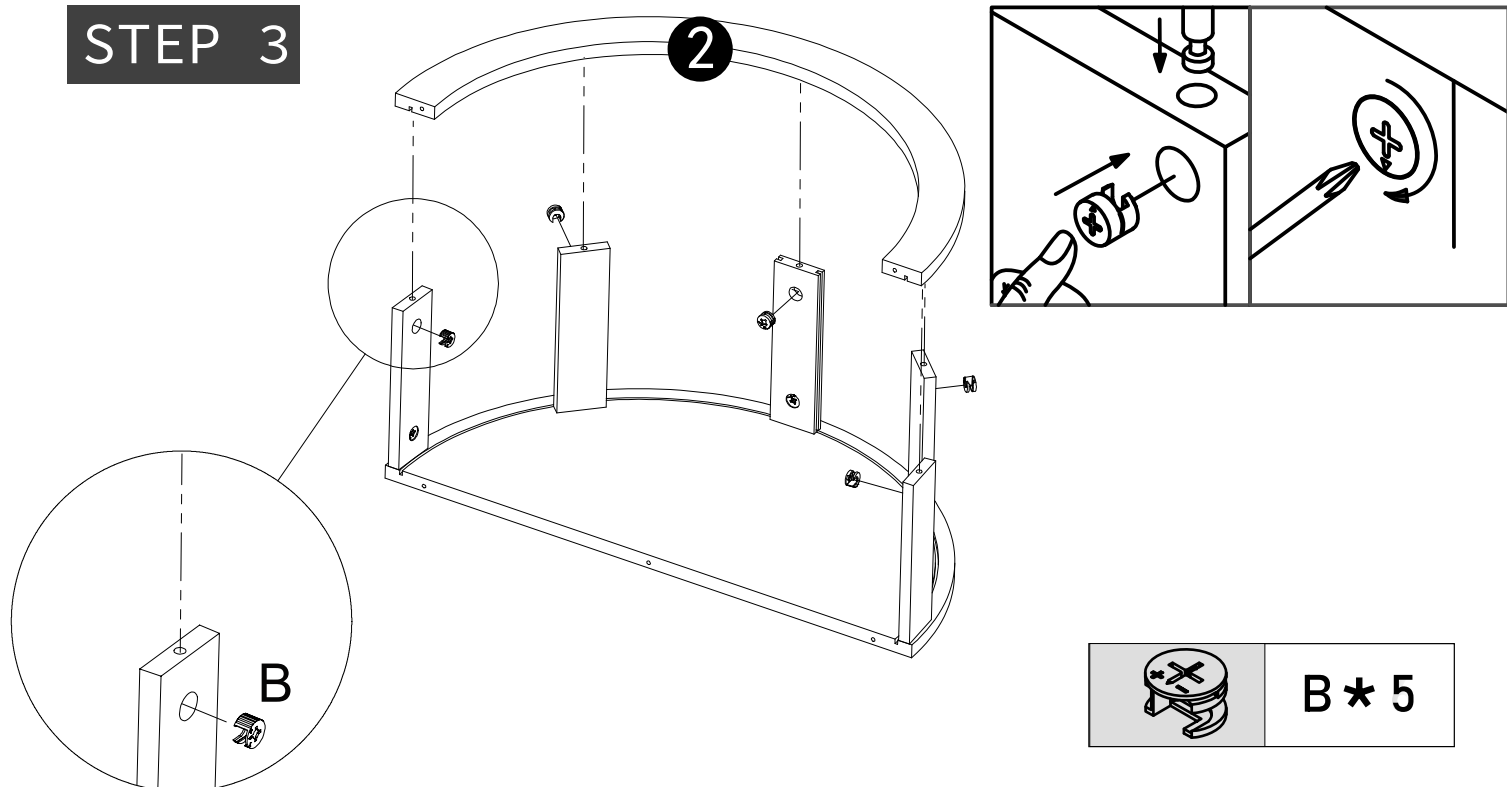


## STEP 2

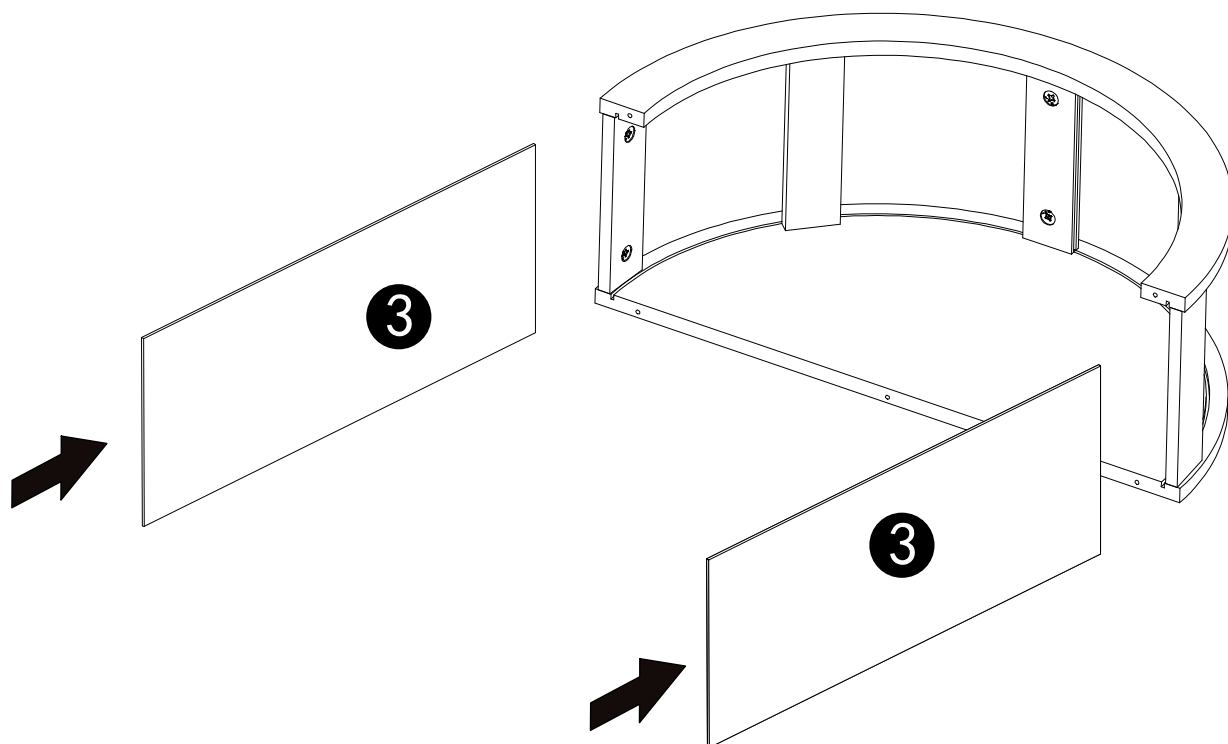


# Assembly Instructions

## STEP 3

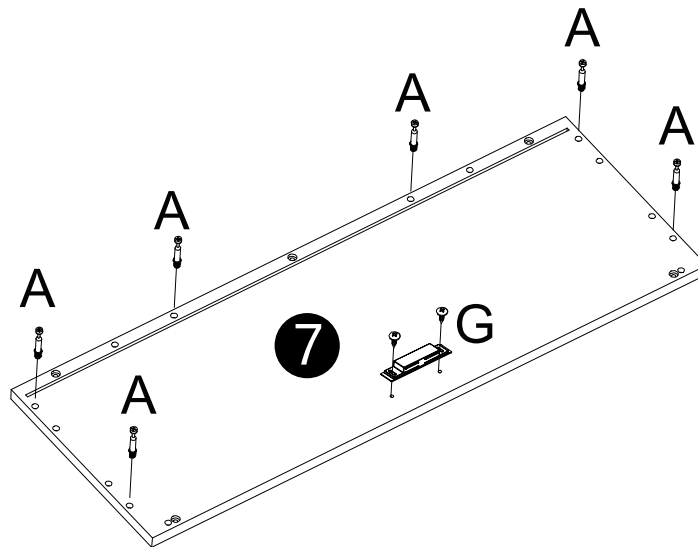
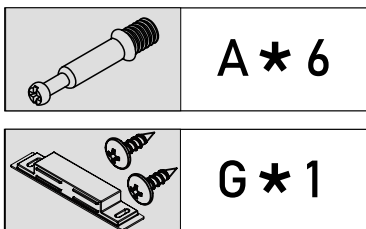


## STEP 4

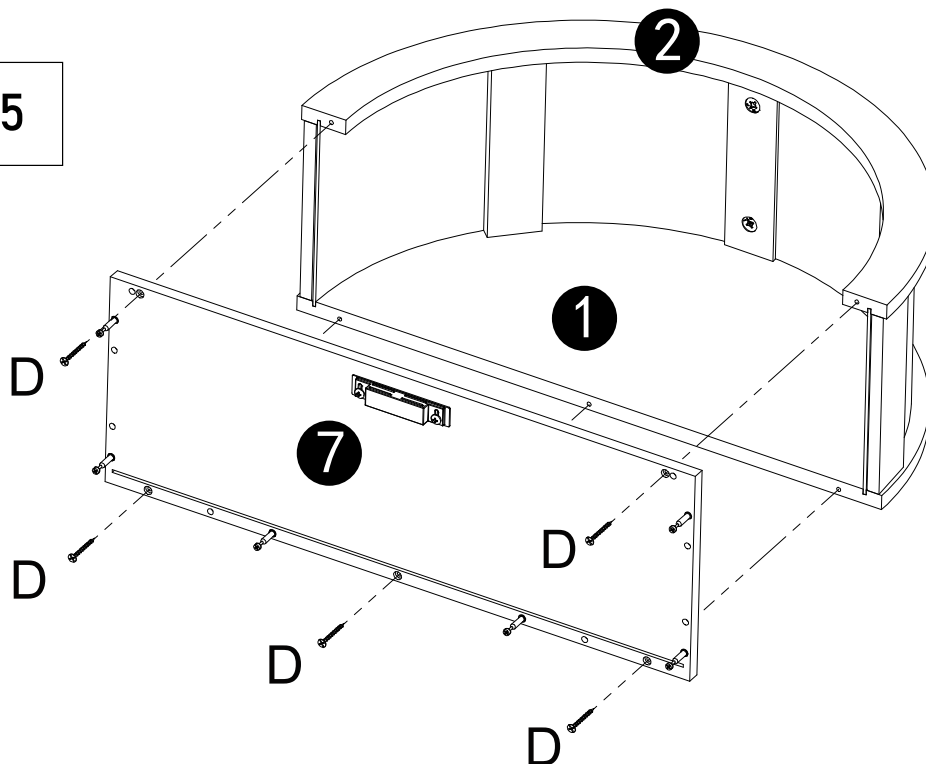


# Assembly Instructions

## STEP 5

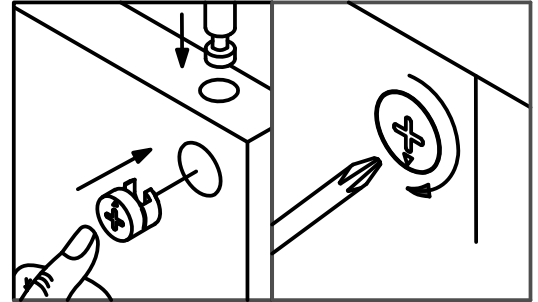
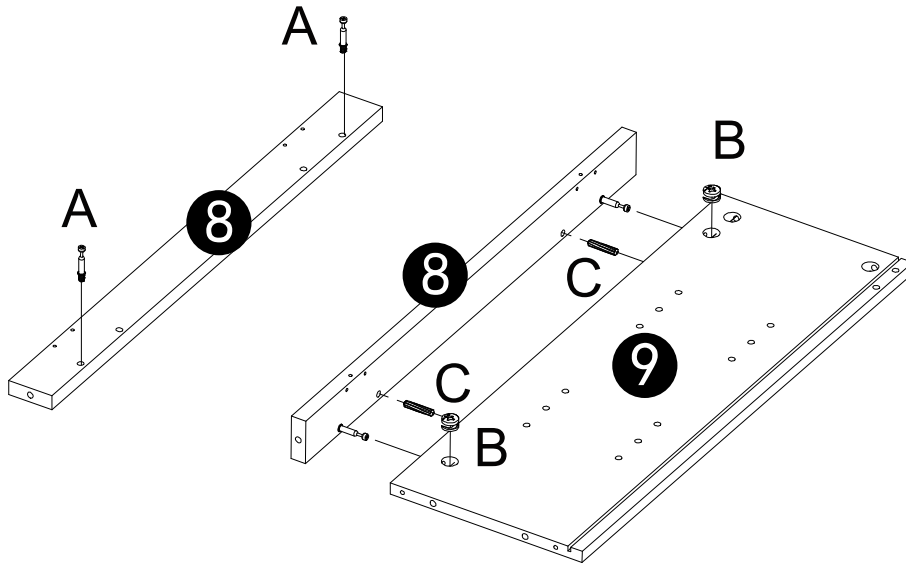


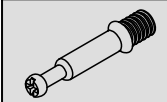

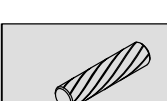
## STEP 6



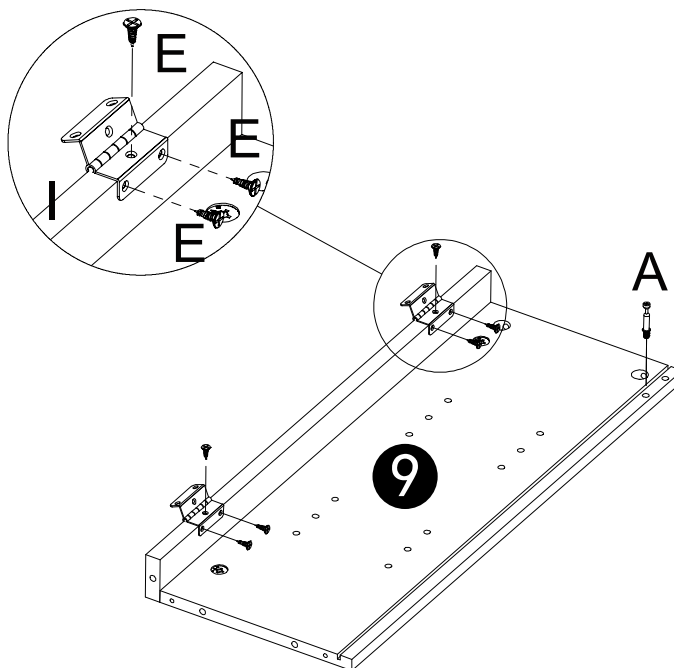
# Assembly Instructions

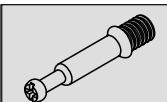

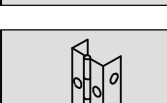
## STEP 7



	A * 2
	B * 2
	C * 2

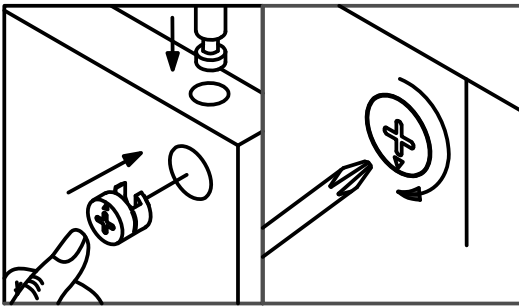
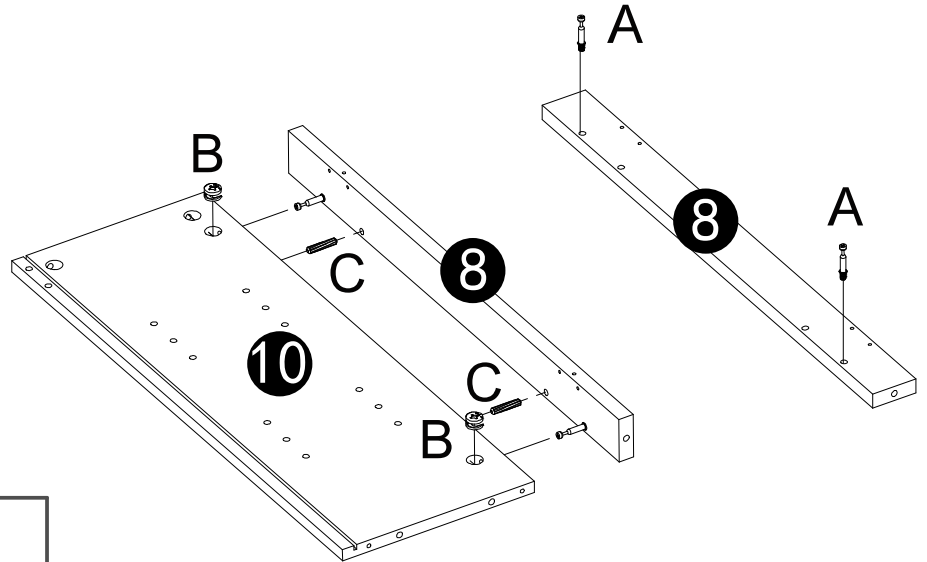
## STEP 8



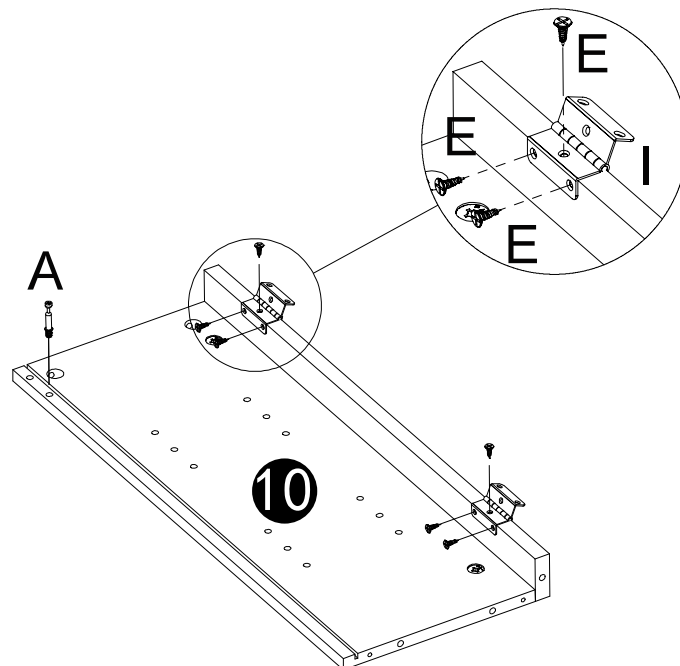
	A * 1
	E * 6
	I * 2

# Assembly Instructions

## STEP 9

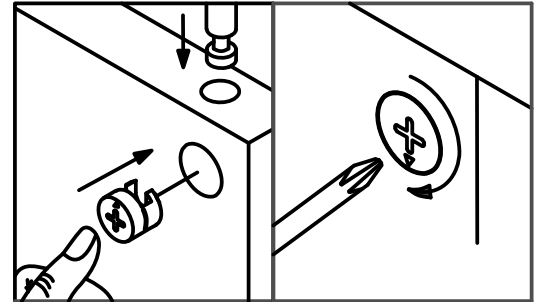
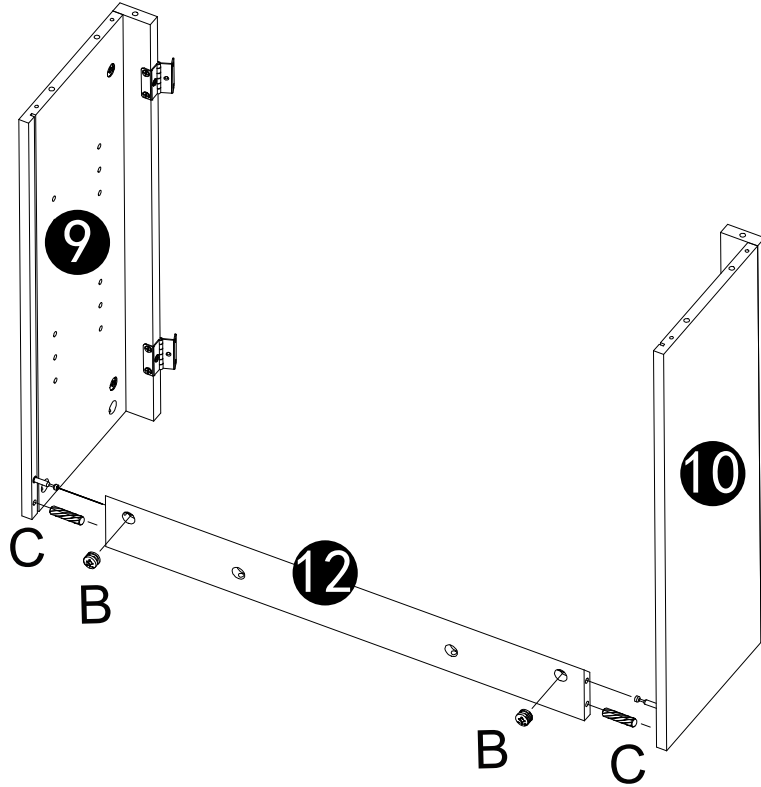




## STEP 10




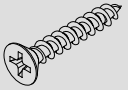
# Assembly Instructions

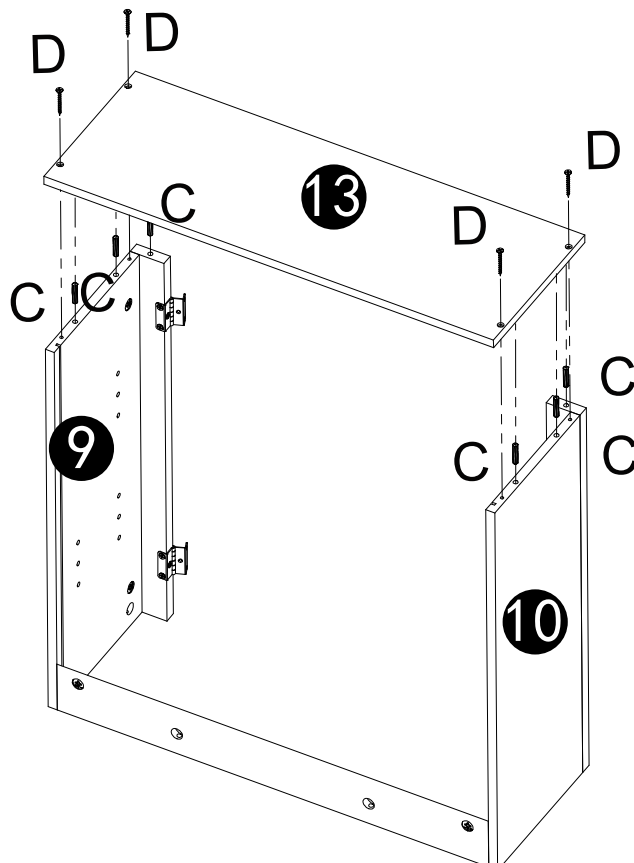
## STEP 11



	B * 2
	C * 2

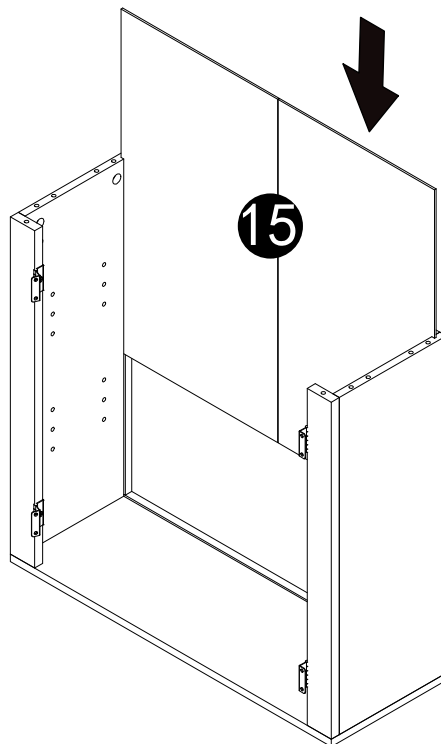
## STEP 12

	C * 6
	D * 4

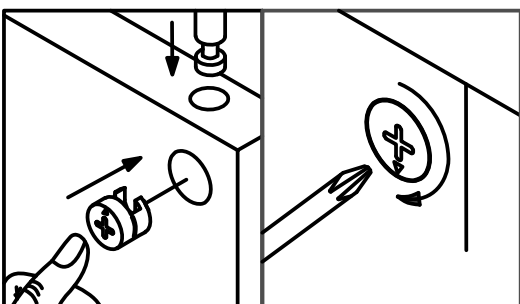
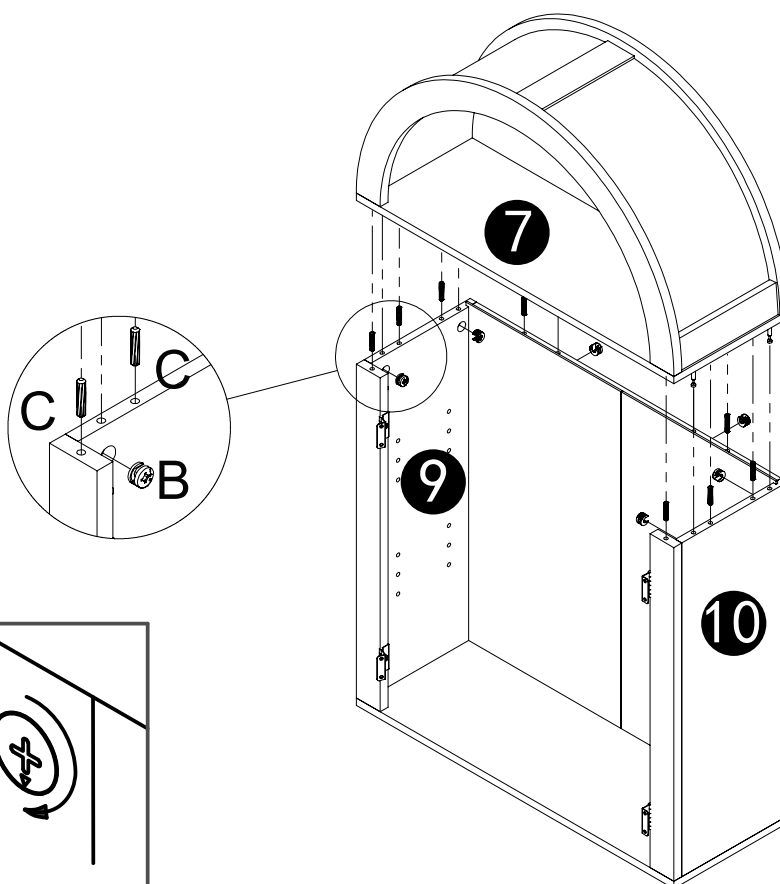


# Assembly Instructions

## STEP 13

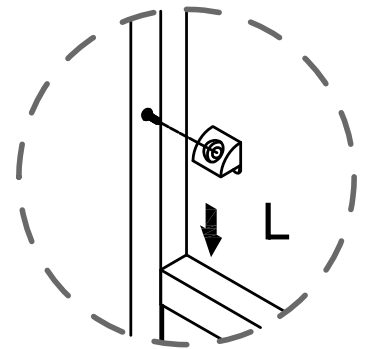
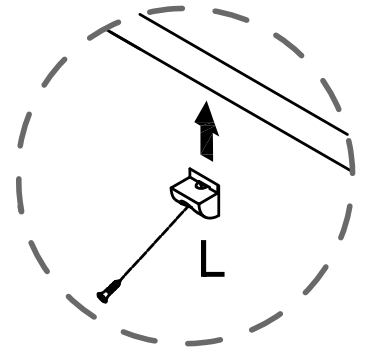
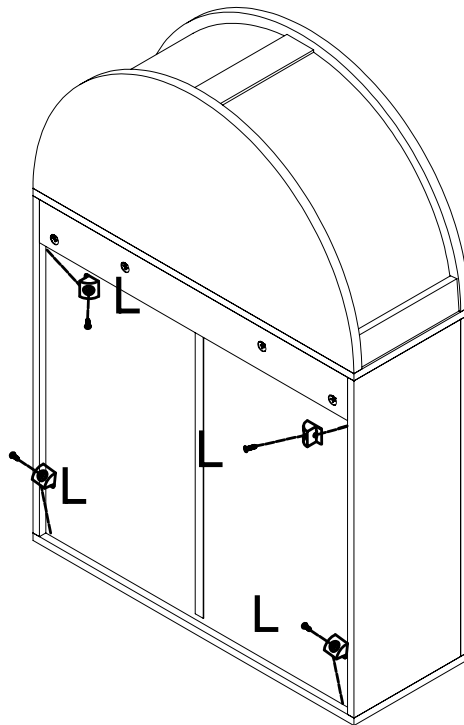


## STEP 14

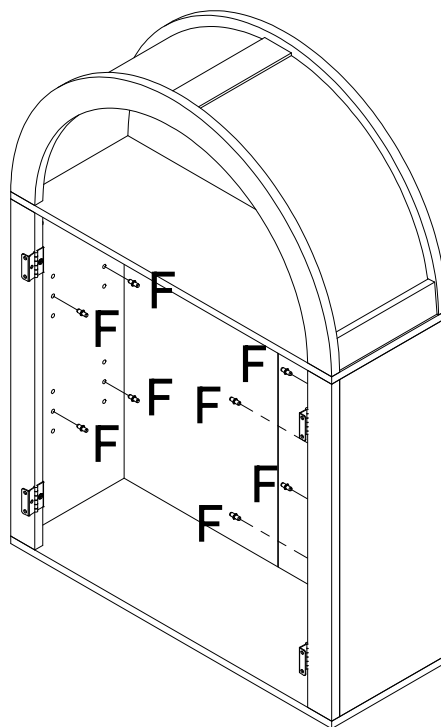


# Assembly Instructions

## STEP 15

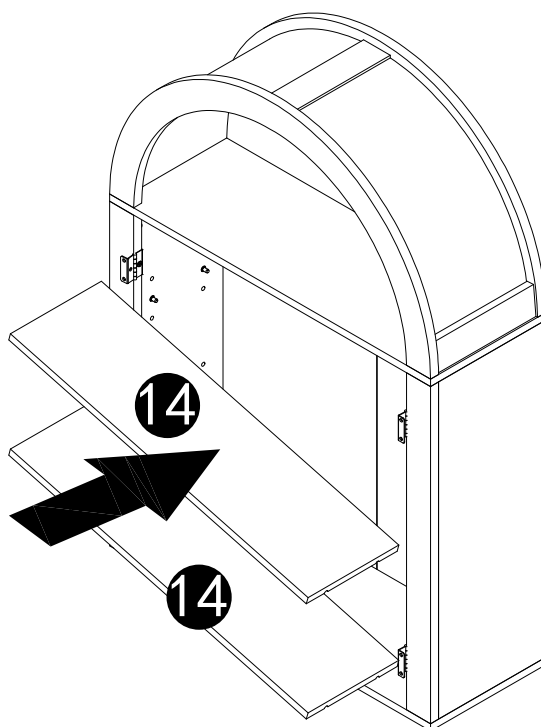


## STEP 16

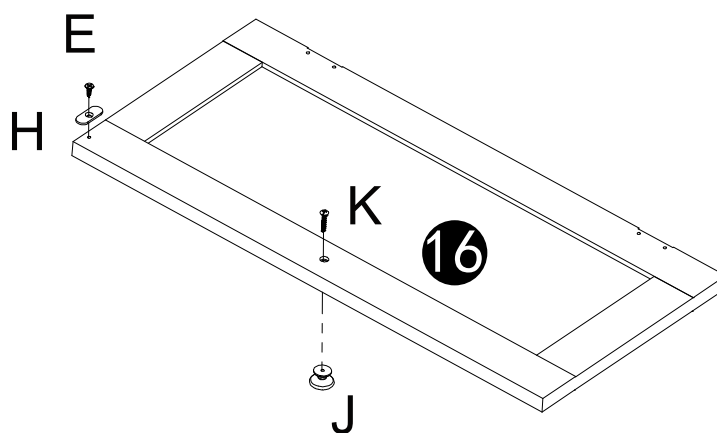


# Assembly Instructions

## STEP 17

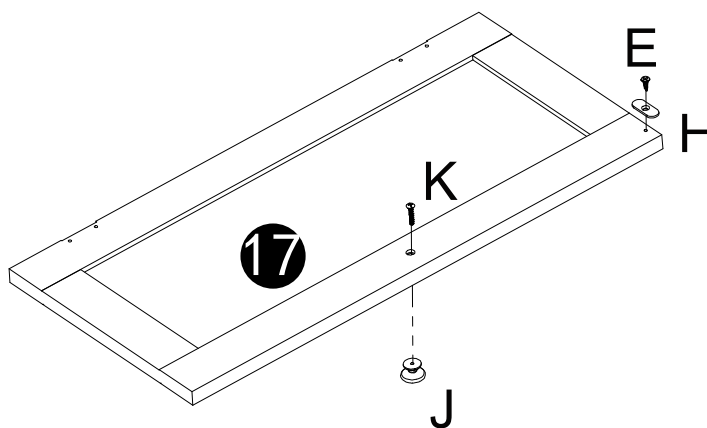
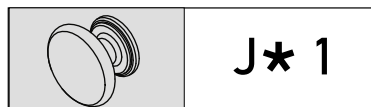
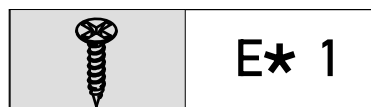


## STEP 18

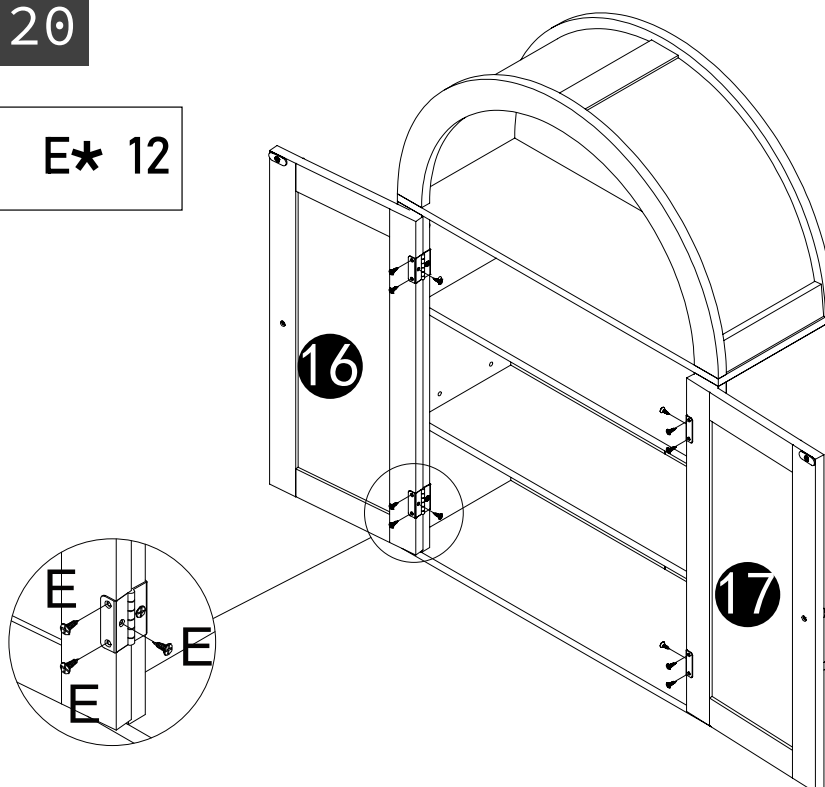


# Assembly Instructions

## STEP 19

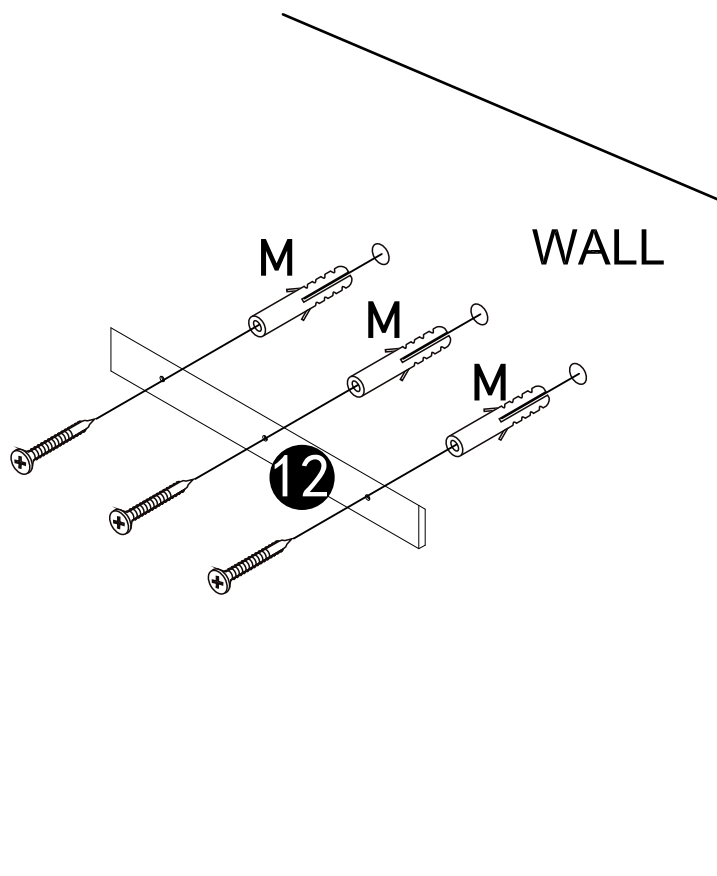


## STEP 20

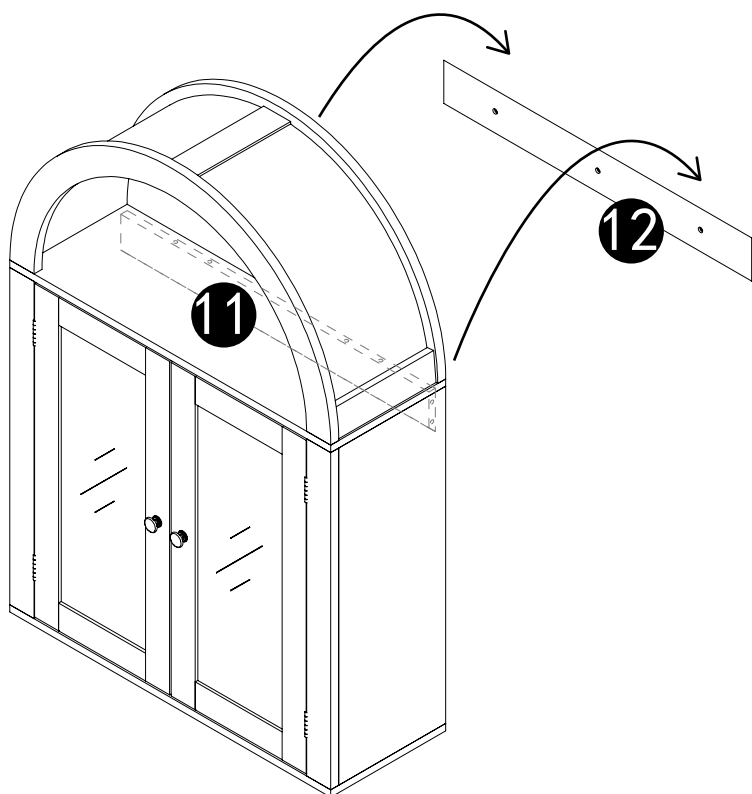


# Assembly Instructions

## STEP 21



## STEP 22



## HINGE ADJUSTMENT GUIDE

**EN** It may be necessary to adjust the hinges so that the doors align. Use the instructions below as a guide.

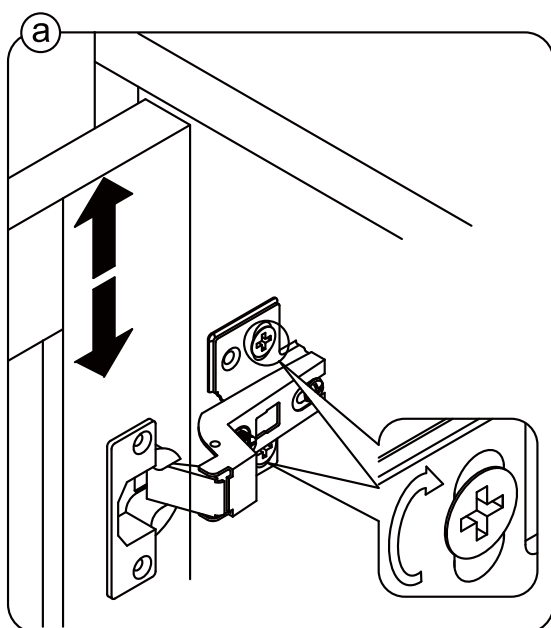
**FR** Il est parfois nécessaire d'ajuster les charnières pour un meilleur alignement des portes. Servez-vous des instructions ci-dessous comme guide.

**ES** Puede que sea necesario ajustar los quicios de forma que se alineen las puertas. Use las instrucciones que aparecen debajo como guía.

**PT** Pode ser necessário ajustar as dobradiças para que as portas fiquem alinhadas. Utilizar as instruções abaixo como guia.

**DE** Möglicherweise müssen Sie die Scharniere so einstellen, dass die Türen ausgerichtet sind. Verwenden Sie die nachstehenden Anweisungen als Leitfaden.

**IT** Potrebbe essere necessario regolare le cerniere in modo che le porte siano allineate. Per fare ciò attenersi alle istruzioni sottostanti.



**EN** To adjust the door vertically loosen the screw as shown and move up and down as needed.

**FR** Si vous souhaitez régler la porte verticalement, desserrez la vis comme indiqué et déplacez la porte de haut en bas selon les besoins.

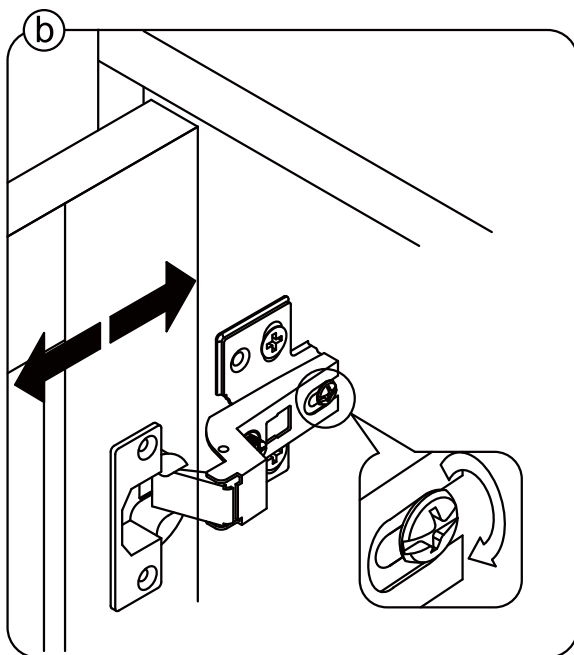
**ES** Para ajustar la puerta verticalmente afloje el tornillo tal y como se muestra y muévalo hacia arriba o hacia abajo según sea necesario.

**PT** Para ajustar a porta na vertical, soltar o parafuso mostrado e mover-se para cima e para baixo, conforme necessário.

**DE** Um die Tür vertikal auszurichten, lösen Sie die Schraube wie abgebildet und bewegen Sie sie nach Bedarf nach oben oder nach unten.

**IT** Per allineare la porta verticalmente allentare la vite come mostrato e spostarla in alto o in basso secondo necessità.

## HINGE ADJUSTMENT GUIDE



**EN**\_To adjust the gap from the door to the main frame turn the screw clockwise or anti-clockwise as needed.

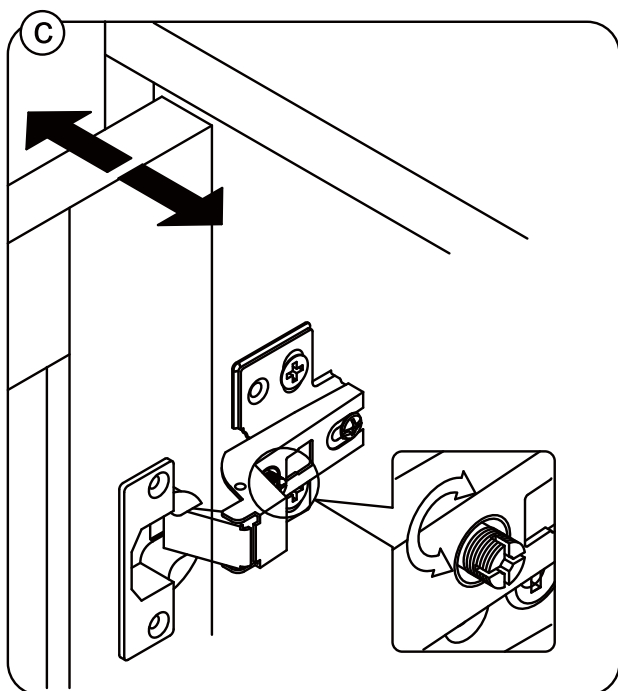
**FR**\_Si vous souhaitez ajuster l'écart entre la porte et le cadre principal, tournez la vis dans le sens des aiguilles d'une montre ou dans le sens inverse, si nécessaire.

**ES**\_Para ajustar el espacio desde la puerta al marco principal, gire el tornillo en sentido horario o antihorario, según se necesite.

**PT**\_Para ajustar o espaço entre a porta e o quadro principal, rode o parafuso no sentido dos ponteiros do relógio ou anti-horário, conforme necessário,

**DE**\_Um den Abstand von der Tür zum Hauptrahmen auszurichten, drehen Sie die Schraube je nach Bedarf im oder gegen den Uhrzeigersinn.

**IT**\_Per regolare lo spazio tra la porta e il telaio principale, avvitare o svitare la vite secondo necessità.



**EN**\_To adjust the door laterally adjust the screw as shown by turning clockwise or anti-clockwise.

**FR**\_Si vous souhaitez ajuster la porte latéralement, ajustez la vis comme indiqué en tournant dans le sens des aiguilles d'une montre ou dans le sens inverse des aiguilles d'une montre.

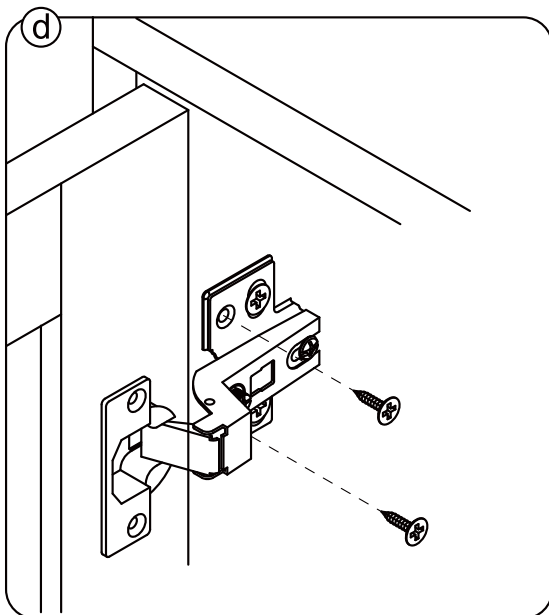
**ES**\_Para ajustar la puerta lateralmente ajuste el tornillo tal y como se muestra girándolo en sentido horario y anti-horario.

## HINGE ADJUSTMENT GUIDE

**PT\_**Para ajustar a porta lateralmente ajustar o parafuso, conforme indicado, rodando no sentido dos ponteiros do relógio ou no sentido anti-horario.

**DE\_**Um die Tür seitlich auszurichten, stellen Sie bitte die Schraube wie abgebildet durch Drehen im oder gegen den Uhrzeigersinn ein.

**IT\_**Per allineare la porta lateralmente regolare la vite come mostrato, avvitandola o svitandola.



**EN\_**Please fix other screws.

**FR\_**Merci de serrer les autres vis.

**ES\_**Fije los demás tornillos.

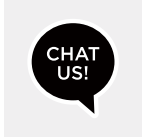
**PT\_**Por favor fixe os outros parafusos.

**DE\_**Befestigen Sie bitte die anderen Schrauben.

**IT\_**Fissare le altre viti.

# HELP CENTER

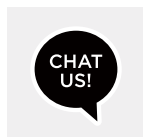
Question about your product? We're here to help. Visit us at:



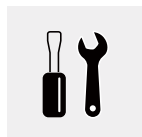
Chat Support



Product inquiry



Orders FAQ



Product Assembly



Returns & Refunds

## WE STAND BEHIND THE QUALITY OF OUR FURNITURE

1. If you have any issues with your item, please let us know! We will always do our best to come up with a solution that you will be happy with.
2. Please get in touch with our customer service team before returning the product.
3. And please do not throw away the original box(es) if you have not finished assembling and confirmed no quality issues.

Length of return period:

You can return items within 30 days of purchase. In the meanwhile, everything you purchased from us comes with a one-year warranty.

Who is responsible for the return shipping fee:

We will cover the return shipping fees if:

1. Your item has a manufacturing defect in materials or workmanship. For example, torn wicker or misaligned screw holes. We will send you a prepaid shipping label after you send us photos or videos of the defect.
2. Your item has been damaged in transit. For example, glass is broken or product is damaged. We will send you a prepaid shipping label after you send us photos of the damage.
3. You receive the wrong box(es) due to a warehouse error. We will send you a prepaid shipping label after you send us photos of the wrong SKU numbers on the outer box(es).
4. One or more boxes are lost in transit. We will send you a prepaid shipping label if you no longer want the item.

\* However, we still hope to work with you for a better solution instead of a return. Please don't hesitate to contact our customer service team.

Customer will cover the return shipping fees if:

- 1.You don't like the product(s) after receiving the box(es).
- 2.You no longer need the product(s) but have received the box(es).
- 3.You buy the product(s) by mistake but have received the box(es).
- 4.Order/shipment cancellation failed, and you have received the box(es).

### **Return Request**

In order to get a full refund as described in this return policy, all items must be:

- 1.In a brand new/unused condition.

Please provide photos before and after packaging.

- 2.When returning, all accessories and parts must be firmly packed in all original packaging. If your return does not meet these requirements, you may not receive a full refund.

### **When will I be refunded?**

The refund is issued once the goods have been returned to our warehouse.

What if the product is damaged/defective outside of the valid return period?

We want you to be a happy customer. Please reach out to us via email, and we will work on a solution to ensure your satisfaction.

# After Sales Service

If any problem occurs, you can check the manual for troubleshooting in detail, or contact to our customer service on Amazon.

To contact authorized Amazon seller, please following steps:

<b>Step1</b>	Go to Your Orders. Find your order in the list.
<b>Step2</b>	Click "Ask a question". (Or go to the product detail page, select the name of the seller. On the next page, select "Ask a Question").
<b>Step3</b>	Select the product and tap "Other" options in the Seller Messaging Assistant chat.
<b>Step4</b>	Send the message to us for after-sales support.

We always work hard to serve you and provide you a better customer experience.  
Customer service:

Customer service: [Wolfthontech1@gmail.com](mailto:Wolfthontech1@gmail.com)

Please attach follow purchase info in the message:

Order ID:

\_\_\_\_\_

Model:

\_\_\_\_\_

Purchase Date:

\_\_\_\_\_

Buyer Name:

\_\_\_\_\_

Please feel free to send us the text or email. We will reply to you within 24 hours.  
Also please feel free to contact us if you have received the defective items.

**SAVE THESE INSTRUCTIONS**