



## Insta-Mount® Arch Shower Slide Bar

**Determine the best location for mounting. Make sure that your Shower Hose connected to water source can easily reach Hand Shower Bracket of Slide Bar at its lowest and highest positions**

This Shower Bar can be freely mounted at desired height, below shower arm, on right or left, or on adjacent wall. Use drill-free installation option to mount on any surface, even glass, or choose traditional installation with screws & anchors (included).

### To Identify the Most Convenient & Practical Position, Consider:

a) direction of water flow, b) location of surrounding bath fixtures that may loose accessibility, obstruct installation, or limit the movement range of hand shower bracket and soap dish, c) height/reach requirements of each user and their individual showering/bathing needs, and d) space efficiency and mobility in the shower.

Before mounting Slide Bar, test several positions by placing Slide Bar against surface at various locations and heights. Move the Hand Shower Bracket UP and DOWN to explore maximum movement range and height options. Swivel Soap Dish to left and right to determine its best position. Once final position is selected, mark exact installation area of both Slide Bar Endcaps and choose desired installation option.

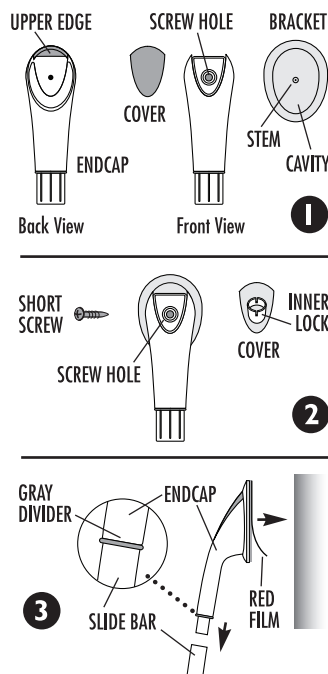
## Tools-Free Installation with Silicone Adhesive Brackets

### Connect each Bracket to Endcap by following steps below:

1. Place back side of Endcap over matching-shape Bracket Cavity with its Stem fully inserted into Screw Hole of Endcap from back side (Fig. 1).
2. Insert Short Screw into front Screw Hole and screw it into Bracket Stem using Phillips screwdriver (Fig. 2). Then close Endcap Cover by pressing its Inner Lock over Screw Hole projection. If needed, Endcap Cover can be snapped off by pushing on its Upper Edge from back (Fig. 1).
3. Insert both Endcaps fully into Slide Bar ends with each Slide Bar end pressing firmly against Gray Divider on each Endcap. Make sure that there are no gaps on either side of Gray Divider (Fig. 3).

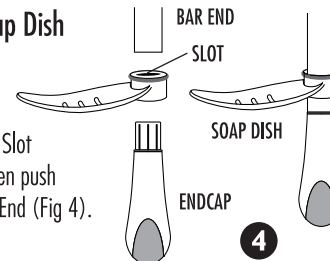
### Mount Slide Bar with Adhesive Brackets attached onto surface

1. Do not mount after showering, wait until air is free of steam/moisture. Clean and dry surface. Do not use cleaners that leave greasy film.
2. Make sure that your mounting surface has correct markings for positioning Slide Bar vertically straight, exactly where you want it.
3. Using finger nails or sharp point, lift and remove protective Red Film of Silicone Adhesive on back of both Brackets (Fig. 3).
4. Line up both Endcaps against surface markings and press them firmly against surface (Fig. 3). For easier vertical alignment, one Endcap can be pressed before the other.
5. Allow at least 6 hours for adhesive to set hold before adding the weight of hand shower, showering or creating wet/moist conditions.



### To Attach Soap Dish (OPTIONAL)

Insert bottom Bar End through Slot of Soap Dish, then push Endcap into Bar End (Fig. 4).



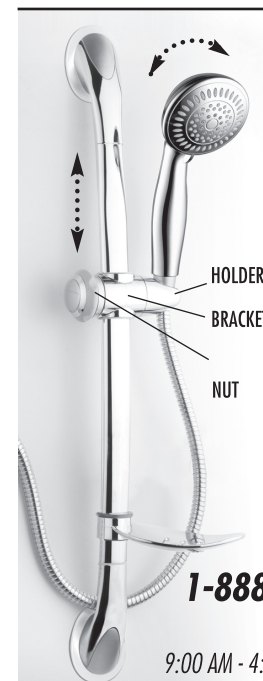
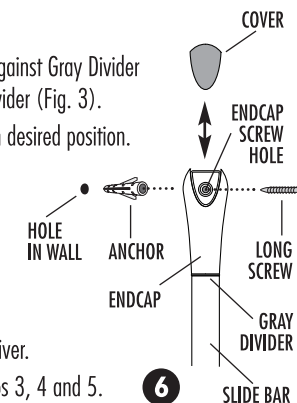
### To Remove Encap Cover (if needed)

1. Press down lower part of Endcap to create Gap between Endcap and Bracket or wall (Fig. 5).
2. Insert flat-point tool (like knife or screwdriver) into Gap and pull forward to snap off Cover.



### To Mount Slide Bar with Screws (optional)

1. Insert both Endcaps fully into Slide Bar Ends with each End pressing firmly against Gray Divider on each Endcap. Make sure that there are no gaps on either side of Gray Divider (Fig. 3).
2. Remove Endcap Covers (Fig. 6) and place Slide Bar vertically against wall in desired position.
3. Using pencil, mark upper hole location on the wall by inserting pencil point through Endcap Screw Hole (Fig. 6).
4. Using electric drill and 3/16" drill bit, drill hole at marked wall location.
5. Insert Anchor (provided) into drilled hole (Fig. 6).
6. Mount upper Endcap of Slide Bar by inserting Long Screw (provided) through Endcap Screw Hole and screwing it into Anchor with Phillips screwdriver.
7. To mount lower Endcap, align it vertically with upper Endcap and repeat steps 3, 4 and 5. Attach Covers onto Endcaps by pressing Inner Lock over Screw Hole projection (Fig. 2).

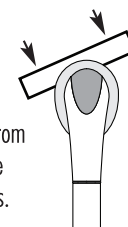


### Insert Hand Shower into Holder and adjust its height & angle

Loosen Bracket Nut and slide Bracket UP, DOWN or ACROSS to desired position. Rotate Bracket's Holder in vertical directions to set desired Hand Shower angle.

### To Remove Slide Bar with Adhesive Brackets from Surface (if needed)

Insert any flexible, thin, long edge (like metal ruler) between Bracket and wall, then push it in gradually (alternating force from left to right side) to cut through the soft silicone layer. Remove remaining silicone by pulling it off the surface with your fingers.



**If you have an installation problem or missing parts, please DO NOT return this product before calling us first.**

Call Toll Free  
**1-888-869-4010**

Monday - Friday  
9:00 AM - 4:00 PM Eastern Time

### LIFETIME LIMITED WARRANTY

Interlink will repair or replace any of this product's parts that exhibit defects in workmanship or materials for above stated period from date of purchase. If malfunction occurs, send only defective part(s) with proof of purchase to Customer Service Department at the address listed below. Your warranty does not cover malfunction or damage due to accident, misuse, or failure to follow any written instructions accompanying this product.