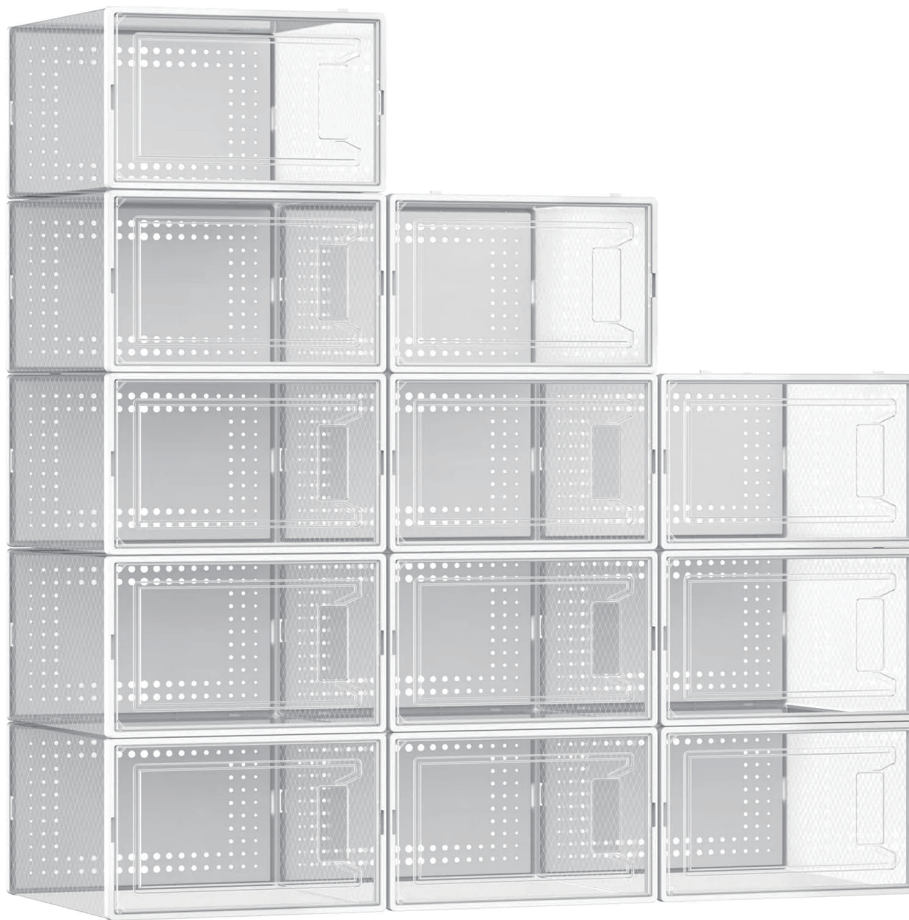
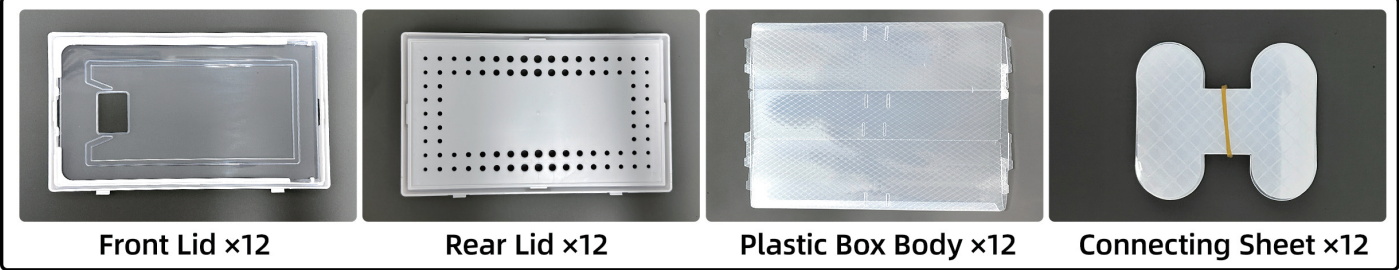


Clear Shoe Storage Box Instruction Manual

Note: There is also a more detailed video on the product detail page on website.

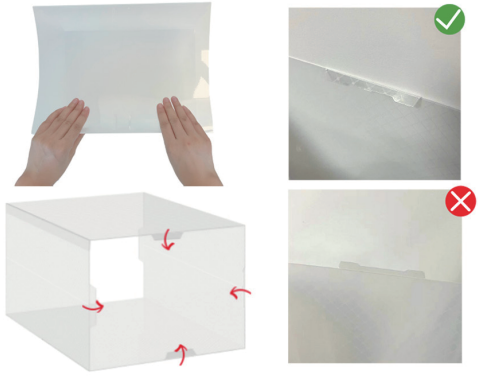


Packing List

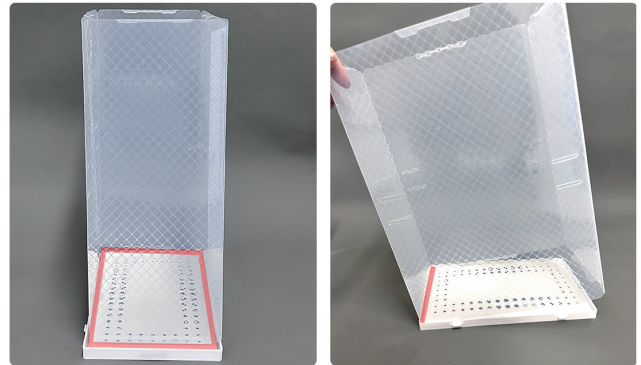


Installation Steps

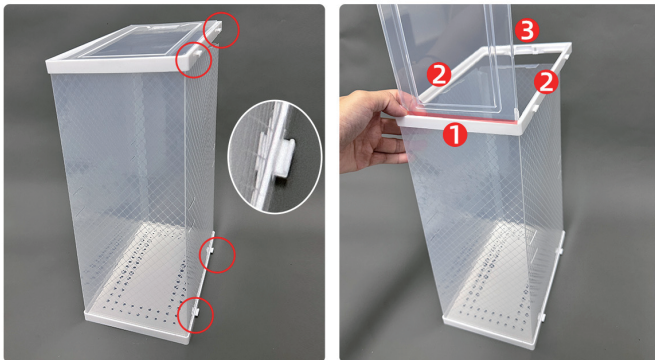
Step 1: Fold against the creases to make the box into a straight rectangle and fold the **4 TABS** inward.



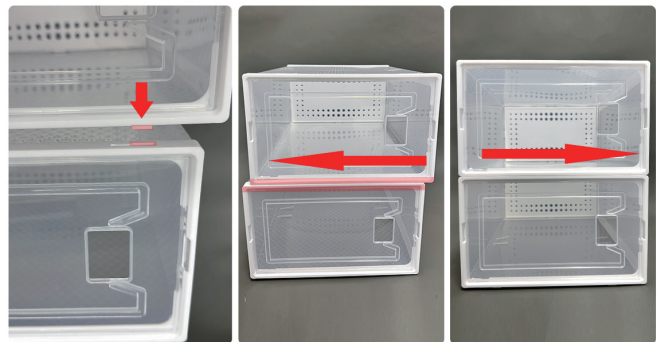
Step 2: Install rear lid and slide the shoe box body into the groove until you hear a "click."



Step 3: Align the stacking clips with the rear lid, then attach the front lid until you hear a "click."



Step 4: Face the front lid, align the 4 stacking clips at the bottom, and push left (right to disassemble).



Connecting Sheet



Tip 1: This is assembled. Tip 2: Recommended order

