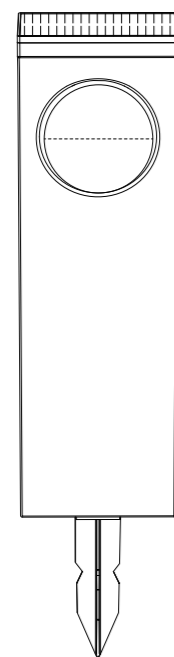


# SOLAR PATHWAY LIGHTS

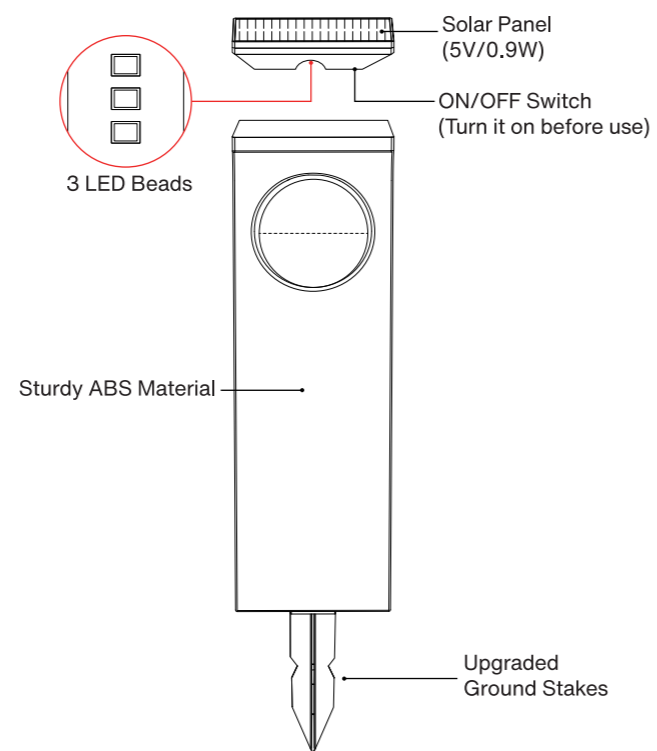
MODEL:TPL029



Thank you for your support of our product. If you have any problems, please feel free to contact us.

## USER MANUAL

### STRUCTURE



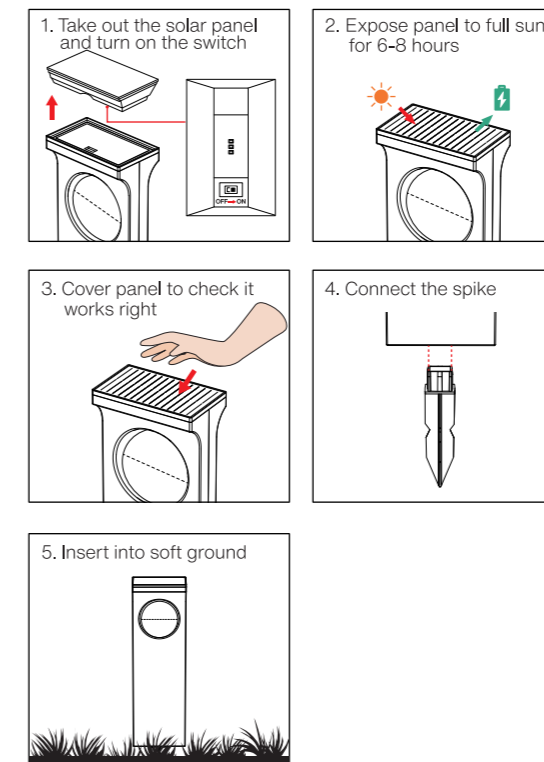
### SPECIFICATION

Power Source	Solar Power
Solar Panel	5V/0.9W Monocrystalline Silicon
Light Source	3PCS 2835 Lamp Beads
Light Color Temperature	3500k
Light Color	Warm White
Charging Time	6-8 Hours
Working Time	10-12 Hours
Waterproof Level	IP65
Material	ABS+PC

### FIRST TIME USE

1. Please make sure you have turned "ON" the switch before using, and charge for at least 8 hours in direct sunlight
2. In cloudy weather or winter, charging time may be longer and working time may be shorter, which is normal for solar outdoor lantern lights and should not be considered as a quality problem.

### EASY TO USE



### PRODUCT FEATURES

- The solar pathway lights will light up at night and turn off at sunrise automatically.
- Solar panel is automatically charged for 6-8 hours a day during the day and converted into electricity at night.
- The lighting time is up to 10 hours.
- Place of use: garden, lawn, walkway, courtyard, yard, park, pathway, etc.

### PLEASE NOTE

- Please turn on the switch for daytime charging.
- Although this product is waterproof, please do not immerse it in water or place it in a wet place.
- If not used for more than one week after receiving, please put it under the sunlight for charging before using.