

Special attention

I can't find Assembly tools ! Legs ? Backrest ?

Flip up the sofa base, pull open the bottom cloth of the base, and you'll see them.



INSTALLATION OF THE SOFA MAIN BODY



1 Locate base and pre-installed armrests, position as shown, then insert armrests into base per diagram



2 Locate accessories C, G, H; unfold base bottom fabric, then install 6 nuts total on left/right armrests as shown



3 Once the armrests are installed, cover the base's bottom fabric as shown in the diagram



4 Locate the backrest accessory and install it as shown in the diagram

INSTALLATION OF THE SOFA MAIN BODY



5 Once the backrest is installed, ensure it matches the diagram



6 Locate the pre-covered back cushions and seat cushions, then position them as shown in the diagram



7 As shown in the diagram, the sofa assembly is complete



PRODUCT INSTRUCTIONS

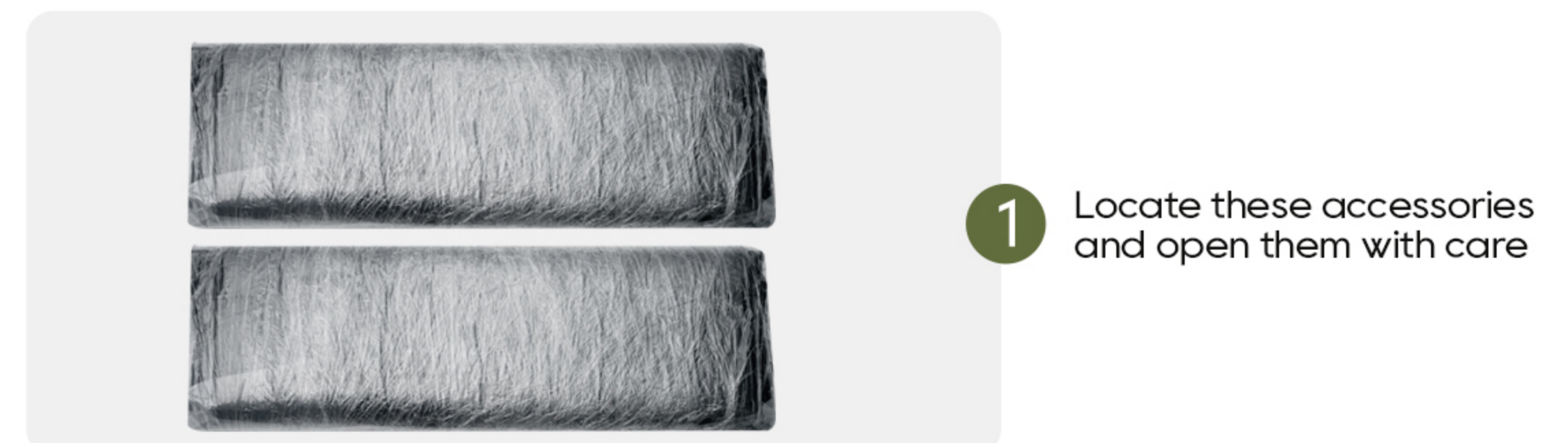
PRODUCT ACCESSORIES



BACK PILLOW ASSEMBLY



SEAT CUSHION INSTALLATION

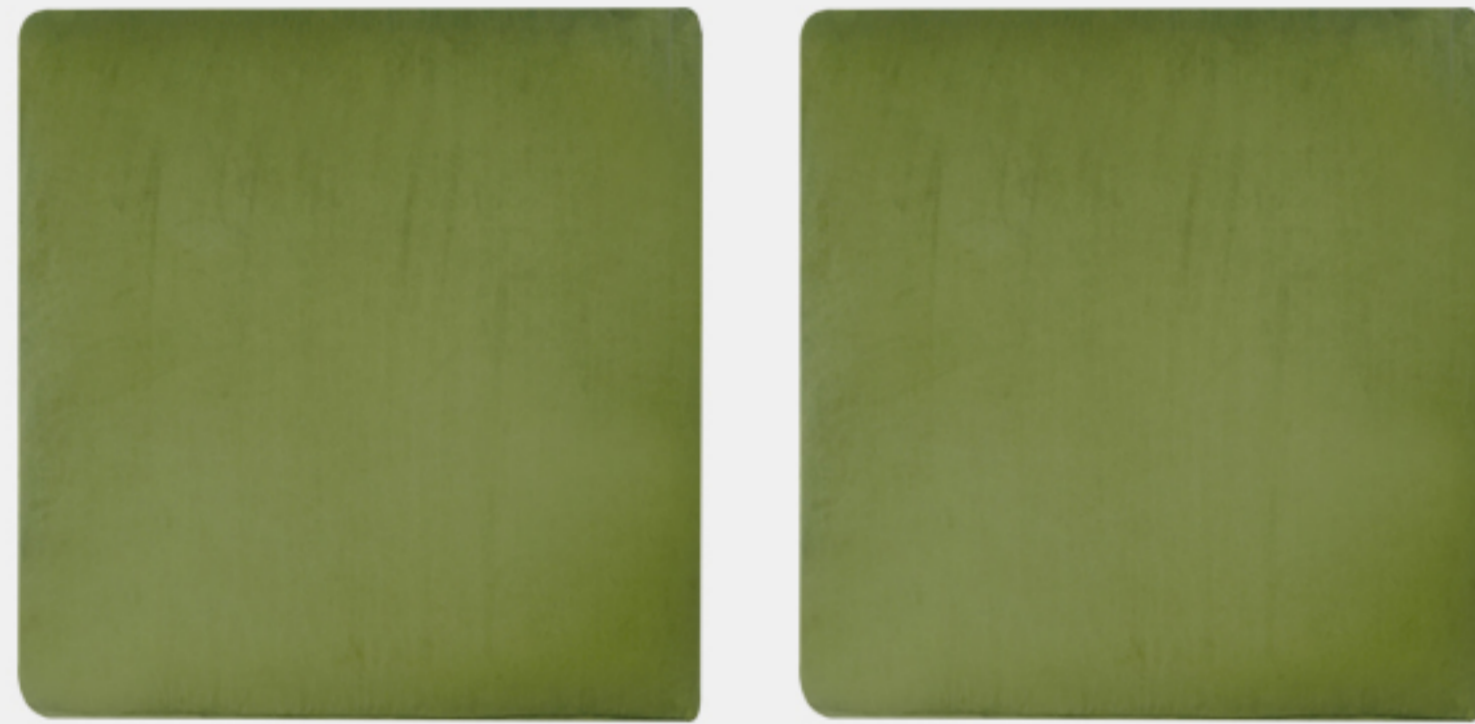




2 Gently tap with the palm of your hand to allow it to rebound to the state shown in the image

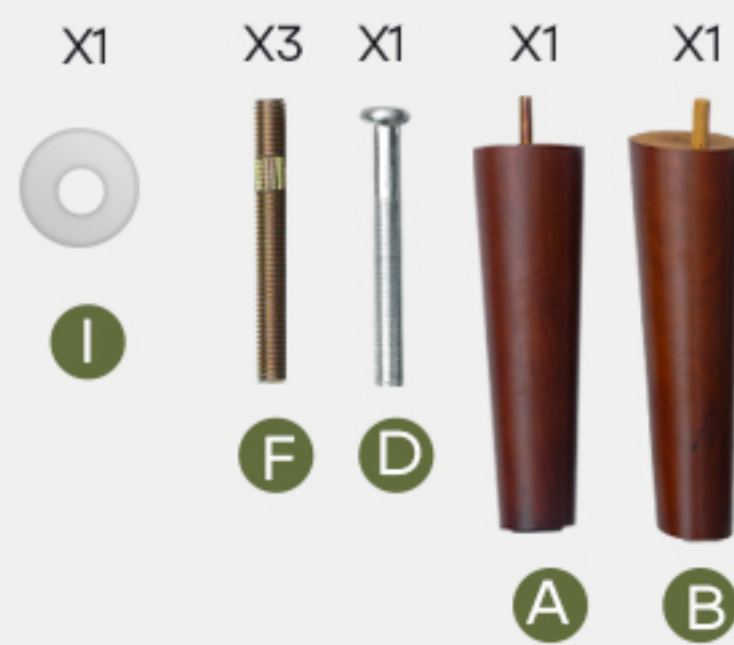


3 Position the seat cushion and cover strictly as shown in the diagram, then carefully slip the cover over the cushion



4 Find the seat cushion cover, put the cushion insert into it, and the seat cushion installation is complete.

SEAT CUSHION INSTALLATION



1 Locate these accessories and follow the steps below for installation



STEP 1-1



STEP 1-2



STEP 1-3



STEP 1-4



STEP 1-5



STEP 1-6

* For the other armrest, follow the same installation steps as above