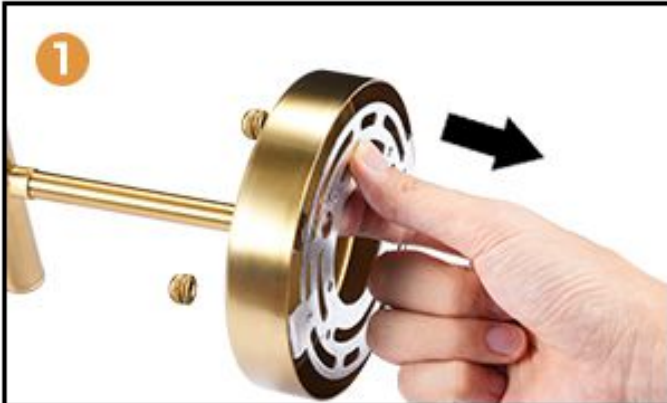


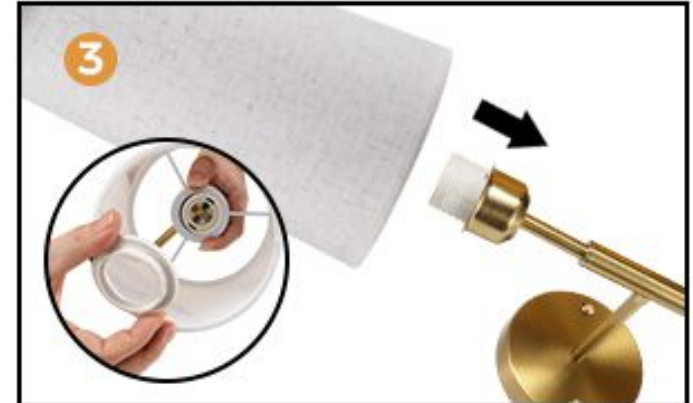
Installation Steps



1 Remove the mounting plate from lamp stand, then assemble lamp pole and lamp stand.



2 Unscrew the cap screw of the lamp head



3 Put the lampshade on the lamp head, fasten the lampshade then tighten the screw.



4 Install the fully charged LED bulbs



5 Drill two holes on the wall, and put expansion bolts into the holes, then fix the mounting plate on the wall.



6 Fix the main body of the lamp on the wall hanging plate and make sure the installation is firm.