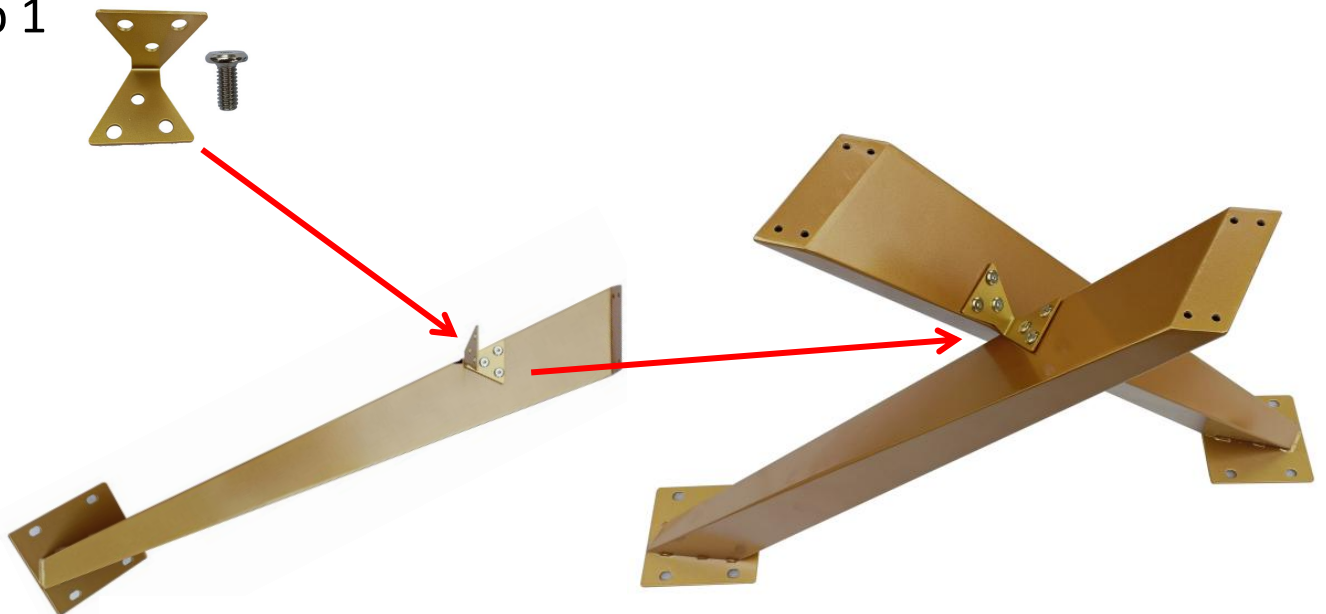


Installation

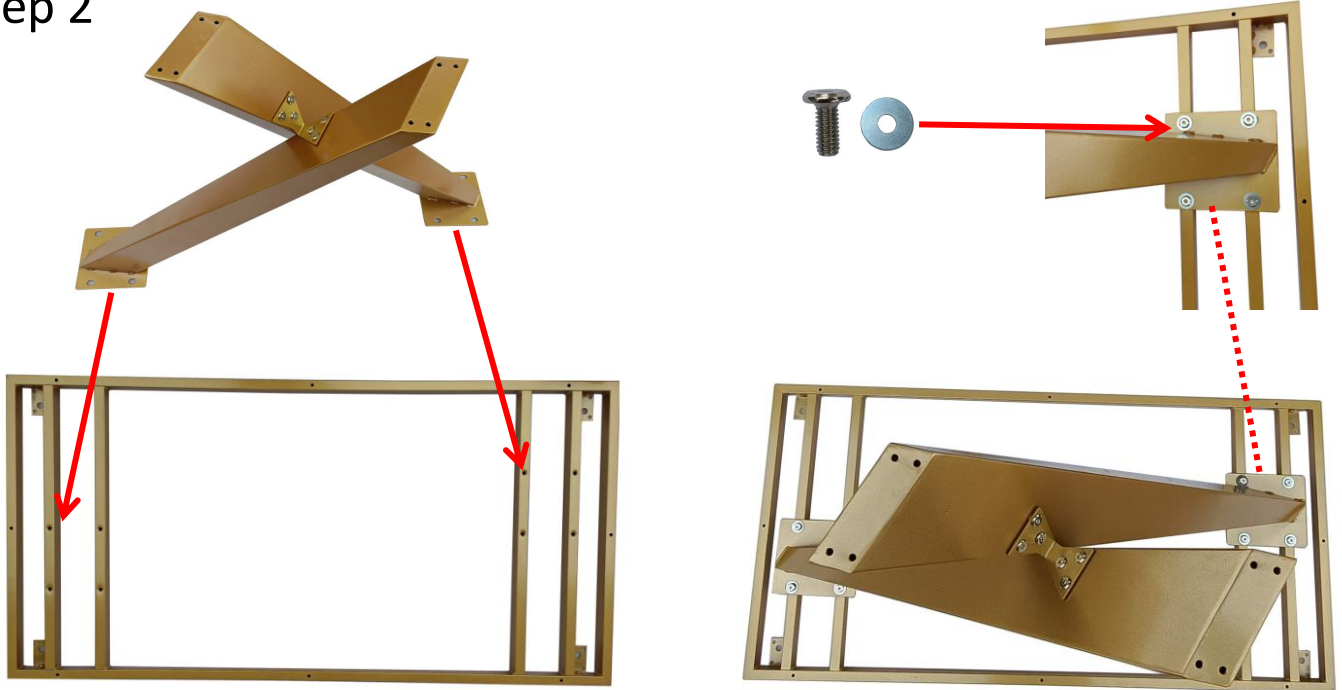
Hardware List		Hardware List	
 Table top	1	 Table base	1
 Table leg	2	 Support frame	1
 Connecting piece	1	 8x16mm screw	26
 Washer	20	 Foot pad	6
 spare 4x15mm Self-tapping screws	8	 Hexagonal screw tap	1

Step 1



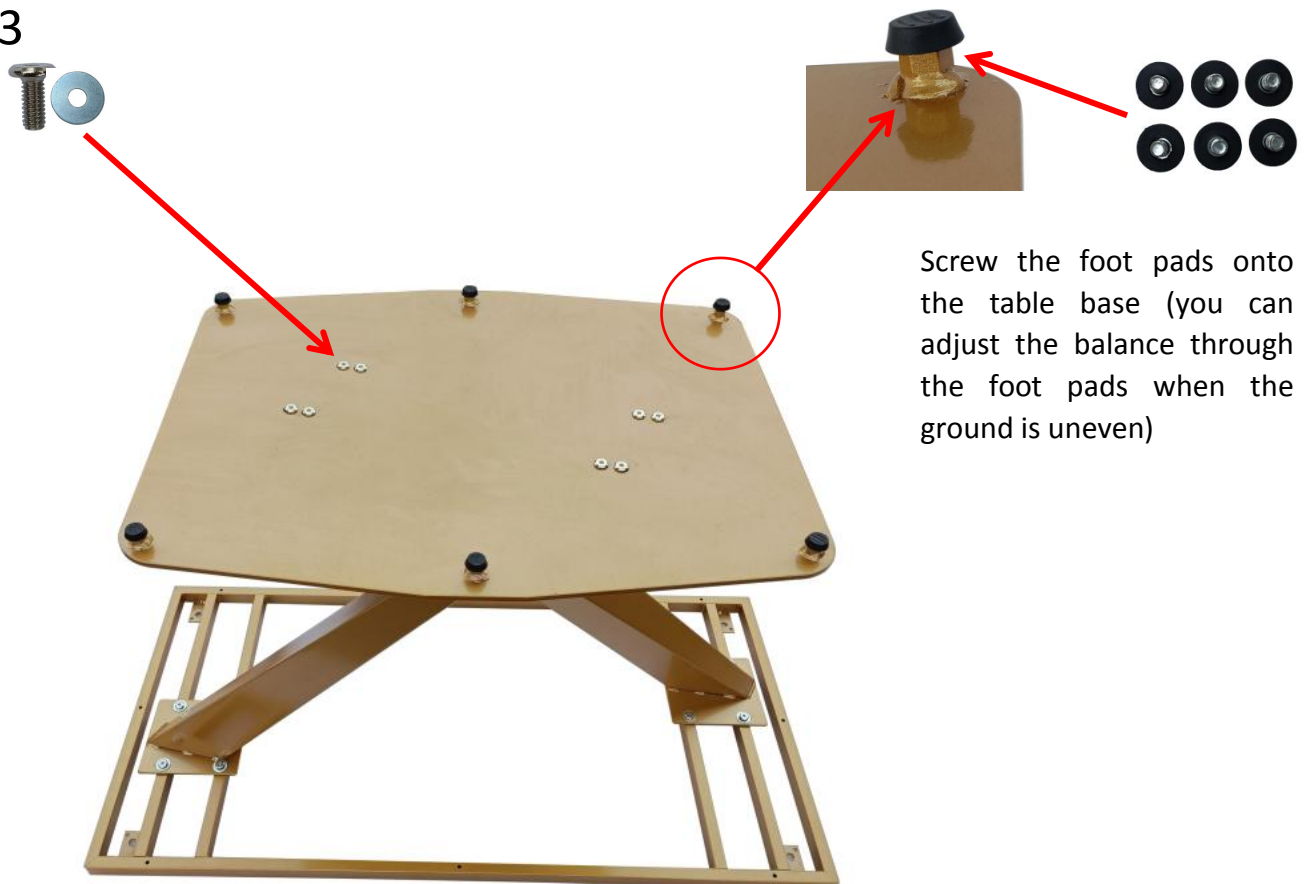
Use 8x16mm screws and connecting piece to connect the two table legs. Be careful not to fully tighten the screws first, wait until step 3 is completed.

Step 2



Use 8x16mm screws to fix it first, be careful not to fully tighten the screws, wait until step 3 is completed.

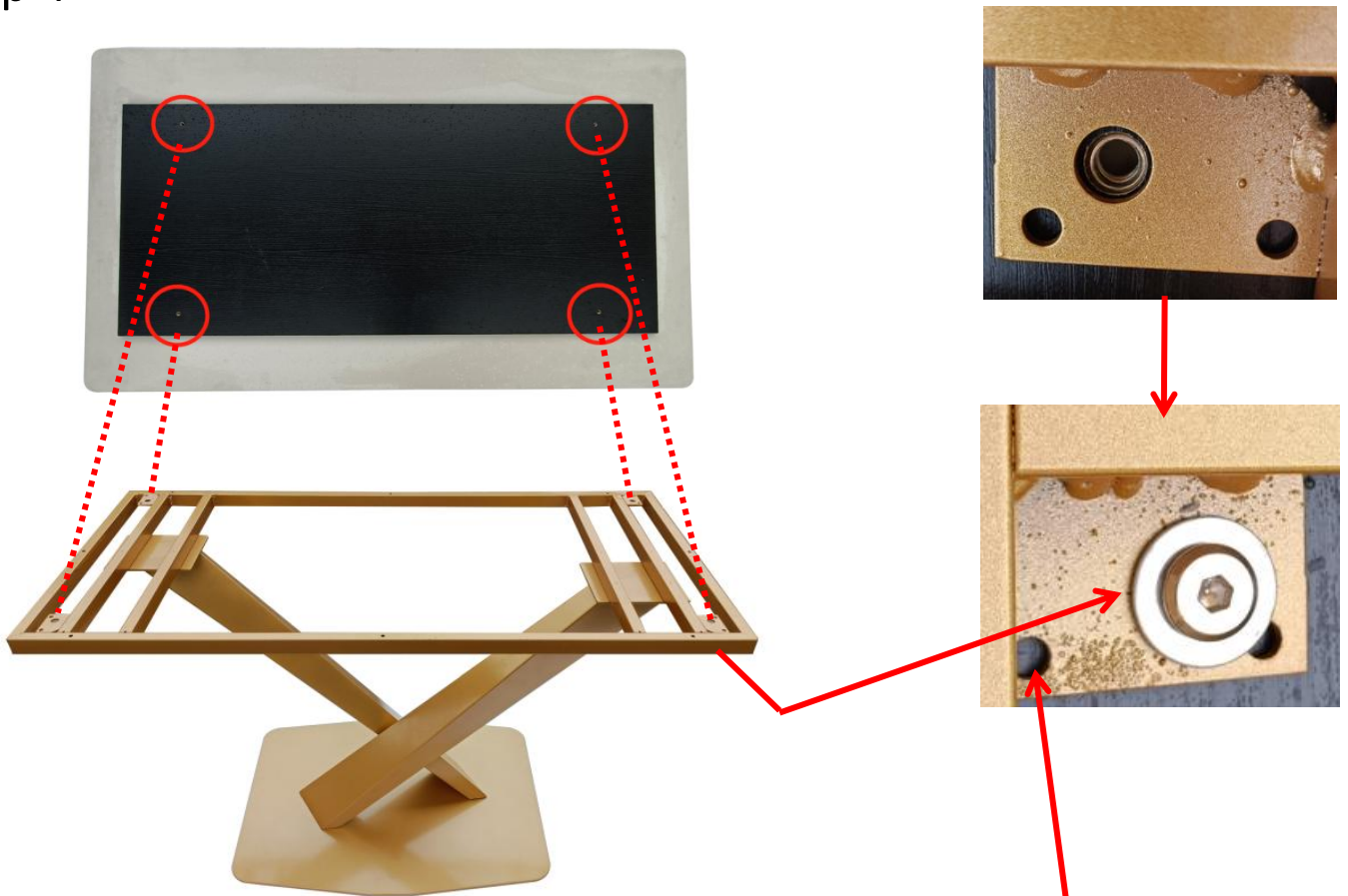
Step 3



Screw the foot pads onto the table base (you can adjust the balance through the foot pads when the ground is uneven)

Fix the table base with 8x16mm screws. Then tighten all the screws from the previous steps.

Step 4

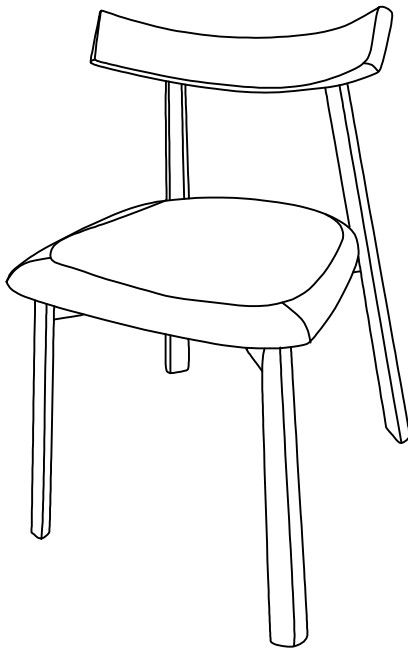


Put the table top on the table leg, make sure the reserved screw holes of the table top and the frame are corresponding, tighten 8x16mm screws to finish the installation.

This is a spare screw hole. When the 8x16mm screw fails to be screwed in, the hole can be fixed with a 4x15mm self-tapping screw. Either way will do.



MH-DC7



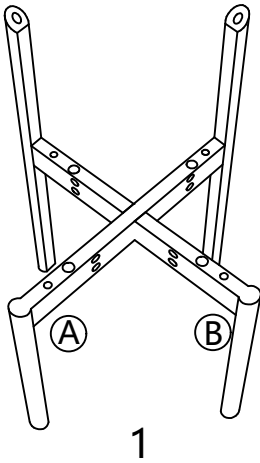
Notice:

1. Follow the installation instructions. Please confirm all accessories are preset before installation.
2. Do not fully tighten the screws during initial assembly. Fully tighten screws only once all pieces which are correctly assembled.
3. If you encounter any problems during installation, please contact our customer service.

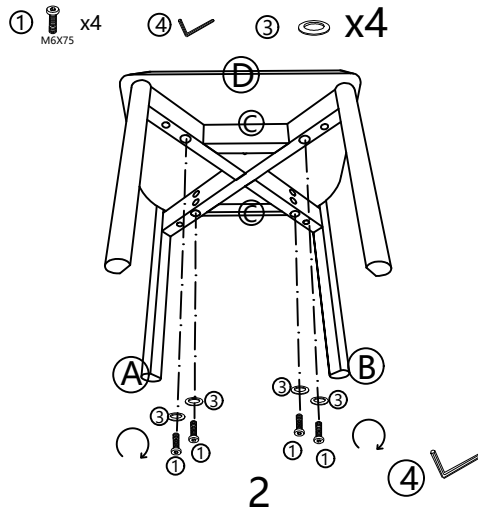
	Reference Image	Qty
(A)		x1
(B)		x1
(C)		x1
(D)		x1
(E)		x1

	Reference Image	Qty
(1)		x4
(2)		x10
(3)		x4
(4)		x1

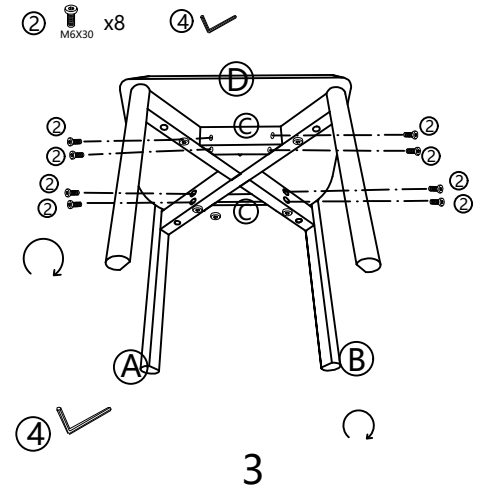
Please do not tighten the screws initially when installing them



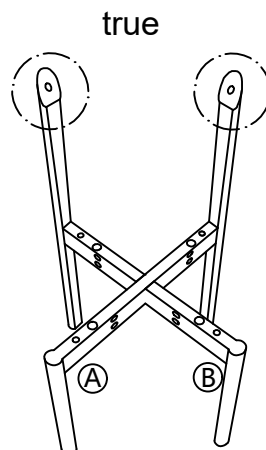
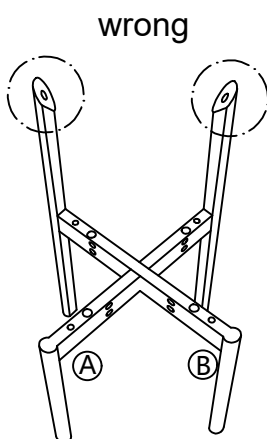
Please do not tighten the screws initially when installing them



Please do not tighten the screws initially when installing them



Notice:



4

After all screws are installed, tighten all screws

