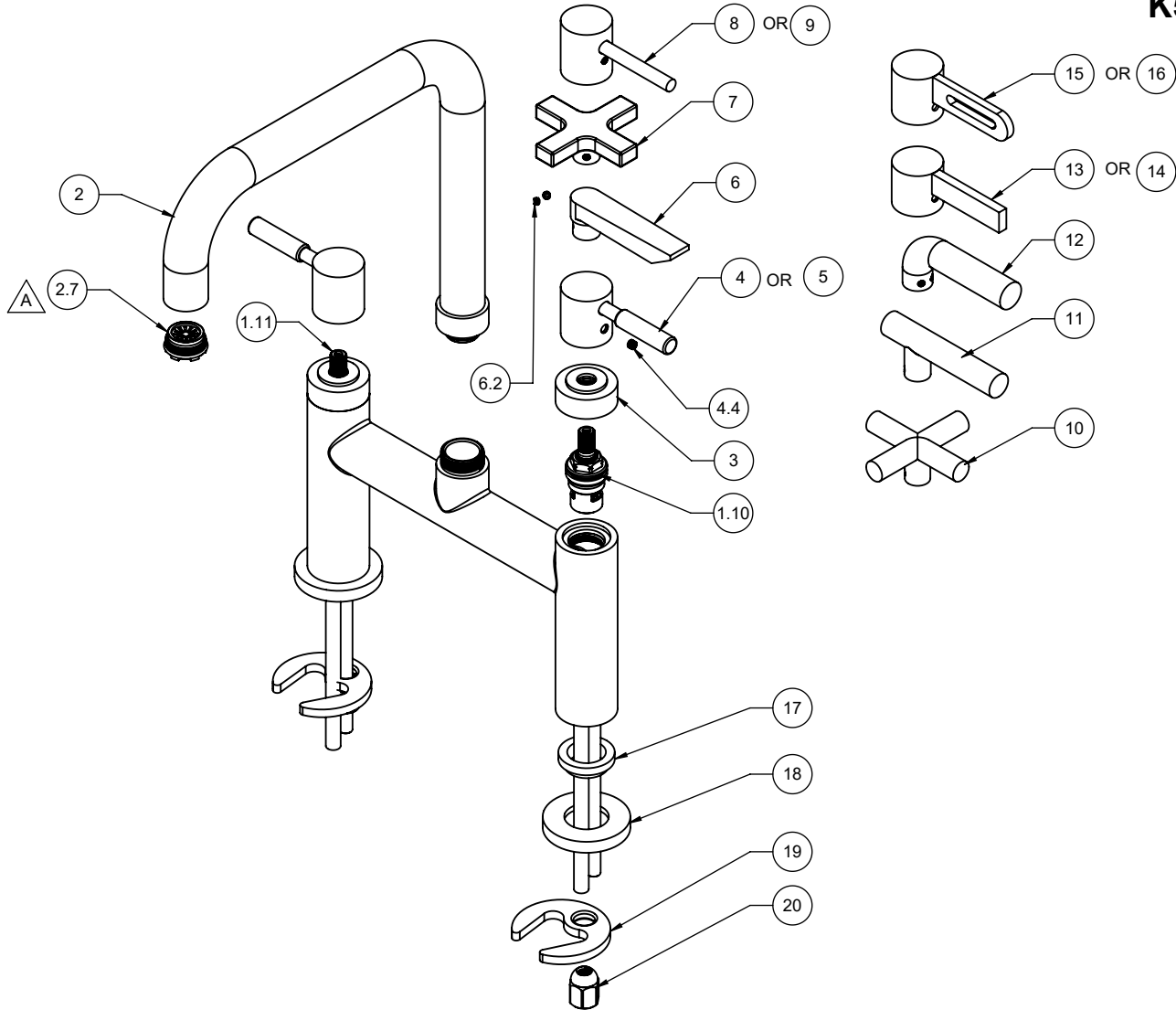


△ REQUIRES ITEM 23

- |               |             |
|---------------|-------------|
| K51-123-66    | K51-123-45  |
| K51-123-74    | K51-123-45X |
| K51-123-E3    | K51-123-52  |
| K51-123-E3B   | K51-123-52B |
| K51-123-E3RB  | K51-123-62  |
| K51-123-E3BRB | K51-123-62B |
|               | K51-123-65  |



**K51-123-66**      **K51-123-45**  
**K51-123-74**      **K51-123-45X**  
**K51-123-E3**      **K51-123-52**  
**K51-123-E3B**      **K51-123-52B**  
**K51-123-E3RB**      **K51-123-62**  
**K51-123-E3BRB**      **K51-123-62B**  
**K51-123-65**

To order spare parts add and/or replace as stated below:

**SPD-** prefix added to part number(s)  
**-ZZ** replaced with finish code (see finish table)  
**-WW** replaced with **-90** (light finish) or **-96** (dark finish)

Ex: **SPD-7-100463-PC** or **SPD-86030-96**

	ITEM	PART NO	DESCRIPTION	QTY.
for E3RB series	15	7-100624-ZZ	ASM, ROUND BLADE HDL SHORT BRCH <i>(incl. 4.4)</i>	1
for E3BRB series	16	7-100624B-ZZ	ASM, ROUND BLADE HDL SHORT BRCH <i>(incl. 4.4)</i>	1
	17	11143-98	SLEEVE, BRIDGE CONT LEG	2
	18	50676-ZZ	RING, CONT AIR SWITCH BASE	2
	19	880309-98	MOUNTING BRACKET, SINGLE HOLE CRESCENT	2
	20	10184-98	NUT, HEX W/ DOME	2
for ITEM 4.4	21	882043-99	KEY, ALLEN, 3/32", BLACK	1
for ITEM 6.2	22	882042-99	KEY, ALLEN, 5/64", BLACK	1
for ITEM 2.7	23	223473-99	KEY, STD CACHE AERATOR INSERT	1

	ITEM	PART NO	DESCRIPTION	QTY.
	1.10	880431-99	CART 1/2" 16-T W/FRICTION BRG M24X1 MALE THD - LTC "NL"	1
	1.11	880430-99	CART 1/2" 16-T W/FRICTION BRG M24X1 MALE THD - RTC "NL"	1
	2	7-100433-ZZ	ASM, SPOUT, CONT BRIDGE TWO BEND <i>(incl. 2.7)</i>	1
	2.7	880529-81	INSERT, 1.75 GPM, STD AERATED (PCA CACHE)	1
	3	10390-ZZ	CAP, CARTRIDGE	2
for 62 series	4	7-100428-ZZ	ASM, LEVER, BRIDGE TWO STEP STICK <i>(incl. 4.4)</i>	2
	4.4	86047-90	SETSCREW 10-24 X 3/16 SCKT HD CONE PT SS	1
for 62B series	5	7-100428B-ZZ	ASM, LEVER, BRIDGE TWO STEP STICK <i>(incl. 4.4)</i>	1
for 45 series	6	7-100135-ZZ	ASM, LEVER HANDLE - ART DECO <i>(incl. 6.2)</i>	1
	6.2	86030-WW	SETSCREW 8-32 X 1/8 SCKT HD CUP PT SS	2
for 45X series	7	7-100267-ZZ	ASM, SQ. CROSS HDL <i>(incl. 6.2)</i>	1
for 52 series	8	5-100175-ZZ	ASM, CONT POTFILLER LEVER ST - K50 <i>(incl. 4.4)</i>	1
for 52B series	9	5-100175B-ZZ	ASM, CONT POTFILLER LEVER ST - K50 <i>(incl. 4.4)</i>	1
for 65 series	10	7-653143-ZZ	KIT, CTEMP CROSS HDL, 65 SERIES <i>(incl. 6.2)</i>	1
for 66 series	11	7-663144-ZZ	KIT, CTEMP LEV HDL, 66 SERIES <i>(incl. 6.2)</i>	1
for 74 series	12	7-100146-ZZ	ASM, LEVER, 74 SERIES "BROACHED" <i>(incl. 6.2)</i>	1
for E3 series	13	7-100319-ZZ	ASM, HANDLE, RD HUB SHORT & BLADE LEVER <i>(incl. 4.4)</i>	1
for E3B series	14	7-100319B-ZZ	ASM, HANDLE, RD HUB SHORT & BLADE LEVER <i>(incl. 4.4)</i>	1