

Coffee Table

Assembly Instructions

Montageanleitung

Instrucciones de ensamblaje

Instructions de montage

Istruzioni di montaggio



English

WARNING!

Wipe clean with a damp cloth.
Wipe dry with a clean cloth.
Check regularly that all assembly fastenings are properly tightened and retighten when necessary.

Français

ATTENTION!

Nettoyer à l'aide d'un chiffon humide.
Terminer en essuyant avec un chiffon sec.
Vérifiez régulièrement que toutes les fixations soient bien serrées et resserrez si nécessaire.

Deutsch

ACHTUNG!

Mit einem feuchten Tuch abwischen.
Mit trockenem Tuch nachwischen.
Regelmäßig kontrollieren, dass alle Beschläge und Verschraubungen gut festgezogen sind und sie bei Bedarf nachziehen.

Italiano

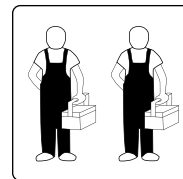
AVVERTENZA!

Pulisci con un panno umido.
Asciuga con un panno pulito.
Controlla regolarmente che tutti gli elementi di fissaggio siano stretti bene e, se necessario, serrali nuovamente.

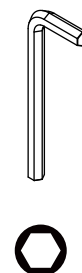
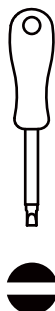
Español

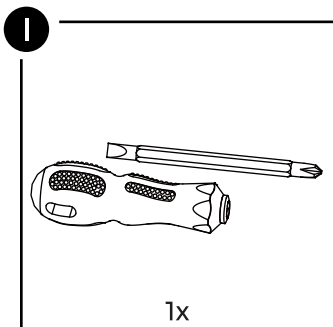
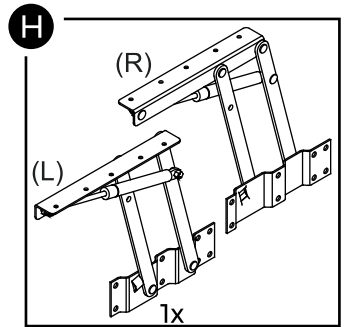
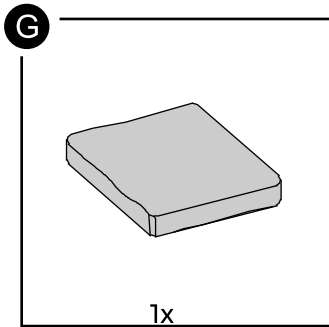
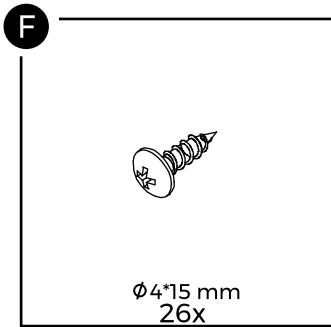
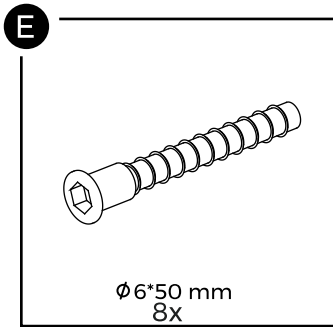
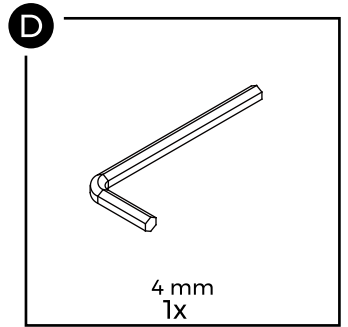
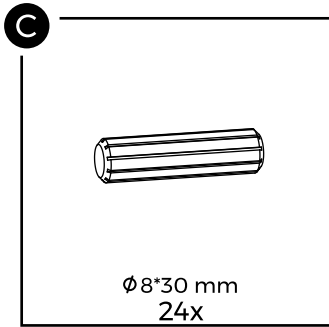
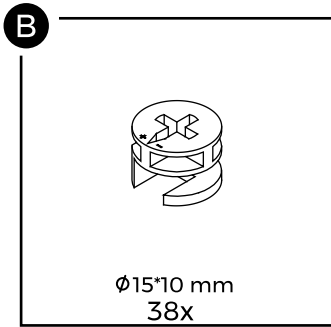
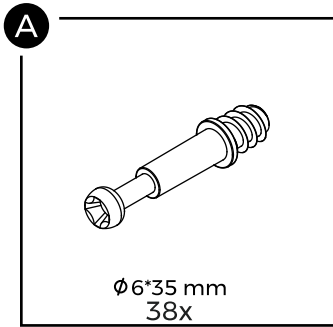
ADVERTENCIA!

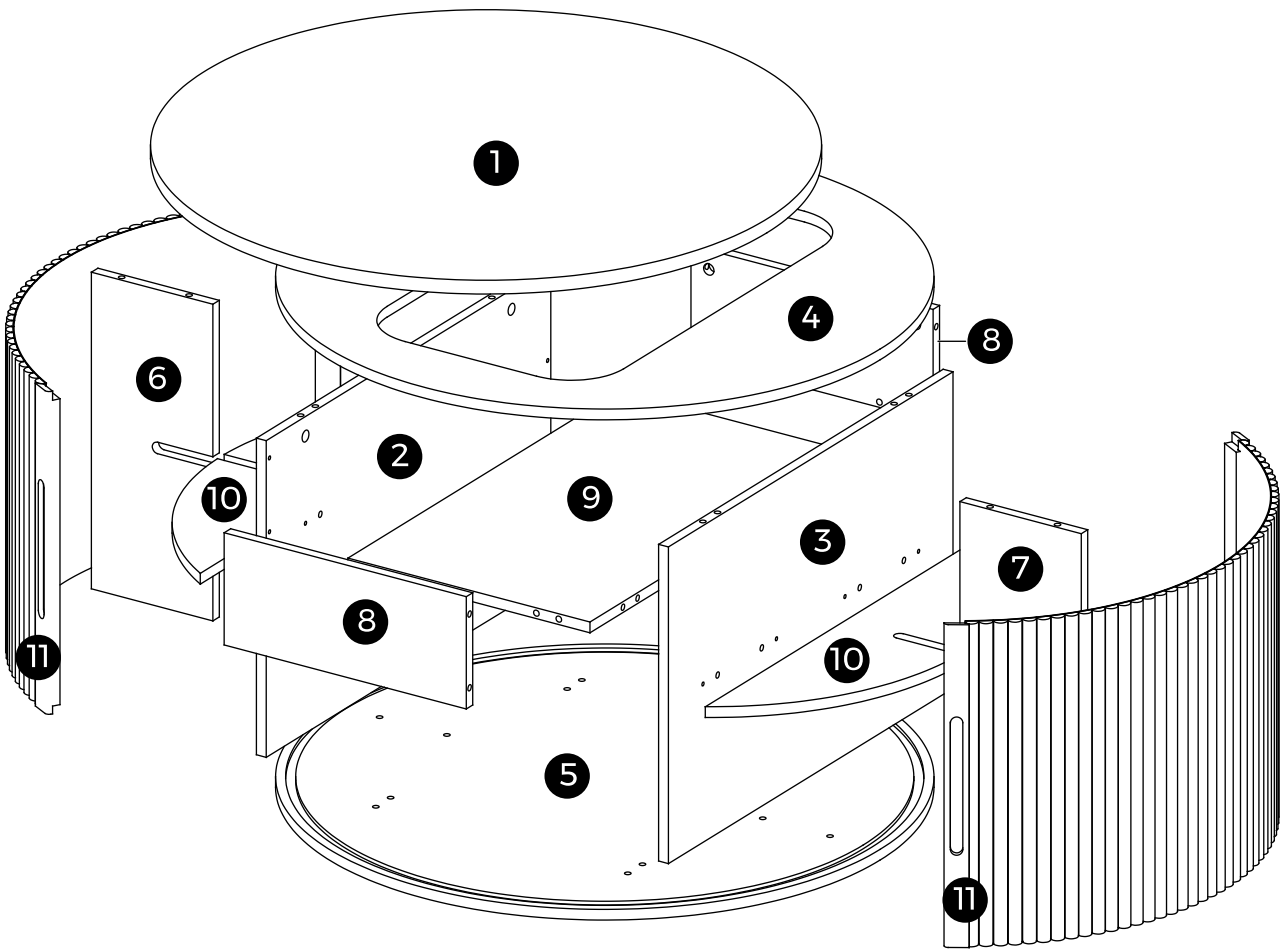
Limpiar con un paño húmedo.
Secar con un paño seco.
Comprueba regularmente que las fijaciones estén bien apretadas y vuelve a apretarlas en caso necesario.



Tools Required :

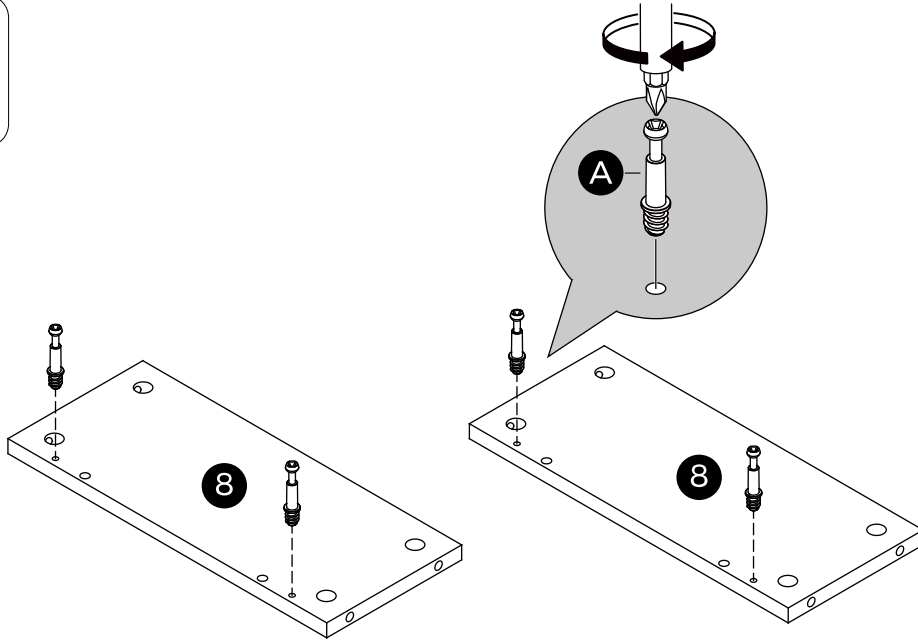
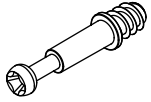






1

A x 4pcs

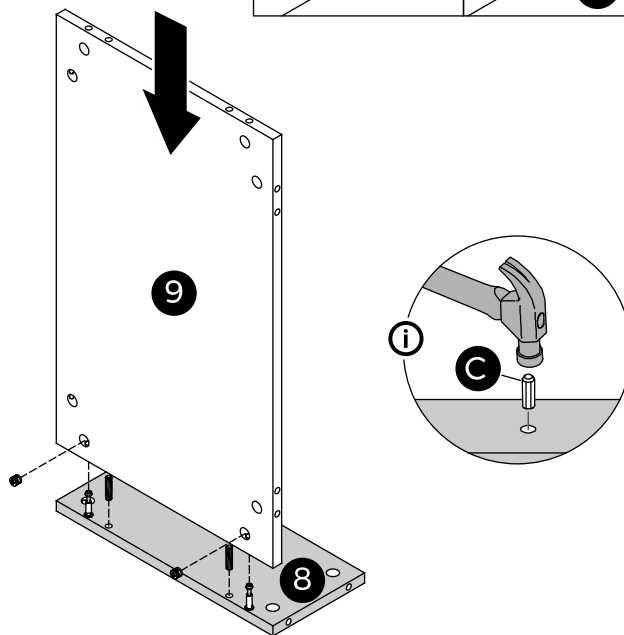
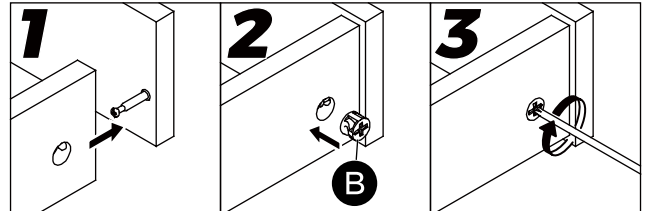


2

B x 2pcs



C x 2pcs

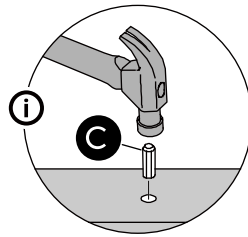
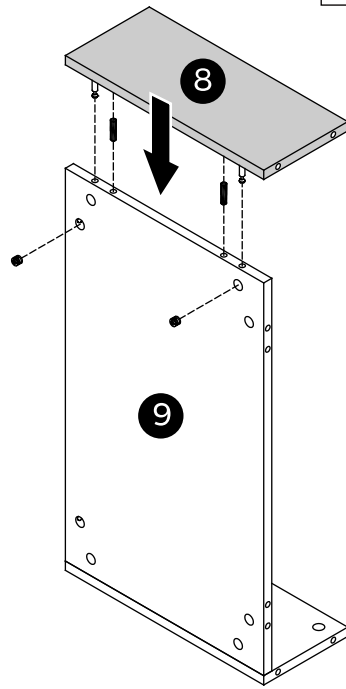
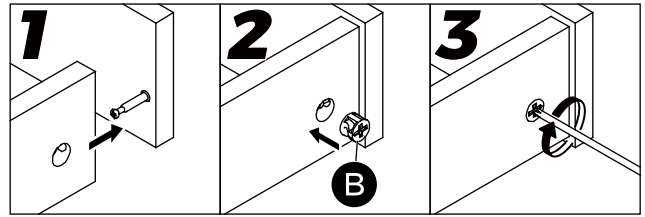


3

B x 2pcs

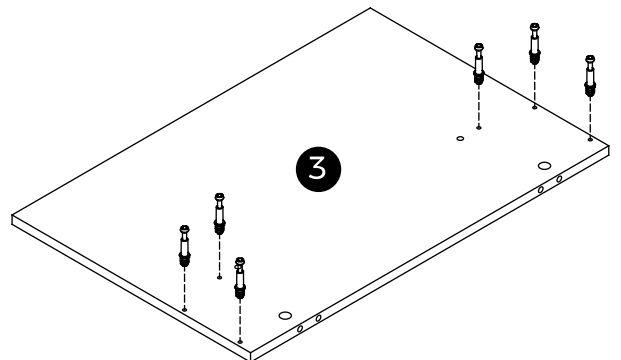
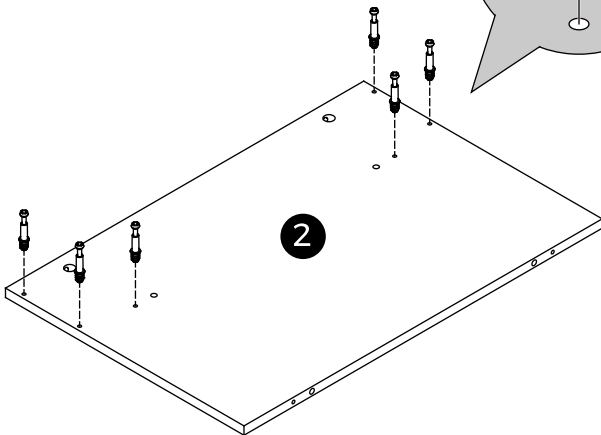
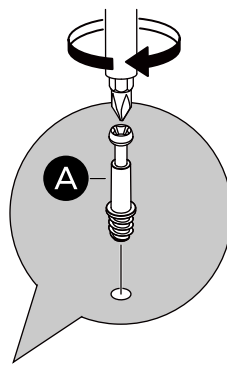
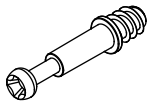


C x 2pcs



4

A x 12pcs

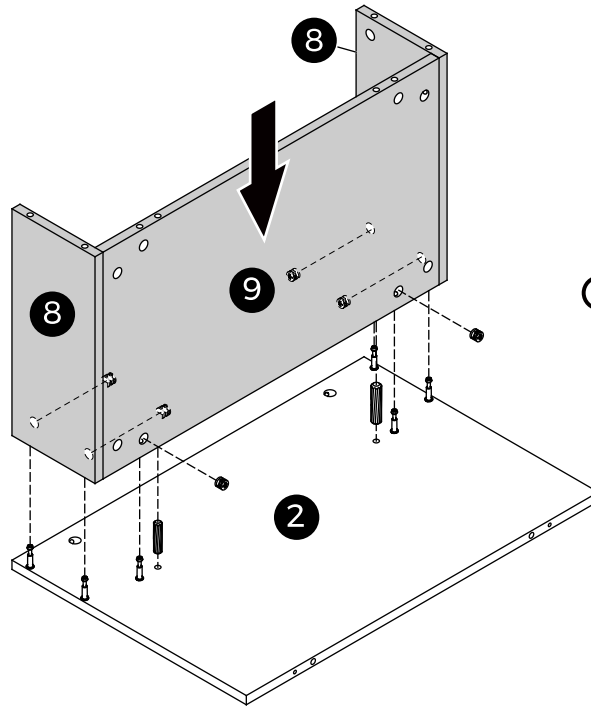


5

B x 6pcs



C x 2pcs

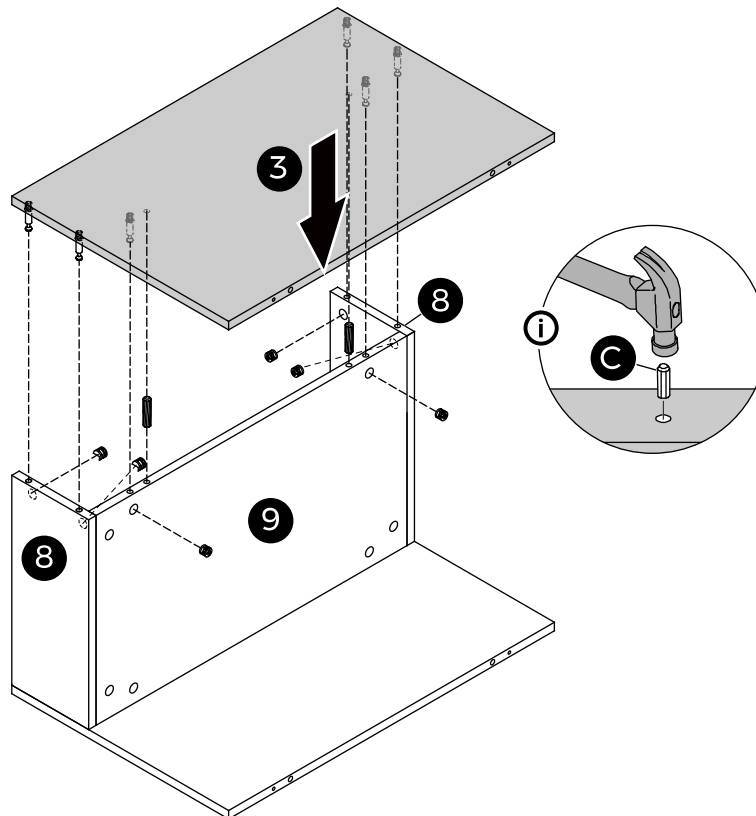
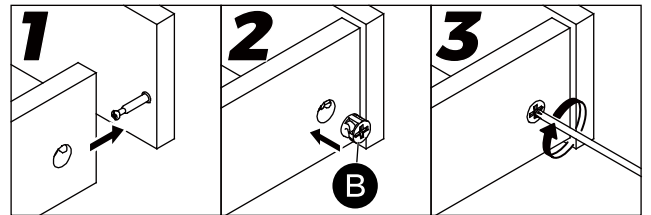


6

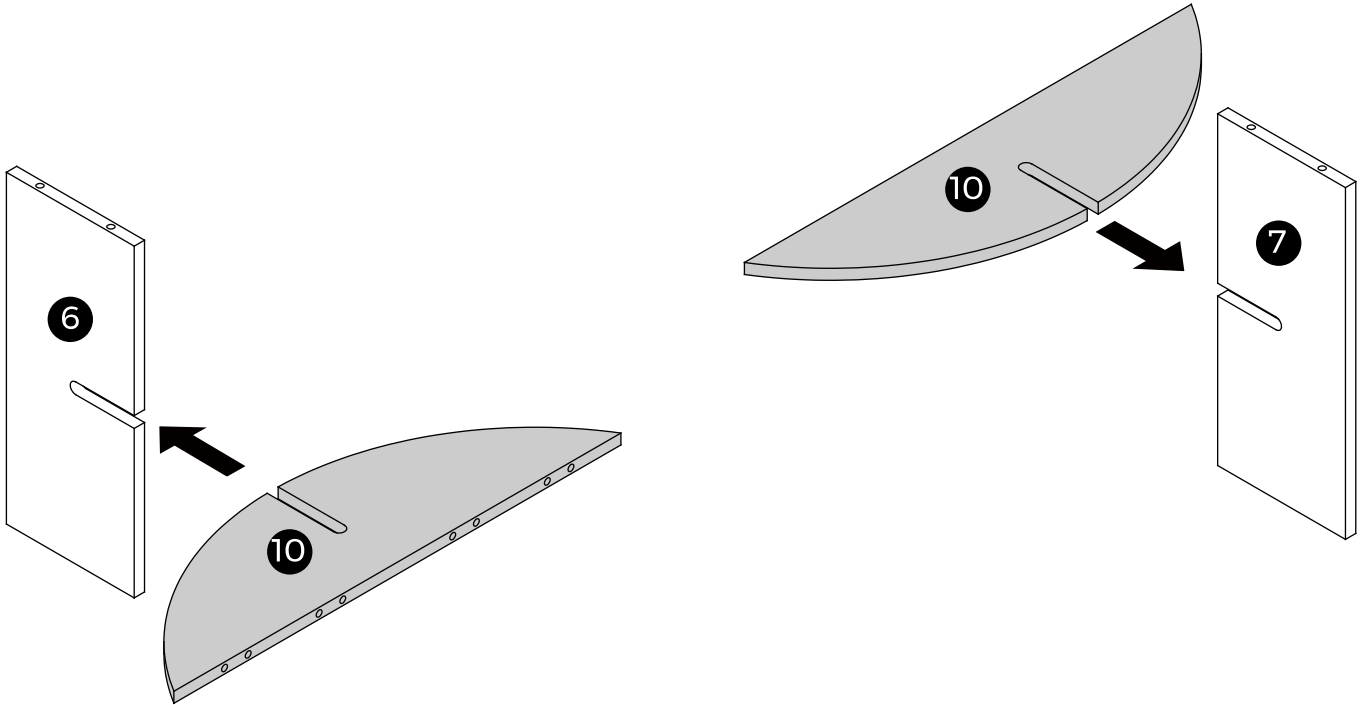
B x 6pcs



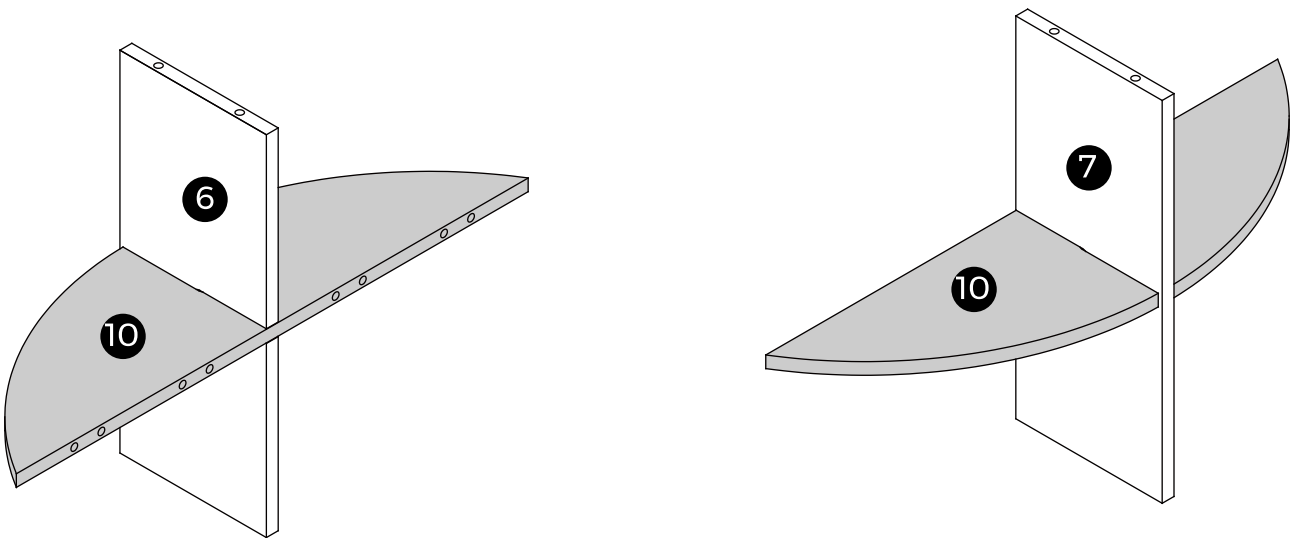
C x 2pcs



7

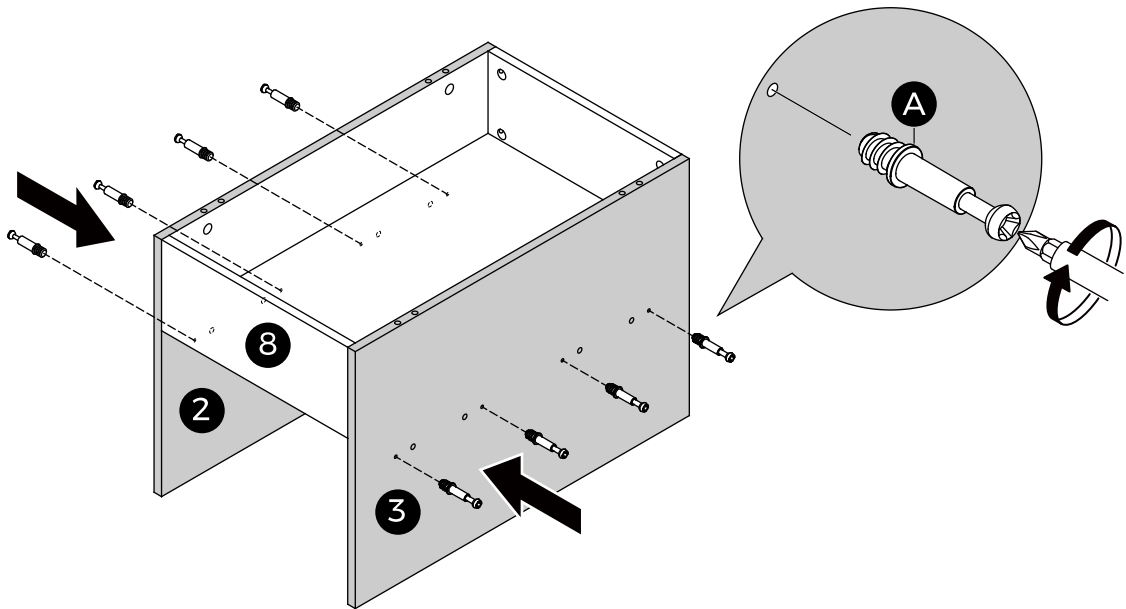
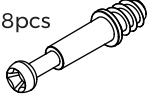


8



9

A x 8pcs

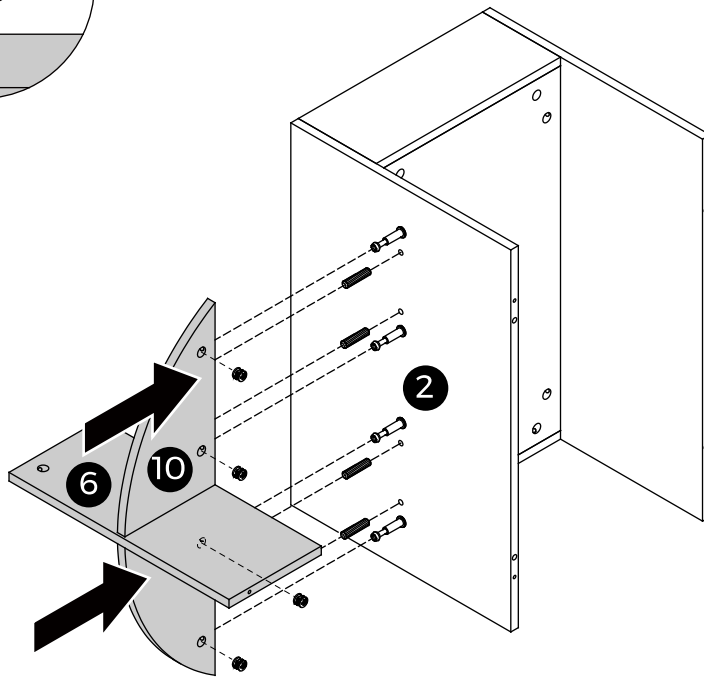
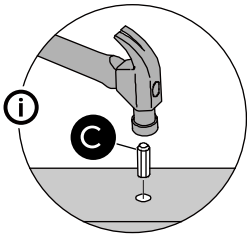
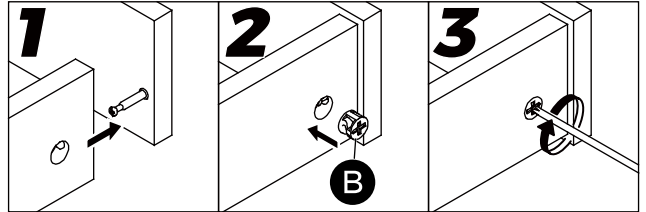


10

B x 4pcs



C x 4pcs

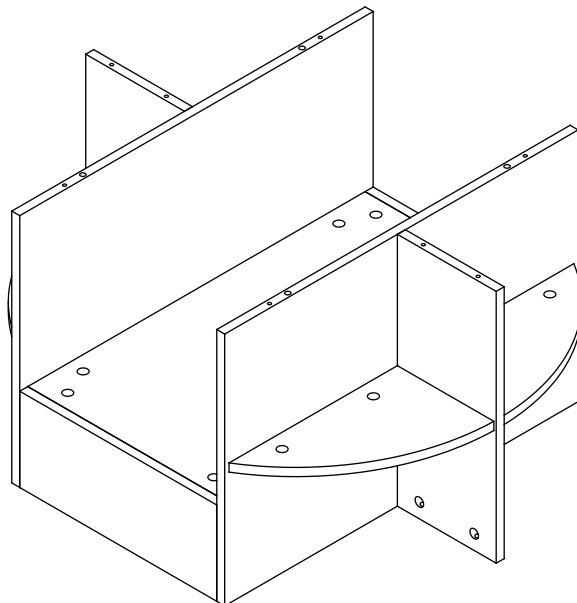
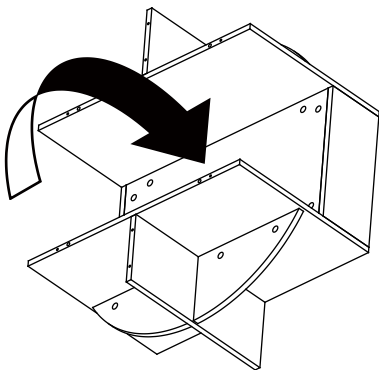
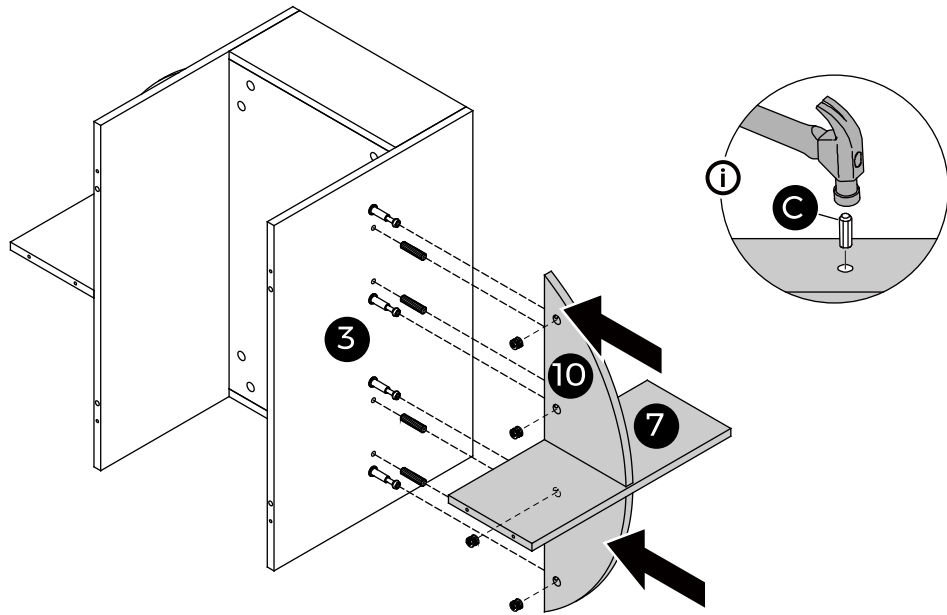
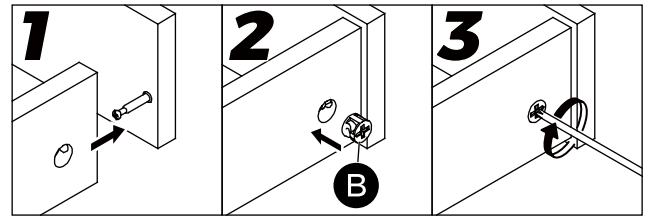


11

B x 4pcs



C x 4pcs



12

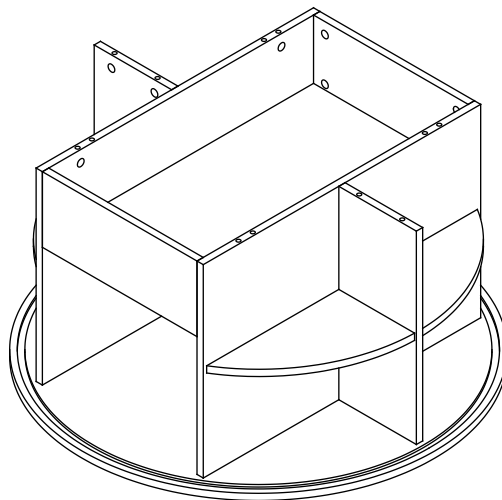
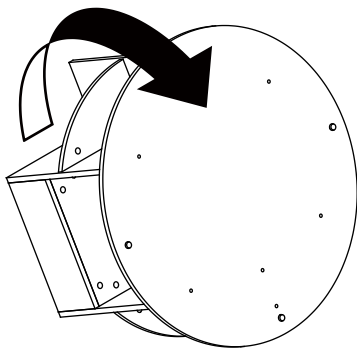
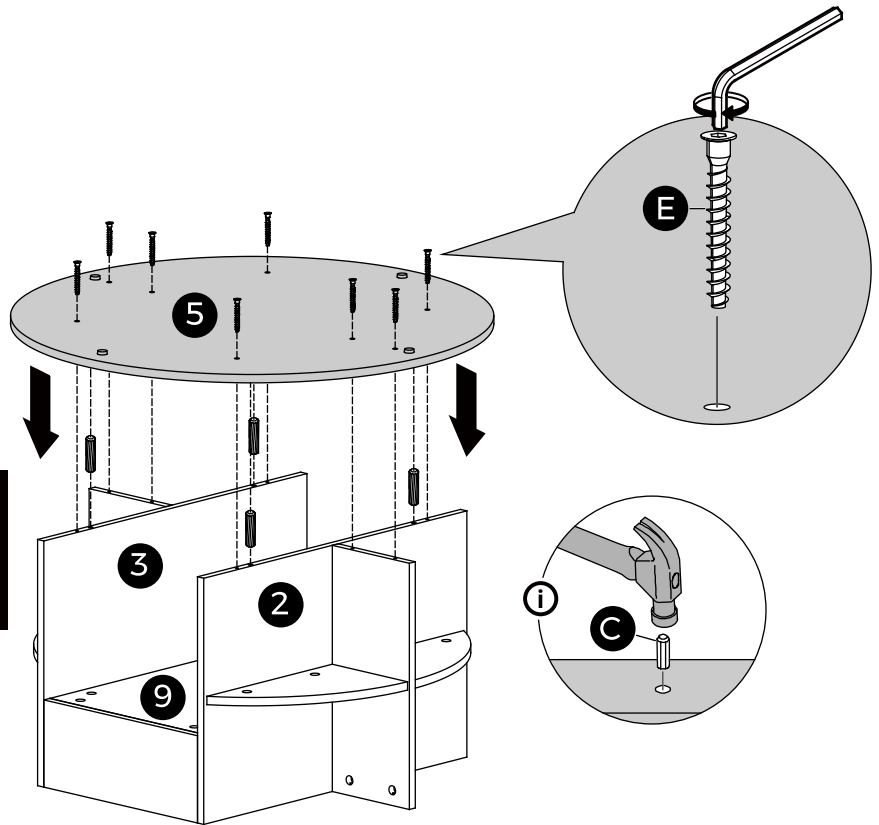
C x 4pcs



E x 8pcs

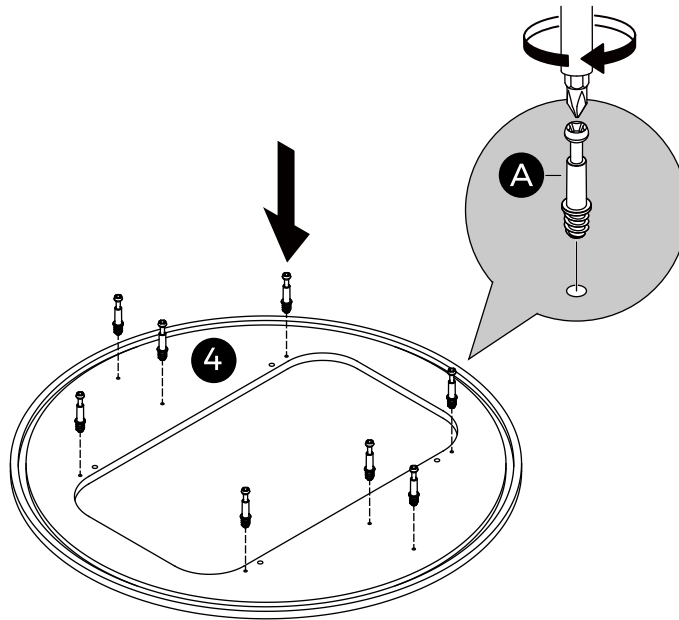
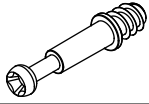


The grain direction of board (5) must correspond to that of boards (9), (10), and (11) during installation.



13

A x 8pcs

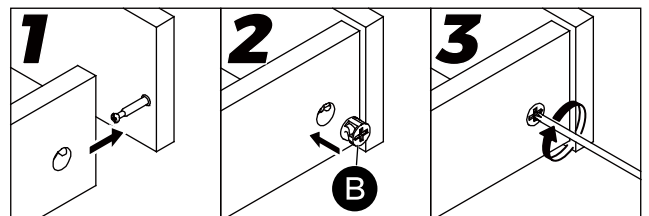


14

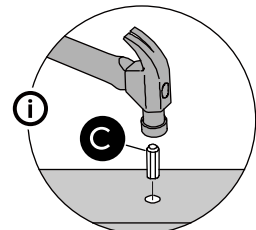
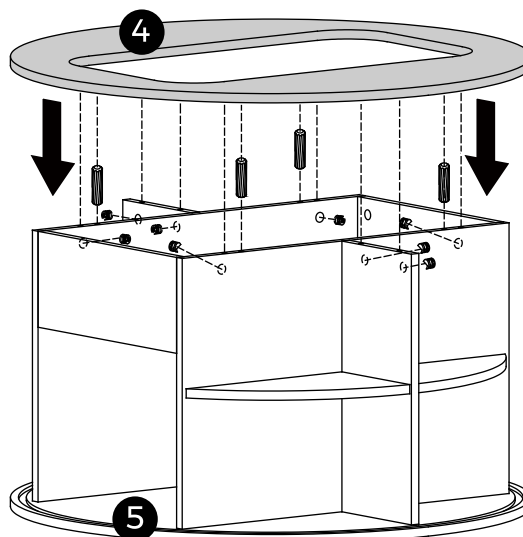
B x 8pcs



C x 4pcs



The grain direction of board (4) must correspond to that of boards (5) during installation.

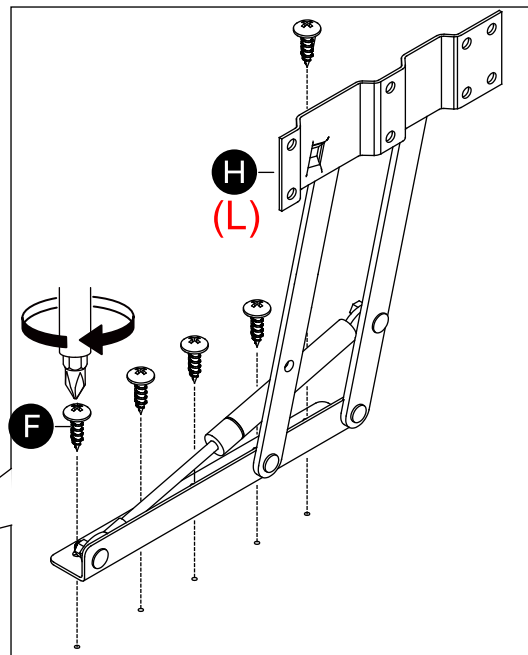
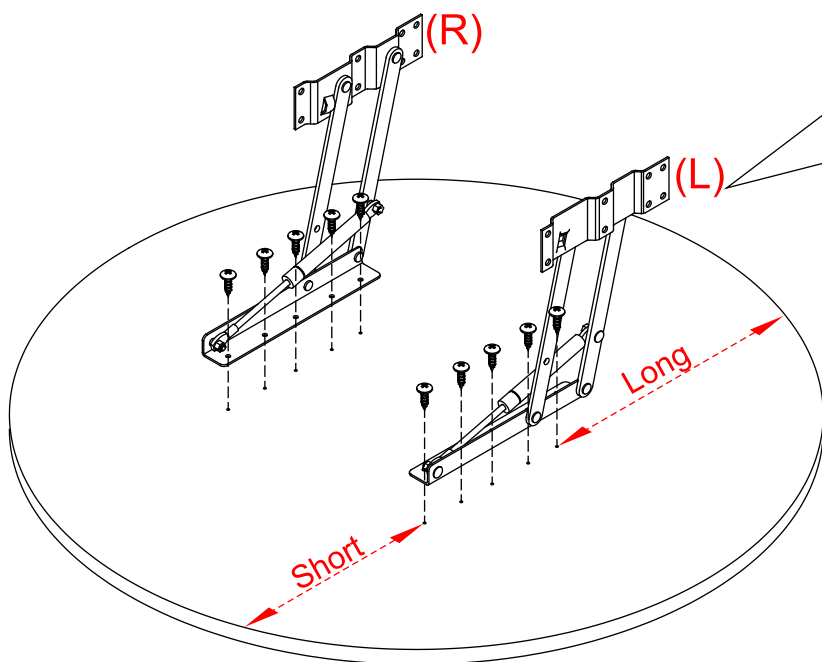
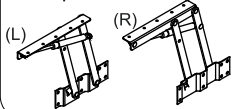


15

F x 10pcs



H x 1pc



English

Install the lifting device as shown, ensuring correct left/right orientation and precise front/rear clearance.

Deutsch

Montieren Sie das Hubgerät gemäß Abbildung, achten Sie auf korrekte Links/Rechts-Ausrichtung und exakten vorderen/hinteren Abstand.

Español

Instale el dispositivo de elevación según se muestra, verificando la orientación izquierda/derecha y manteniendo la distancia frontal/posterior precisa.

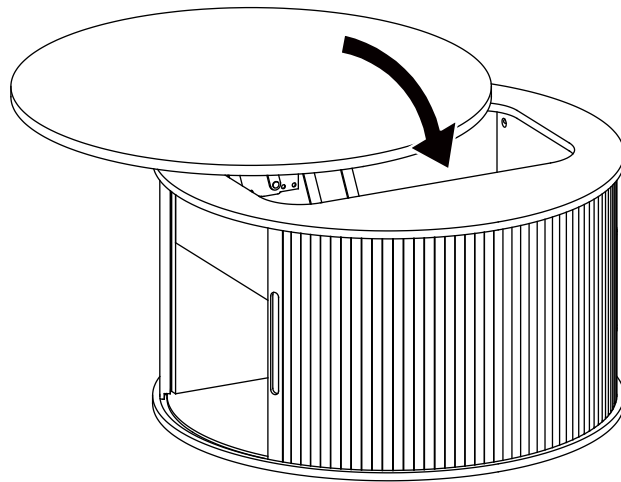
Français

Installez l'élévateur selon le schéma en contrôlant l'orientation gauche/droite et la distance avant/arrière précise.

Italiano

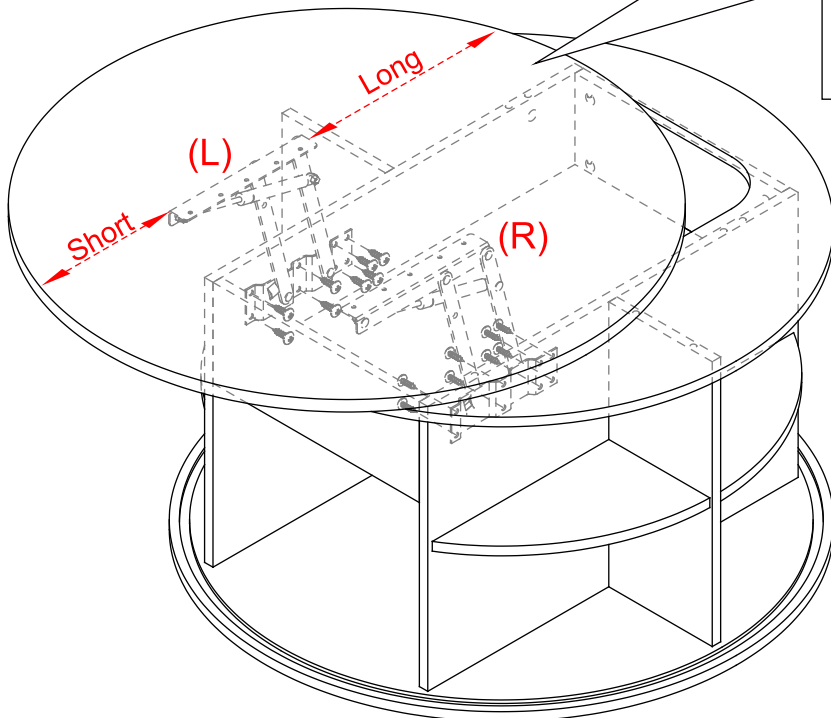
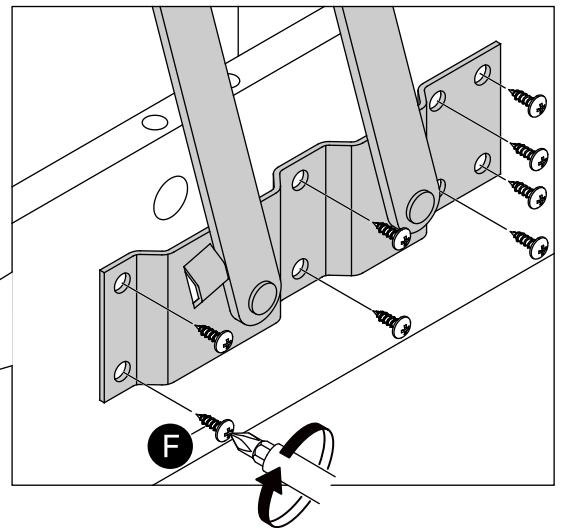
Installare il dispositivo di sollevamento come illustrato, rispettando l'orientamento sinistra/destra e garantendo la distanza anteriore/posteriore precisa.

i

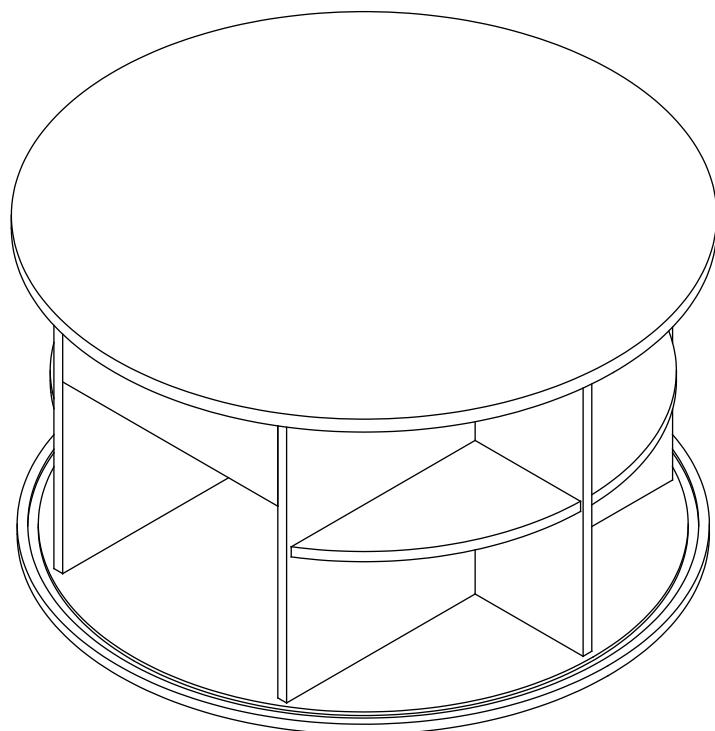


16

F x 16pcs

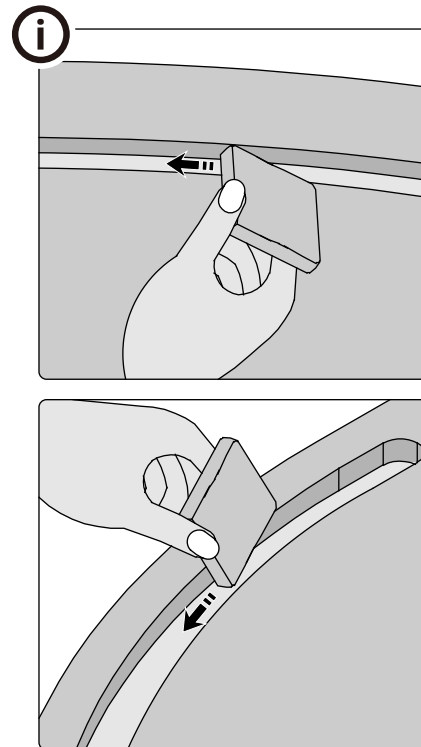
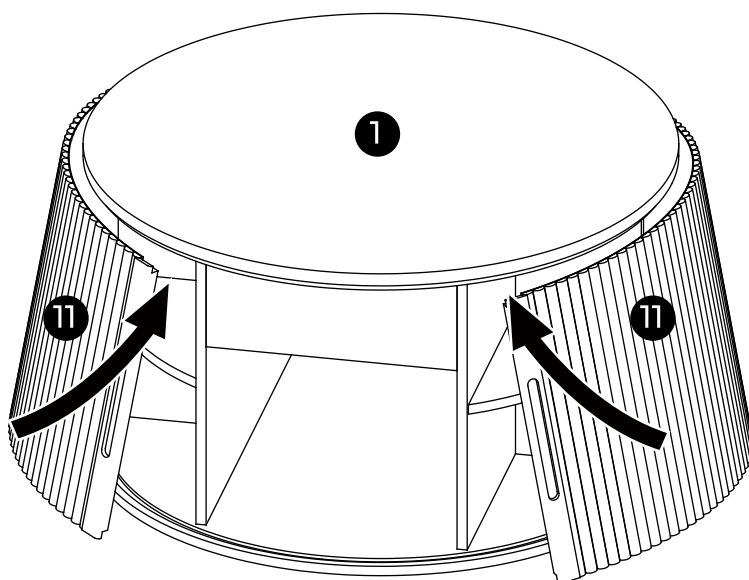
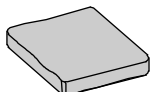


i



17

G x 1pc



English

Clean and lubricate top and bottom track grooves. Tilt shutter, insert top into upper groove first, then bottom into lower groove. Test by sliding. Repeat for second shutter.

Deutsch

Reinigen und fetten Sie die oberen und unteren Führungsschienen. Schiebeanlage neigen, zuerst die Oberseite in die obere Schiene einführen, dann die Unterseite in die untere Schiene. Durch Hin- und Herschieben testen. Für den zweiten Shutter wiederholen.

Español

Limpia y lubrica las ranuras de las guías superiores e inferiores. Inclina la persiana, inserta la parte superior en la ranura de arriba primero, y luego la inferior en la ranura de abajo. Prueba deslizándola. Repite para la segunda persiana.

Français

Nettoyer et lubrifier les rainures de guidage supérieures et inférieures. Incliner le volet, insérer d'abord le haut dans la rainure supérieure, puis le bas dans la rainure inférieure. Tester en le faisant coulisser. Répéter pour le second volet.

Italiano

Pulire e lubrificare le guide superiore e inferiore. Inclinare la serranda, inserire prima la parte superiore nella guida di sopra, poi quella inferiore in quella di sotto. Testare facendola scorrere. Ripetere per la seconda serranda.

i

