





ASSEMBLY INSTRUCTION

Important note :

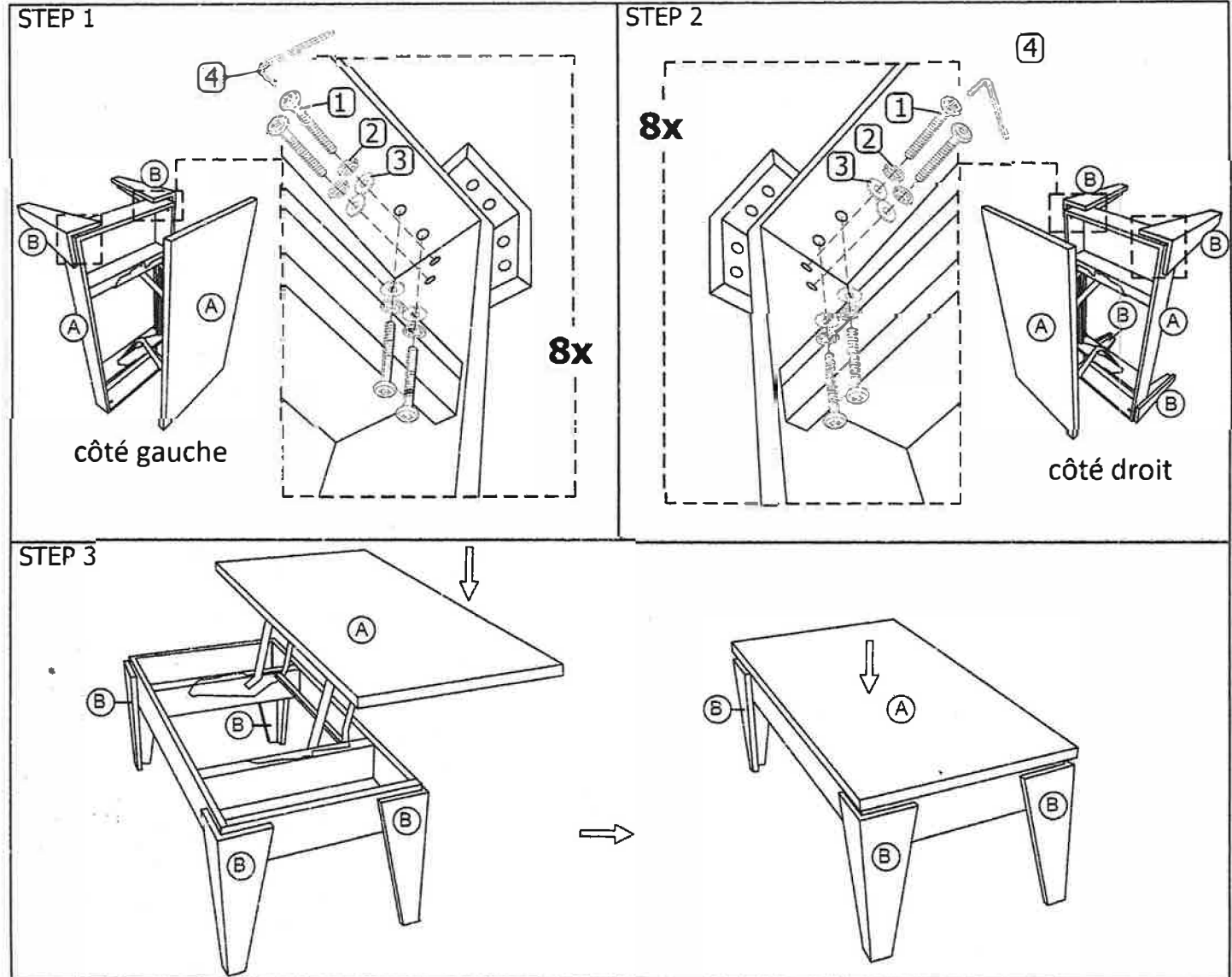
- Placez toutes les pieces en bois sur une surface propre et lisse, comme un tapis pour éviter les rayures
- Suivez les instructions d'assemblage étape par étape
- Ne pas serrer toutes les vis jusqu'à ce que la table est entièrement mis en place

PARTS LIST		
NO	DESCRIPTION	QTY
A	Dessus de la table	1
B	Pied de table	4

HARDWARE LIST		
NO	DESCRIPTION	QTY
1	JCBC SCREW M6 x 35mm 	16 PCS
2	Rondelle élastique 	16 PCS
3	Rondelle plate 	16 PCS
4	Cle Allen 	1 PC



COMPLETED ASSEMBLE



ASSEMBLY INSTRUCTION

Important note :

- Place all wooden part on a clean and smooth surface such as rug or carpet to avoid the part from being scratch
- Please follow the assembly instruction step by step
- Do not tighten all screw until the table fully set-up

PARTS LIST		
NO	DESCRIPTION	QTY
A	TABLE TOP	1
B	TABLE LEG	4

HARDWARE LIST		
NO	DESCRIPTION	QTY
1	JCBC SCREW M6 x 35mm 	16 PCS
2	SPRING WASHER 	16 PCS
3	FLAT WASHER 	16 PCS
4	ALLEN KEY 	1 PC



COMPLETED ASSEMBLE

