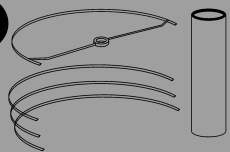
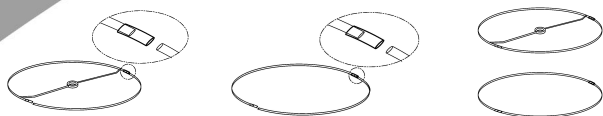


## STEPS TO ASSEMBLE THE LAMPSHADE

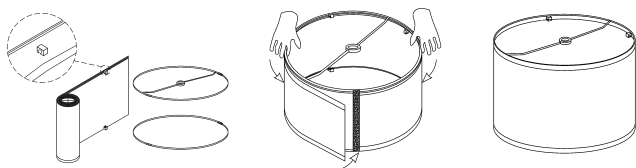
- 1** Take out the lampshades and half-round iron frames.



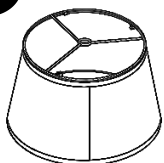
- 2** Join the shorter half-round frame to another half-round frame which have center ring, then join the longer half-round frame to another half-round frame.



- 3** Align the frame with the edge of the lampshades and secure it in place using fasteners. Repeat the process for the second frame. Ensure that the frames are firmly attached and the lampshades are tightly stretched.



- 4** For an oblique barrel-shaped lampshade, align the lamp frame by placing its short edge on the corresponding short side of the lampshade and the long edge on the corresponding long side.

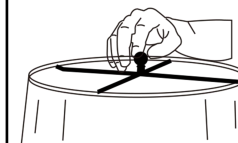


## F184 INSTRUCTION MANUAL

- 5** Install the harps onto the lamp base by positioning them over the sockets. Next, insert the bulb into the socket and rotate it clockwise until it is securely in place. (bulbs are not included).



- 6** Once the lampshade is positioned correctly, screw the finial into place to hold it securely. (If the lamp shade is slanted, adjust the base of the finial to make it level).



# 4MODERN HOME

Dear Customer:

Thank you for choosing 4modernhome! We appreciate your business. Should you have **any questions** or encounter **any issues**, please don't hesitate to contact us. You can reach us via email at **support@4modernhome.com** or by **calling 469-312-6428**. Our team is dedicated to ensuring your complete **satisfaction** with your purchase. We value your feedback, as it helps future customers in making informed decisions. We encourage you to share your experience by leaving a brief product review on the platform where you made the purchase. Additionally, you can scan the **provided code for an installation video** to assist you further. Once again, thank you for choosing 4modernhome!

Best regards,

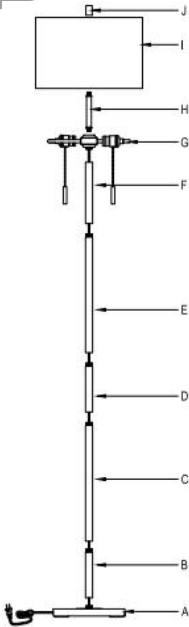
[4Modernhome/Support Team]

Warning: If any special control devices are used with this fixture, follow the instructions carefully to assure full compliance with N.E.C. requirements. If there are any questions, contact a qualified electric contractor.

Warning: California Residents Proposition 65  
This product contains lead, a chemical known to the state of California to cause cancer and birth defects or other reproductive harm. Do not place the product in your mouth. Wash your hands after handling this product.

Caution: It is highly recommended to get an electrician to install this light. Please make sure to turn the electricity off at the main circuit breaker before beginning installation. All glass is fragile. Use care when handling glass component(s) and/or lamp(s).

Applicable bulb type:  
A19,A60,T45,ST58...(Excluding bulb)



1. Unpack all parts from cartons carefully.
2. Carefully pull-out excess power cord from the lamp base while assembling to prevent the cord from becoming twisted.
3. Tighten the tube(B) into the base(A) until tight.
4. Tighten the tube(C) into the tube(B) until tight.
5. Tighten the tube(D) into the tube(C) until tight.
6. Tighten the tube(E) into the tube(D) until tight.
7. Tighten the tube(F) into the tube(E) until tight.
8. Tighten the Saddle(G) into the tube(F) until tight.
9. Tighten the tube(H) into the Saddle(G) until tight.
10. Place the shade(I) onto the Tube(H).
11. Tighten the finial(J) into the Tube(H).

## CAUTION : Risk of fire



Please read all instruction carefully. Before you proceed to install, make sure that the power supply is turned off and remains off until installation is completed.

## PARTS INCLUDED

Code	Part Description	QTY
A	Base	1
B	Tube	1
C	Tube	1
D	Tube	1
E	Tube	1
F	Tube	1
G	Shade	1
H	Tube	1
I	Shade	1
J	Finial	1