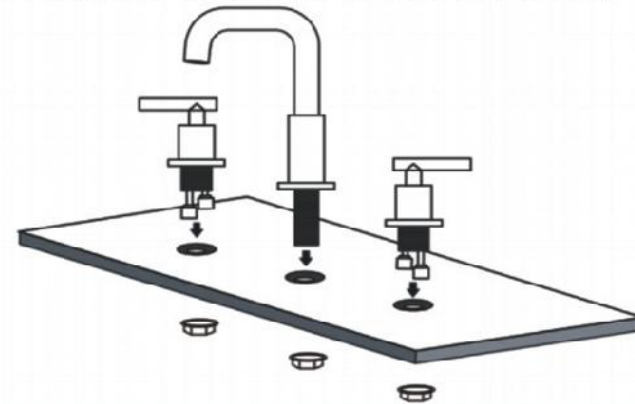
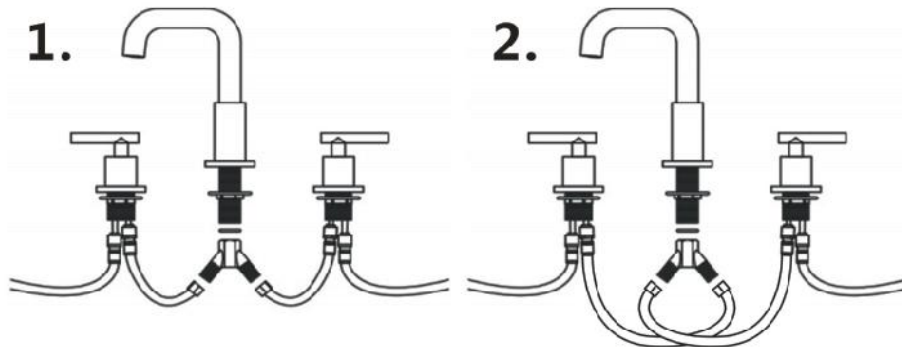


- ① Handle ③ Handle ⑤ Seal ring ⑦ Short Hose
 ② Body ④ Screw Nut ⑥ Y-connection ⑧ Longer Hose



1. Before Installation , ensure there are three holes in the basin , the distance is between 8-16inch widespread .
2. Directly put the body and two handles in to the basin , and adjust the place ,then put the nut to fix it ,at last tight the nut with the wrench .
3. Connect the Y-Shape triple to the body , and must make sure the seal ring has put in it .



4. Separately connect two short hose to Y-Shape connection and the handle
 5. Separately connect two long hose to your valve under the sink
 6. Now the faucet is ready for use
- Tips: please according to the distance between your sink hole to choose the different installation . If your sink hole is too far, you can choose the installation 1 , if your sink hole distance is too close, please choose installation 2

Dear Friend

Thanks for purchasing product in our shop . any question can contact us including receive defective faucet , dont konw how to install , adjust the handle , or want to get longer hose , please, conatct us via amazon email .

We promise to solve your problem and make you 100% satisfied

Have a nice day

Best Regards

VIP After Sales Team