

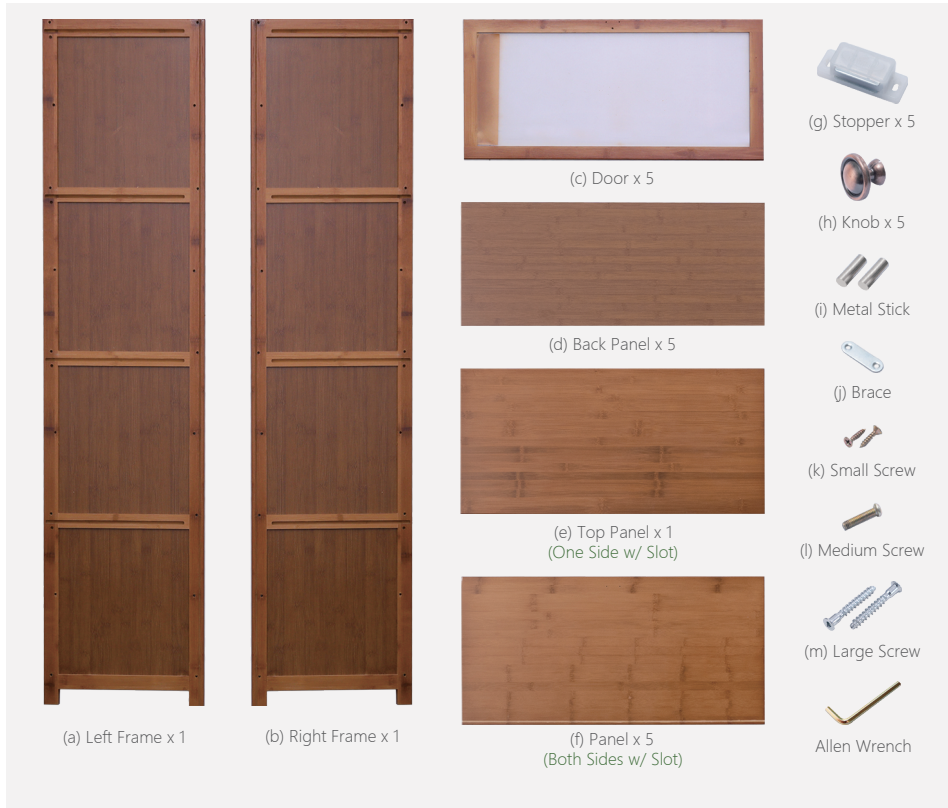
USER GUIDE

BOOKSHELF

Natural / Stylish / Unique



HARDWARE



⚠ ATTENTION

- ① Please always read and follow the assembly, maintenance and operating instruction.
- ② Do not discard any of the packaging until you have checked that you have all the parts and pack of fittings.
- ③ Keep children away during assembly. This item contains small parts which can be swallowed by children.
- ④ Wipe frames with water gently, do not use bleach, acid, or other solvents.
- ⑤ Check all hardwares before assembly. Incorrect parts used may lead to damage.



Scan the QR code to view the assembly video.

ASSEMBLY INSTRUCTIONS

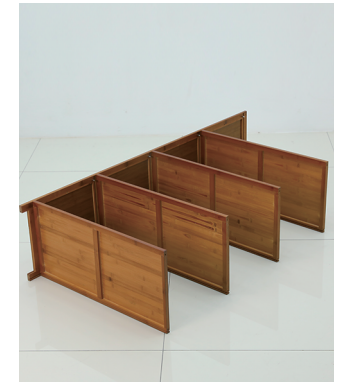
The assembly instructions may vary depending on the number of tiers.



- ① Insert Metal Stick (i) in the pre-drilled hole on Frames (a)(b).



- ② Position Panel (f) and Stopper (g) as picture shown. Secure with Small Screws (k).



- ③ Secure Frame (a) and Panels (f) with Large Screws (m) as picture shown.



- ④ Secure Top Panel (e) with Large Screws (m).



- ⑤ Insert Back Panels (d) to slot as picture shown.

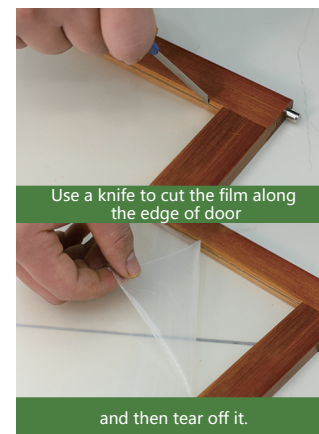


- ⑥ Position and secure Frame (b) with Large Screws (m)

© 2020-2023 by Pundarika LLC - MoNiBloom.com



- ⑦ Install Doors (c), Braces (j), Knobs (h) and Metal Sticks (i) as picture shown.



- ⑧ Install doors to the rack as picture shown.