

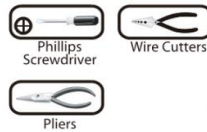
LED Multi-Color Remote Platter Light



INSTRUCTIONS PERTAINING TO RISK OF FIRE OR INJURY TO PERSONS
READ ALL INSTRUCTIONS

**IMPORTANT SAFETY
INSTRUCTIONS**
SAVE THESE INSTRUCTIONS

TOOLS AND MATERIALS REQUIRED:



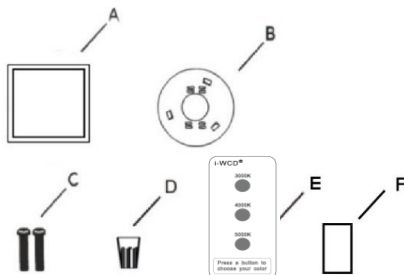
When wiring, should consult a licensed electrician to meet National Electrical Code or local Electrical code.

SAFETY PRECAUTIONS:

1. TURN OFF ELECTRICAL POWER BEFORE STARTING INSTALLATION OF LIGHT FIXTURE.
2. THIS PRODUCT MUST BE INSTALLED IN ACCORDANCE WITH THE APPLICABLE INSTALLATION CODE BY CERTIFIED ELECTRICIAN FAMILIAR WITH LOCAL MUNICIPAL CODES AND REQUIREMENTS.
3. CAUTION-RISK OF ELECTRIC SHOCK. CONSULT A QUALIFIED ELECTRICIAN TO ENSURE CORRECT BRANCH CIRCUIT CONDUCTOR.

PACKAGE CONTENTS

PART	DESCRIPTION	QTY
A	LED light	1
B	Mounting plate	1
C	Mounting screws	2
D	Wire nut	3
E	Remote control	1
F	Velcro	1



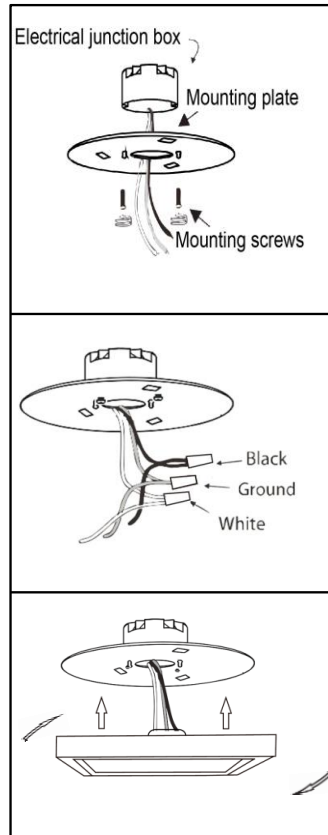
FLUSH MOUNT

Push a button of the remote control to choose 3000K/4000K/5000K.

Max # of Lamps per remote control: 15pcs

Max. control distance: 30 feet

The remote control can be attached on any metal surface by its magnet, or can be stuck to any surface by using provided velcro.



1. Prior to installation, install mounting plate into the junction box with mounting screws. Drive screws completely to the end of the junction box.

2. Connect supply wires to wires on fixture with wire nuts. Connect white to white, black to black and copper wire to copper wire as grounding connection.

3. Push the fixture back convex area into the junction box space room, then turn towards the arrow direction until fastened.